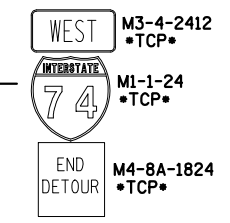
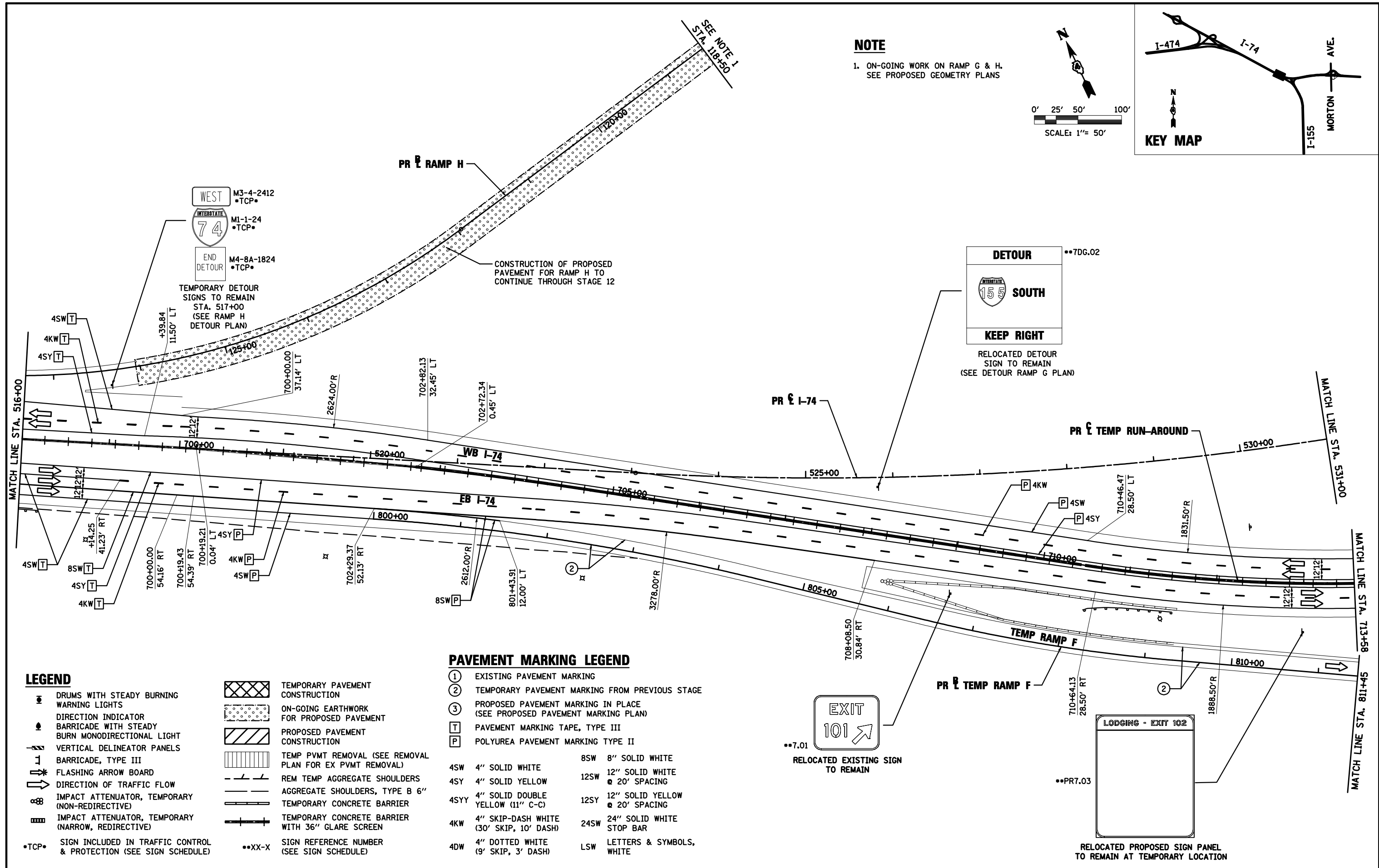
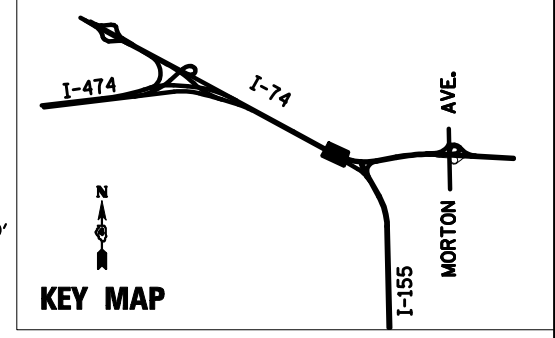
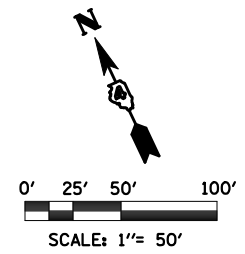


SEE NOTE 1
STA. 18+50

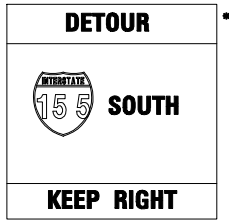
NOTE

1. ON-GOING WORK ON RAMP G & H.
SEE PROPOSED GEOMETRY PLANS



TEMPORARY DETOUR
SIGNS TO REMAIN
STA. 517+00
(SEE RAMP H
DETOUR PLAN)

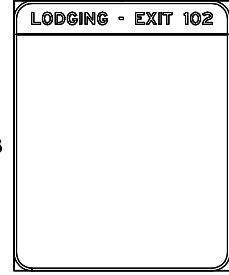
CONSTRUCTION OF PROPOSED
PAVEMENT FOR RAMP H TO
CONTINUE THROUGH STAGE 12



RELOCATED DETOUR
SIGN TO REMAIN
(SEE DETOUR RAMP G PLAN)



RELOCATED EXISTING SIGN
TO REMAIN



RELOCATED PROPOSED SIGN PANEL
TO REMAIN AT TEMPORARY LOCATION

LEGEND

- DRUMS WITH STEADY BURNING WARNING LIGHTS
- DIRECTION INDICATOR BARRICADE WITH STEADY BURN MONODIRECTIONAL LIGHT
- VERTICAL DELINEATOR PANELS
- BARRICADE, TYPE III
- FLASHING ARROW BOARD
- DIRECTION OF TRAFFIC FLOW
- IMPACT ATTENUATOR, TEMPORARY (NON-REDIRECTIVE)
- IMPACT ATTENUATOR, TEMPORARY (NARROW, REDIRECTIVE)
- TCP• SIGN INCLUDED IN TRAFFIC CONTROL & PROTECTION (SEE SIGN SCHEDULE)

- TEMPORARY PAVEMENT CONSTRUCTION
- ON-GOING EARTHWORK FOR PROPOSED PAVEMENT
- PROPOSED PAVEMENT CONSTRUCTION
- TEMP PVMT REMOVAL (SEE REMOVAL PLAN FOR EX PVMT REMOVAL)
- REM TEMP AGGREGATE SHOULDERS
- AGGREGATE SHOULDERS, TYPE B 6"
- TEMPORARY CONCRETE BARRIER
- TEMPORARY CONCRETE BARRIER WITH 36" GLARE SCREEN
- SIGN REFERENCE NUMBER (SEE SIGN SCHEDULE)

PAVEMENT MARKING LEGEND

- ① EXISTING PAVEMENT MARKING
 - ② TEMPORARY PAVEMENT MARKING FROM PREVIOUS STAGE
 - ③ PROPOSED PAVEMENT MARKING IN PLACE (SEE PROPOSED PAVEMENT MARKING PLAN)
 - T PAVEMENT MARKING TAPE, TYPE III
 - P POLYUREA PAVEMENT MARKING TYPE II
- | | |
|---------------------------------------------|-------------------------------------|
| 4SW 4" SOLID WHITE | 8SW 8" SOLID WHITE |
| 4SY 4" SOLID YELLOW | 12SW 12" SOLID WHITE @ 20" SPACING |
| 4SYY 4" SOLID DOUBLE YELLOW (11" C-C) | 12SY 12" SOLID YELLOW @ 20" SPACING |
| 4KW 4" SKIP-DASH WHITE (30' SKIP, 10' DASH) | 24SW 24" SOLID WHITE STOP BAR |
| 4DW 4" DOTTED WHITE (9' SKIP, 3' DASH) | LSW LETTERS & SYMBOLS, WHITE |

FILE NAME = D468620-sh1-staging07_174-08.dgn	DESIGNED - HTL	REVISED -
USER NAME = TERRA	DRAWN - JPS	REVISED -
PLOT DATE = 7/17/2012	CHECKED - DA/LVA	REVISED -
	DATE - 7/20/2012	REVISED -



STATE OF ILLINOIS
DEPARTMENT OF TRANSPORTATION

MAINTENANCE OF TRAFFIC STAGE 8	
SCALE:	SHEET NO. 7 OF 13 SHEETS STA. 516+00 TO STA. 531+00

F.A.I. RTE.:	SECTION	COUNTY	TOTAL SHEETS	SHEET NO.
•	90-[14R(14HB-4,14,14HVB)BR]	TAZEWELL	2433	931
CONTRACT NO. 68620			ILLINOIS FED. AID PROJECT	