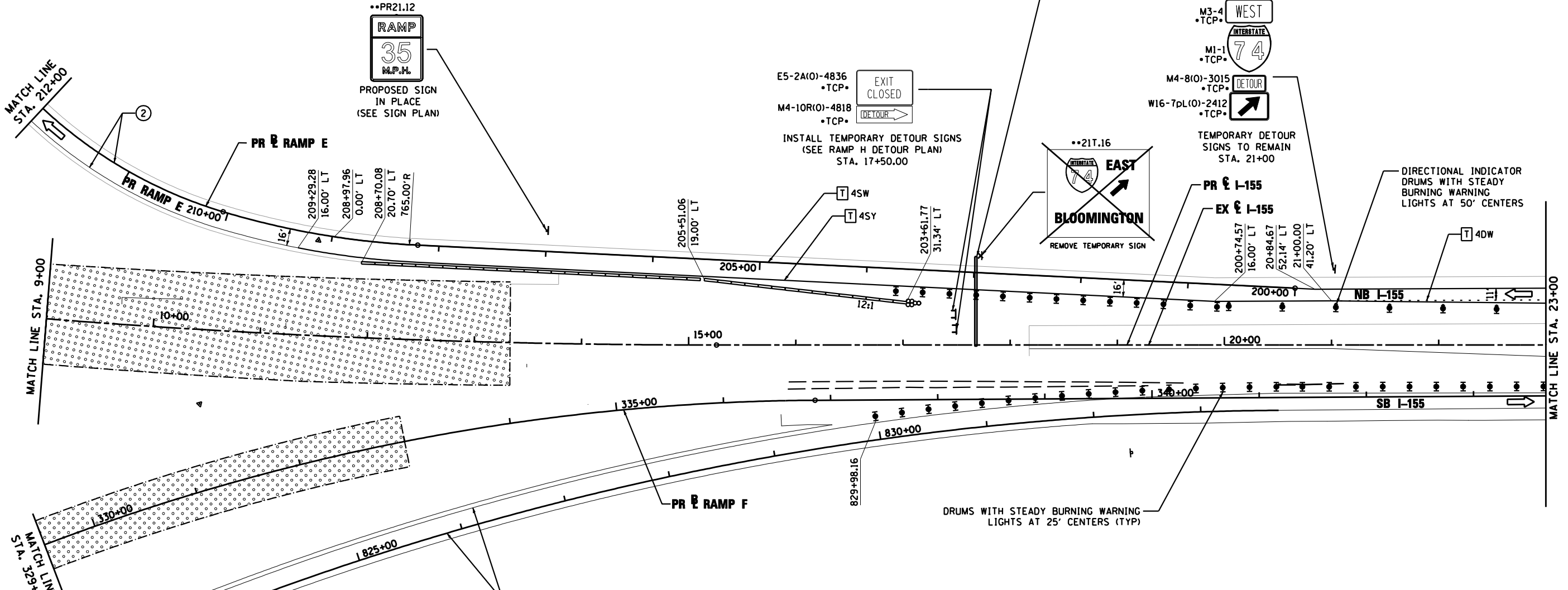
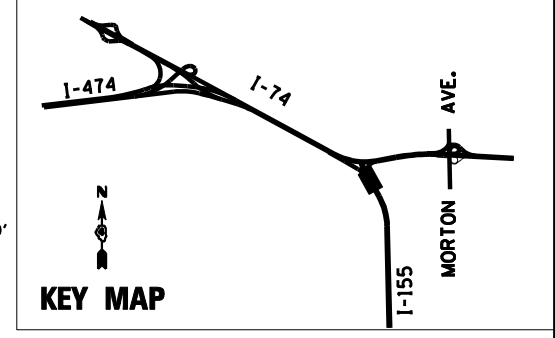
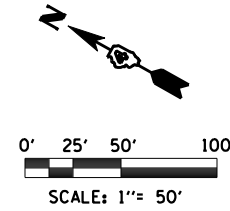


INSTALL PROPOSED OVERHEAD SIGN STRUCTURE AND SIGN PANELS (SEE STRUCTURAL AND SIGN PLAN) STA. 17+68.00



PAVEMENT MARKING LEGEND

- ① EXISTING PAVEMENT MARKING
 - ② TEMPORARY PAVEMENT MARKING FROM PREVIOUS STAGE
 - ③ PROPOSED PAVEMENT MARKING IN PLACE (SEE PROPOSED PAVEMENT MARKING PLAN)
 - T PAVEMENT MARKING TAPE, TYPE III
 - P POLYUREA PAVEMENT MARKING TYPE II
- | | | | |
|------|---|------|--------------------------------|
| 4SW | 4" SOLID WHITE | 8SW | 8" SOLID WHITE |
| 4SY | 4" SOLID YELLOW | 12SW | 12" SOLID WHITE @ 20' SPACING |
| 4SYY | 4" SOLID DOUBLE YELLOW (11" C-C) | 12SY | 12" SOLID YELLOW @ 20' SPACING |
| 4KW | 4" SKIP-DASH WHITE (30' SKIP, 10' DASH) | 24SW | 24" SOLID WHITE STOP BAR |
| 4DW | 4" DOTTED WHITE (9' SKIP, 3' DASH) | LSW | LETTERS & SYMBOLS, WHITE |

LEGEND

- ☉ DRUMS WITH STEADY BURNING WARNING LIGHTS
- ➡ DIRECTION INDICATOR BARRICADE WITH STEADY BURN MONODIRECTIONAL LIGHT
- ▬ VERTICAL DELINEATOR PANELS
- ⊥ BARRICADE, TYPE III
- ⚡ FLASHING ARROW BOARD
- ➡ DIRECTION OF TRAFFIC FLOW
- ⊘ IMPACT ATTENUATOR, TEMPORARY (NON-REDIRECTIVE)
- ⊘ IMPACT ATTENUATOR, TEMPORARY (NARROW, REDIRECTIVE)
- TCP• SIGN INCLUDED IN TRAFFIC CONTROL & PROTECTION (SEE SIGN SCHEDULE)
- XX-X SIGN REFERENCE NUMBER (SEE SIGN SCHEDULE)
- ▨ TEMPORARY PAVEMENT CONSTRUCTION
- ▤ ON-GOING EARTHWORK FOR PROPOSED PAVEMENT
- ▧ PROPOSED PAVEMENT CONSTRUCTION
- ▩ TEMP PVMT REMOVAL (SEE REMOVAL PLAN FOR EX PVMT REMOVAL)
- ▬ REM TEMP AGGREGATE SHOULDERS
- ▬ AGGREGATE SHOULDERS, TYPE B 6"
- ▬ TEMPORARY CONCRETE BARRIER
- ▬ TEMPORARY CONCRETE BARRIER WITH 36" GLARE SCREEN

FILE NAME =	DESIGNED - HTL	REVISED -
D468620-shr-staging21 1155-09.dgn	DRAWN - JPS	REVISED -
USER NAME = TERRA	CHECKED - DA/LVA	REVISED -
PLOT DATE = 7/16/2012	DATE - 7/20/2012	REVISED -



STATE OF ILLINOIS
DEPARTMENT OF TRANSPORTATION

**MAINTENANCE OF TRAFFIC
STAGE 9**

SCALE: SHEET NO. 12 OF 15 SHEETS STA. 9+00 TO STA. 23+00

F.A.I. RTE.	SECTION	COUNTY	TOTAL SHEETS	SHEET NO.
•	90-[14R;(14HB-4,14,14HB)/BR]	TAZEWELL	2433	961
CONTRACT NO. 68620			ILLINOIS FED. AID PROJECT	