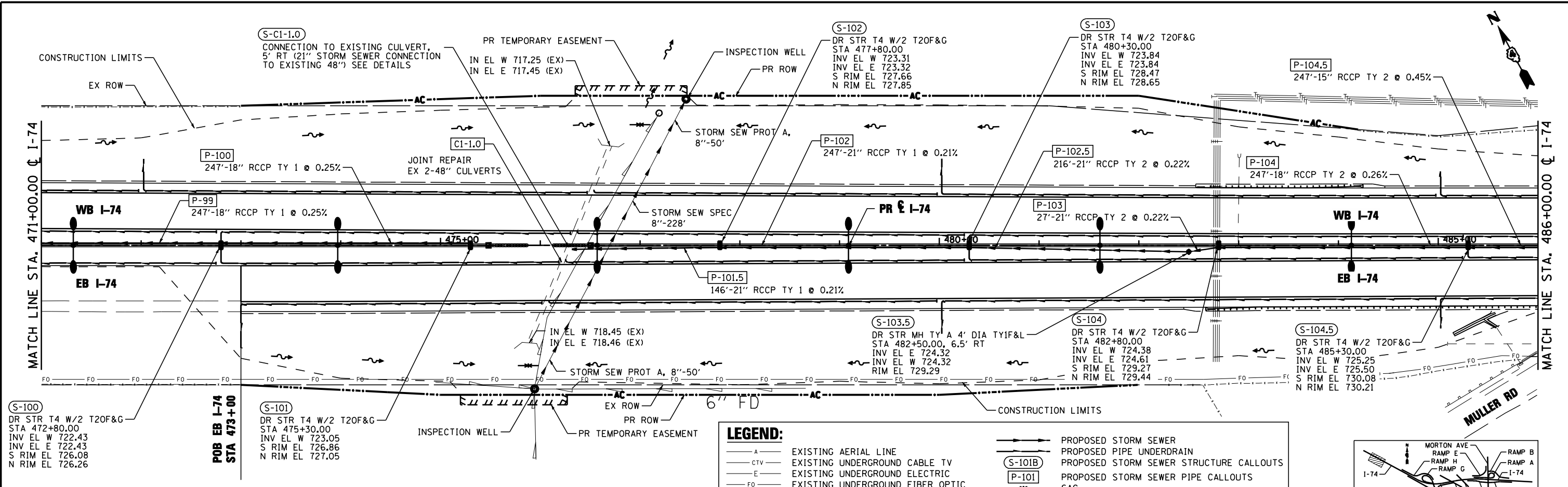


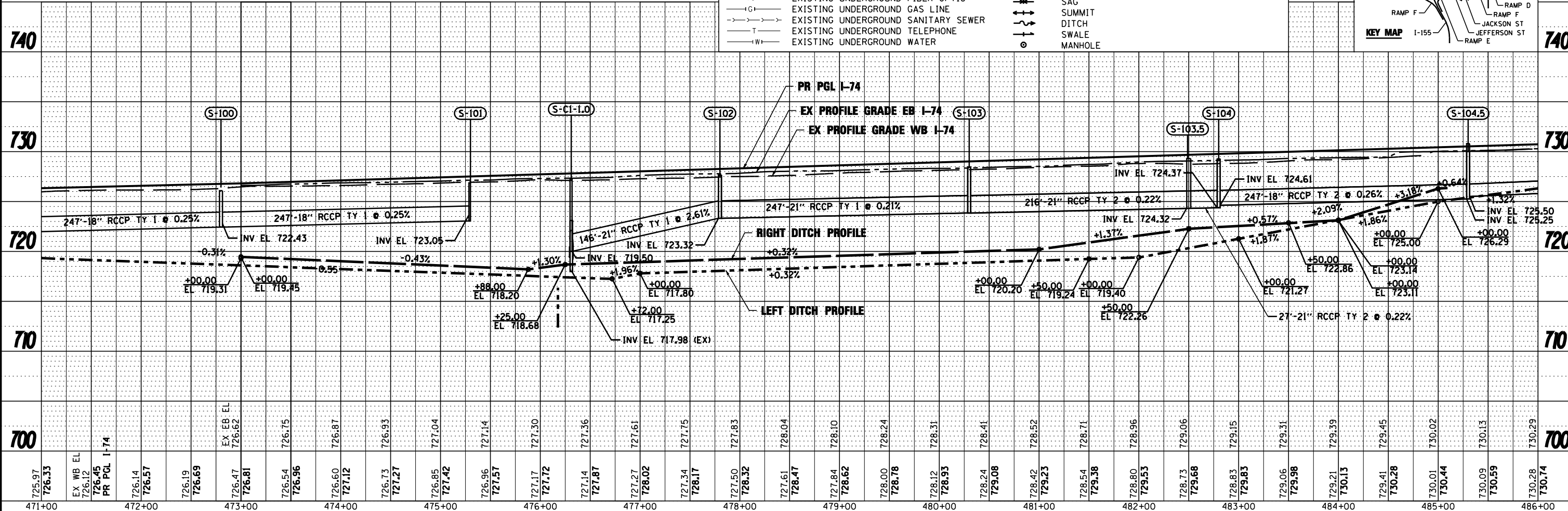
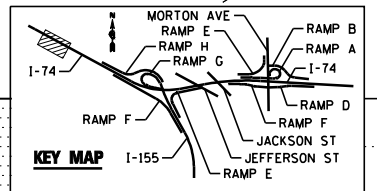
DATE	
BY	
PLAN	SURVEYED
NOTE BOOK	PLOTTED
NO.	GRADES CHECKED
	ALIGNMENT CHECKED
	STRUCTURE CHECKED
	ROAD FILE NAME

DATE	
BY	
PROFILE	SURVEYED
NOTE BOOK	PLOTTED
NO.	GRADES CHECKED
	ALIGNMENT CHECKED
	STRUCTURE CHECKED
	NOTATIS CHFD



LEGEND:

- A — EXISTING AERIAL LINE
- CTV — EXISTING UNDERGROUND CABLE TV
- E — EXISTING UNDERGROUND ELECTRIC
- FO — EXISTING UNDERGROUND FIBER OPTIC
- IG — EXISTING UNDERGROUND GAS LINE
- S — EXISTING UNDERGROUND SANITARY SEWER
- T — EXISTING UNDERGROUND TELEPHONE
- W — EXISTING UNDERGROUND WATER
- P — PROPOSED STORM SEWER
- P — PROPOSED PIPE UNDERDRAIN
- S-101B — PROPOSED STORM SEWER STRUCTURE CALLOUTS
- P-101 — PROPOSED STORM SEWER PIPE CALLOUTS
- SAG — SAG
- SUMMIT — SUMMIT
- DITCH — DITCH
- SWALE — SWALE
- MANHOLE — MANHOLE



FILE NAME =	DESIGNED - EJA	REVISED -		STATE OF ILLINOIS DEPARTMENT OF TRANSPORTATION	DRAINAGE AND UTILITY PLAN AND PROFILE I-74	F.A.I. RTE.	SECTION	COUNTY	TOTAL SHEETS	SHEET NO.
...\\D468620-sht-1-74-drain02.dgn	DRAWN - TMB	REVISED -				90-114R(14HB-4,14,14HVB)BR	TAZEWELL	2433	1415	
USER NAME = toddbenk	CHECKED - JNR	REVISED -				CONTRACT NO. 68620				
DATE = 7/17/2012	DATE - JULY 20, 2012	REVISED -				ILLINOIS FED. AID PROJECT				