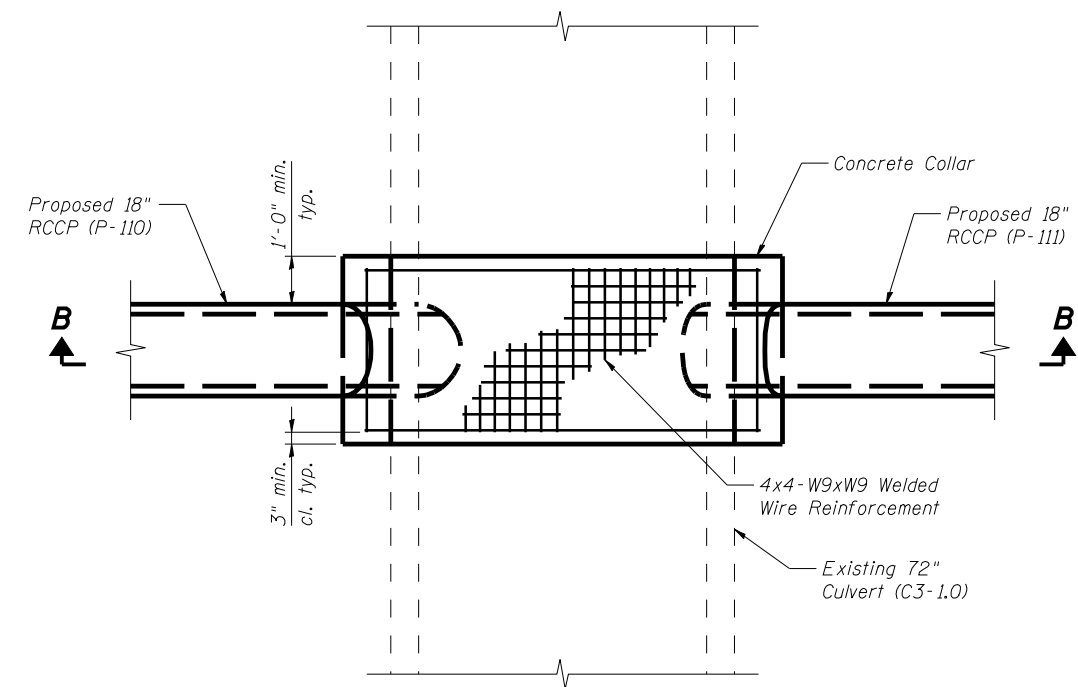
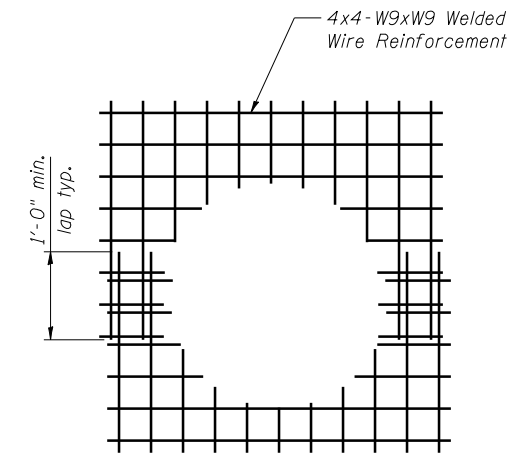


S-CI-1.0 PLAN

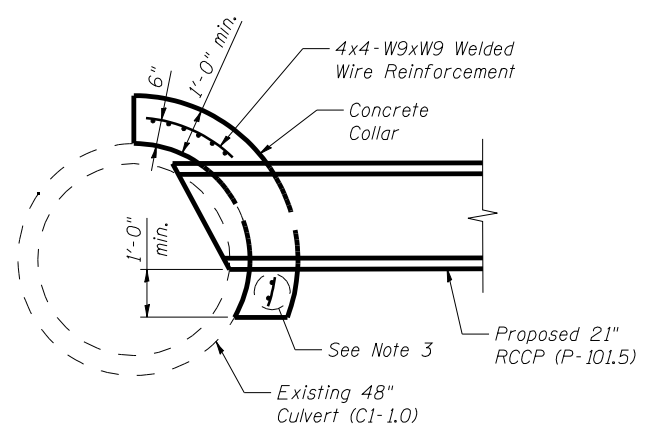


S-C3-1.0 PLAN

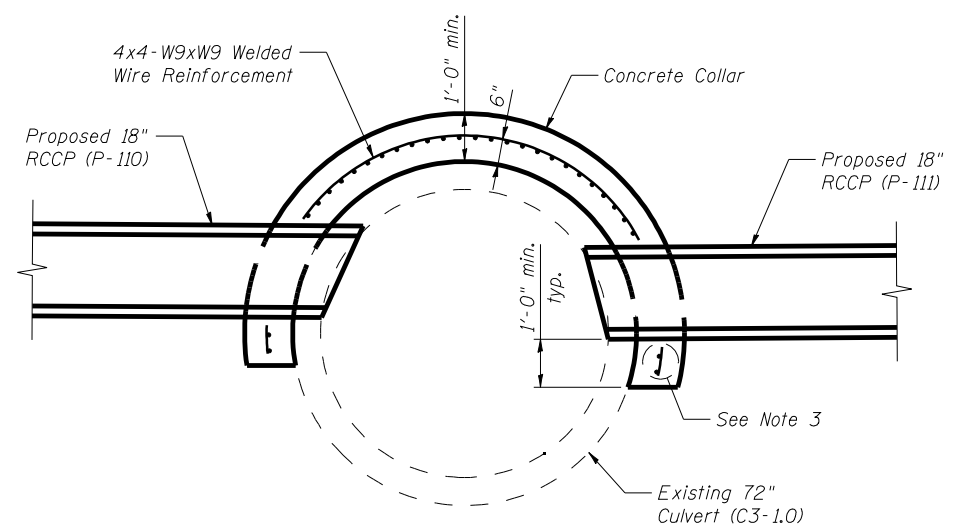


Note: Lap orientation may also be horizontal.

WELDED WIRE CUTOUT DETAIL



SECTION A-A



SECTION B-B

NOTES:

1. Contractor shall verify all field dimensions prior to commencing work.
2. Welded wire reinforcement shall conform to the requirements of AASHTO M55 or AASHTO M221.
3. Reinforcement shall be bent and cut in the field as required to accommodate the existing and proposed pipes. A minimum of two horizontal wires shall pass beneath each proposed pipe.
4. All work and materials shown on this sheet shall be paid for as Connection to Existing Culvert.
5. See Drainage Plans for invert elevations and other geometry.
6. All work shown on this sheet shall be performed in accordance with the Special Provision for Connection to Existing Culvert.

FILE NAME = ...D468620-shr-ConcCollarDtls.dgn	DESIGNED -	REVISD -		STATE OF ILLINOIS DEPARTMENT OF TRANSPORTATION	CONCRETE COLLAR DETAILS			F.A.I. RTE.	SECTION	COUNTY	TOTAL SHEETS	SHEET NO.
USER NAME = toddblank	DRAWN -	REVISD -						90-114R(14HB-4,14,14HB)BR	TAZEWELL	2433	1459	
PLOT DATE = 7/17/2012	CHECKED -	REVISD -			SCALE: NTS	SHEET NO. 3 OF 7 SHEETS	STA.	TO STA.	CONTRACT NO. 68620		ILLINOIS FED. AID PROJECT	
DATE - JULY 20, 2012	REVISD -	REVISD -			• 74 & 155							