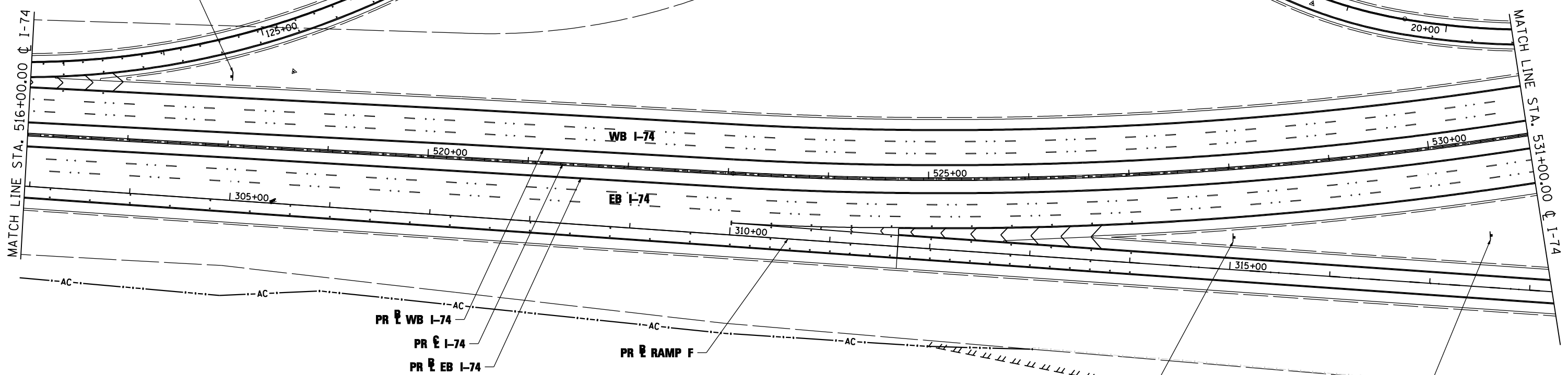


W4-3 (48x48)
STA 518+00, 69' LT

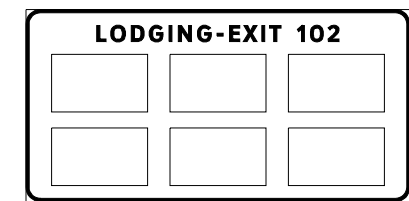


PR RAMP H

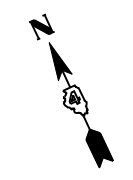
PR RAMP G



E5-1a (96x60)
STA 528+00, 69' RT



STA 530+50, 94.5' RT



FILE NAME =	DESIGNED - LDC	REVISED -
...D468620-sh1-1-74-sign05.dgn	DRAWN - SMS	REVISED -
USER NAME = IDOT	CHECKED - GEB	REVISED -
PLOT DATE = 7/16/2012	DATE - JULY 20, 2012	REVISED -



STATE OF ILLINOIS
DEPARTMENT OF TRANSPORTATION

SIGNING PLAN
I-74

SCALE: 1"=50' SHEET NO. 5 OF 36 SHEETS STA. 516+00.00 TO STA. 531+00.00

F.A.I. RTE.	SECTION	COUNTY	TOTAL SHEETS	SHEET NO.
90-[14R;14HB-4,14,14HVB]BR	TAZEWELL	2433	1552	
CONTRACT NO. 68620				
ILLINOIS FED. AID PROJECT				