

PLAN DETAIL "A"
 ☐ Span between Panel Points

PLAN DETAIL "B"
 ☐ Span at Panel Point

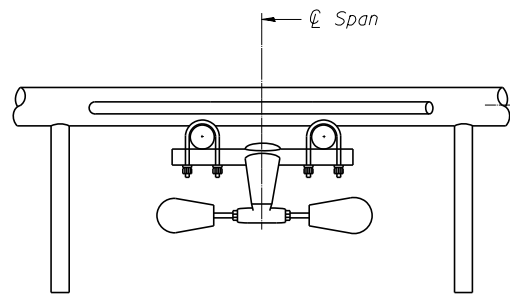
PLAN DETAIL "C"
 ☐ Span at ☐ Chord Splice

* Center of horizontal to center of splice dimension may vary. Verify before drilling holes in mounting tube.

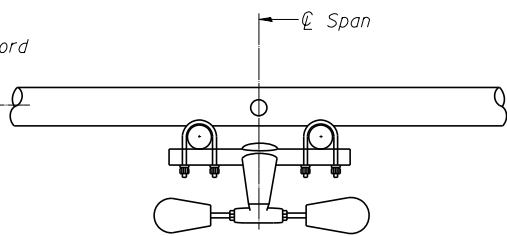
NOTES

Damper: One damper per truss. (31 lbs. minimum Stockbridge-Type Aluminum - 29" minimum between ends of weights) Cost included in Overhead Sign Structure...

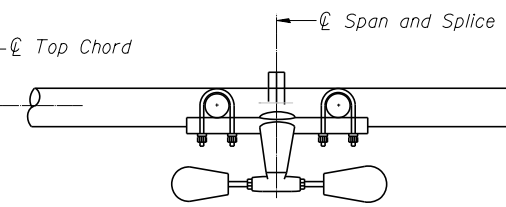
Materials: Materials: Aluminum tubes shall be ASTM B221 alloy 6061 temper T6. Cost included in Overhead Sign Structure...



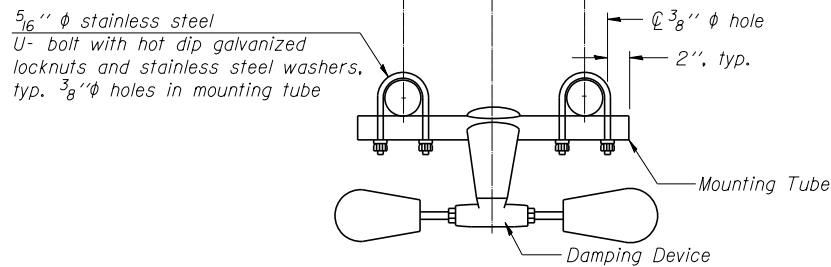
SECTION A-A



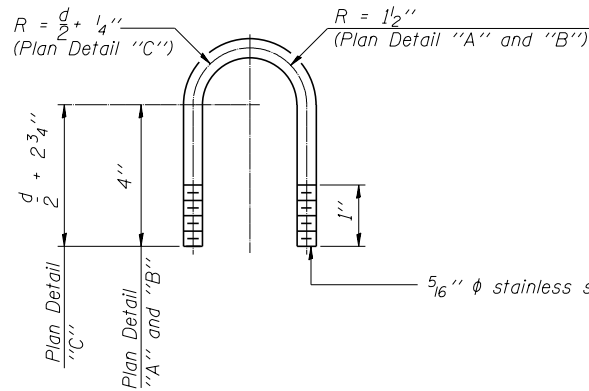
SECTION B-B



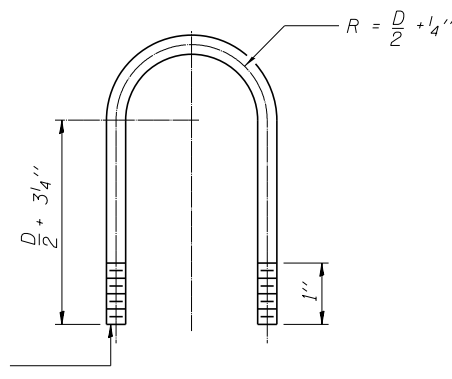
SECTION C-C



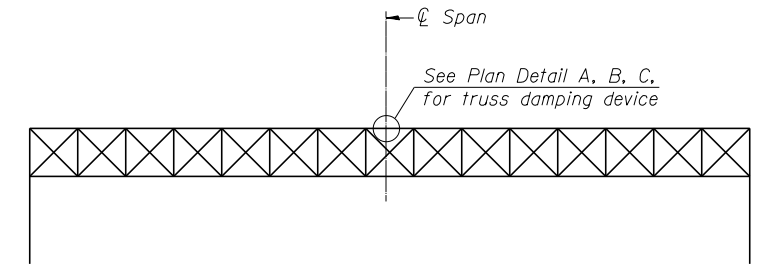
TRUSS DAMPING DEVICE CONNECTION DETAIL
 (Typical)



DAMPING DEVICE MOUNTING TUBE U-BOLT DETAIL
 (Typical)



TOP CHORD TO CROSS TUBE U-BOLT DETAIL
 (Typical - Detail "A" and "B")



ELEVATION
 Aluminum Overhead Sign Truss



Alfred Benesch & Company
 205 North Michigan Avenue, Suite 2400
 Chicago, Illinois 60601
 312-565-0450 Job No. 10056

OS-A-D

6-1-12

FILE NAME =
 xxxxxx_68620_04_dmp1.dgn

USER NAME = mbecker
 PLOT SCALE =
 PLOT DATE = 7/16/2012

DESIGNED - MFB
 CHECKED - KJN
 DRAWN - MFB
 CHECKED - KJN

REVISED -
 REVISED -
 REVISED -
 REVISED -

**STATE OF ILLINOIS
 DEPARTMENT OF TRANSPORTATION**

**OVERHEAD SIGN STRUCTURE
 DAMPING DEVICE**

SHEET NO. SS4 OF SS32 SHEETS

F.A.I. RTE.	SECTION	COUNTY	TOTAL SHEETS	SHEET NO.
74	90-[14R;(14HB-4,14,14HVB)BR]	TAZEWELL	2433	1624
CONTRACT NO. 68620				

ILLINOIS FED. AID PROJECT