

TYPICAL TRUSS UNIT

(Sign and walkway omitted for clarity)

Note:
There are twice as many horizontal diagonals as there are vertical diagonals.

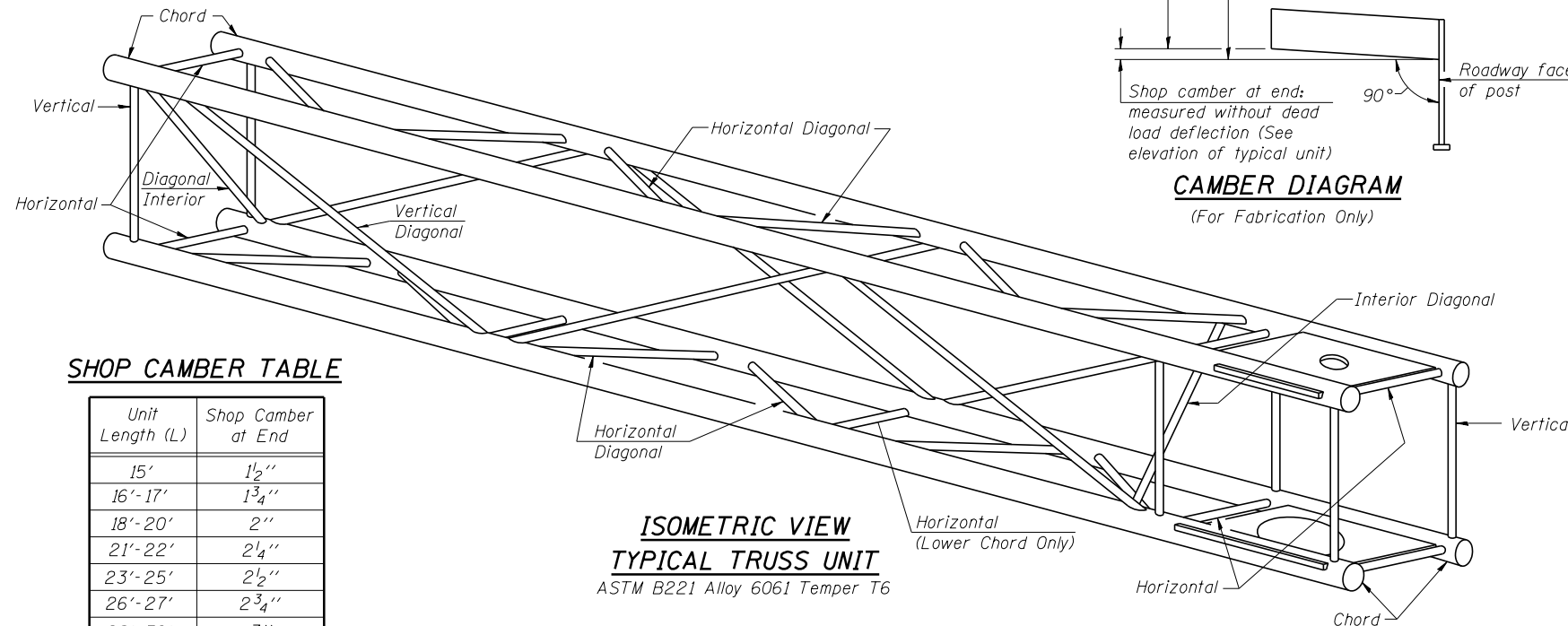
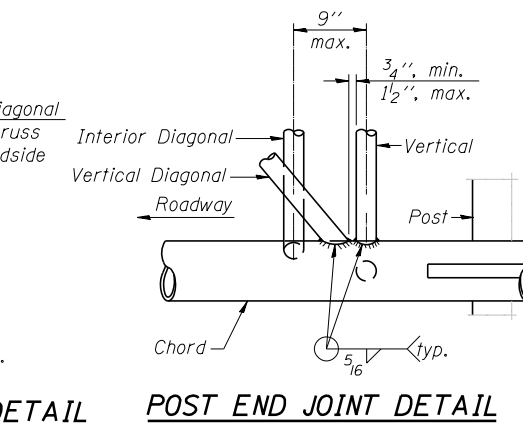
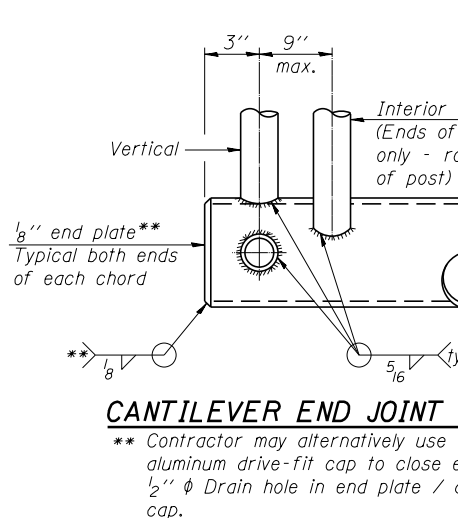
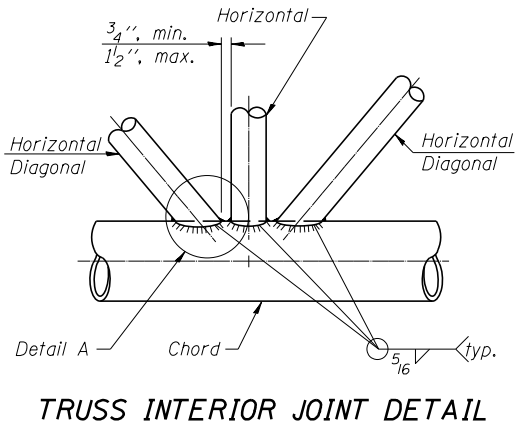
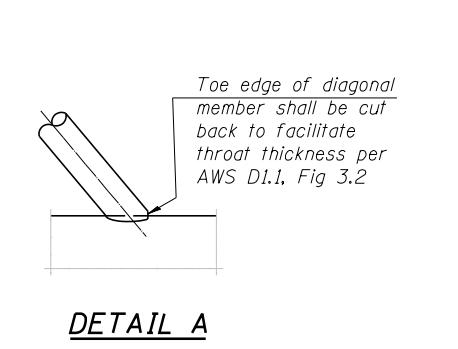
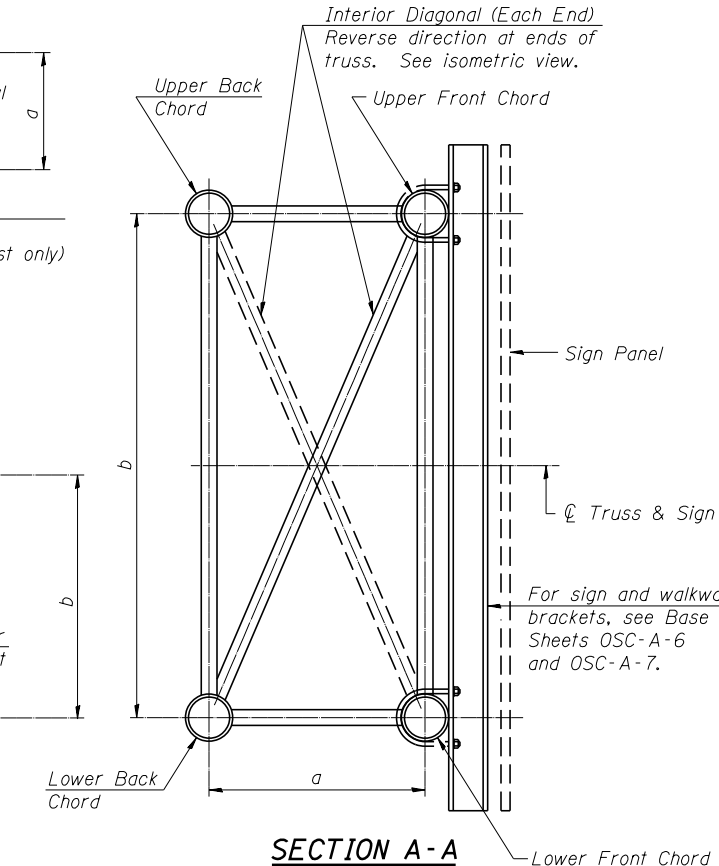
For Section B-B and Section C-C, see Base Sheet OSC-A-3.

TRUSS UNIT TABLE

| Truss Type | Dimension "a" | Dimension "b" | Dimension "s" | Limits for Panel Spacing (P)* | Up. & Low. Chord | | Verticals; Horizontals; Vertical, Horizontal, and Interior Diagonals | |
|-----------------------|---------------|---------------|---------------|-------------------------------|------------------|-------|--|-------|
| | | | | | O.D. | Wall | O.D. | Wall |
| I-C-A | 24" | 54" | 16" | 36" min. to 48" max. | 5" | 5/16" | 2 1/2" | 5/16" |
| II-C-A | 36" | 66" | 21" | 42" min. to 54" max. | 6 1/2" | 5/16" | 3 1/4" | 5/16" |
| III-C-A (35' Max.) | 36" | 84" | 21" | 48" min. to 66" max. | 7" | 3/8" | 3 1/2" | 3/8" |
| III-C-A (>35' to 40') | 36" | 84" | 21" | 48" min. to 66" max. | 8" | 3/8" | 3 1/2" | 3/8" |

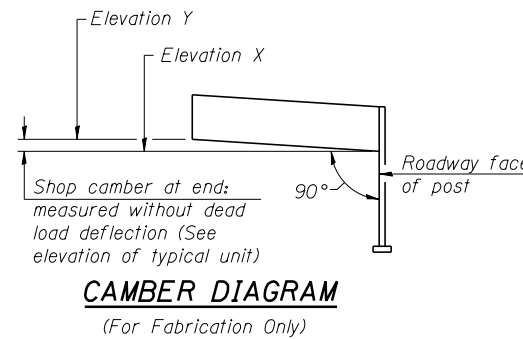
*P = $\frac{L-s-3"}{\# \text{ Panels}}$

| Structure Number | Station | Truss Type | Design Length (L) | Number of Panels Per Unit | Panel Length (P)* |
|------------------|-----------|------------|-------------------|---------------------------|-------------------|
| 4C0901074L101.1 | 541+22.02 | III-C-A | 32 | 6 | 5'-0" |
| 4C090LMORL102.2 | 47+50.00 | I-C-A | 24 | 6 | 3'-8 3/8" |
| | | | | | |
| | | | | | |
| | | | | | |
| | | | | | |
| | | | | | |
| | | | | | |
| | | | | | |
| | | | | | |



SHOP CAMBER TABLE

| Unit Length (L) | Shop Camber at End |
|-----------------|--------------------|
| 15' | 1 1/2" |
| 16'-17' | 1 3/4" |
| 18'-20' | 2" |
| 21'-22' | 2 1/4" |
| 23'-25' | 2 1/2" |
| 26'-27' | 2 3/4" |
| 28'-30' | 3" |
| 31'-32' | 3 1/4" |
| 33'-35' | 3 1/2" |
| 36'-37' | 4" |
| 38'-40' | 4 1/2" |



OSC-A-2 6-1-12

| | | | |
|--------------------------|-----------------------|----------------|-----------|
| FILE NAME = | USER NAME = mbecker | DESIGNED - MFB | REVISED - |
| xxxxxx_68620_22_etc3.dgn | PLOT SCALE = | CHECKED - KJN | REVISED - |
| | PLOT DATE = 7/16/2012 | DRAWN - MFB | REVISED - |
| | | CHECKED - KJN | REVISED - |

STATE OF ILLINOIS
DEPARTMENT OF TRANSPORTATION

CANTILEVER SIGN STRUCTURES - TRUSS DETAILS
ALUMINUM TRUSS & STEEL POST

| | | | | |
|--------------------|-----------------------------|----------|--------------|-----------|
| F.A.I. RTE. | SECTION | COUNTY | TOTAL SHEETS | SHEET NO. |
| 74 | 90-[14R(14HB-4,14,14HVB)]BR | TAZEWELL | 2433 | 1642 |
| CONTRACT NO. 68620 | | | | |

SHEET NO. SS22 OF SS32 SHEETS

ILLINOIS FED. AID PROJECT

x:\10000s\100056\engineer\ing-documents\phase-1\signstructures\final\xxxxxxxx_68620_22_etc3.dgn 7:33:09 AM 7/16/2012