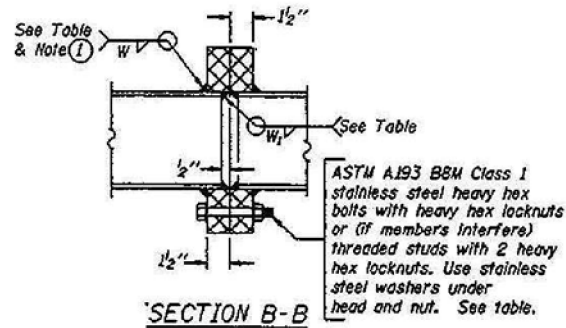


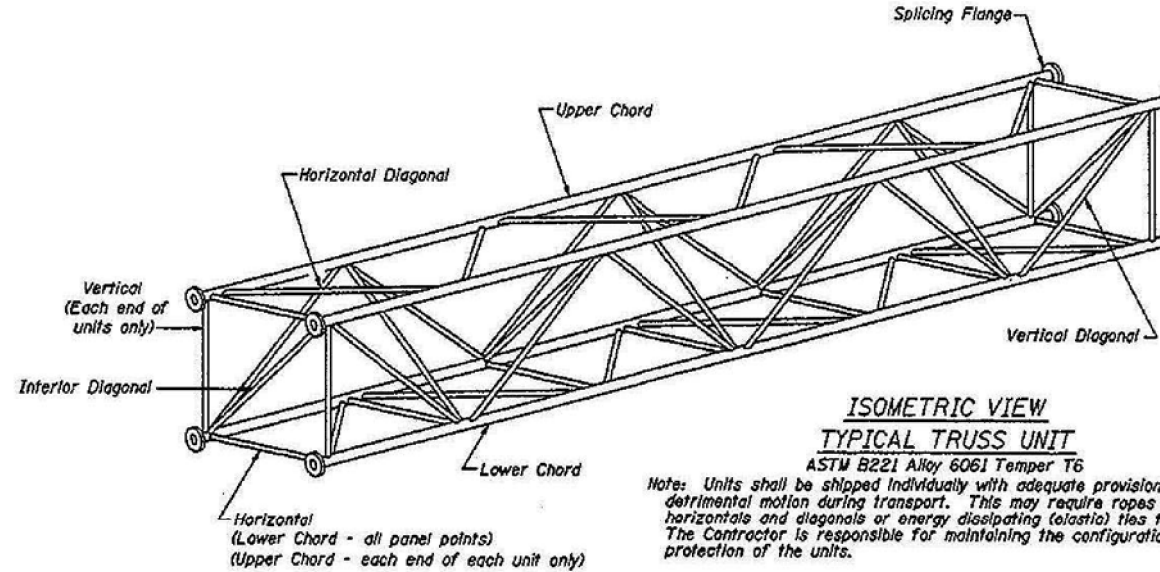
FOR INFORMATION ONLY

TRUSS UNIT TABLE

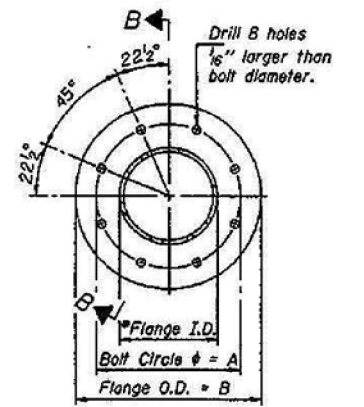
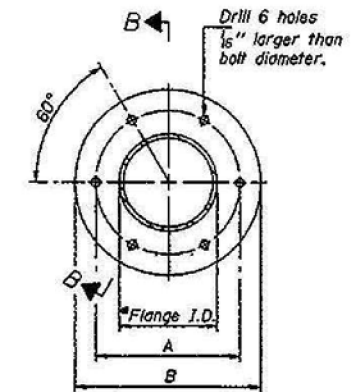
Structure Number	Station	Design Truss Type	Exterior Units (2)			Interior Unit				Upper & Lower Chord		Verticals: Horizontal, and Interior Diagonals		Camber at Midspan	Splicing Flange					
			No. Panels per Unit	Unit Lgth.(L _u)	Panel Lgth.(P)	No. Req'd.	No. Panels per Unit	Unit Lgth.(L _i)	Panel Lgth.(P)	O.D.	Wall	O.D.	Wall		No./Splice	Bolts Dia.	Weld Sizes W ₁ W ₂	A	B	
450901074R10L3	495+00	IIIA	7	37'-9"	5'-1 1/2"	0	0	0	0	7"	1/8"	3 1/2"	3/8"	1/8"	6	1 1/2"	1/8"	5/16"	11 1/2"	15"
450721074L083.5	168+25	IIIA	7	33'-4 1/2"	4'-6"	0	0	0	0	7"	1/8"	3 1/4"	3/8"	1/8"	6	1 1/2"	1/8"	5/16"	11 1/2"	15"



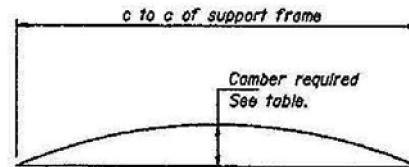
① Splicing Flanges shall be attached to each truss unit with the truss shop assembled to camber shown. Truss units shall be in proper alignment and flange surfaces shall be shop bolted into full contact before welding. Sufficient external welds or tacks shall be made to secure flanges until remaining welds are made after disassembly. Adjacent flanges shall be "match marked" to insure proper field assembly.



Note: Units shall be shipped individually with adequate provision to prevent detrimental motion during transport. This may require ropes between horizontals and diagonals or energy dissipating (elastia) ties to the vehicle. The Contractor is responsible for maintaining the configuration and protection of the units.

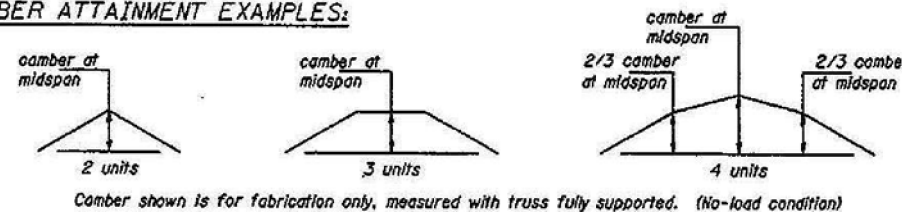


SPLICING FLANGES
ASTM B221 Alloy 6061-T6
or ASTM B209, Alloy 6061-T651
*To fit O.D. of Chord with maximum gap of 1/16".



Camber curve shown is theoretical. Actual camber attained by slope changes at splices between units.

CAMBER ATTAINMENT EXAMPLES:



NUMBER	REVISION	DATE

DESIGNED	TCC
CHECKED	AJN
DRAWN	ABW
CHECKED	TCG

OS4-A-2 7/1/2001

CONTRACT SCI

ITS SHEET 27 OF 98

OVERHEAD SIGN STRUCTURES
ALUMINUM TRUSS DETAILS
FOR TRUSS TYPES I-A, II-A and III-A

ILLINOIS DEPARTMENT OF TRANSPORTATION
F.A.I. 74
D4 I-74 ITS SYSTEM-1
PEORIA & TAZEWELL COUNTIES

10/14/02

EDWARDS AND KELCEY