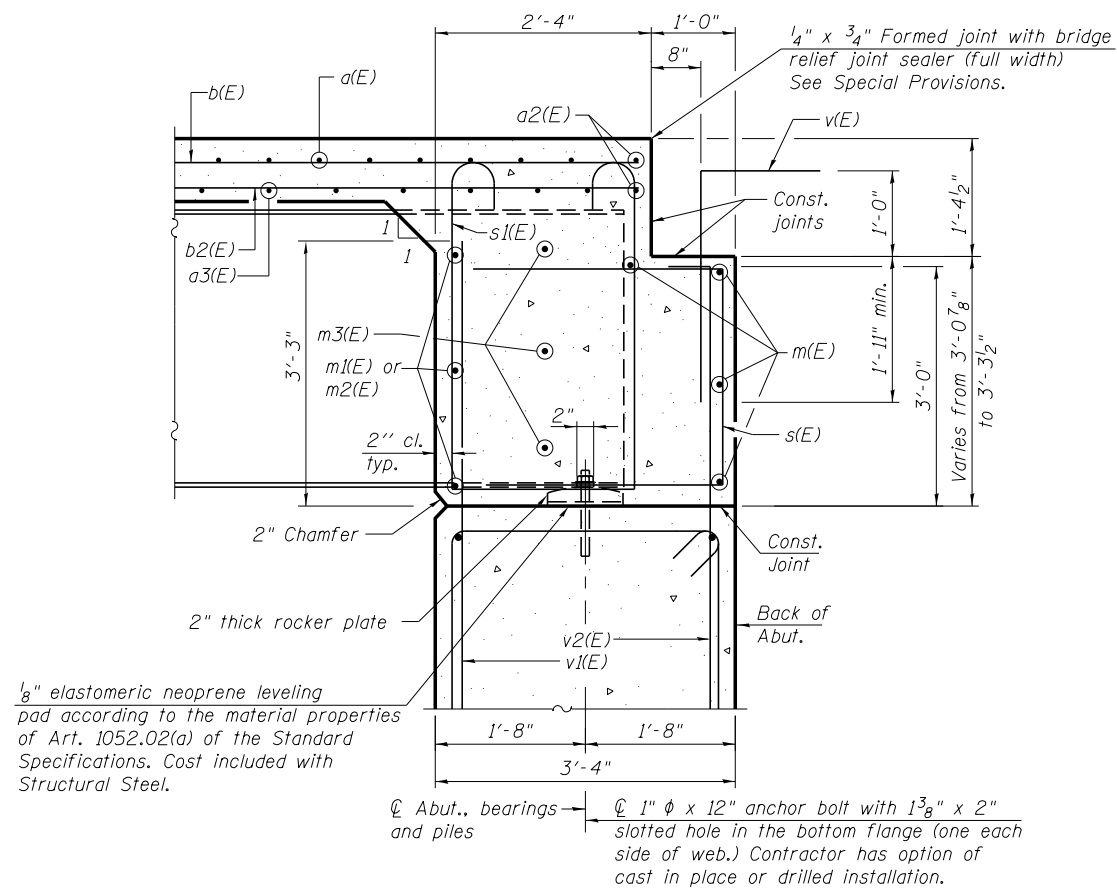


DIAPHRAGM ELEVATION AT ABUTMENT



MINIMUM BAR LAP
#6 bar = 3'-4"

NOTES:

1. Reinforcement bars in diaphragm are billed with superstructure on sheet SA14.
2. Concrete in diaphragm is included with Concrete Superstructure on sheet SA14.
3. For details of bars s(E) & s(E) see sheet SA14.
4. The s(E) and s(E) bars shall be placed parallel to the girders. Spacing for these bars shall be at right angles to the girders.

SECTION A-A

(Dimensions at right angles to abutment, except as noted)



Alfred Benesch & Company
205 North Michigan Avenue, Suite 2400
Chicago, Illinois 60601
312-565-0450 Job No. 10056

FILE NAME =	0900165.68620.15.dkt3.dgn
USER NAME =	mbecker
PLOT SCALE =	
PLOT DATE =	7/16/2012

DESIGNED -	DTS	REVISED -	
CHECKED -	MRB	REVISED -	
DRAWN -	PRT	REVISED -	
CHECKED -	MRB	REVISED -	

**STATE OF ILLINOIS
DEPARTMENT OF TRANSPORTATION**

**DIAPHRAGM DETAILS
STRUCTURE NO. 090-0165 / 0166**

SHEET NO. SA15 OF SA47 SHEETS

F.A.I. RTE.	SECTION	COUNTY	TOTAL SHEETS	SHEET NO.
74	90-[14R;(14HB-4;14,14HVB)BR]	TAZEWELL	2433	1879
ILLINOIS FED. AID PROJECT			CONTRACT NO. 68620	