

SEC. THRU ABUT.

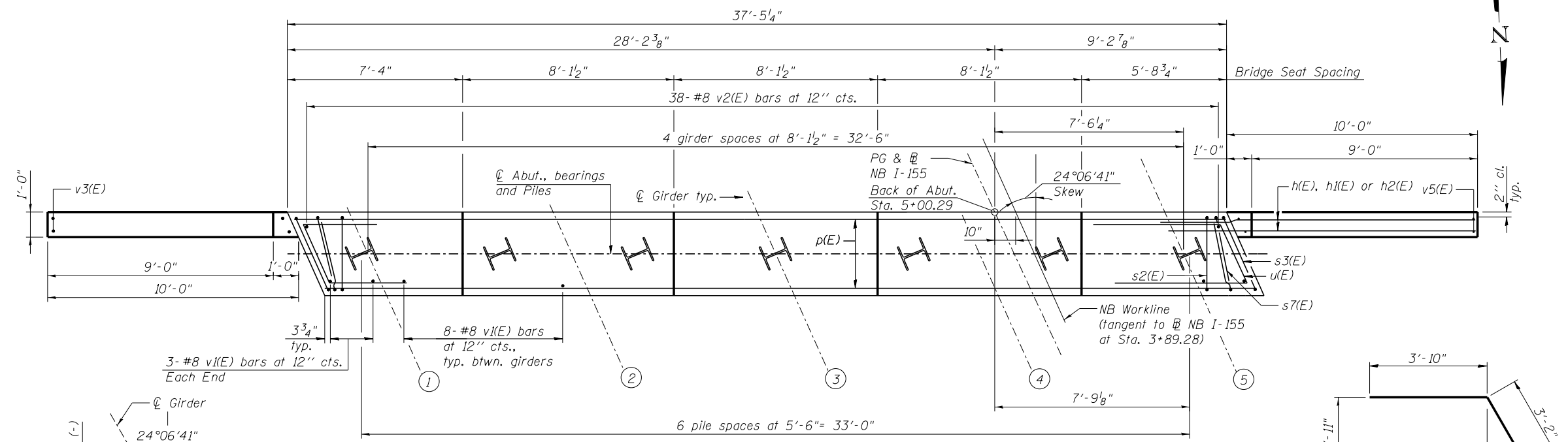
BILL OF MATERIAL

Bar	No.	Size	Length	Shape
h(E)	42	#6	12'-5"	—
h1(E)	6	#6	19'-11"	—
h2(E)	4	#6	10'-2"	—
p(E)	8	#7	36'-11"	—
p1(E)	8	#5	20'-1"	—
p3(E)	4	#5	7'-9"	—
s2(E)	32	#5	13'-3"	□
s3(E)	2	#5	13'-11"	□
s4(E)	64	#5	4'-4"	□
s5(E)	8	#5	4'-8"	□
s6(E)	9	#5	6'-10"	□
s7(E)	4	#5	9'-2"	□
u(E)	8	#6	10'-10"	□
v1(E)	38	#8	6'-6"	—
v2(E)	38	#8	7'-7"	—
v3(E)	11	#5	11'-10"	—
v5(E)	11	#5	12'-8"	—
Concrete Structures		Cu. Yd.	22.4	
Reinforcement Bars, Epoxy Coated		Pound	4,570	
Furnishing Steel Piles HP12X53		Foot	546	
Driving Piles		Foot	546	

Bars indicated thus 4x2-#5 etc. indicates 4 lines of bars with 2 lengths per line.

NOTES:

- For details of piles, see sheet SA30.
- Pour steps monolithically with cap.
- Adjust s7(E) bars in field to form a single closed stirrup between the s2(E) bar and the s3(E) bar.
- h1(E) or h2(E) bars shall not be embedded in the approach slab.
- Adjust bar spacing to avoid anchor bolt locations.

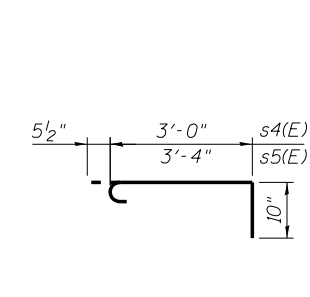


MIN. BAR LAP

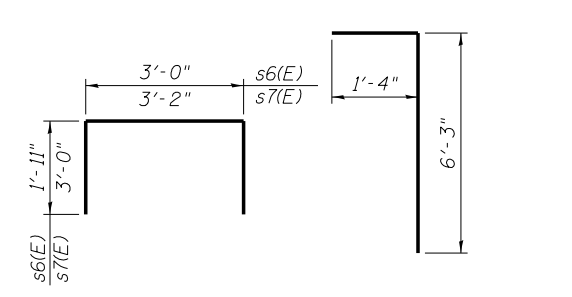
#5 bar = 3'-3"

PLAN

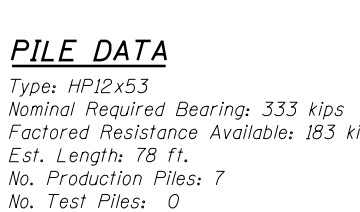
BAR h2(E)



BAR u(E)

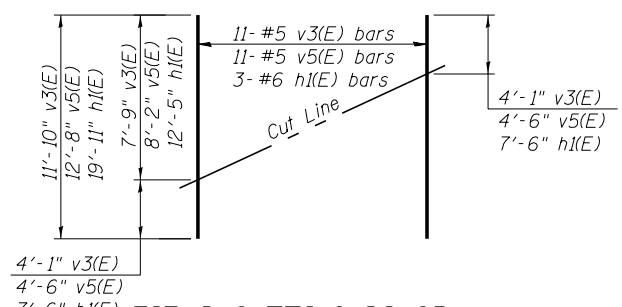


ANCHOR BOLT DETAIL



PILE DATA

Type: HP12x53  
 Nominal Required Bearing: 333 kips  
 Factored Resistance Available: 183 kips  
 Est. Length: 78 ft.  
 No. Production Piles: 7  
 No. Test Piles: 0



FIELD CUTTING DIAGRAM

Order v3(E), v5(E) and h1(E) full length. Cut as shown and use remainder of bars in opposite face.

BARS s2(E) & s3(E)



BARS s4(E) & s5(E)



BARS s6(E) & s7(E)



BAR v2(E)



Alfred Benesch & Company  
 205 North Michigan Avenue, Suite 2400  
 Chicago, Illinois 60601  
 312-565-0450 Job No. 10056

DESIGNED - DTS	REVISD -
CHECKED - SLD	REVISD -
DRAWN - PRT	REVISD -
CHECKED - SLD	REVISD -

STATE OF ILLINOIS  
 DEPARTMENT OF TRANSPORTATION

NB SOUTH ABUTMENT DETAILS  
 STRUCTURE NO. 090-0165 / 0166

F.A.I. R.T.E.	SECTION	COUNTY	TOTAL SHEETS	SHEET NO.
74	90-[14R]14HB-4,14,14HB[BR]	TAZEWELL	2433	1890
CONTRACT NO. 68620				

SHEET NO. SA26 OF SA47 SHEETS

ILLINOIS FED. AID PROJECT

11:14:36 AM  
 x:\10000s\10056\engineer\ing-documents\phase-1\1555over174\final\0900165\_68620-26\_abut3.dgn  
 7/16/2012