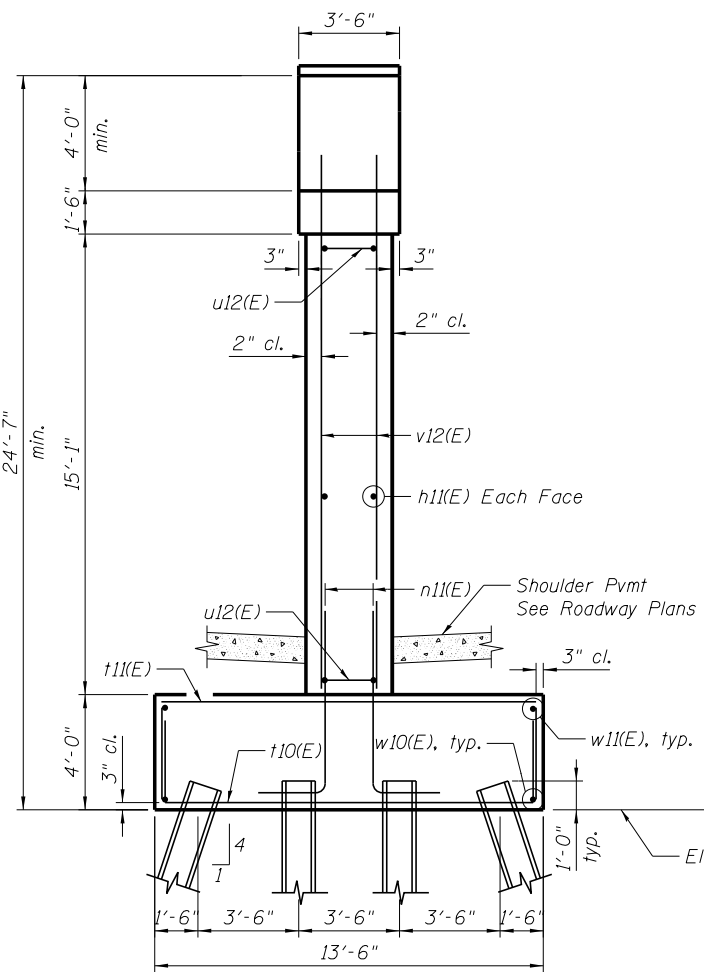
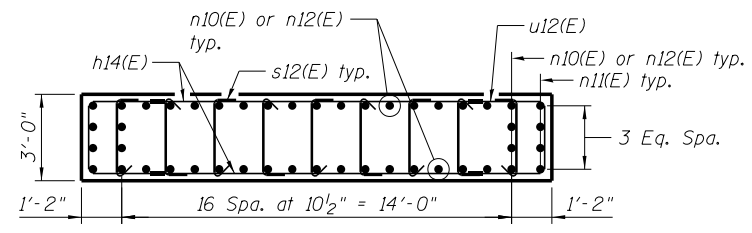


ANCHOR BOLT DETAIL



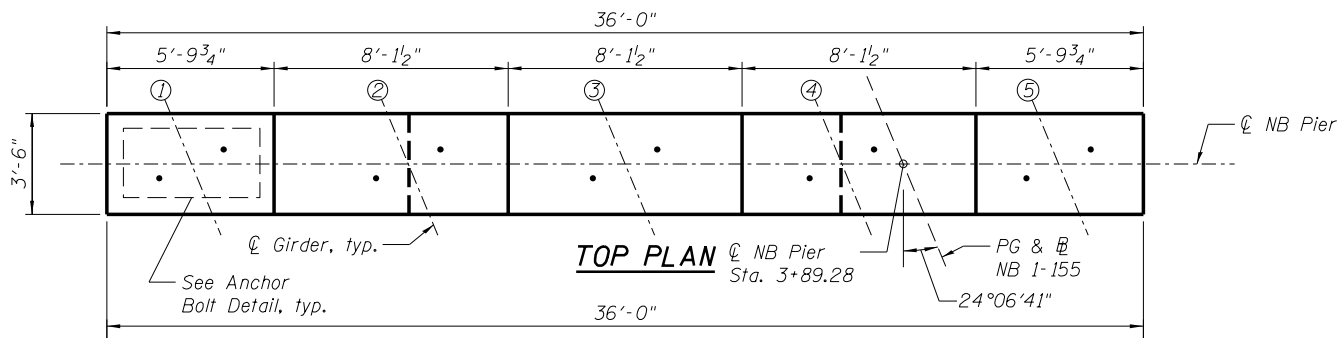
END VIEW



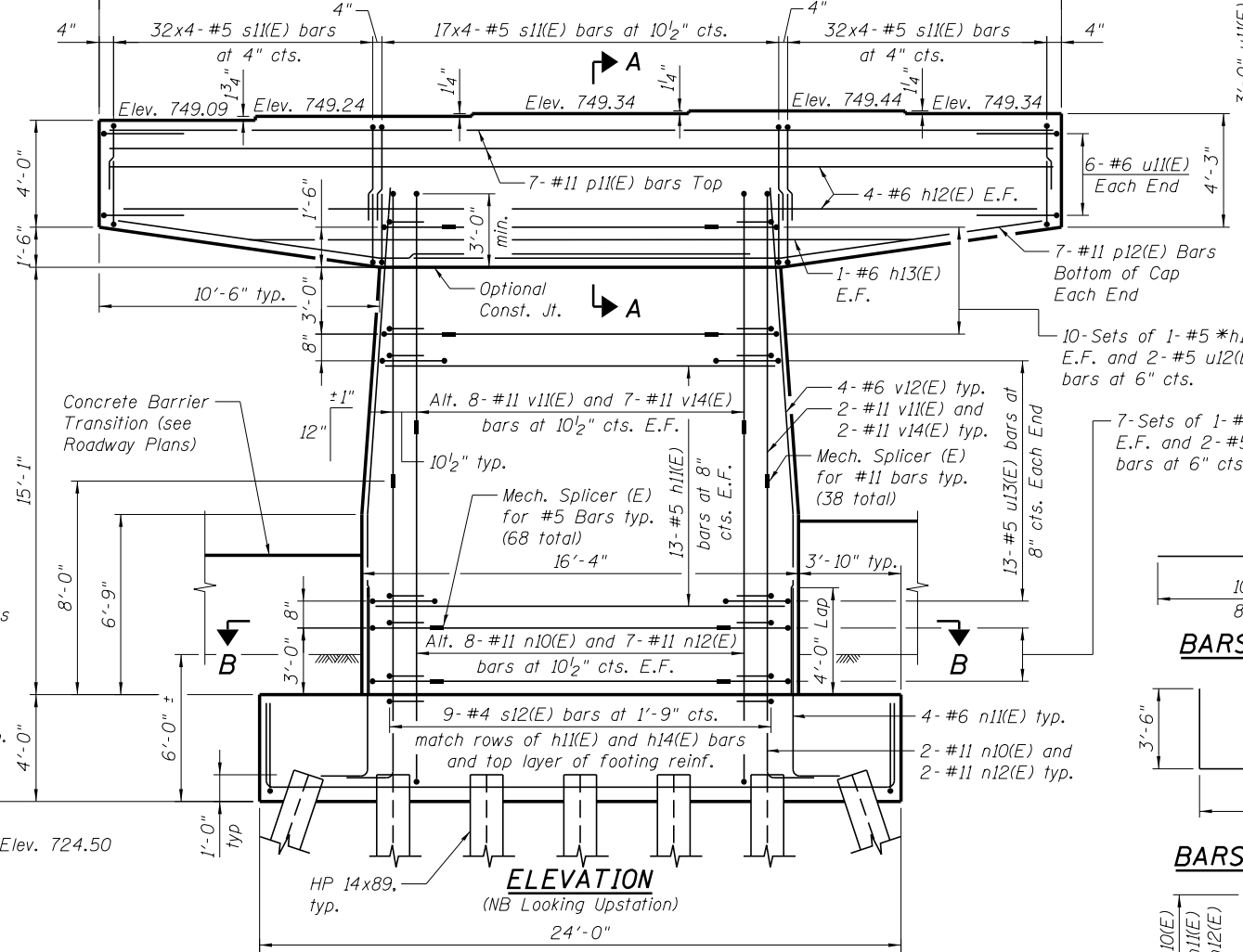
SECTION B-B

PILE DATA

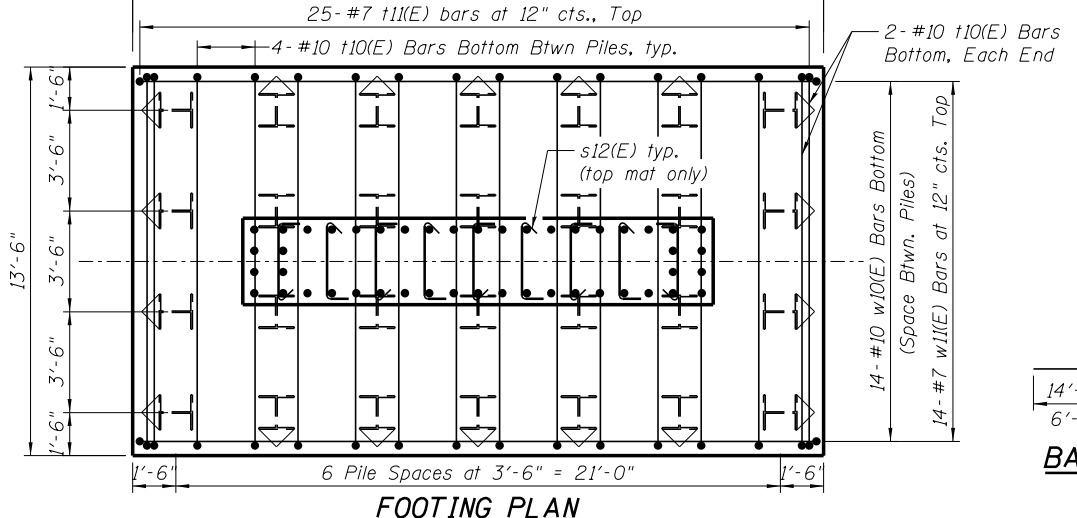
Type: HP14x89
 Nominal Required Bearing 344 kips
 Factored Resistance Available: 189 kips
 Est. Length: 73 ft.
 No. Production Piles: 28
 No. Test Piles: 0



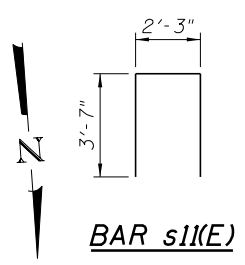
TOP PLAN



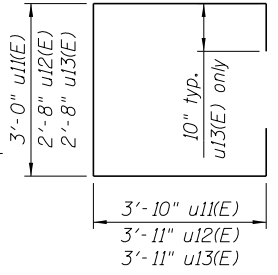
ELEVATION
(NB Looking Upstation)



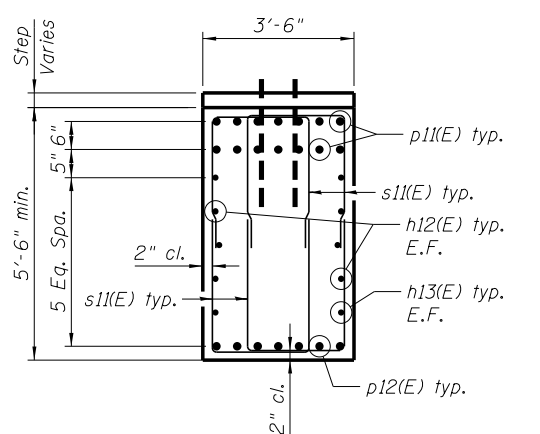
FOOTING PLAN
(Showing Bottom Reinforcing)



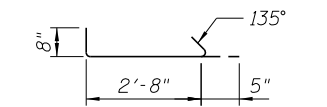
BAR s11(E)



BARS u11(E), u12(E) & u13(E)



SECTION A-A
(Stem reinforcement and h14(E) bars not shown for clarity)



BAR s12(E)

BILL OF MATERIAL

Bar	No.	Size	Length	Shape
h11(E)	26	#5	15'-0"	
h12(E)	8	#6	35'-8"	
h13(E)	2	#6	25'-2"	
h14(E)	34	#5	8'-2"	
n10(E)	20	#11	13'-7"	
n11(E)	8	#6	7'-11"	
n12(E)	18	#11	15'-7"	
p11(E)	14	#11	35'-8"	
p12(E)	14	#11	24'-7"	
s11(E)	324	#5	9'-5"	
s12(E)	279	#4	3'-9"	
t10(E)	28	#10	20'-0"	
t11(E)	25	#7	13'-1"	
u11(E)	12	#6	10'-8"	
u12(E)	34	#5	10'-6"	
u13(E)	26	#5	12'-2"	
v11(E)	20	#11	12'-0"	
v12(E)	8	#6	19'-0"	
v14(E)	18	#11	10'-0"	
w10(E)	14	#10	30'-6"	
w11(E)	14	#7	23'-7"	
Structure Excavation		Cu. Yd.	164	
Concrete Structures		Cu. Yd.	99.8	
Reinforcement Bars, Epoxy Coated		Pound	19,710	
Furnishing Steel Piles HP14X89		Foot	2,044	
Driving Piles		Foot	2,044	

BARS v11(E) & v14(E)

BARS t10(E) & w10(E)

BARS n10(E), n11(E) & n12(E)

BARS p12(E) & v12(E)

NOTES:

- Space reinforcement in cap to miss anchor bolts.
- Pour steps monolithically with cap.

benesch
 engineers · scientists · planners
 Alfred Benesch & Company
 205 North Michigan Avenue, Suite 2400
 Chicago, Illinois 60601
 312-565-0450 Job No. 10056

FILE NAME =	USER NAME = mbecker	DESIGNED - JLS	REVISED -
0900165.68620.28.pier1.dgn		CHECKED - AMB	REVISED -
		PLOT SCALE =	REVISED -
		PLOT DATE = 7/16/2012	REVISED -

STATE OF ILLINOIS
DEPARTMENT OF TRANSPORTATION

NB PIER DETAILS
STRUCTURE NO. 090-0165 / 0166
 SHEET NO. SA28 OF SA47 SHEETS

F.A.I. RT.E.	SECTION	COUNTY	TOTAL SHEETS	SHEET NO.
74	90-[14R;14HB-4,14,14HB]BR	TAZEWELL	2433	1892
			CONTRACT NO. 68620	
ILLINOIS FED. AID PROJECT				

x:\10000s\10056\engineer\ing-documents\phase-1\155over-174\final\0900165-68620-28.pier-1.dgn 10:53:28 AM 7/16/2012