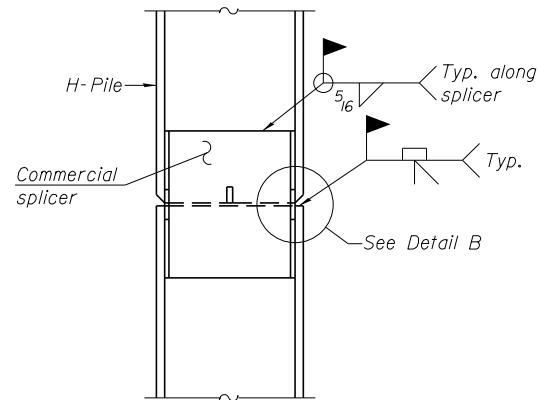
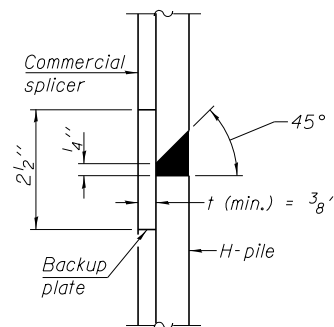


STEEL PILE TABLE

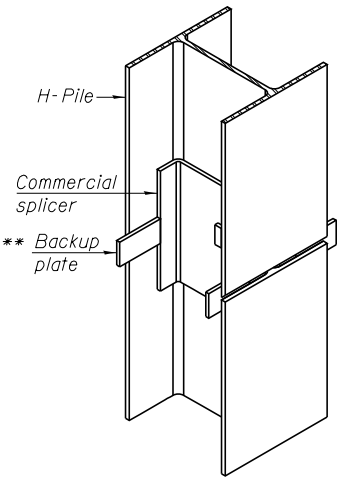
| Designation | Depth d | Flange width br | Web and Flange thickness t | Encasement diameter A |
|-------------|---------|-----------------|----------------------------|-----------------------|
| HP 14x117 | 14 1/4" | 14 7/8" | 13/16" | 30" |
| x102 | 14" | 14 3/4" | 1/16" | 30" |
| x89 | 13 7/8" | 14 3/4" | 5/8" | 30" |
| x73 | 13 5/8" | 14 5/8" | 1/2" | 30" |
| HP 12x84 | 12 1/4" | 12 1/4" | 1/16" | 24" |
| x74 | 12 1/8" | 12 1/4" | 5/8" | 24" |
| x63 | 12" | 12 1/8" | 1/2" | 24" |
| x53 | 11 3/4" | 12" | 7/16" | 24" |
| HP 10x57 | 10" | 10 1/4" | 9/16" | 24" |
| x42 | 9 3/4" | 10 1/8" | 7/16" | 24" |
| HP 8x36 | 8" | 8 1/8" | 7/16" | 18" |



ELEVATION

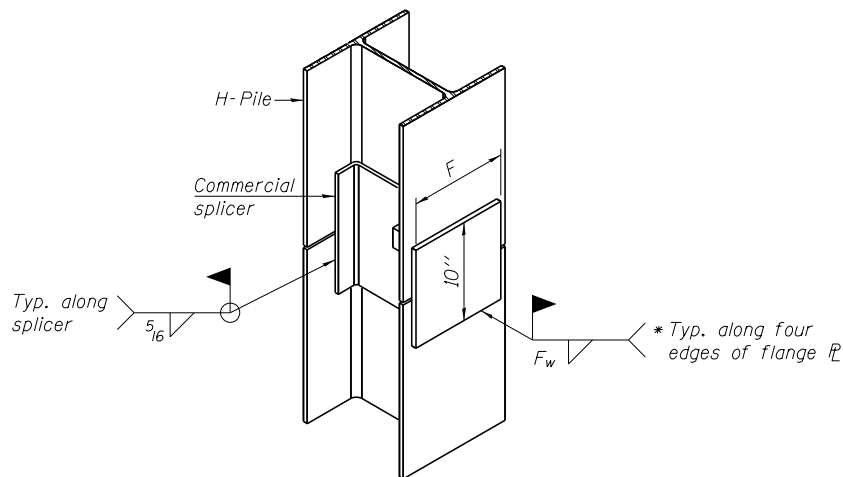


DETAIL "B"



ISOMETRIC VIEW

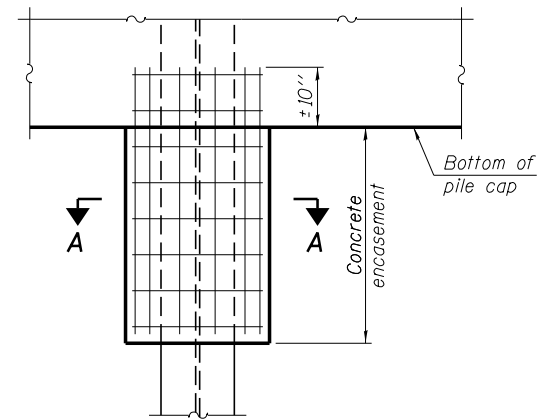
WELDED COMMERCIAL SPLICE



ISOMETRIC VIEW

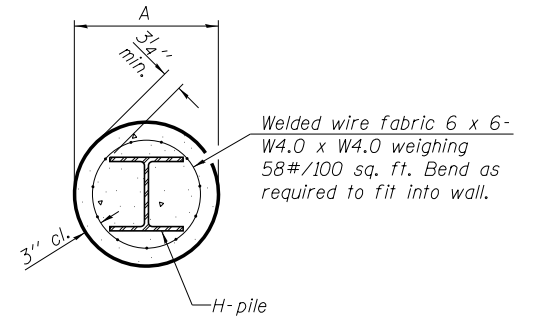
WELDED COMMERCIAL SPLICE ALTERNATE

- * Interrupt welds 1/4" from end of web and/or each flange.
- ** Remove portions of backup plates that extend outside the flanges.
- *** Weld size per pile shoe manufacturer (5/16" min.).



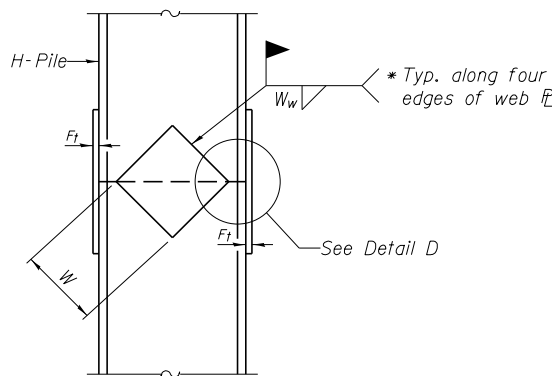
ELEVATION

PILE ENCASEMENT

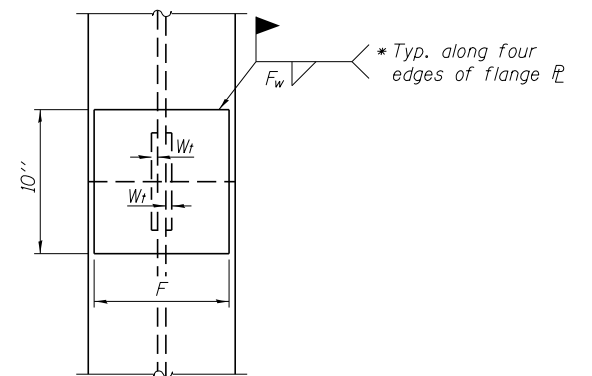


SECTION A-A

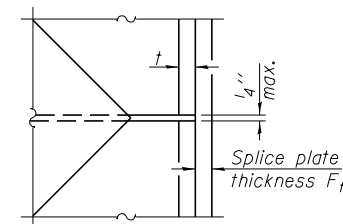
Note:
Forms for encasement may be omitted when soil conditions permit.



ELEVATION



END VIEW



DETAIL D

WELDED PLATE FIELD SPLICE

| Designation | F | Ft | Fw | W | Wt | Ww |
|-------------|---------|------|-------|--------|------|------|
| HP 14x117 | 12 1/2" | 1" | 7/8" | 7 3/4" | 5/8" | 1/2" |
| x102 | 12 1/2" | 7/8" | 3/4" | 7 3/4" | 5/8" | 1/2" |
| x89 | 12 1/2" | 3/4" | 1/16" | 7 3/4" | 5/8" | 1/2" |
| x73 | 12 1/2" | 5/8" | 9/16" | 7 3/4" | 5/8" | 1/2" |
| HP 12x84 | 10" | 7/8" | 1/16" | 6 1/2" | 5/8" | 1/2" |
| x74 | 10" | 7/8" | 1/16" | 6 1/2" | 5/8" | 1/2" |
| x63 | 10" | 5/8" | 1/2" | 6 1/2" | 1/2" | 3/8" |
| x53 | 10" | 5/8" | 1/2" | 6 1/2" | 1/2" | 3/8" |
| HP 10x57 | 8" | 3/4" | 9/16" | 5 1/4" | 1/2" | 3/8" |
| x42 | 8" | 5/8" | 9/16" | 5 1/4" | 1/2" | 3/8" |
| HP 8x36 | 7" | 5/8" | 7/16" | 4 1/4" | 1/2" | 3/8" |

Note:
The steel H-piles shall be according to AASHTO M270 Grade 50.

F-HP 1-27-12
benesch Alfred Benesch & Company
 engineers · scientists · planners 205 North Michigan Avenue, Suite 2400
 Chicago, Illinois 60601
 312-565-0450 Job No. 10056

| | | | |
|---------------------------------------|-----------------------|----------------|-----------|
| FILE NAME = 0900165.68620.30.pile.dgn | USER NAME = mbecker | DESIGNED - MFB | REVISED - |
| | | CHECKED - MRB | REVISED - |
| | PLOT SCALE = | DRAWN - PRT | REVISED - |
| | PLOT DATE = 7/16/2012 | CHECKED - MRB | REVISED - |

**STATE OF ILLINOIS
DEPARTMENT OF TRANSPORTATION**

**HP PILE DETAILS
STRUCTURE NO. 090-0165 / 0166**

SHEET NO. SA30 OF SA47 SHEETS

| F.A.I. R.E. | SECTION | COUNTY | TOTAL SHEETS | SHEET NO. |
|---------------------------|-----------------------------|----------|--------------|-----------|
| 74 | 90-[14R(14HB-4,14,14HVB)BR] | TAZEWELL | 2433 | 1894 |
| CONTRACT NO. 68620 | | | | |
| ILLINOIS FED. AID PROJECT | | | | |