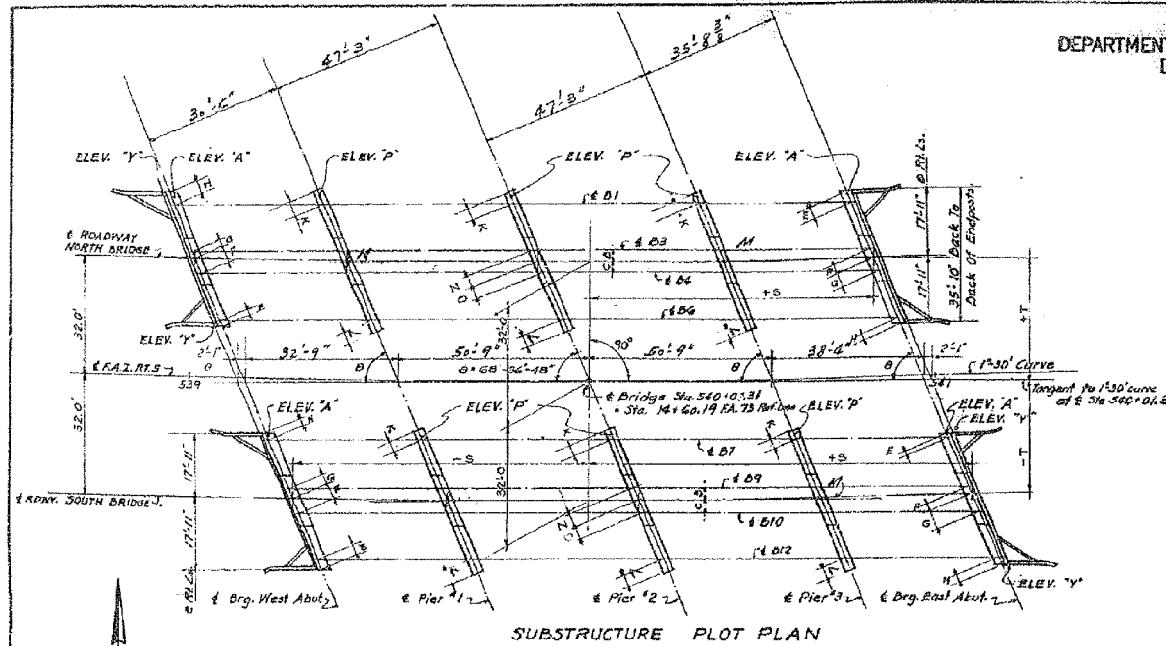


STATE OF ILLINOIS
DEPARTMENT OF PUBLIC WORKS & BUILDINGS
DIVISION OF HIGHWAYS

ROUTE No.	SEC.	COUNTY	SECTION	SHEET
F.A. 174		TAZEWELL	89	32
FED. ROAD DIST. No. 7		ILLINOIS		

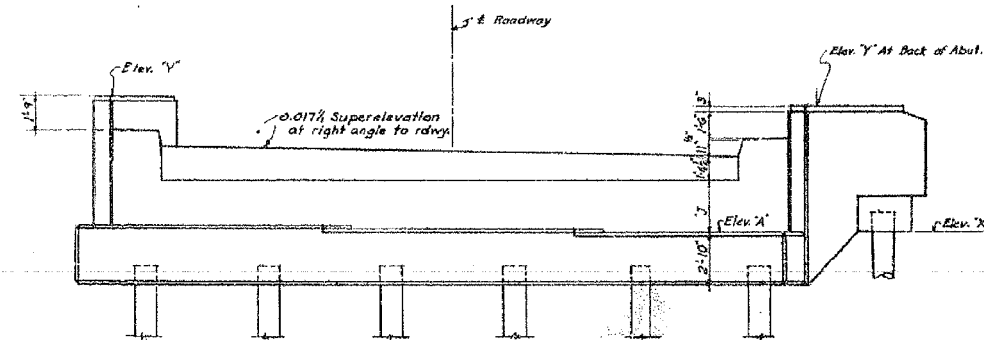


VARIABLES FOR ABUTMENTS

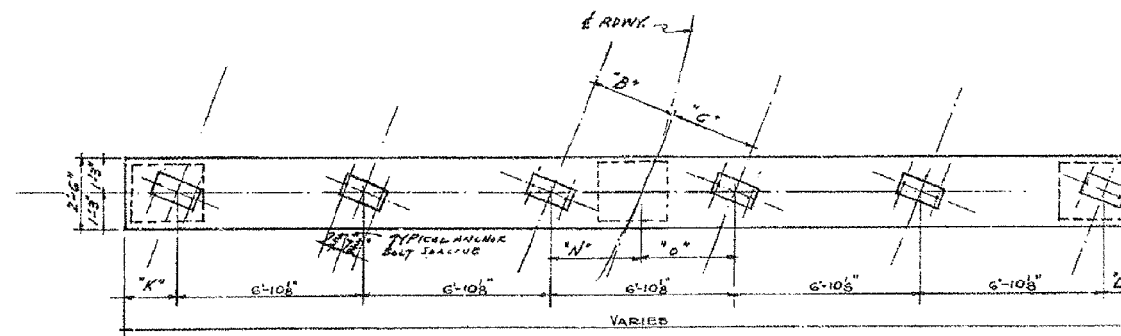
ABUTMENT	ELEV. 'A'	ELEV. 'Y'	ELEV. 'X'	E	F	G	H	J
EAST ABUTM'T. NORTH BRIDGE	745.76	North Side 752.70	746.61	1'-10 3/8"	3'-5 5/8"	3'-4 1/2"	1'-11 3/8"	2'-10 1/2"
		South Side 753.36	747.07					
EAST ABUTM'T. SOUTH BRIDGE	746.07	North Side 753.00	746.32	2'-4 1/2"	2'-10 7/8"	3'-11 1/8"	1'-3 1/2"	2'-10 1/2"
		South Side 753.66	747.38					
WEST ABUTM'T. NORTH BRIDGE	743.57	North Side 750.48	743.98	1'-9 3/8"	3'-10 1/8"	2'-11 1/8"	2'-8 5/8"	2'-10"
		South Side 751.15	744.64					
WEST ABUTM'T. SOUTH BRIDGE	743.90	North Side 750.81	744.29	2'-4"	3'-3 3/8"	3'-7"	2'-0 1/2"	2'-10"
		South Side 751.49	744.95					

VARIABLES FOR PIERS

PIER	ELEV. 'P'	P	G	K	L	M	N	O
PIER #1 NORTH BRIDGE	743.92	3'-5 5/8"	2'-10 1/8"	1'-10 1/2"	2'-5 1/2"	8'-6 3/4"	3'-8 1/8"	3'-1 1/2"
PIER #2 NORTH BRIDGE	744.65	3'-11 1/2"	2'-4 3/4"	1'-2 5/8"	2'-10 3/8"	9'-3 1/2"	4'-3 1/2"	2'-6 3/8"
PIER #3 NORTH BRIDGE	745.22	3'-9 3/4"	2'-6 1/8"	1'-3 1/2"	2'-7 1/2"	9'-10 3/8"	4'-1 1/8"	2'-9 1/8"
PIER #1 SOUTH BRIDGE	744.25	3'-7 3/4"	2'-6 3/4"	1'-5 3/8"	2'-9 1/2"	8'-10 3/8"	4'-1 1/8"	2'-9 1/8"
PIER #2 SOUTH BRIDGE	744.97	3'-11 3/4"	2'-4 3/4"	1'-2"	2'-10 1/8"	9'-7 3/8"	4'-5 1/4"	2'-6 3/8"
PIER #3 SOUTH BRIDGE	745.53	3'-5 3/4"	2'-10 1/8"	1'-7 5/8"	2'-2 3/4"	10'-2"	3'-8 1/8"	3'-1 1/2"



ELEVATION WEST ABUTMENTS
Looking West
For detail see 'Abutments' sh. #31



TOP PLAN - PIERS #1 & #3

TABLE OF 'S' AND 'T'

	CL BRG. WEST ABUT.	CL PIER #1	CL PIER #2	CL PIER #3	CL BRG. EAST ABUT.
NORTH BRIDGE					
S	-96.51	-63.49	-12.54	38.14	76.25
T	33.23	32.53	32.02	32.19	32.77
SOUTH BRIDGE					
S	-71.23	-38.29	12.52	63.08	101.10
T	-31.34	-31.81	-31.92	-31.48	-30.67

FOR INFORMATION ONLY

SUBSTRUCTURE DETAILS

F.A.I. ROUTE 74 - SECTION 90-14HB-4

F.A.I. ROUTE 74 OVER F.A. ROUTE 73

STATION 540+01.31

TAZEWELL COUNTY

WARREN AND VAN PRAAG, INC.
CONSULTING ENGINEERS - DECATUR, ILLINOIS