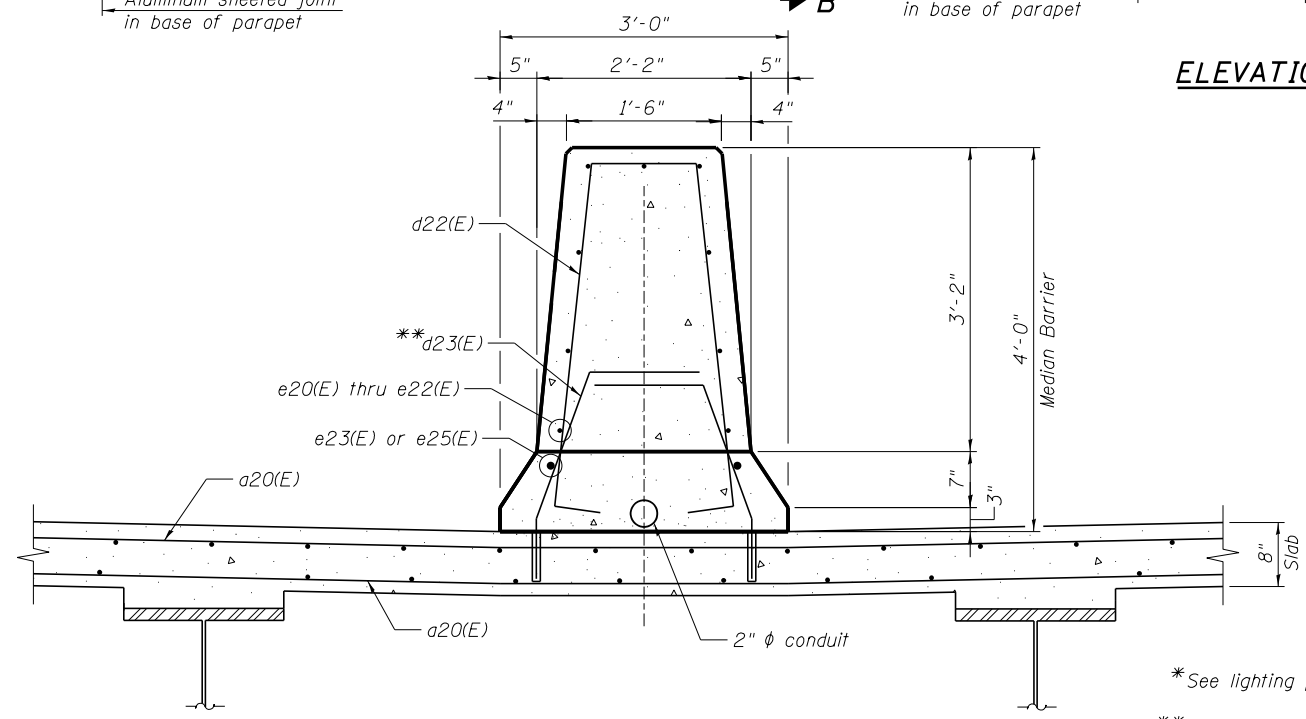
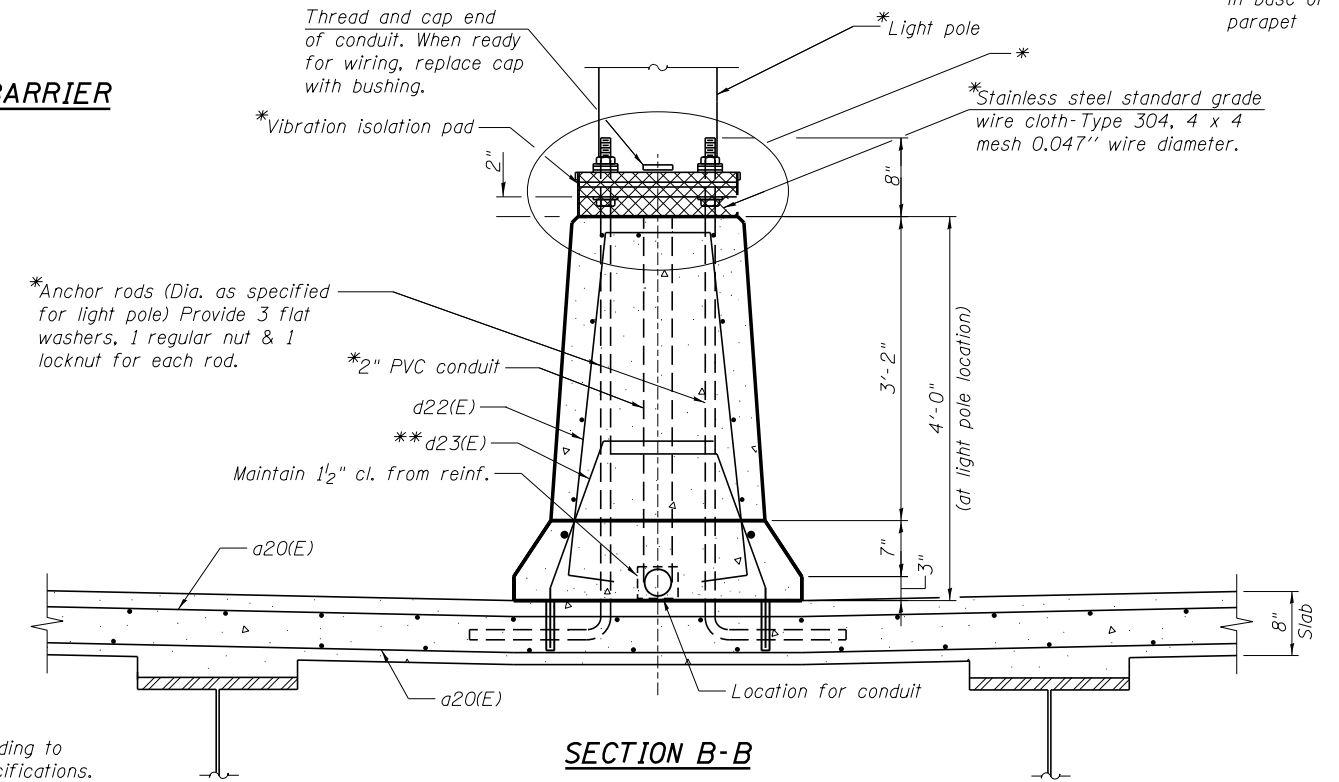


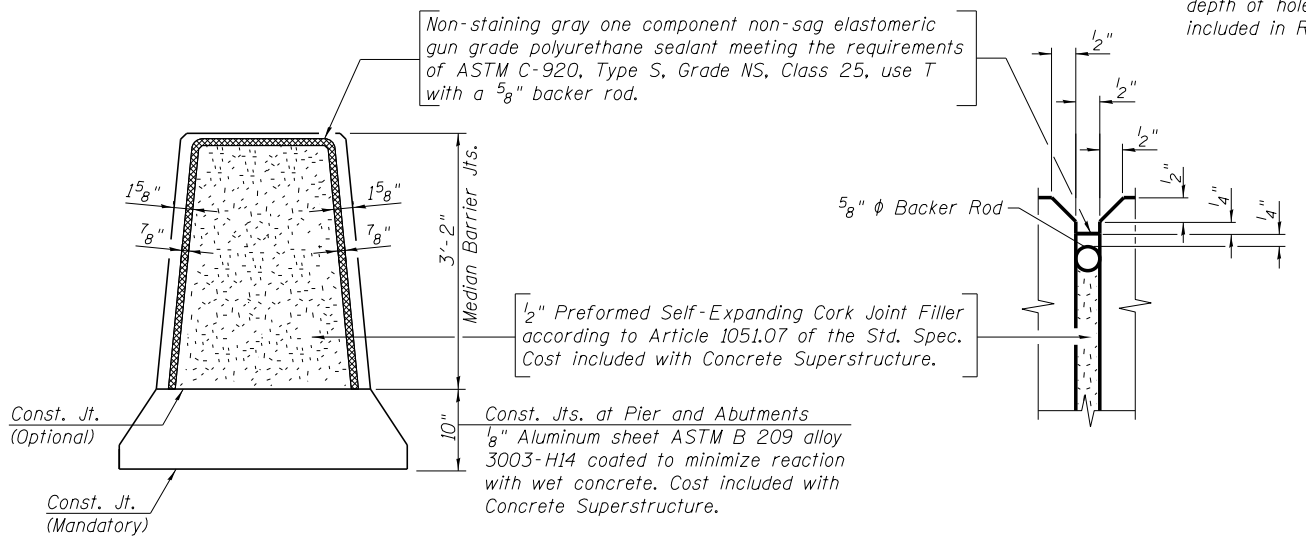
ELEVATION OF MEDIAN BARRIER
(Looking North)



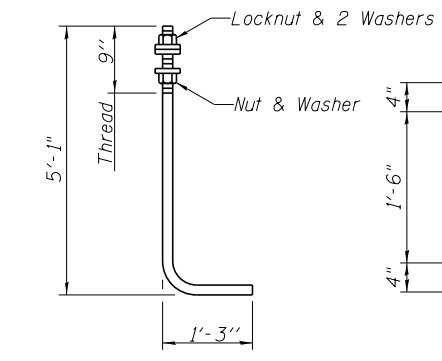
SECTION THRU MEDIAN BARRIER



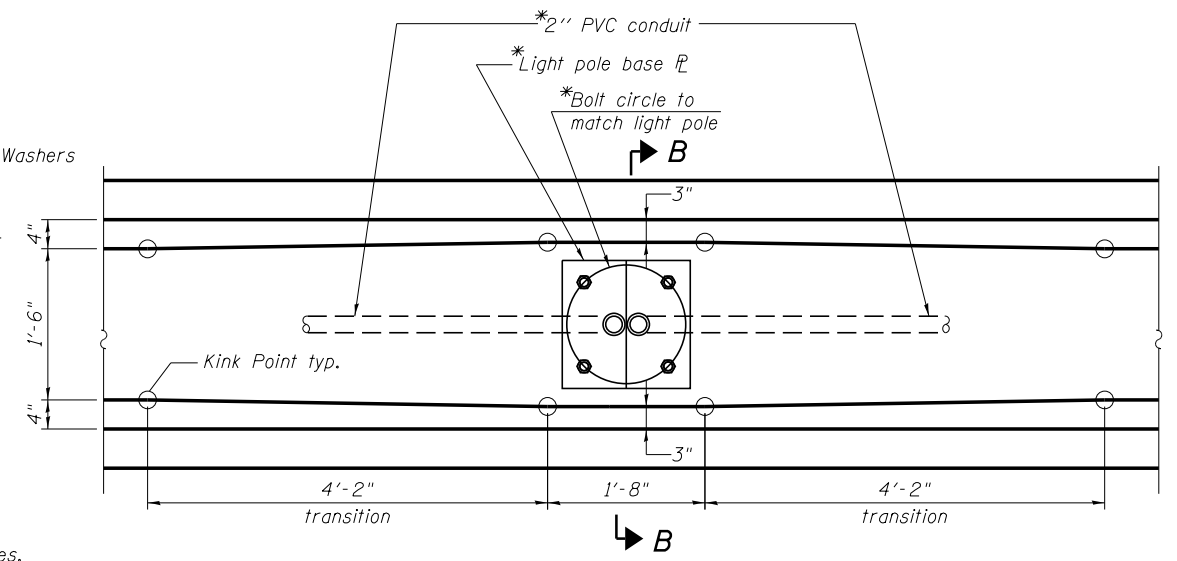
SECTION B-B



MEDIAN BARRIER JOINT DETAILS



ANCHOR ROD
*Diameter as specified for light poles.
(ASTM F 1554 Grade 105)



PLAN AT LIGHTPOLE

Note:
Cost of anchor rods and conduit is included with Concrete Superstructure.

benesch
engineers · scientists · planners

Alfred Benesch & Company
205 North Michigan Avenue, Suite 2400
Chicago, Illinois 60601
312-565-0450 Job No. 10056

FILE NAME =	USER NAME = mbecker	DESIGNED - MFB	REVISED -
0900169.68620.22.dkt2.dgn	PLOT SCALE =	CHECKED - MRB	REVISED -
	PLOT DATE = 7/16/2012	DRAWN - PRT	REVISED -
		CHECKED - MRB	REVISED -

STATE OF ILLINOIS
DEPARTMENT OF TRANSPORTATION

SUPERSTRUCTURE DETAILS 2 OF 2
STRUCTURE NO. 090-0169
SHEET NO. SC22 OF SC63 SHEETS

F.A.I. R.T.E.	SECTION	COUNTY	TOTAL SHEETS	SHEET NO.
74	90-[14R(14HB-4,14,14HVB)BR]	TAZEWELL	2433	1998
CONTRACT NO. 68620			ILLINOIS FED. AID PROJECT	

x:\10000s\10056\engineer-ing-documents-phase-1\174over-Jackson\Final\0900169-68620-22-dkt2.dgn 11:19:26 AM 7/16/2012