

STATE OF ILLINOIS
DEPARTMENT OF PUBLIC WORKS & BUILDINGS
DIVISION OF HIGHWAYS

ROUTE No.	SEC.	COUNTY	TOTAL SHEETS	SHEET No.
F.A.I. RT. 74	90-14	TAZEWELL	24	7
FED. ROAD DIST. No. 71	ILLINOIS	PROJECT 1-16-74-4(38)	6	2

SHEET 1 OF 15
GENERAL NOTES

CLASS "X" CONCRETE SHALL BE USED THROUGHOUT UNLESS OTHERWISE NOTED.
THE CONCRETE FLOOR SLAB SHALL BE FINISHED IN ACCORDANCE WITH ARTICLE 61.19 OF THE STANDARD SPECIFICATIONS AND SHALL BE POURED IN ONE CONTINUOUS OPERATION BETWEEN THE LIMITS OF THE CONSTRUCTION JOINTS SHOWN.
ALL CURBS AND SLABS OUTSIDE OF LONGITUDINAL BONDED CONSTRUCTION JOINTS SHALL BE POURED MONOLITHICALLY.

ALL ROCKERS, BOLSTERS, BEARING PLATES, LEAD PLATES, PINNIES AND ANCHOR BOLTS SHALL BE FABRICATED AND SET IN ACCORDANCE WITH ARTICLE 51.16 OF THE STANDARD SPECIFICATIONS AND ARE INCLUDED IN THE QUANTITIES OF STRUCTURAL STEEL. ESTIMATED WEIGHT 250 LBS.
ANCHOR BOLTS SHALL BE SET BEFORE RIVETING DIAPHRAGMS OVER SUPPORTS.
ROADWAY EXPANSION GUARDS SHALL BE ASSEMBLED IN THE SHOP IN THE PROPER POSITION WITH THE ADJACENT ENDS IN PLACE AND SHALL BE LEFT ASSEMBLED FOR SHOP INSPECTION.
EXPANSION GUARDS SHALL BE FABRICATED AND ERECTED IN ACCORDANCE WITH ARTICLE 51.13 (4) OF THE STANDARD SPECIFICATIONS AND ARE INCLUDED IN QUANTITIES OF STRUCTURAL STEEL EXCEPT AS OTHERWISE NOTED. ALL STRUCTURAL STEEL SHALL RECEIVE ONE SHOP COAT OF RED LEAD PAINT AND TWO FIELD COATS OF ALUMINUM PAINT. SEE ARTICLES 50.1 TO 50.6 OF THE STANDARD SPECIFICATIONS. ALL PAINT SHALL BE FURNISHED AND APPLIED BY THE CONTRACTOR.

THE CONTRACTOR SHALL DRIVE TWO REINFORCED CONCRETE TEST PILES AT PERMANENT LOCATIONS, ONE IN WEST ABUTMENT RIGHT AND ONE IN EAST ABUTMENT LEFT, AS DIRECTED BY THE ENGINEER BEFORE CASTING THE REMAINDER OF THE PILES.
THE CONTRACTOR SHALL DRIVE TWO THINER TEST PILES, ONE IN PIER NO. 1 LEFT AND ONE IN PIER NO. 3 RIGHT AS DIRECTED BY THE ENGINEER BEFORE ORDERING THE REMAINDER OF THE PILES.

UNLESS OTHERWISE SHOWN ON THE PLANS, REINFORCEMENT BARS SHALL BE LAPPED 20 BAR DIAMETERS.
ALL COVER PLATES SHALL CONFORM TO A.S.T.M. DESIGNATION A 375, STRUCTURAL STEEL FOR WELDING.
ALL ADJUSTMENT PILES SHALL BE DRIVEN IN HOLES (R/O. OF PILE + 4" MIN) DRILLED THRU THE ENTIRE DEPTH OF FILL SO THAT PILES ARE DRIVEN INTO NATURAL GROUND.
COARSE AGGREGATE WHICH IS TO BE USED IN PARAPET AND END POSTS MUST BE ABSOLUTELY FREE OF CHERT, FLINT, LIMONITE, LIGNITE, AND SOFT SANDSTONE.

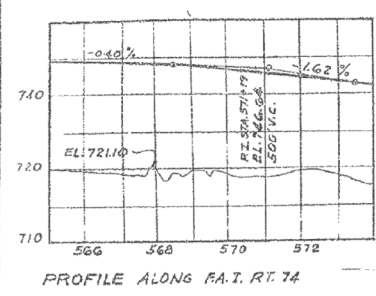
TOTAL BILL OF MATERIAL (SEC. 90-14 ILL.)

ITEM	SUPERSTR.	SUBSTR.	TOTAL
CLASS "X" CONCRETE	CU YDS. 867.7	867.7	1551.7
REINFORCEMENT BARS	LBS. 134,170	81,760	215,930
ERECTING STRUCTURAL STEEL	LBS. 662,850	---	662,850
ALUMINUM HANDRAIL	LN. FT. 1240	---	1240
FURNISHING CONCRETE PILES	LN. FT. ---	2500	2500
DRIVING CONCRETE PILES	LN. FT. ---	2500	2500
FURNISHING CREOSOTED PILES	LN. FT. 5262	---	5262
DRIVING TIMBER PILES	LN. FT. ---	5262	5262
TEST PILES (CONCRETE)	EA. ---	2	2
TEST PILES (TIMBER)	EA. ---	2	2
SLOPE WALL, 4-INCH	SQ. YDS. 1,180	---	1,180
CLASS "A" EXCAVATION FOR STRUCT. CURBS	---	555	555
NAME PLATE	EA. 2	---	2
SODDING	SQ. YDS. ---	---	2532

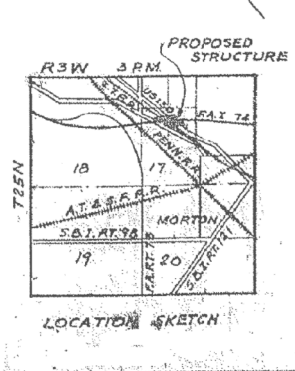
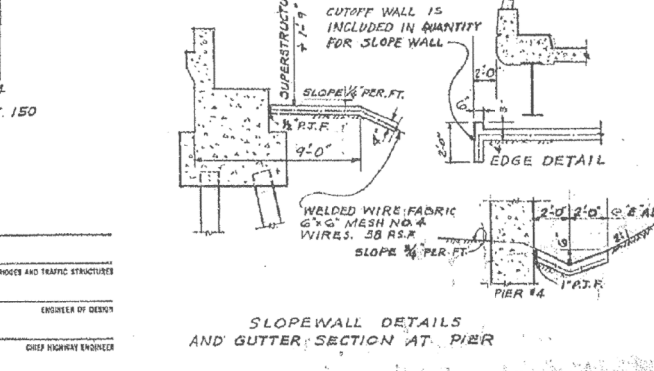
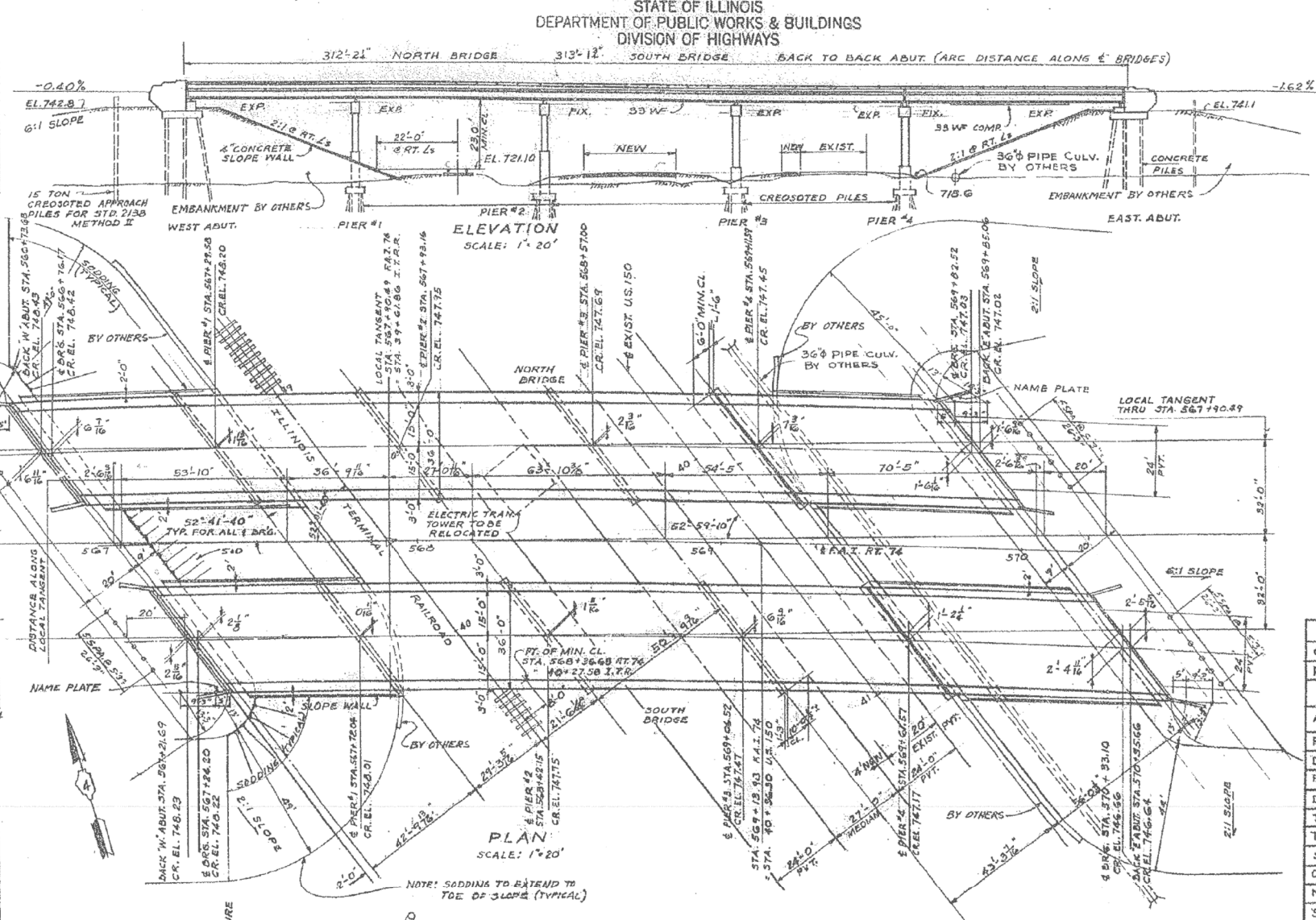
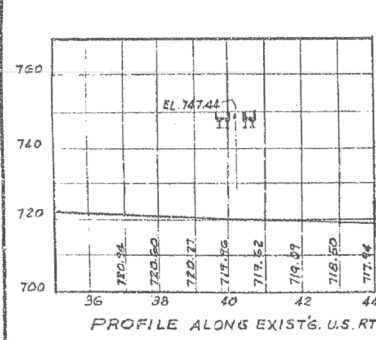
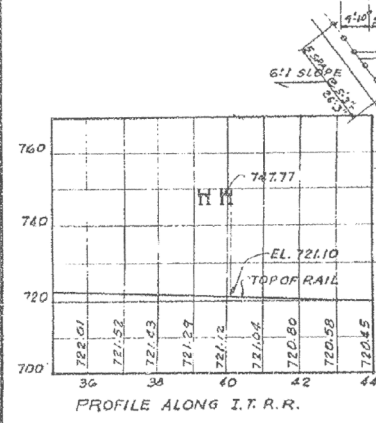
TOTAL BILL OF MATERIAL (SEC. 90-14 ILL.)

ITEM	SUPERSTR.	SUBSTR.	TOTAL
FURNISHING STRUCTURAL STEEL	LBS. 662,850	---	662,850

090-0017 & 090-0018
GENERAL PLAN & ELEVATION
F.A.I. ROUTE 74 SECTION 90-14 ILL.
PROJECT 1-16-74-4(38) 101
F.A.I. ROUTE 74 OVER I.T.R.R. & S.B.I. ROUTE 121
STATION 588+65.40
TAZEWELL COUNTY
WARREN AND VAN PRAAG, INC.
CONSULTING ENGINEERS - DECATUR, ILLINOIS



CURVE DATA
F.A.I. RT. 74
P.I. STA. 576+50.62
A = 13° 43' 11"
D = 0' 38"
R = 13,277.67
T = 1,577.03
L = 2,939.94'
E = 88.32'
S.E. = 0
P.C. STA. 562+03.59
P.T. STA. 591+43.53



STA. 588+65.40
BUILT 196 BY
STATE OF ILLINOIS
F.A.I. RT. 74 SEC. 90-14 ILL.
LOADING: H20-S16 & ALT.
LETTERING FOR NAME PLATE
SEE STA. 2113
DESIGN STRESSES
1. 1000 R.S.I. (SUPER. & SUB. NO. EARTH PRE.)
2. 1000 R.S.I. (SUB. WITH EARTH PRE.)
3. 10"
4. 20,000 R.S.I. (REINK)
5. 18,000 R.S.I. (STRUCT. STEEL)
LOADING: H20-S16 & ALTERNATE
PILE DATA-BRIDGE APPROACH SLAB
TYPE: CREOSOTED CAPACITY-15 TON
ESTIMATED LENGTH - 38'
NO. REAR - 24

DESIGNED H.Y.F.	EXAMINED
CHECKED P.H.M.	ENGINEER OF BRIDGES AND TRAFFIC STRUCTURES
DRAWN H.Y.F.	PASSEL
CHECKED P.H.M.	APPROVED

FOR INFORMATION ONLY

benesch
engineers · scientists · planners
Alfred Benesch & Company
205 North Michigan Avenue, Suite 2400
Chicago, Illinois 60601
312-565-0450 Job No. 10056

FILE NAME =	USER NAME = mbecker	DESIGNED - MFB	REVISED -
0900169.68620.50.exist1.dgn		CHECKED - MRB	REVISED -
	PLOT SCALE =	DRAWN - PRT/LLR	REVISED -
	PLOT DATE = 7/16/2012	CHECKED - MRB	REVISED -

STATE OF ILLINOIS
DEPARTMENT OF TRANSPORTATION

EXISTING PLANS
STRUCTURE NO. 090-0169
SHEET NO. SC50 OF SC63 SHEETS

F.A.I. R.T.	SECTION	COUNTY	TOTAL SHEETS	SHEET NO.
74	90-14R(14HB-4,14,14HB)BRJ	TAZEWELL	2433	2026
			CONTRACT NO. 68620	
ILLINOIS FED. AID PROJECT				

x:\10000s\10056\engineer\ing-documents\phase-1\174over\Jackson\Final\0900169.68620.50.exist1.dgn 11:20:45 AM 7/16/2012