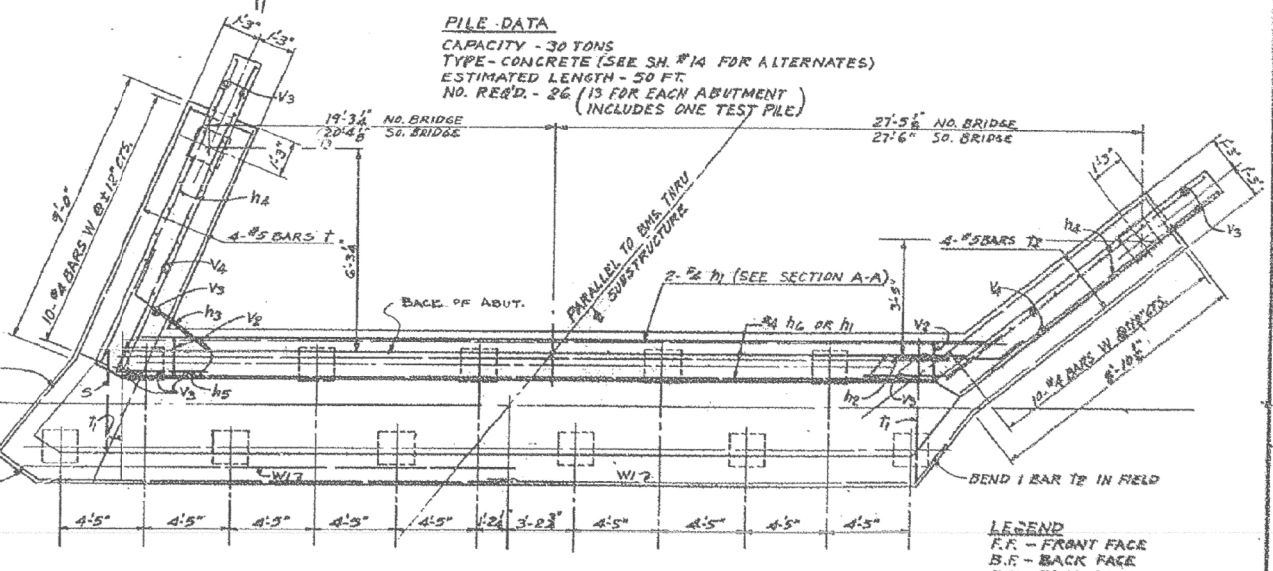
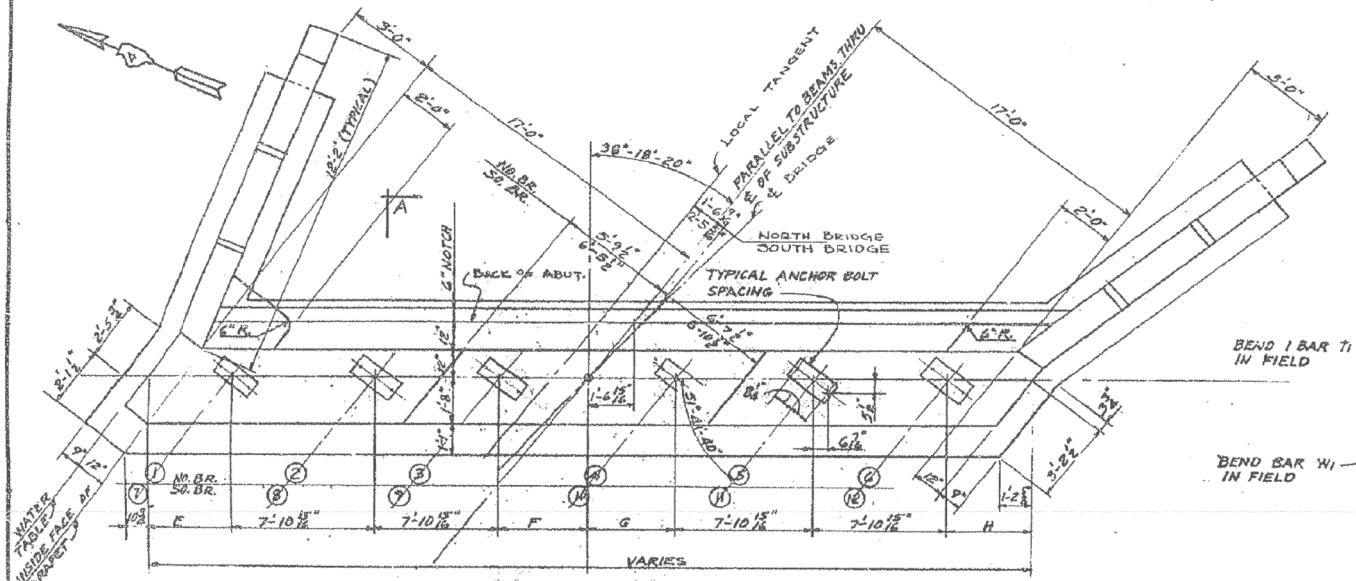
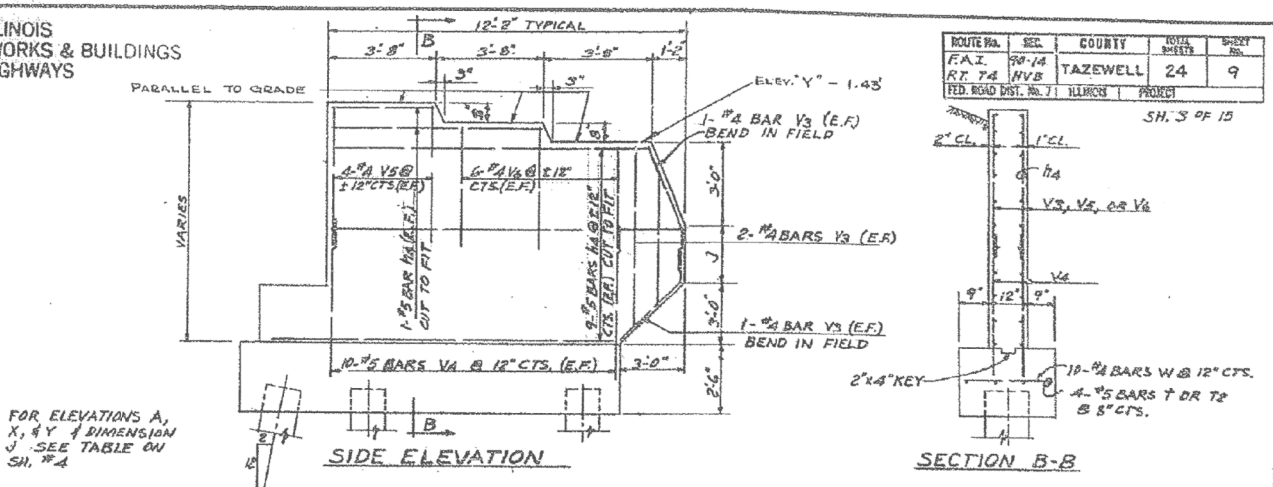
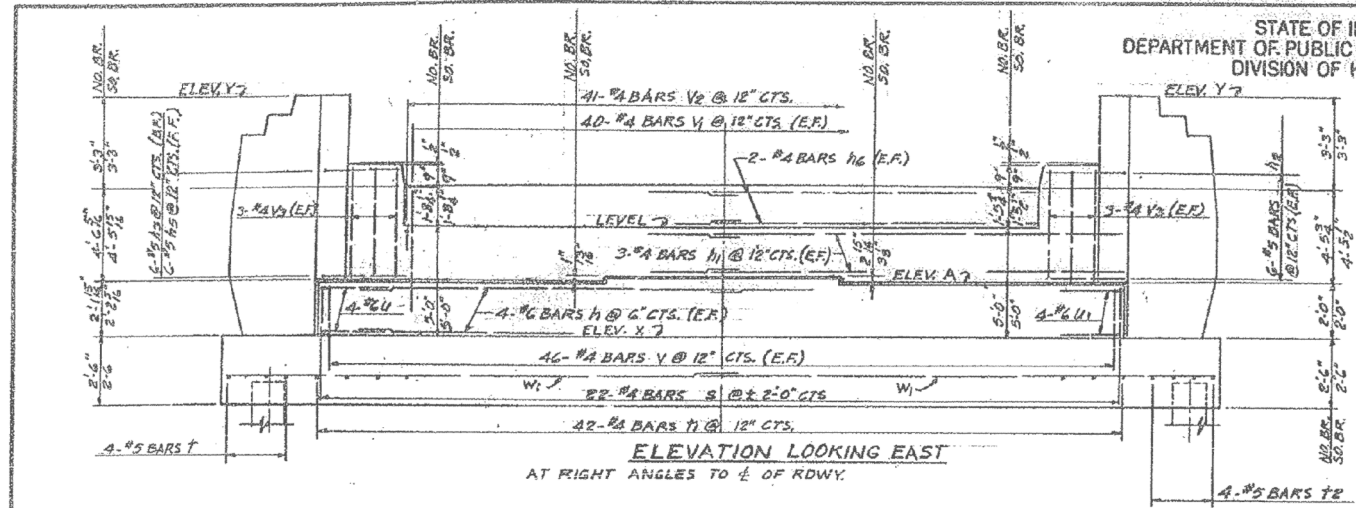
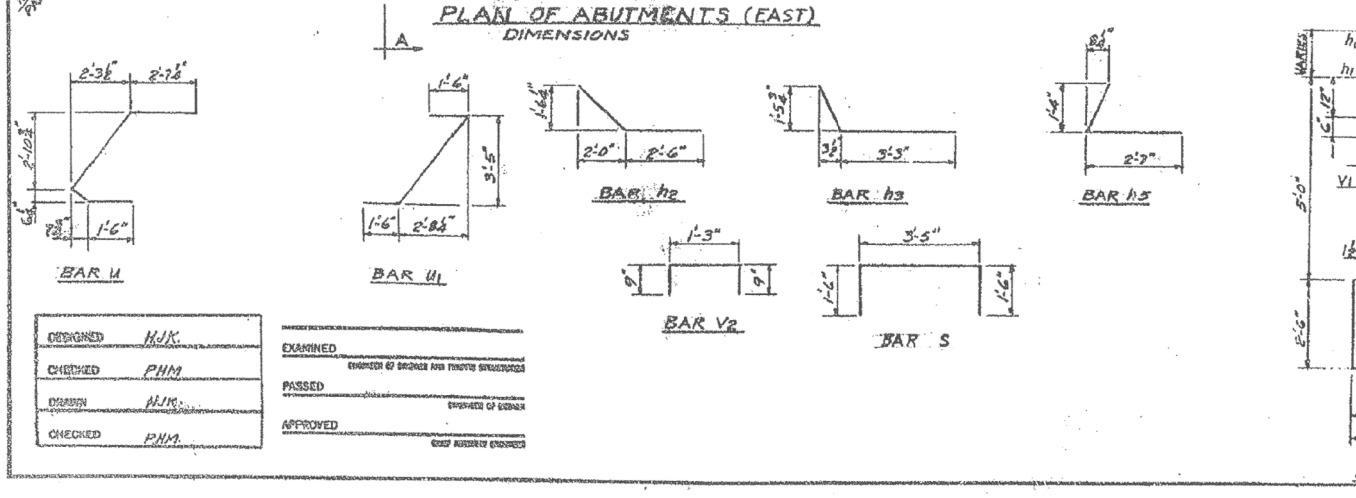


STATE OF ILLINOIS
DEPARTMENT OF PUBLIC WORKS & BUILDINGS
DIVISION OF HIGHWAYS

ROUTE NO.	SEC.	COUNTY	SHEET NO.	SHEET NO.
F.A.I. RT. 74	90-14	TAZEWELL	24	9
FED. ROAD DIST. NO. 7			PROJECT	



PILE DATA
CAPACITY - 30 TONS
TYPE - CONCRETE (SEE SH. #14 FOR ALTERNATES)
ESTIMATED LENGTH - 50 FT.
NO. REQ'D - 26 (13 FOR EACH ABUTMENT)
(INCLUDES ONE TEST PILE)



BILL OF REINFORCEMENT (2 ABUTMENTS)

BAR NO.	SIZE	LENGTH	SHAPE	BAR NO.	SIZE	LENGTH	SHAPE
h	32	23'-8"	U	8	26	5'-5"	U
h1	32	22'-5"	U1	9	26	7'-8"	U
h2	24	4'-5"	V	10	24	3'-0"	V
h3	12	4'-9"	V	11	18	4'-0"	V
h4	20	11'-10"	V1	12	18	5'-6"	V
h5	12	14'-1"	V2	13	22	2'-9"	V
h6	16	20'-0"	V3	14	22	5'-0"	V
s	24	6'-5"	V4	15	20	6'-6"	V
t	8	11'-10"	V5	16	22	5'-3"	V
t1	12	4'-5"	V6	17	22	2'-5"	V
t2	8	15'-0"	V7	18	24	28'-8"	V

BILL OF MATERIAL (PARTS)

ITEM	UNIT	QUANTITY
CLASS X CONCRETE	CYLOS.	118.6
REINFORCEMENT BARS	LBS.	3,030
CONCRETE PILES	LF	1250
CONCRETE TEST PILES	EA.	1

SECTION A-A

EAST ABUTMENTS
F.A.I. ROUTE 74 SECTION 90-14 NVB
F.A.I. RT. 74 OVER I.T.R.R. & S.B.I. RT. 121
STATION 588 + 83.40
TAZEWELL COUNTY

WARREN AND VAN PRAAG, INC.
CONSULTING ENGINEERS • DECATUR, ILLINOIS

FOR INFORMATION ONLY



FILE NAME =	USER NAME = mbecker	DESIGNED - MFB	REVISED -
0900169.68620.52.exist3.dgn	PLOT SCALE =	CHECKED - MRB	REVISED -
	PLOT DATE = 7/16/2012	DRAWN - PRT/LLR	REVISED -
		CHECKED - MRB	REVISED -

STATE OF ILLINOIS
DEPARTMENT OF TRANSPORTATION

EXISTING PLANS
STRUCTURE NO. 090-0169
SHEET NO. SC52 OF SC63 SHEETS

F.A.I. RTE.	SECTION	COUNTY	TOTAL SHEETS	SHEET NO.
74	90-14R(14HB-4,14,14HB)BR	TAZEWELL	2433	2028
CONTRACT NO. 68620			ILLINOIS FED. AID PROJECT	

x:\10000s\10056\engineer\ing-documents\phase-1\174overJackson\Final\0900169.68620.52.exist3.dgn 11:21:11 AM 7/16/2012