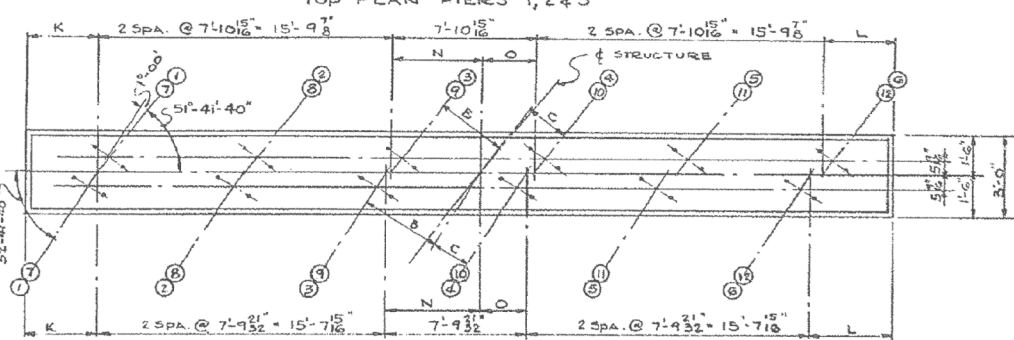
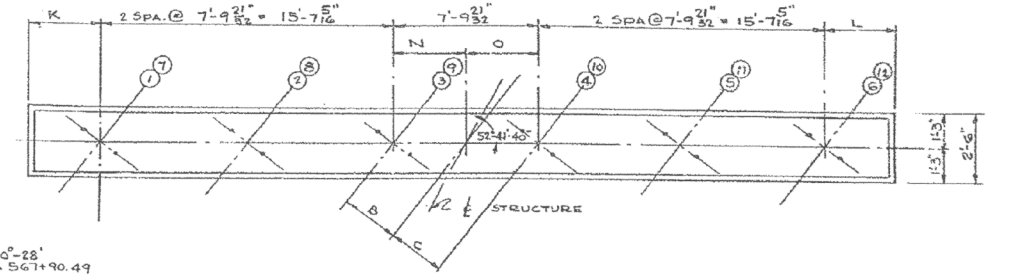
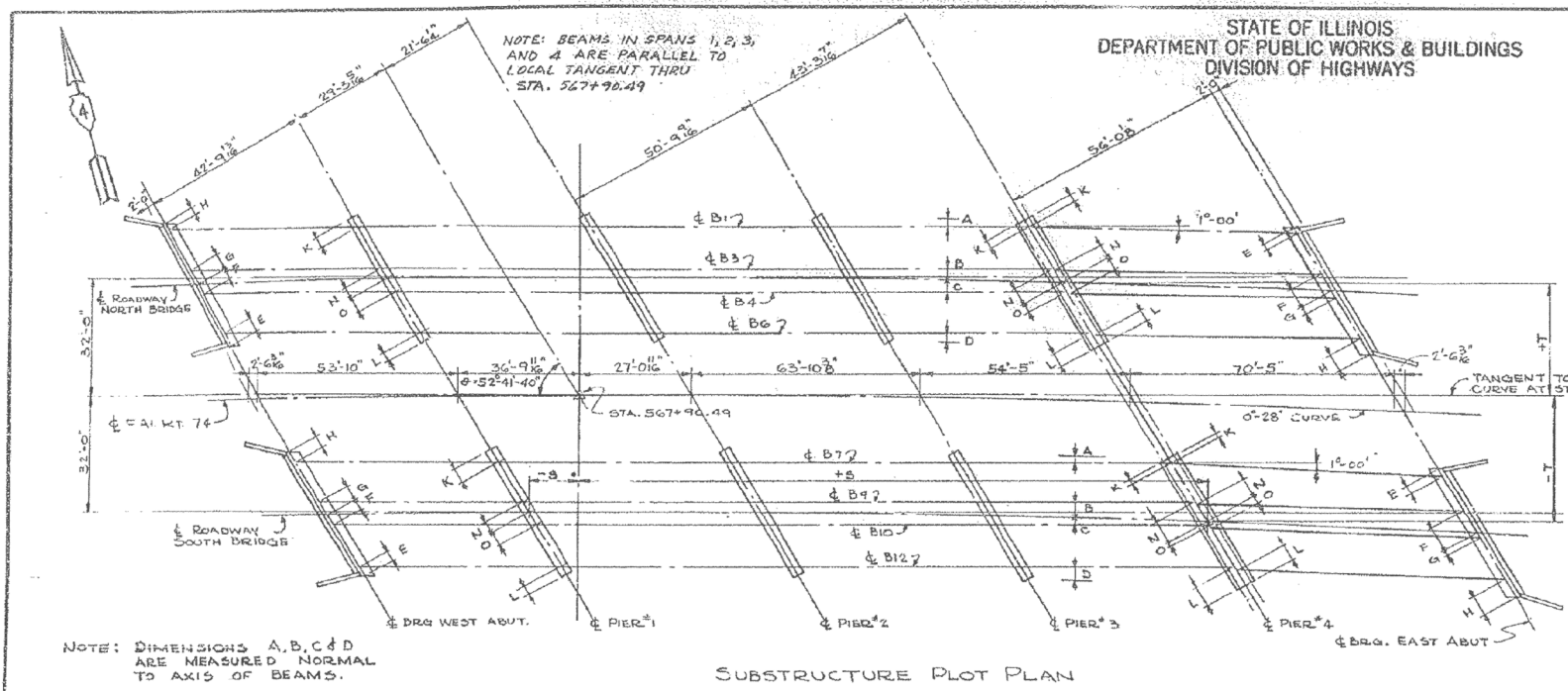


ROUTE No.	SEC.	COUNTY	TOTAL SHEETS	SHEET No.
F.A.I. ROUTE 74	90-14	TAZEWELL	243	10
FED. ROAD DIST. No. 7		ILLINOIS		3

SH 4 OF 15



VARIABLES FOR PIERS

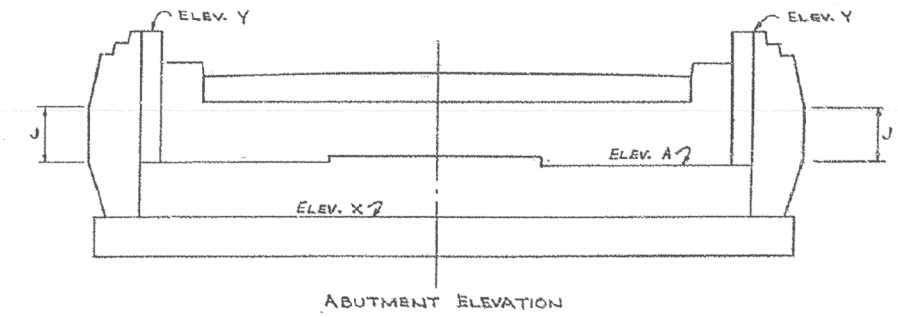
LOCATION	ELEV. P	B	C	K	L	M	N	O	
NORTH BRIDGE	PIER #1	743.39	2'-9 1/2"	3'-5 1/2"	3'-5 1/2"	2'-7 1/2"	12'-1 1/2"	3'-5 3/4"	4'-3 3/4"
	PIER #2	743.20	2'-7 1/2"	3'-7"	3'-8 1/2"	2'-6 5/8"	12'-4 1/2"	3'-3 1/4"	4'-6 1/2"
	PIER #3	742.88	2'-9 1/2"	3'-4 1/2"	3'-6 1/2"	2'-10 3/8"	17'-4 5/8"	3'-6 3/4"	4'-3 5/8"
SPAN 4	742.71	3'-2 1/2"	2'-11 1/2"	3'-1 1/2"	3'-5 3/8"	17'-2 1/2"	4'-0 5/8"	3'-9 1/2"	
		3'-0 5/8"	3'-2 3/8"		2'-11"		3'-10 1/8"	4'-0 5/8"	
SOUTH BRIDGE	PIER #1	743.20	2'-7 1/2"	3'-6 1/2"	3'-8 1/2"	2'-6 5/8"	12'-4 1/2"	3'-3 1/4"	4'-5 3/4"
	PIER #2	743.00	2'-8 1/2"	3'-5 1/2"	3'-7 3/4"	2'-8 1/2"	12'-2 1/2"	3'-5 3/4"	4'-4 1/2"
	PIER #3	742.66	3'-2 1/2"	3'-0 1/2"	3'-2 1/2"	3'-4 1/2"	17'-1 1/2"	3'-11 3/4"	3'-9 1/2"
SPAN 4	742.42	3'-9 3/8"	2'-4 3/4"	2'-5 1/2"	4'-3 1/2"	16'-11 1/2"	4'-9 17/32"	3'-0 8/16"	
		3'-7 3/8"	2'-7 3/8"		3'-8 3/4"		4'-6 15/16"	3'-4"	

COORDINATES FOR SUBSTRUCTURE LAYOUT

LOCATION	S	T
DRG. WEST ABUT.	-114.61	+31.47
PIER #1	-61.67	+31.85
PIER #2	+2.68	+32.00
PIER #3	+66.68	+31.82
PIER #4	+121.41	+31.40
DRG. EAST ABUT.	+192.52	+30.49
DRG. WEST ABUT.	-66.12	-32.18
PIER #1	-12.41	-32.01
PIER #2	+51.52	-32.11
PIER #3	+115.72	-32.55
PIER #4	+170.63	-32.19
DRG. EAST ABUT.	+241.96	-30.39

VARIABLES FOR ABUTMENTS

LOCATION	ELEV. A'	ELEVATION 'Y'	ELEV. X'	E	F	G	H	J
NORTH BRIDGE WEST ABUT.	743.70	NORTH WING 751.54	741.70	3'-0 1/2"	3'-10"	3'-11 3/32"	2'-10 1/6"	2'-6 8/16"
		SOUTH " 751.43		2'-4 3/8"				
NORTH BRIDGE EAST "	742.24	NORTH " 750.18	740.24	3'-7 3/8"	3'-5"	4'-5 15/16"	2'-7 1/6"	2'-7 3/8"
		SOUTH " 749.97		2'-4 3/8"				
SOUTH BRIDGE WEST "	743.51	NORTH " 751.35	741.51	2'-7 3/8"	4'-3 3/32"	3'-6 5/16"	3'-4 1/6"	2'-6 8/16"
		SOUTH " 751.24		2'-4 3/8"				
SOUTH BRIDGE EAST "	741.87	NORTH " 749.81	739.87	2'-7 1/4"	4'-6 1/2"	3'-4 1/16"	3'-9 1/16"	2'-7 3/8"
		SOUTH " 749.58		2'-4 1/2"				



DESIGNED	P. H. M.	EXAMINED	
CHECKED	W. B. S.	ENGINEER OF BRIDGES AND TOWNSHIP STRUCTURES	
DRAWN	P. H. M.	PASSED	ENGINEER OF DESIGN
CHECKED	W. B. S.	APPROVED	CHIEF HIGHWAY ENGINEER

SUBSTRUCTURE LAYOUT & DETAILS
F.A.I. ROUTE 74 SECTION 90-14 HVB

F.A.I. ROUTE 74 OVER I.T.R.R. & S.B.I. ROUTE 121
STATION 568+65.40
TAZEWELL COUNTY

WARREN AND VAN PRAAG, INC.
CONSULTING ENGINEERS - DECATUR, ILLINOIS

FOR INFORMATION ONLY

FILE NAME =	USER NAME = mbecker	DESIGNED - MFB	REVISED -
		CHECKED - MRB	REVISED -
		DRAWN - PRT/LLR	REVISED -
		CHECKED - MRB	REVISED -
PLOT SCALE =			
PLOT DATE = 7/16/2012			

F.A.I. RTE.	SECTION	COUNTY	TOTAL SHEETS	SHEET NO.
74	90-14R(14HB-4,14,14HB)BR	TAZEWELL	2433	2029
			CONTRACT NO.	68620
ILLINOIS FED. AID PROJECT				

11:21:25 AM x:\10000s\10056\engineer\ing-documents\phase-1\174overJackson\Final\0900169_68620_53_exist4.dgn 7/16/2012