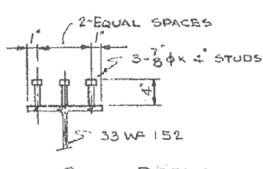
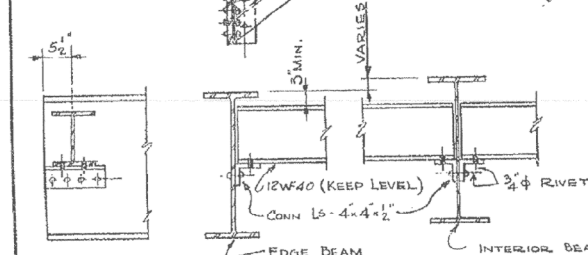
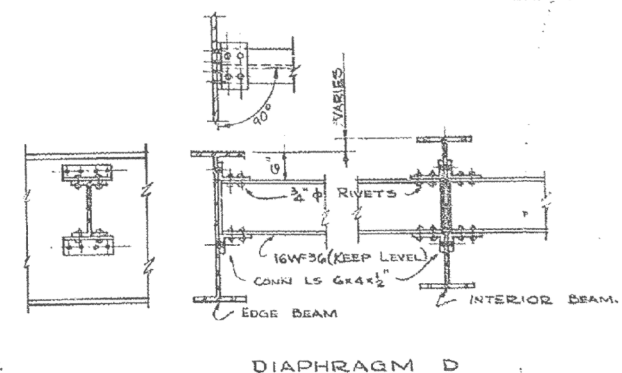
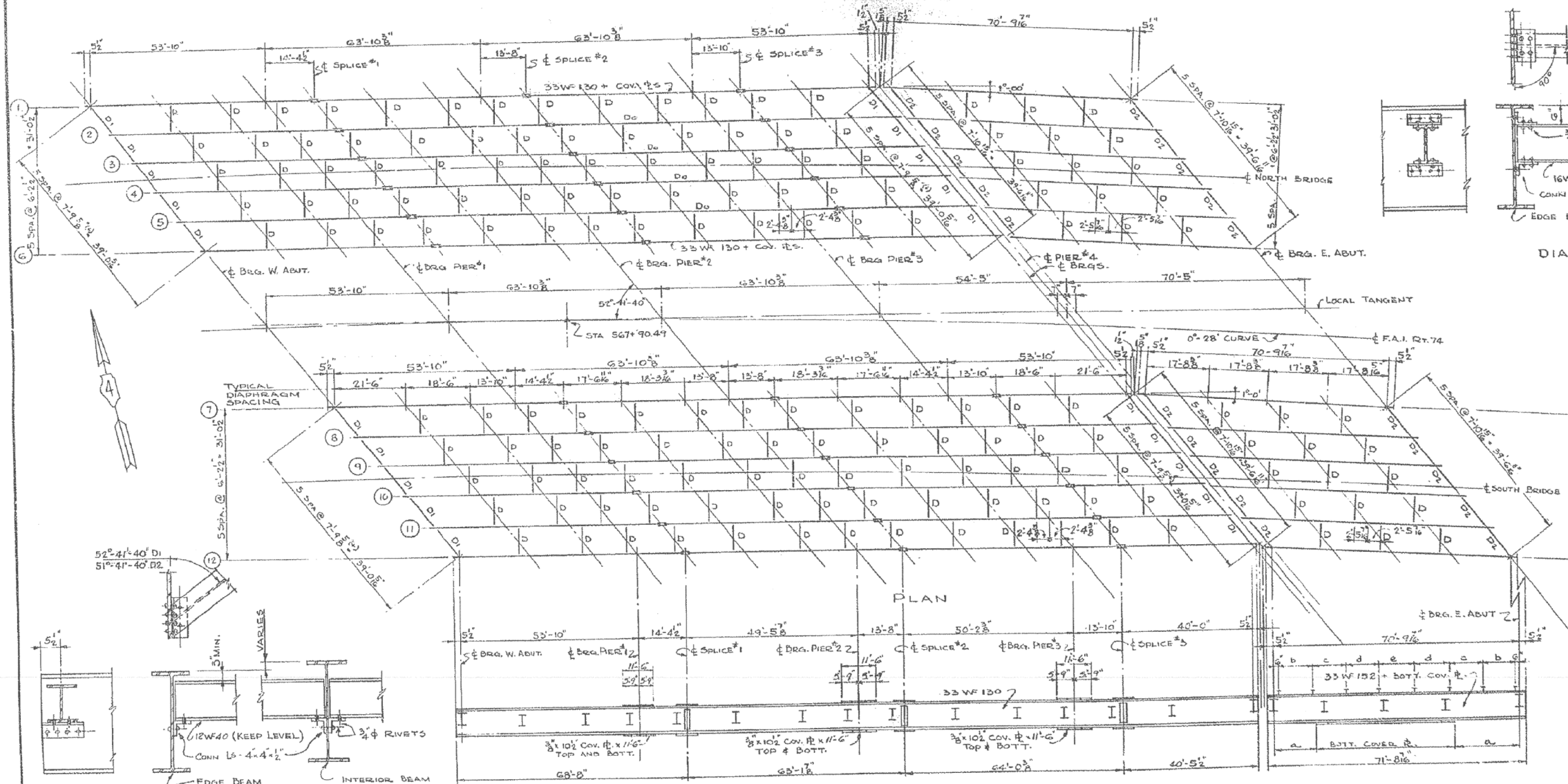


STATE OF ILLINOIS
DEPARTMENT OF PUBLIC WORKS & BUILDINGS
DIVISION OF HIGHWAYS

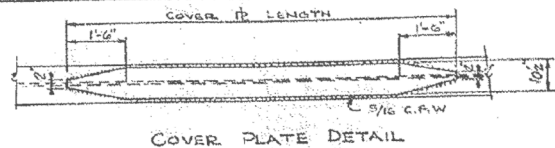
ROUTE No.	SEC.	COUNTY	TOTAL SHEETS	SHEET No.
F.A.I. RT. 74	90-14HB	TAZEWELL	24	16
FED. ROAD DIST. No. 1	ILLINOIS	PROJECT		

SH. 10 OF 15



COMPOSITE BEAM DATA (SPAN #5)

BEAM No.	SIZE	BOTTOM COVER PLATE	SHEAR STUD SPACING				
			a	b	c	e	
1, 6, 7 & 12	33WF 152	10 1/2 x 16 x 53-11 3/8	8'-4 3/4"	17 5/8" @ 7'-10 7/8"	12 5/8" @ 10'-10 1/2"	9 5/8" @ 1'-9 1/4"	6 5/8" @ 1'-6 1/2"
2-5 & 8-11	33WF 152	10 1/2 x 16 x 52'-6 5/8"	9'-1 1/2"	17 5/8" @ 7'-10 7/8"	12 5/8" @ 10'-10 1/2"	9 5/8" @ 1'-9 1/4"	6 5/8" @ 1'-6 1/2"



DESIGNED	P. H. M.	EXAMINED	
CHECKED	W. B. S.	ENGINEER OF BRIDGES AND TRAFFIC STRUCTURES	
DRAWN	P. H. M.	PASSED	
CHECKED	W. B. S.	CHIEF OF DESIGN	
		APPROVED	
		CHIEF HIGHWAY ENGINEER	

**SUPERSTRUCTURE
STRUCTURAL STEEL**
F.A.I. ROUTE 74 SECTION 90-14 HB

F.A.I. ROUTE 74 OVER I.T. R.R. & S.R.I. ROUTE 121
STATION 588 + 55.40
TAZEWELL COUNTY

WARREN AND VAN PRAAG, INC.
CONSULTING ENGINEERS - DECATUR, ILLINOIS

FOR INFORMATION ONLY

benesch
engineers · scientists · planners
Alfred Benesch & Company
205 North Michigan Avenue, Suite 2400
Chicago, Illinois 60601
312-565-0450 Job No. 10056

FILE NAME =	USER NAME = mbecker	DESIGNED - MFB	REVISED -
0900169.68620.59.exist10.dgn		CHECKED - MRB	REVISED -
		DRAWN - PRT/LLR	REVISED -
		CHECKED - MRB	REVISED -

STATE OF ILLINOIS
DEPARTMENT OF TRANSPORTATION

EXISTING PLANS
STRUCTURE NO. 090-0169
SHEET NO. SC59 OF SC63 SHEETS

F.A.I. RTE.	SECTION	COUNTY	TOTAL SHEETS	SHEET NO.
74	90-14R(14HB-4,14,14HB)BR	TAZEWELL	2433	2035
			CONTRACT NO. 68620	
ILLINOIS FED. AID PROJECT				

x:\10000s\10056\engineer\ing.\documents\phase-1\174overJackson\Final\0900169.68620.59.exist10.dgn 11:22:47 AM 7/16/2012