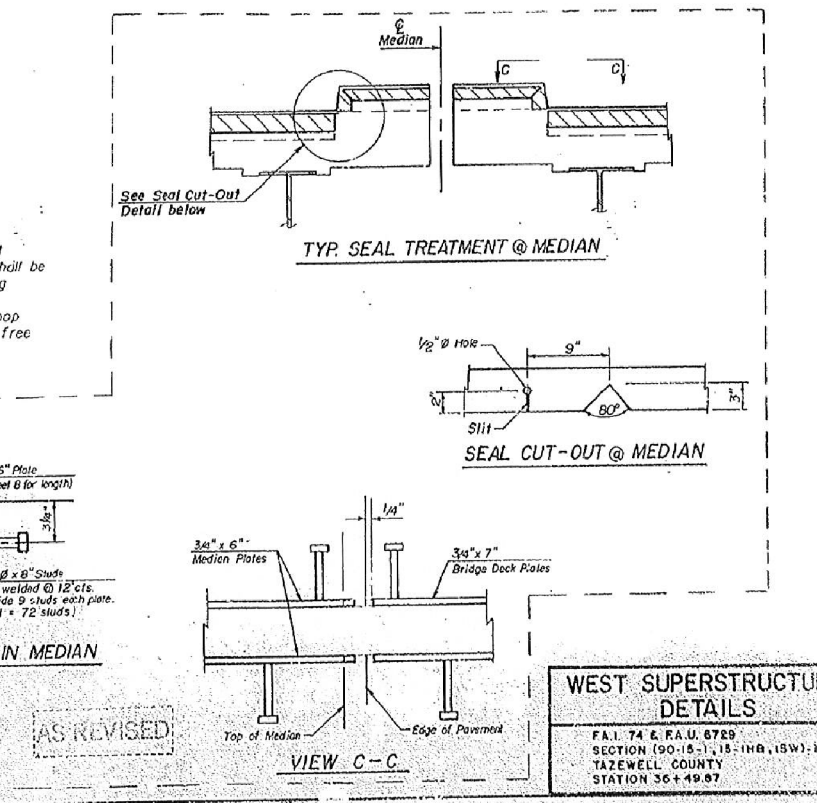
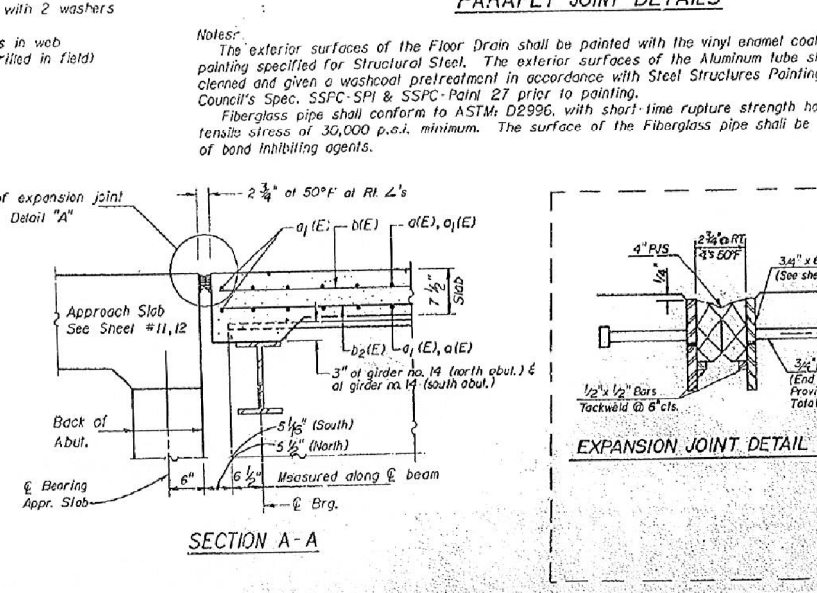
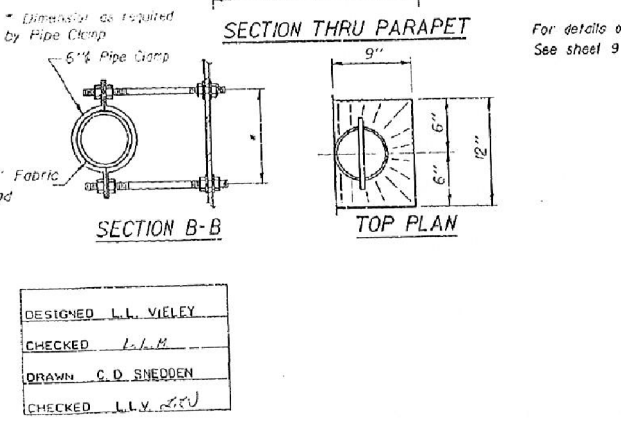
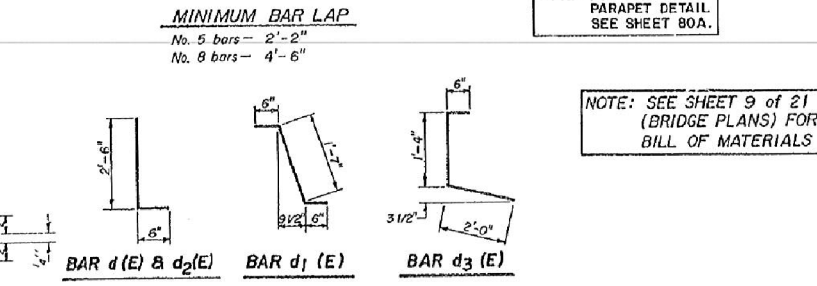
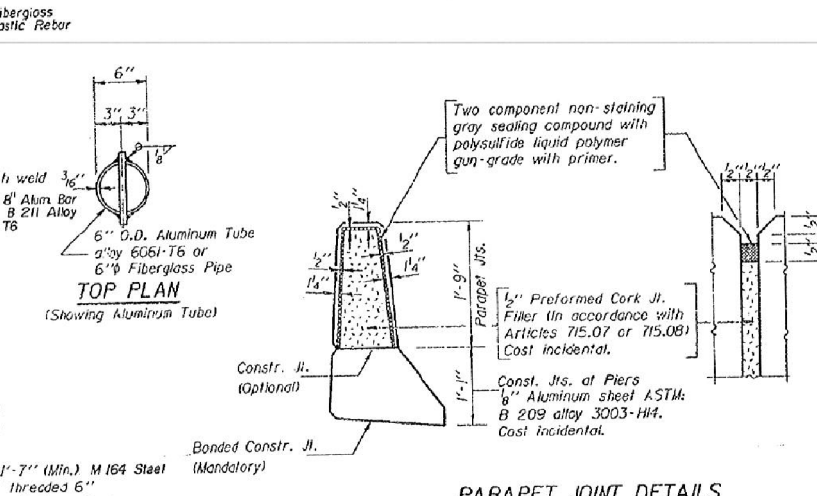
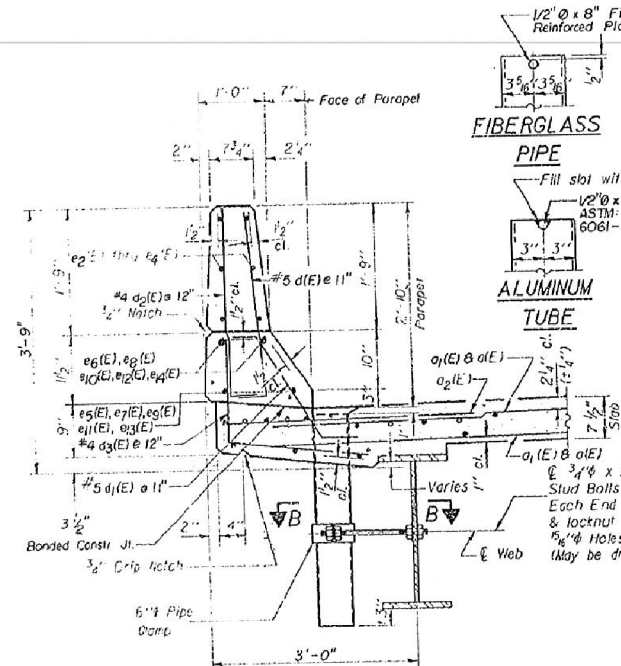
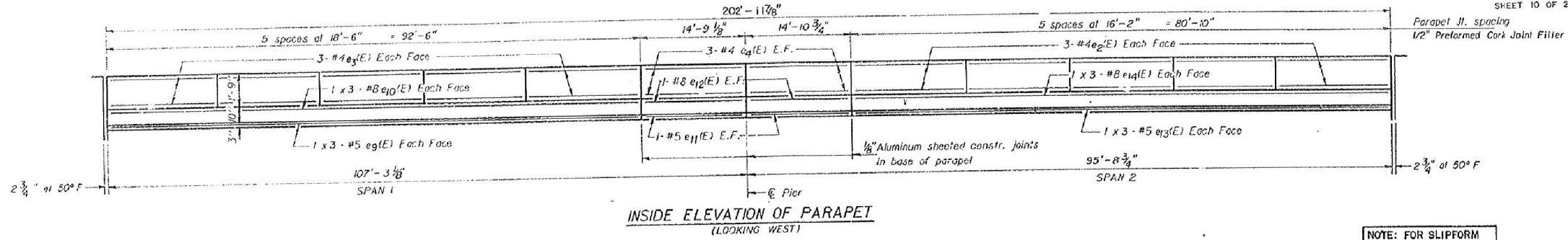


STATE OF ILLINOIS
DEPARTMENT OF TRANSPORTATION

RTE.	SECTION	COUNTY	TOTAL SHEETS	SHEET NO.
FAI 74	*	TAZEWELL	230	140
STA.	TO STA.			
ILL. REG. NO.	ILLINOIS			
X (90-15-1, 15-1 HB, 15W)-1				
SHEET 10 OF 22				



DESIGNED L.L. VIELEY
CHECKED L.L.H.
DRAWN C.D. SNEDDEN
CHECKED L.L.V.
S-2-D 7-1-91

R.A.N. CONSULTANTS INC.

FAI 74 (I-74) / FAU 6729 (MORTON AVE.)

WEST SUPERSTRUCTURE
DETAILS
FAI 74 & FAU 6729
SECTION (90-15-1, 15-1 HB, 15W)-1
TAZEWELL COUNTY
STATION 36+49.87
revised 1/27/08 NJS

FOR INFORMATION ONLY

benesch
engineers · scientists · planners
Alfred Benesch & Company
205 North Michigan Avenue, Suite 2400
Chicago, Illinois 60601
312-565-0450 Job No. 10056

FILE NAME = 0900141.68620.22.exist8.dgn	USER NAME = mbecker	DESIGNED - JDC	REVISIONS -
		CHECKED - MRB	REVISIONS -
		DRAWN - PRT	REVISIONS -
		CHECKED - MRB	REVISIONS -
			REVISIONS -

STATE OF ILLINOIS
DEPARTMENT OF TRANSPORTATION

EXISTING PLANS
STRUCTURE NO. 090-0141
SHEET NO. SD22 OF SD29 SHEETS

F.A.I. RTE.	SECTION	COUNTY	TOTAL SHEETS	SHEET NO.
74	90-14R(14HB-4,14,14HB)/BR	TAZEWELL	2433	2061
CONTRACT NO. 68620				
ILLINOIS FED. AID PROJECT				

X:\100005\10056\Engineering\Documents\Phase I\ MortonOver\74\Final\0900141.68620.22.exist8.dgn 7:37:47 AM 7/16/2012