

RTE.	SECTION	COUNTY	TOTAL SHEETS	SHEET NO.
FAI 74	*	TAZEWELL	200	93
STA.	TO STA.			
F.R.S.A. NO.	ILLINOIS			
* 90-15-1, 15-1HB, 15 W1-1				

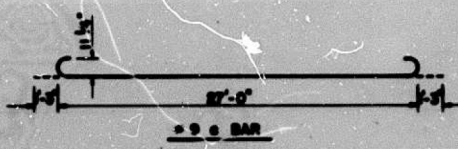


GENERAL NOTES

ALL SPLICES OF REINFORCEMENT BARS SHALL BE 12" FOR #4 BARS, 15" FOR #5 BARS AND 18" FOR #6 BARS. ALL BARS SHALL BE EPOXY COATED. BARS MAY BE CUT IN THE FIELD IN ACCORDANCE WITH ARTICLE 512.04 OF THE STANDARD SPECIFICATIONS. FOR DETAILS AND NOTES SEE STANDARD 2442 AND SHEET 93. THE CLASS X CONCRETE AND REINFORCEMENT BARS FOR THE SLEEPER SLABS WILL BE PAID FOR SEPARATELY.

BILL OF MATERIAL

BAR	NO.	SIZE	LENGTH	SHAPE
a	198	4	25'-6"	
a1	67	4	25'-6"	
b	62	5	35'-9"	
b1	16	4	35'-9"	
b2	419	6	24'-0"	
b3	47	6	15'-3"	
b4	22	4	23'-0"	
b5	19	4	9'-0"	
b6	29	4	15'-2"	
b7	31	5	15'-9"	
b8	62	6	12'-4"	
GRS. APPR. PAV'T. (GR)		SS. YD.	503.5	
PROTECTIVE COAT		SS. YD.	503.5	



BRIDGE APPROACH PAVEMENT SOUTH APPROACH
STA. 34+05 TO STA. 35+16.77

R.A.N. CONSULTANTS, INC.

FAI 74 (I-74) / FAU 6729 (MORTON AVE.)

FOR INFORMATION ONLY

benesch
engineers · scientists · planners

Alfred Benesch & Company
205 North Michigan Avenue, Suite 2400
Chicago, Illinois 60601
312-565-0450 Job No. 10056

FILE NAME = 0900141.68620.28.exist14.dgn

USER NAME = mbecker	DESIGNED - JDC	REVISED -
PLOT SCALE =	CHECKED - MRB	REVISED -
PLOT DATE = 7/16/2012	DRAWN - PRT	REVISED -
	CHECKED - MRB	REVISED -

STATE OF ILLINOIS
DEPARTMENT OF TRANSPORTATION

EXISTING PLANS
STRUCTURE NO. 090-0141
SHEET NO. S028 OF S029 SHEETS

F.A.I. RTE.	SECTION	COUNTY	TOTAL SHEETS	SHEET NO.
74	90-[14R;14HB-4,14,14HV;BR]	TAZEWELL	2433	2067
			CONTRACT NO. 68620	
ILLINOIS FED. AID PROJECT				

X:\100005\10056\Engineer\ng-Document\Phase I\ MortonOver\74\Final\0900141.68620.28.exist14.dgn 7:38:55 AM 7/16/2012