

Bench Mark: Chiseled "□" on S.W. parapet of EB lane I-74 bridge (S.N. 090-0015), just E. of I-155. Elevation 757.24.

Existing Structures: S.N. 090-0014 (WB) and S.N. 090-0015 (EB) were originally built in 1961. Structure consists of dual 3-span continuous steel WF superstructures, skewed 36°59'00". Abutments are reinforced concrete slab abutments supported by concrete piles. The reinforced concrete multi-column piers are supported by creosoted timber piles. The existing total bridge lengths are 173'-10" back to back of abutments. The superstructure width is 35'-8" (WB) and varies from 51'-4 3/4" to 53'-11 1/2" (EB).

The contractor shall remove these bridges and replace with embankment under staged construction. I-74 traffic shall be maintained with two lanes in each direction by utilizing crossovers.

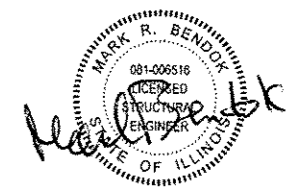
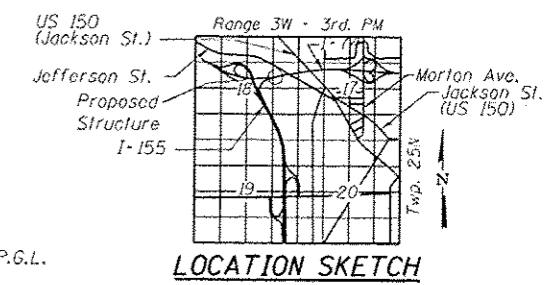
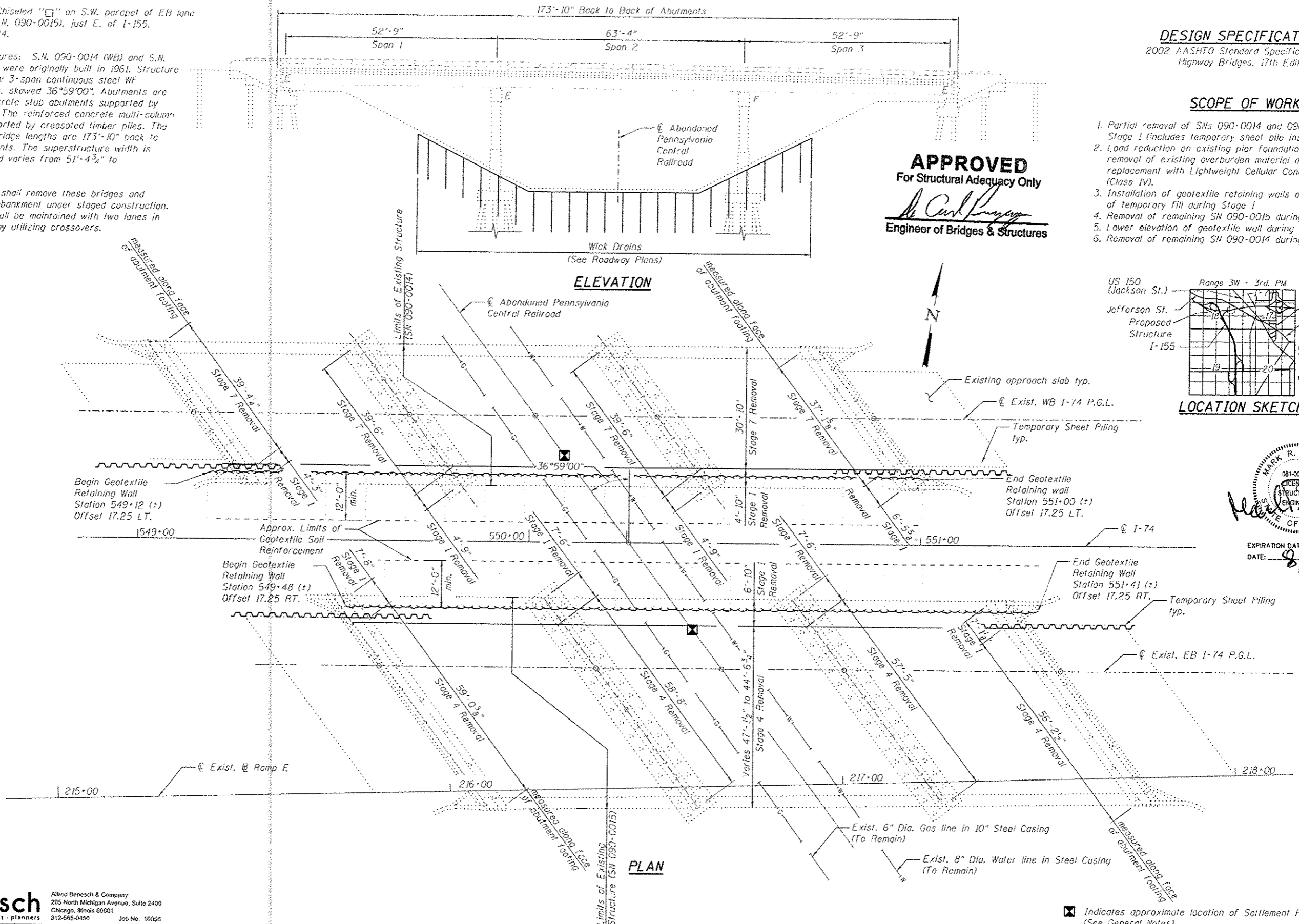
No salvage.

DESIGN SPECIFICATIONS
2002 AASHTO Standard Specifications for Highway Bridges, 17th Edition

SCOPE OF WORK

1. Partial removal of SNs 090-0014 and 090-0015 during Stage 1 (includes temporary sheet pile installation)
2. Load reduction on existing pier foundations through removal of existing overburden material and replacement with Lightweight Cellular Concrete Fill (Class IV).
3. Installation of geotextile retaining walls and placement of temporary fill during Stage 1
4. Removal of remaining SN 090-0015 during Stage 4
5. Lower elevation of geotextile wall during stage 6
6. Removal of remaining SN 090-0014 during Stage 7

APPROVED
For Structural Adequacy Only
Alfred Benesch
Engineer of Bridges & Structures



EXPIRATION DATE 11-30-2012
DATE: 8/17/12

benesch
engineers · scientists · planners
Alfred Benesch & Company
205 North Michigan Avenue, Suite 2400
Chicago, Illinois 60601
312-565-0450 Job No. 10056

FILE NAME : xxxxxx.68620_01.gpd.dgn	USER NAME : mbacker	DESIGNED - MFB/OTS	REVISIONS - -
		CHECKED - MRB	REVISIONS - -
		DRAWN - JLS/OTS	REVISIONS - -
		CHECKED - MRB/KWS	REVISIONS - -

STATE OF ILLINOIS
DEPARTMENT OF TRANSPORTATION

GENERAL PLAN AND ELEVATION
STRUCTURE NO. 090-0014 / 0015 REMOVAL
SHEET NO. SRI OF SR22 SHEETS

F.A.I. RTE.	SECTION	COUNTY	TOTAL SHEETS	SHEET NO.
74	90-114R(14AB-4,14,14HV)IBR	TAZEWELL	2433	2069
CONTRACT NO. 68620			ILLINOIS FED. AID PROJECT	

X:\100005\10056\Engineering\Documents_Phase_1\I74overRR\Final\xxxxxx.68620_01.gpd.dgn 8/17/2012 2:51:17 PM