

STATE OF ILLINOIS
DEPARTMENT OF PUBLIC WORKS & BUILDINGS
DIVISION OF HIGHWAYS

PROJECT NO.	SEC.	TOTAL SHEETS	SHEET NO.
F.A.I. 74	90-0014	19	15
ROUTE NO.	SEC.	COUNTY	TOTAL SHEETS
F.A.I. 74	90-0014	TAZEWELL	89
FED. ROAD DIST. NO.	ILLINOIS	PROJECT NO.	DATE
7	ILLINOIS	74-0014	7/16/2012

GENERAL NOTES

Class "X" Concrete shall be used throughout except as noted.

The Concrete Floor shall be finished in accordance with applicable provisions of Article 51.9 of the Standard Specifications and shall be poured in one continuous operation within limits of construction joints shown.

All curbs and slab outside of longitudinal bonded construction joint shall be poured monolithically.

Rivets 3/4" diameter. Open holes 1/2" diameter unless noted. Field connections riveted unless noted.

All rollers, rockers, bearing plates, lead plates, pintles, and anchor bolts shall be fabricated and set in accordance with Article 51.15 of the Standard Specifications and are included for payment as Furnishing and Erecting Structural Steel.

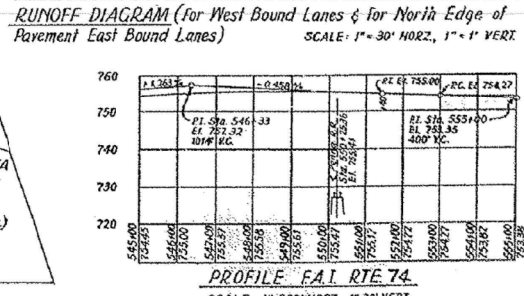
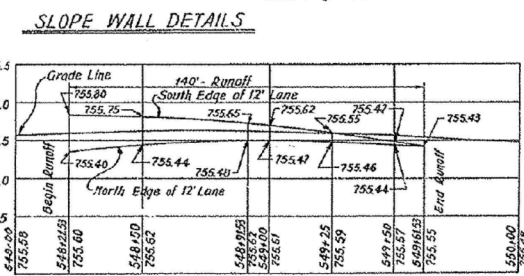
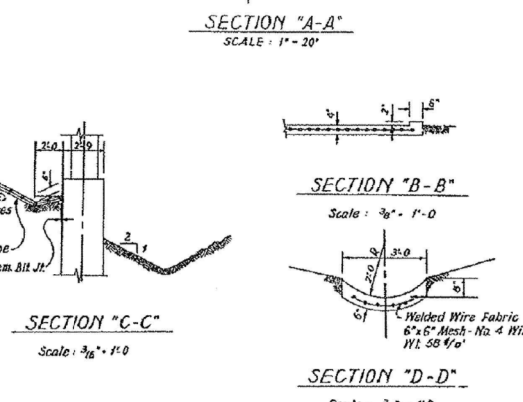
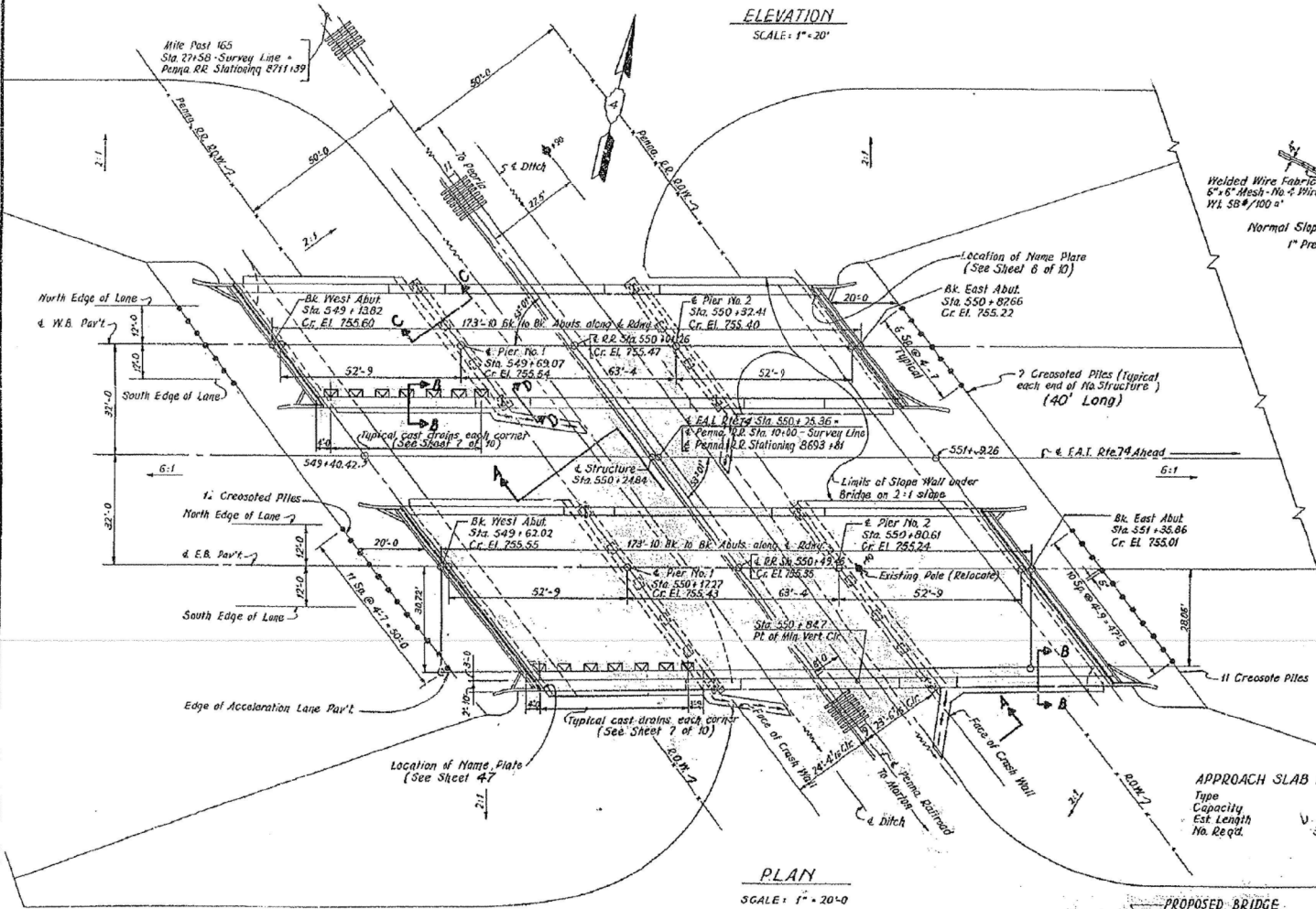
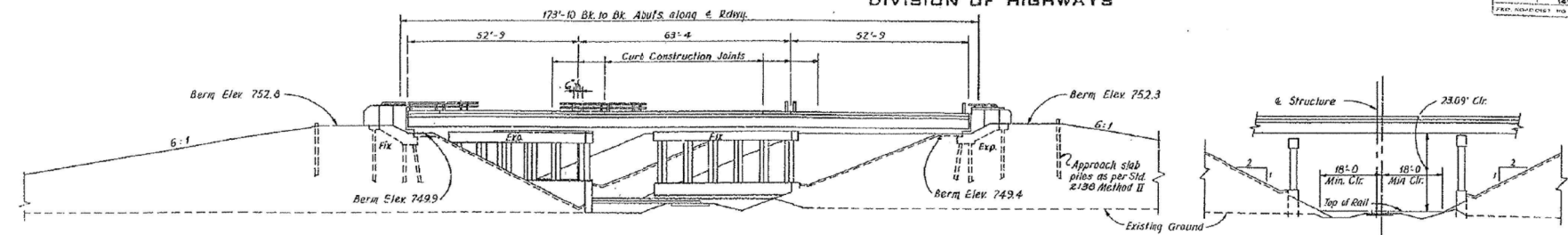
Except as otherwise provided, all Structural Steel shall receive one shop coat of Red lead paint and two field coats of aluminum paint. See Articles 55.1 to 56.5 inclusive of the Standard Specifications. All paint shall be furnished and applied by the Contractor. All Structural Steel shall be inspected by the Illinois Division of Highways before painting.

The Contractor shall drive two test piles in permanent locations as shown on the plans before ordering remainder of piles.

Chamfers shall be provided in accordance with Articles 51.12 and 52.6 of the Standard Specifications.

All reinforcing bar laps shall be a minimum of 20 bar diameters.

Embankment shall be constructed to elevation shown in accordance with Section 16 of the Standard Specifications before abutment and bridge approach piles are driven. All Concrete Piles of Abutments shall be driven in Precored Holes per Article 60.9 (c) of Standard Specifications.



TOTAL BILL OF MATERIALS SEC. 90-14VB

ITEM	SUPER	SUB	TOTAL	
Class "X" Concrete	Cu Yds	577.1	796.0	1,193.1
Reinforcement Bars	Lbs	85,400	58,526	144,926
Erecting Structural Steel	Lbs	446,515		446,516
Furnishing & Erecting Metal Handrail	Lin. Ft.	746		746
Concrete Piles	Lin. Ft.		3315	3315
Crossed Piles (20'-38')	Lin. Ft.		240	240
Crossed Piles (over 38')	Lin. Ft.		8636	8636
Test Piles (Concrete)	Each		1	1
Slope Wall	Sq Yds			1,190
Class "X" Excavation for Struc. Cu Yds			1,264	1,264
Name Plates	Each	2		2
Paved Ditch (3'-0")	Lin. Ft.			41
Test Piles (Timber)	Each		1	1

DESIGNED	R.R.	EXAMINED	
CHECKED	E.L.	ENGINEER OF BRIDGES AND TRAFFIC STRUCTURES	
DRAWN	S.M.	PASSED	
CHECKED	R.R.	APPROVED	ENGINEER OF DESIGN
			CHIEF HIGHWAY ENGINEER

STATION 550+24.84
BUILT 196 BY
STATE OF ILLINOIS
F.A.I. RTE 74 - SEC. 90-14VB
EA. PROJ. 14-74-4 (30)
LOADING H20-S16 & ALT.



DESIGN STRESSES

fc = 1400 psi (Without earth pressure)
fc = 800 psi (With earth pressure)
fs = 20,000 psi (Reinf.)
fs = 18,000 psi (Struct.)
n = 10
Loading - H20-S16-44 and Special Military
v = 75 psi (Pier Footing)

TOTAL BILL OF MATERIAL SEC. 90-14VF

Furnishing Structural Steel	Lbs	446,516
-----------------------------	-----	---------

090-0014 & 090-0015
GENERAL PLAN
F.A.I. ROUTE 74 SECTION 90-14VB
F.A.I. ROUTE 74 OVER PENNA. RAILROAD
STATION 550+24.84
TAZEWELL COUNTY
WARREN AND VAN PRAAG, INC.
CONSULTING ENGINEERS - DECATUR, ILLINOIS

FOR INFORMATION ONLY

benesch
engineers · scientists · planners
Alfred Benesch & Company
205 North Michigan Avenue, Suite 2400
Chicago, Illinois 60601
312-565-0450 Job No. 10056

FILE NAME :	USER NAME :	DESIGNED :	REVISIONS :
xxxxxx.68620.12.exist.dgn	mbecker	MFB	
		MRB	
		MFB	
		MRB	

STATE OF ILLINOIS
DEPARTMENT OF TRANSPORTATION

EXISTING PLANS 1 OF 11
STRUCTURE NO. 090-0014 / 0015 REMOVAL
SHEET NO. SR12 OF SR22 SHEETS

F.A.I. RTE.	SECTION	COUNTY	TOTAL SHEETS	SHEET NO.
74	90-14R(14HB-4,14,14HB)BRJ	TAZEWELL	2433	2080
			CONTRACT NO. 68620	
ILLINOIS FED. AID PROJECT				

X:\100005\100056\Engineering\Documents_Phase I\174overRR\Final\xxxxxx.68620.12.exist.dgn 7/16/2012 7:44:45 AM