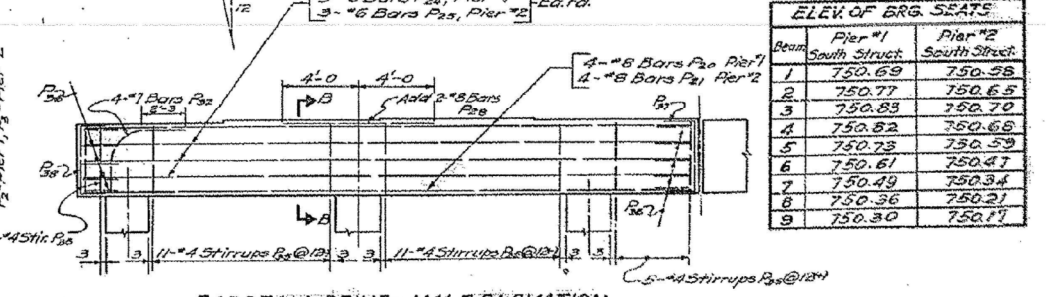
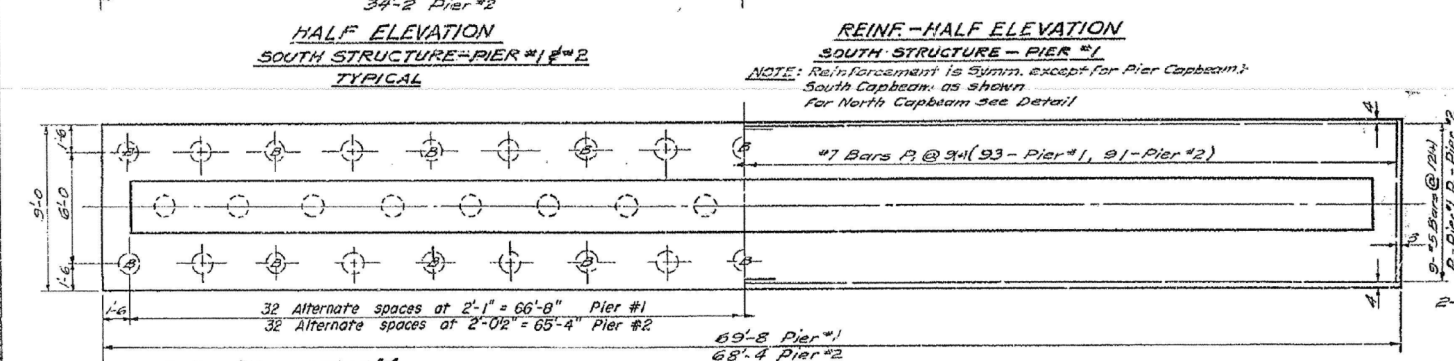
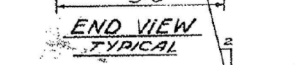
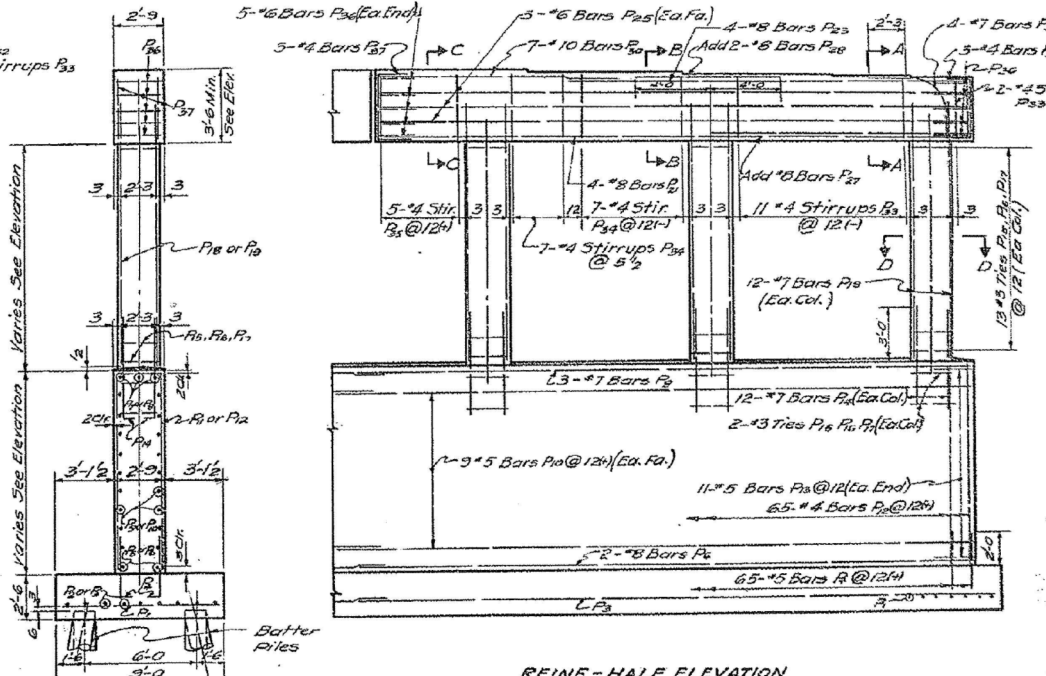
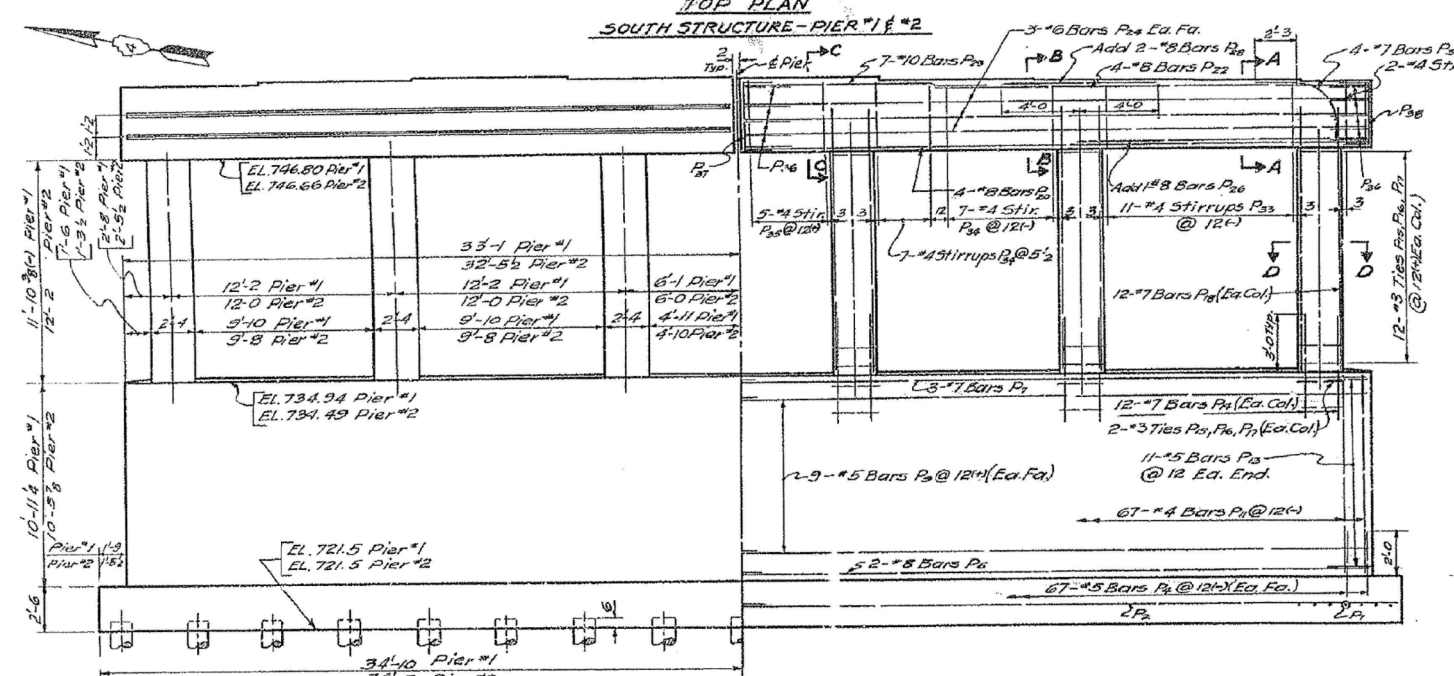
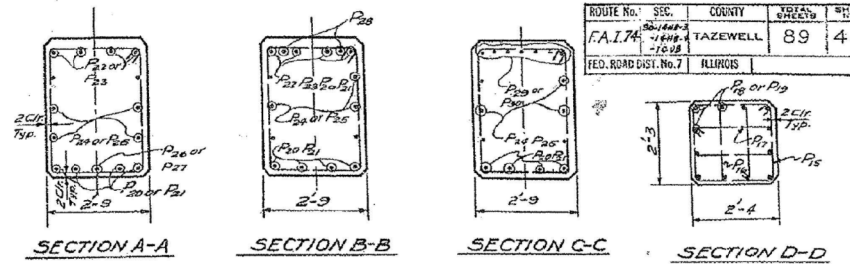
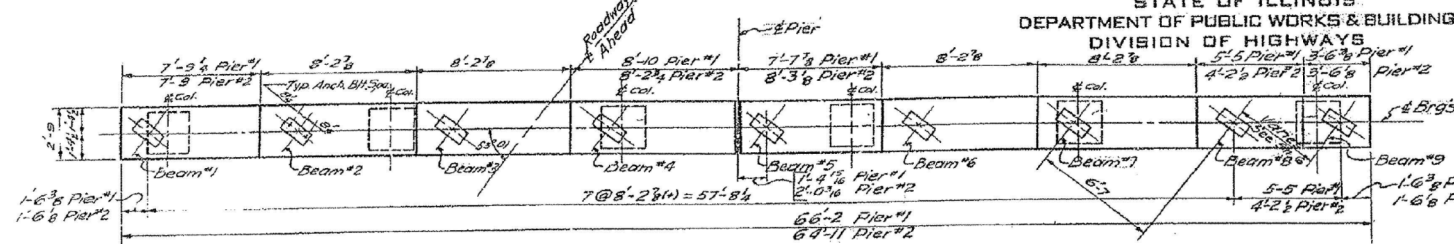


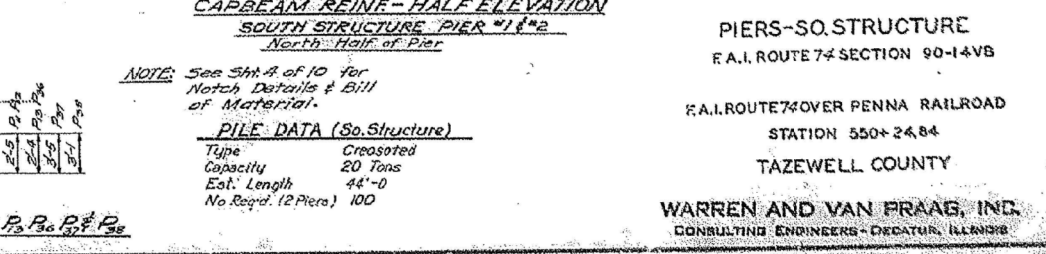
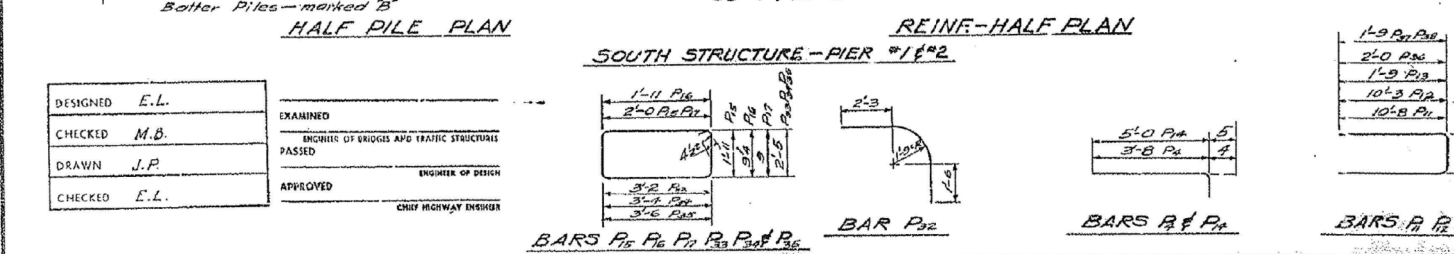
STATE OF ILLINOIS
DEPARTMENT OF PUBLIC WORKS & BUILDINGS
DIVISION OF HIGHWAYS

ROUTE No.	SEC.	COUNTY	SHEET
F.A.I. 74	90-14VB	TAZEWELL	89 44
FED. ROAD DIST. NO. 7	ILLINOIS		

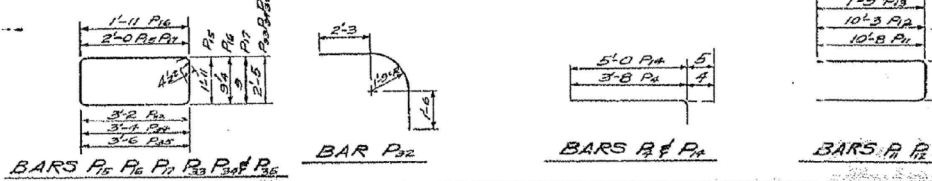


ELEV. OF BRG. SEATS

Beam	Pier #1 South Struct.	Pier #2 South Struct.
1	750.69	750.58
2	750.77	750.65
3	750.83	750.70
4	750.82	750.68
5	750.73	750.59
6	750.61	750.47
7	750.49	750.34
8	750.36	750.21
9	750.30	750.17



DESIGNED	E.L.	EXAMINED	
CHECKED	M.B.	ENGINEER OF BRIDGES AND TRAFFIC STRUCTURES	
DRAWN	J.P.	PASSED	
CHECKED	E.L.	APPROVED	ENGINEER OF DESIGN
			CHIEF HIGHWAY DESIGNER



NOTE: See Sht. A of 10 for Notch Details & Bill of Material.

PILE DATA (So. Structure)

Type	Creosoted
Capacity	20 Tons
Est. Length	44'-0"
No. Req'd. (12 Piers)	100

PIERS-SO. STRUCTURE
F.A.I. ROUTE 74 SECTION 90-14VB
F.A.I. ROUTE 74 OVER PENNA RAILROAD
STATION 550+24.84
TAZEWELL COUNTY
WARREN AND VAN FRAAG, INC.
CONSULTING ENGINEERS - DECATUR, ILLINOIS



FILE NAME :	USER NAME :	DESIGNED :	REVISIONS :
xxxxxx.68620.16.exist5.dgn	mbecker	MFB	
		MRB	
		MFB	
		MRB	

STATE OF ILLINOIS
DEPARTMENT OF TRANSPORTATION

EXISTING PLANS 5 OF 11
STRUCTURE NO. 090-0014 / 0015 REMOVAL
SHEET NO. SR16 OF SR22 SHEETS

FOR INFORMATION ONLY

F.A.I. RTE.	SECTION	COUNTY	TOTAL SHEETS	SHEET NO.
74	90-14R(14HB-4,14,14HB)BR	TAZEWELL	2433	2084
			CONTRACT NO. 68620	
ILLINOIS FED. AID PROJECT				

X:\100005\10056\Engineer\ing-Document\Phase 1\174overRR\Final\xxxxxx.68620.16.exist5.dgn 7:45:39 AM 7/16/2012