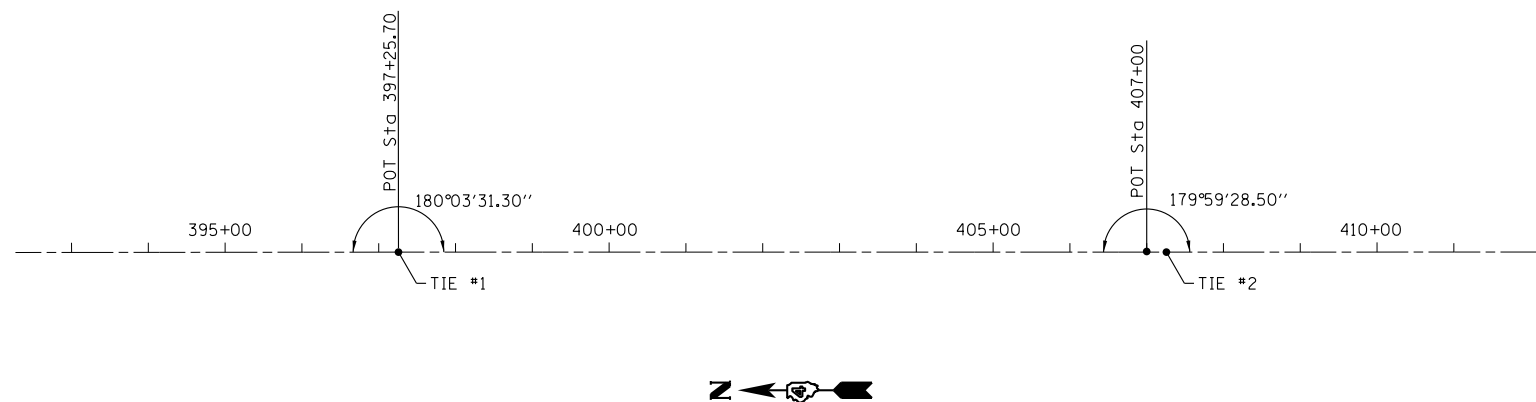


BM#1- 5/8" IRON ROD 11' NORTH & 3' EAST OF THE SOUTH END OF GUARDRAIL IN COMPACTED GRAVEL ON THE EAST SIDE OF IL 41 SOUTH OF THE BRIDGE.  
EL= 626.54

BM#2- CHISELED SQUARE ON THE TOP OF THE SOUTHWEST WING WALL  
EL= 623.25



USER NAME = *USER*	DESIGNED -	REVISED -
	DRAWN -	REVISED -
PLOT SCALE = *SCALE*	CHECKED -	REVISED -
PLOT DATE = *DATE*	DATE -	REVISED -



**Allen Henderson & Associates, Inc.**  
Civil and Structural Engineers Springfield, IL  
62703 Phone: (217)544-8033 IL Design Firm  
No. 184-001907

**ALIGNMENT, TIES & BENCHMARKS**

SCALE: NONE SHEET NO. 1 OF 1 SHEETS STA. TO STA.

F.A.P. RTE.	SECTION	COUNTY	TOTAL SHEETS	SHEET NO.
574	12BR-1	FULTON	62	15
<b>CONTRACT NO. 68732</b>				
FED. ROAD DIST. NO. ILLINOIS FED. AID PROJECT				