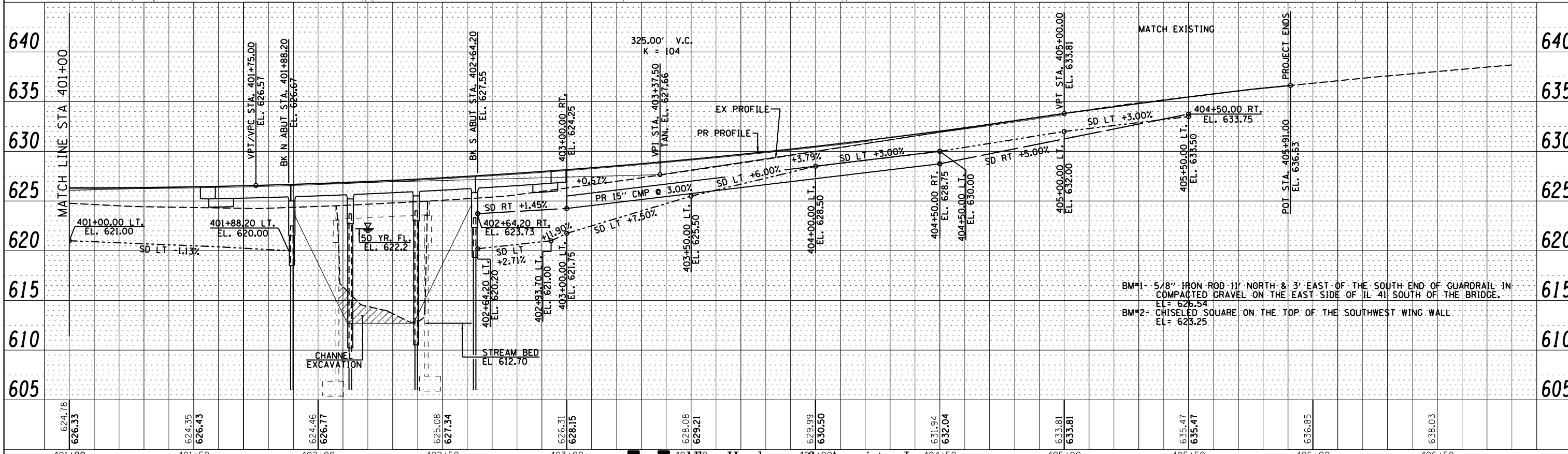
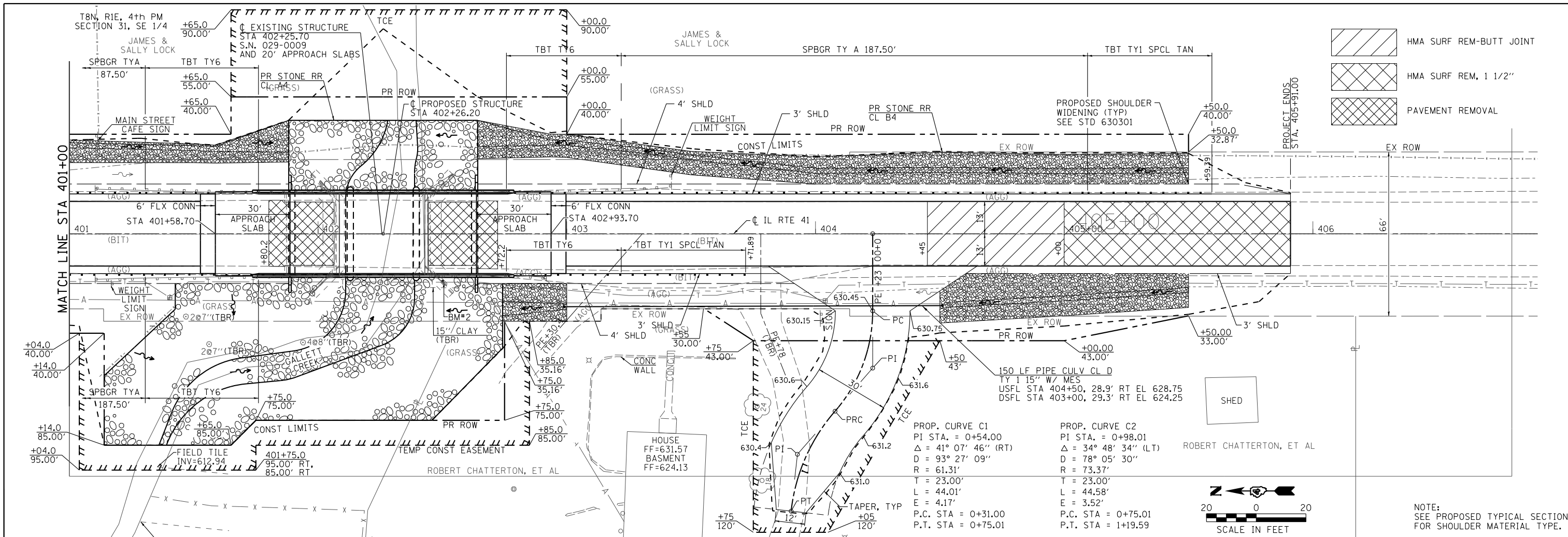
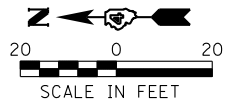


| | | | |
|------|----------------|----|------|
| PLAN | SURVEYED | BY | DATE |
| | PLOTTED | | |
| | CHECKED | | |
| | ALIGNED | | |
| | FILED | | |
| | NO. 029-0009 | | |
| | CADD FILE NAME | | |

| | | | |
|---------|-----------|----|------|
| PROFILE | SURVEYED | BY | DATE |
| | PLOTTED | | |
| | CHECKED | | |
| | GRADES | | |
| | STRUCTURE | | |
| | NOTATIONS | | |
| | CHFD | | |



- HMA SURF REM-BUTT JOINT
- HMA SURF REM, 1 1/2"
- PAVEMENT REMOVAL



NOTE:
SEE PROPOSED TYPICAL SECTION
FOR SHOULDER MATERIAL TYPE.

Allen Henderson & Associates, Inc.
Civil and Structural Engineers Springfield, IL
62703 Phone: (217)544-8033 IL Design Firm
No. 184-001907

PLAN & PROFILE

| | | |
|----------------------|------------|-----------|
| USER NAME : *USER* | DESIGNED - | REVISED - |
| | CHECKED - | REVISED - |
| PLOT SCALE : *SCALE* | DRAWN - | REVISED - |
| PLOT DATE : *DATE* | CHECKED - | REVISED - |

| | | | | |
|---|---------|--------|--------------|-----------|
| F.A.P. RTE. | SECTION | COUNTY | TOTAL SHEETS | SHEET NO. |
| 574 | 12BR-1 | FULTON | 62 | 17 |
| CONTRACT NO. 68732 | | | | |
| FED. ROAD DIST. NO. ILLINOIS FED. AID PROJECT | | | | |