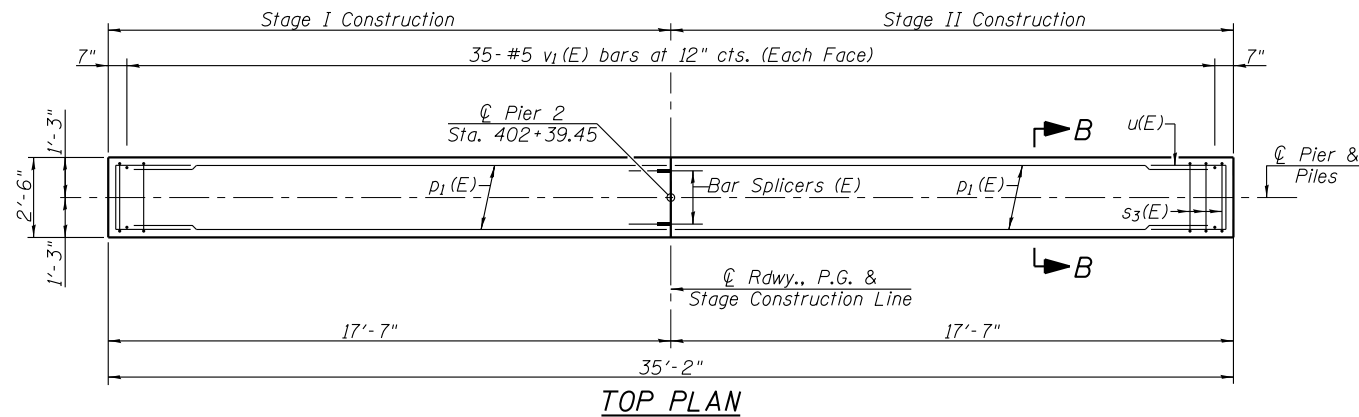
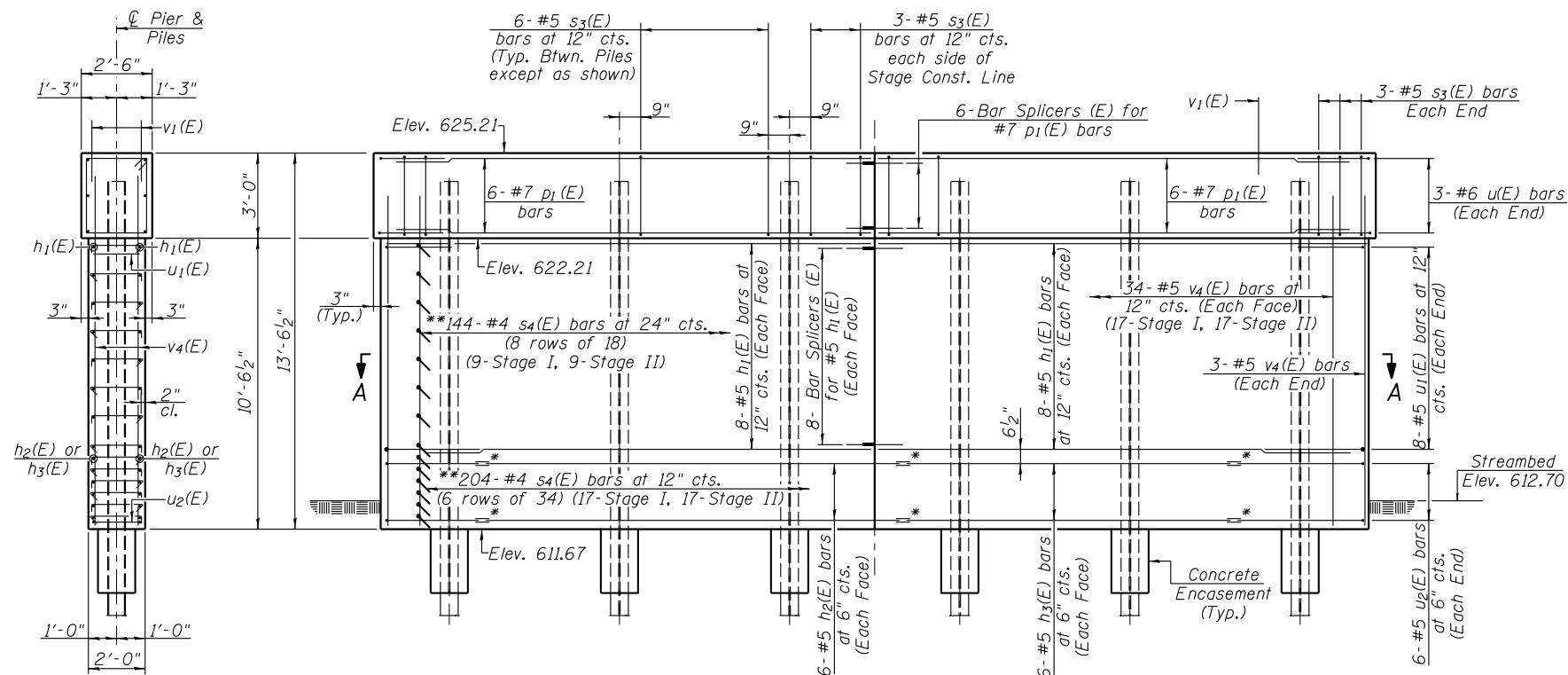


SECTION B-B

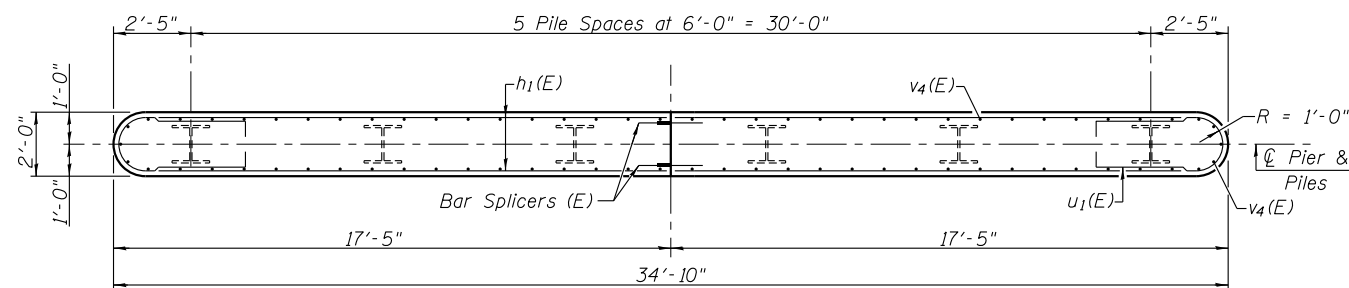


TOP PLAN

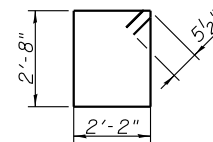


ELEVATION  
(Looking South)

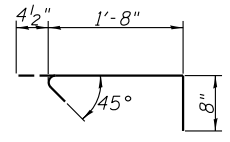
END VIEW



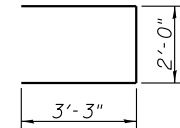
SECTION A-A



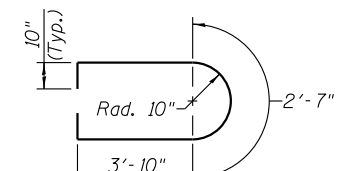
BAR s3(E)



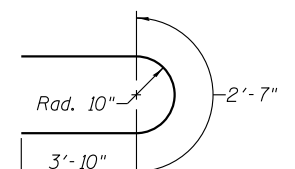
BAR s4(E)



BAR u(E)



BAR u1(E)



BAR u2(E)

BILL OF MATERIAL

Bar	No.	Size	Length	Shape
h1(E)	32	#5	16'-1"	—
h2(E)	12	#5	13'-8"	—
h3(E)	12	#5	11'-6"	—
p1(E)	12	#7	17'-3"	—
s3(E)	36	#5	10'-7"	□
s4(E)	348	#4	2'-9"	└┘
u(E)	6	#6	8'-6"	U
u1(E)	16	#5	11'-11"	U
u2(E)	12	#5	10'-3"	U
v1(E)	70	#5	3'-4"	—
v4(E)	74	#5	12'-6"	—
Cofferdam Excavation Cu. Yd. 8				
Concrete Structures Cu. Yd. 36.6				
Reinforcement Bars, Epoxy Coated Pound 3930				
Furnishing Steel Piles HP10x42 Foot 246				
Driving Piles Foot 246				
Concrete Encasement Cu. Yd. 2.1				
Cofferdam (Type 1) (Location - 2) Each 1				

For details of Bar Splicers, see sheet 17 of 19.  
For details of Piles and Concrete Encasement, see sheet 16 of 19.

PILE DATA

Type: Steel HP 10x42  
Nominal Required Bearing: 335 kips  
Factored Resistance Available: 168 kips  
Est. Length: 41 ft.  
No. Production Piles: 6  
No. Test Piles: 0