

STANDARD BAR SPLICER ASSEMBLY

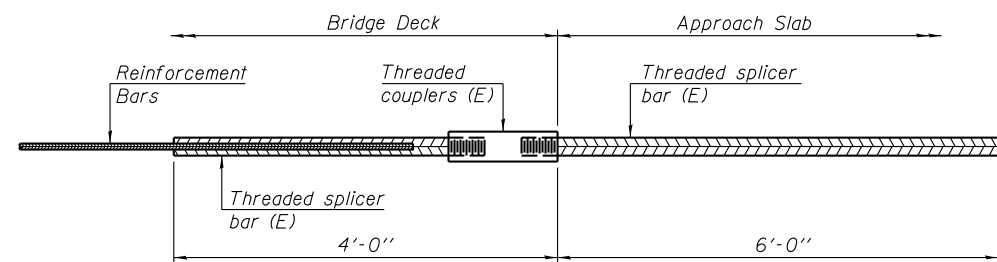
Minimum Lap Lengths					
Bar size to be spliced	Table 1	Table 2	Table 3	Table 4	Table 5
3, 4	1'-5"	1'-11"	2'-1"	2'-4"	2'-3"
5	1'-9"	2'-5"	2'-7"	2'-11"	2'-10"
6	2'-1"	2'-11"	3'-1"	3'-6"	3'-4"
7	2'-9"	3'-10"	4'-2"	4'-8"	4'-6"
8	3'-8"	5'-1"	5'-5"	6'-2"	5'-10"
9	4'-7"	6'-5"	6'-10"	7'-9"	7'-5"

- Table 1: Black bar, 0.8 Class C
- Table 2: Black bar, Top bar lap, 0.8 Class C
- Table 3: Epoxy bar, 0.8 Class C
- Table 4: Epoxy bar, Top bar lap, 0.8 Class C
- Table 5: Epoxy bar, Top bar lap, Class B

Threaded splicer bar length = min. lap length + 1/2" + thread length

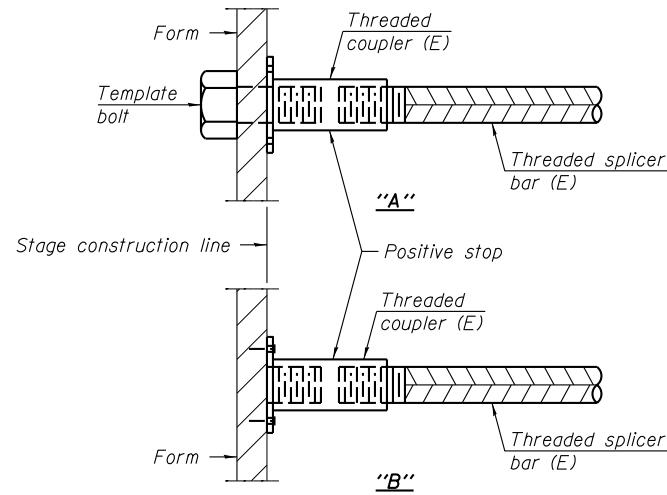
* Epoxy not required on Bar Splicer Assembly components used in conjunction with black bars.

Location	Bar size	No. assemblies required	Table for minimum lap length
N. Appr. Footing	5	40	3
N. Appr. Slab (Top)	4	25	4
N. Appr. Slab (Bottom)	5	46	3
N. Abut. Cap	7	6	4
N. Abut. Haunch	5	3	3
S. Appr. Footing	5	40	3
S. Appr. Slab (Top)	4	25	4
S. Appr. Slab (Bottom)	5	46	3
S. Abut. Cap	7	6	3
S. Abut. Haunch	5	3	3
Pier 1 Haunch	5	2	3
Pier 2 Haunch	5	2	3
Top of Slab	5	51	4
Bottom of Slab	5	75	3
Pier 1 Cap	7	6	4
Pier 2 Cap	7	6	4
Pier 1 Wall	5	16	4
Pier 2 Wall	5	16	4



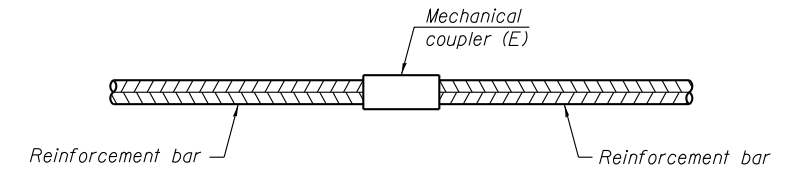
BAR SPLICER ASSEMBLY FOR #5 BAR ON INTEGRAL OR SEMI-INTEGRAL ABUTMENTS

No. required = 0



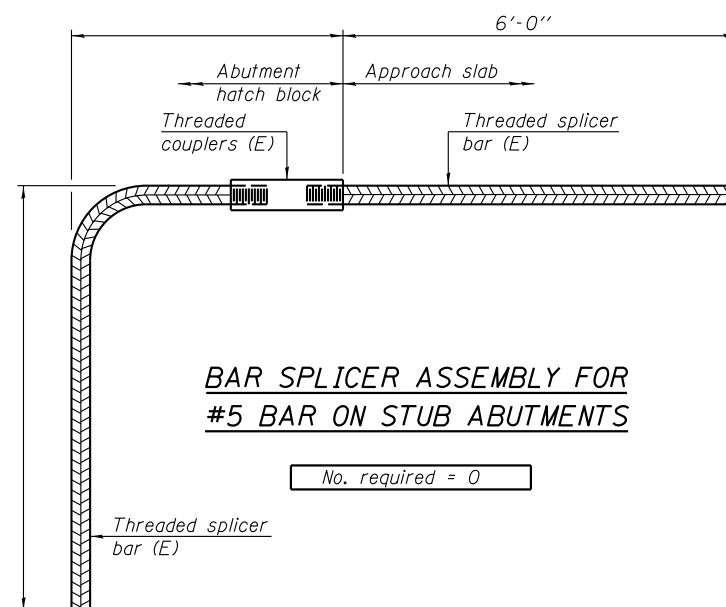
INSTALLATION AND SETTING METHODS

"A" : Set bar splicer assembly by means of a template bolt.
 "B" : Set bar splicer assembly by nailing to wood forms or cementing to steel forms.
 (E) : Indicates epoxy coating.



STANDARD MECHANICAL SPLICER

Location	Bar size	No. assemblies required
Pier 1	#5	30
Pier 2	#5	36



BAR SPLICER ASSEMBLY FOR #5 BAR ON STUB ABUTMENTS

No. required = 0

NOTES

Splicer bars shall be deformed with threaded ends and have a minimum 60 ksi yield strength.
 All reinforcement shall be lapped and tied to the splicer bars.
 Bar splicer assemblies shall be epoxy coated according to the requirements for reinforcement bars. See Section 508 of the Standard Specifications.
 See special provision for Mechanical Splicers.
 See approved list of bar splicer assemblies and mechanical splicers for alternatives.

BSD-1

7-1-10

FILE NAME =	USER NAME =	DESIGNED -	REVISED -		Allen Henderson & Associates, Inc. Civil and Structural Engineers Springfield, IL 62703 Phone: (217)544-8033 IL Design Firm No. 184-001907	BAR SPLICER ASSEMBLY AND MECHANICAL SPLICER DETAILS STRUCTURE NO. 029-0072	F.A.P. RTE.	SECTION	COUNTY	TOTAL SHEETS	SHEET NO.
		CHECKED -	REVISED -				574	12BR-1	FULTON	62	40
PLOT SCALE =	DRAWN -	REVISIED -	REVISIED -				CONTRACT NO. 68732				
PLOT DATE =	CHECKED -	REVISIED -	REVISIED -				ILLINOIS FED. AID PROJECT				