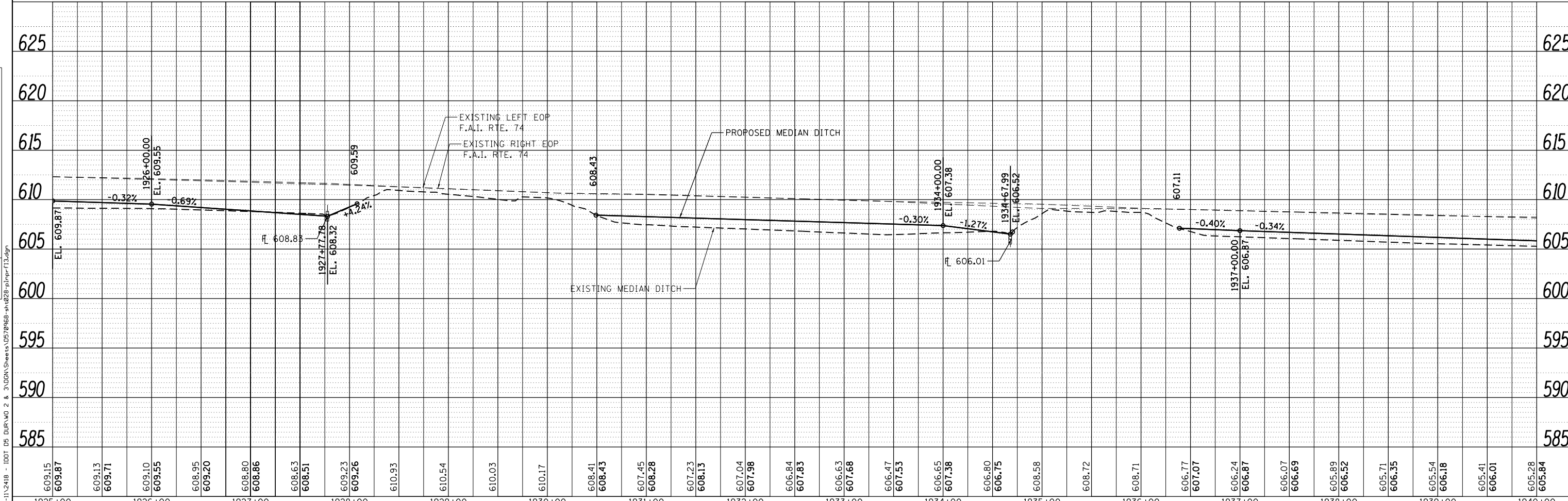
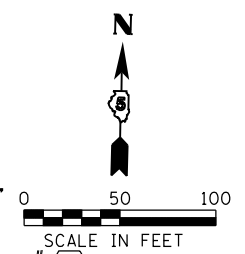
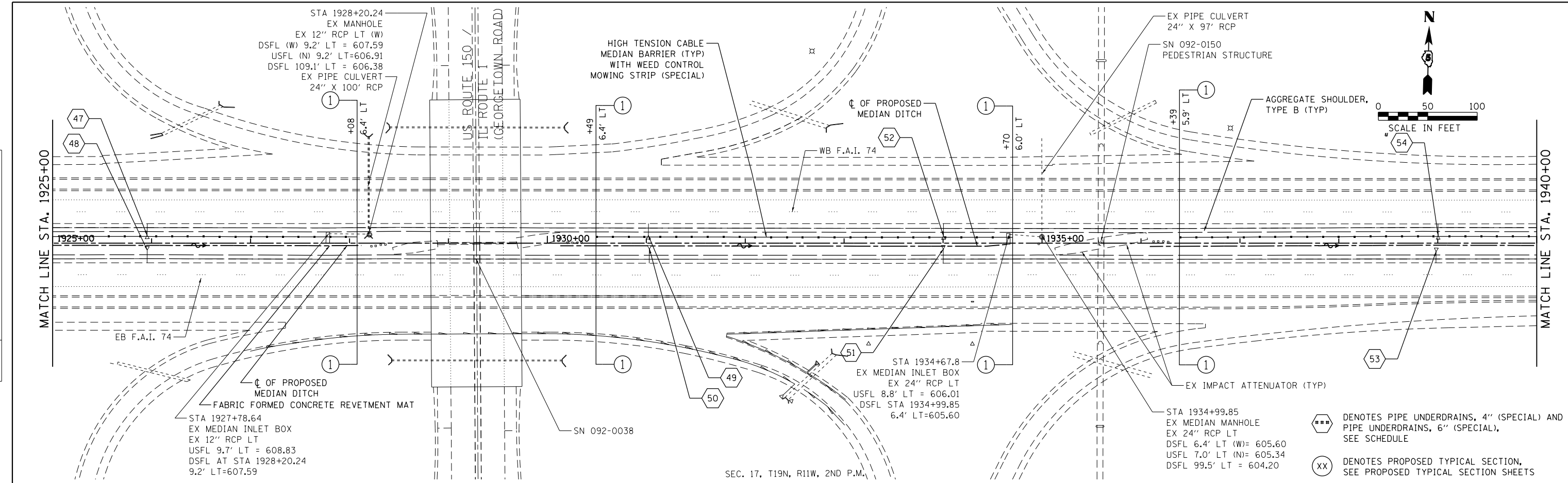


PLAN	SURVEYED	DATE
	PLOTTED	BY
	ALIGNED	
	CHECKED	
	FILED	
	NO.	

INFRASTRUCTURE
ENGINEERING

PROFILE	SURVEYED	DATE
	PLOTTED	BY
	GRADES	
	CHECKED	
	STRUCTURE	
	NO.	



609.15 609.87	609.13 609.71	609.10 609.55	608.95 609.20	608.80 608.86	608.63 608.51	608.23 609.26	610.93	610.54	610.03	610.17	608.41 608.43	607.45 608.28	607.23 608.13	607.04 607.98	606.84 607.83	606.63 607.68	606.47 607.53	606.65 607.38	606.80 606.75	608.58	608.72	608.71	606.77 607.07	606.24 606.87	606.07 606.69	605.89 606.52	605.71 606.35	605.54 606.18	605.41 606.01	605.28 605.84	625	625
1925+00	1926+00	1927+00	1928+00	1929+00	1930+00	1931+00	1932+00	1933+00	1934+00	1935+00	1936+00	1937+00	1938+00	1939+00	1940+00												625					
USER NAME = jcracker																	DESIGNED - DR/LC		REVISED -													
																	DRAWN - MK		REVISED -													
PLOT SCALE = 100.0000' / in.																	CHECKED - RB/KK		REVISED -													
PLOT DATE = 7/31/2012																	DATE - 08/02/2012		REVISED -													
STATE OF ILLINOIS DEPARTMENT OF TRANSPORTATION																	PLAN & PROFILE F.A.I. 74				SCALE: 1"=50'		SHEET 13 OF 33 SHEETS		STA. 1925+00.00 TO STA. 1940+00.00		F.A.I. SECTION COUNTY TOTAL SHEETS SHEET NO.					
																					74		MEDIAN CABLE 2012-3		VERMILION		232		31			
																	CONTRACT NO. 70968				ILLINOIS FED. AID PROJECT											

FILE NAME = P:\P-11\2418 - IDOT 05 DURWO 2 & 3\UGDN\Sheets\0570968-sh-0228-pln-pr-f13.dgn