

STATE OF ILLINOIS
DEPARTMENT OF TRANSPORTATION
DIVISION OF HIGHWAYS
PROPOSED
HIGHWAY PLANS

F.A.I. RTE.	SECTION	COUNTY	TOTAL SHEETS	SHEET NO.
*	D6 Delineators 2011	**	12	1
				ILLINOIS CONTRACT NO. 72D57

*FAI 55 & FAI 155
 **LOGAN & SANGAMON

D-96-188-10



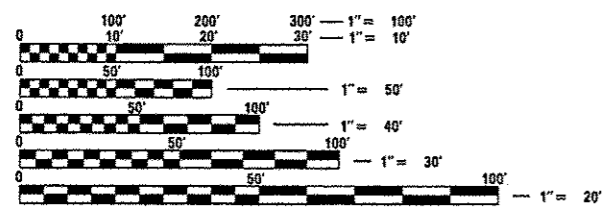
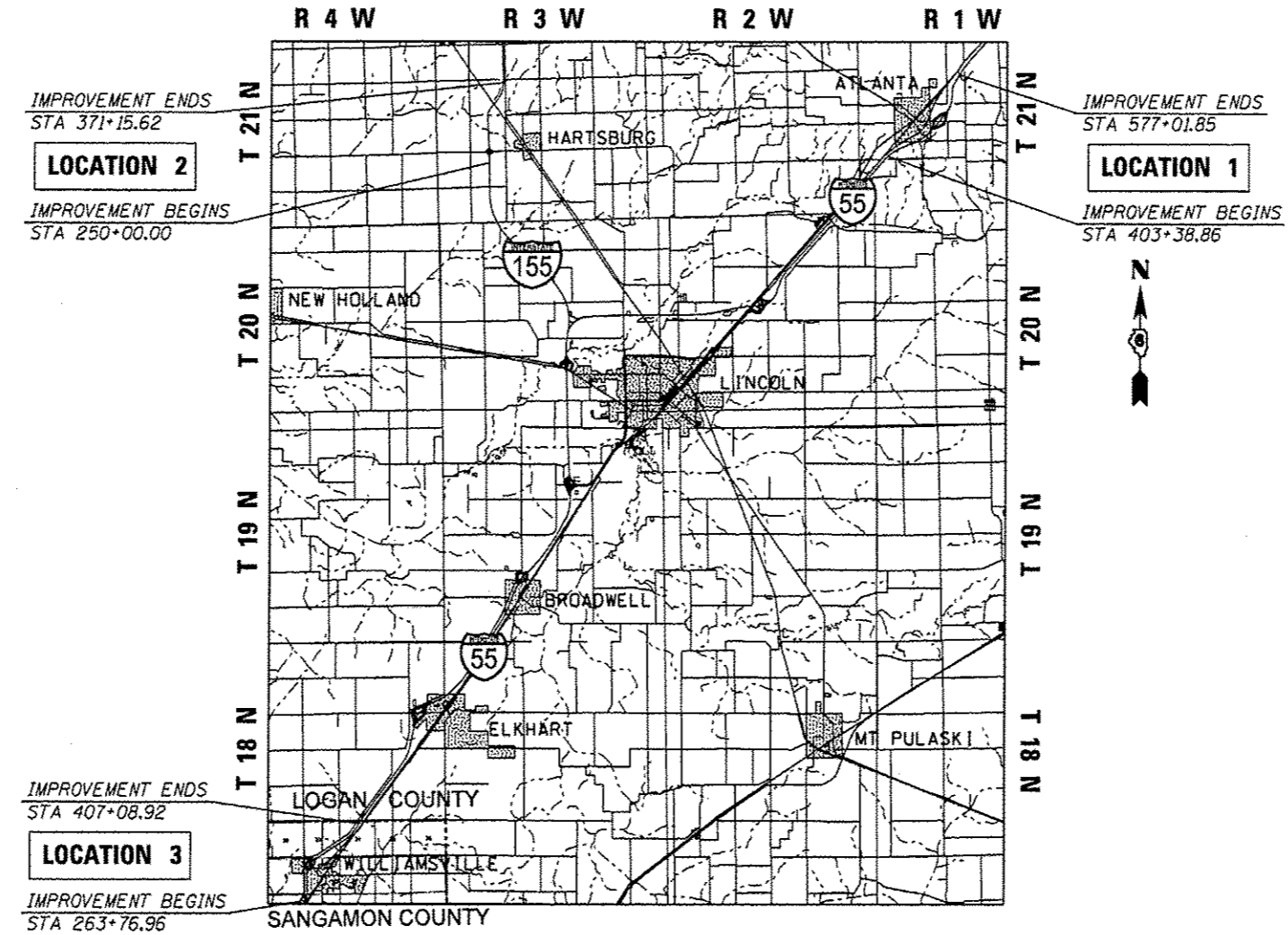
ADT = I-55 ATLANTA: 19,950 2011
 ADT = I-155 HARTSBURG: 9,450 2011
 ADT = I-55 WILLIAMSVILLE: 30,350 2011

- INDEX OF SHEETS**
- 1 COVER
 - 2 GENERAL NOTES
 - 3 SUMMARY OF QUANTITIES
 - 4 SCHEDULE OF QUANTITIES
 - 5-7 PLAN (LOCATION #1)
 - 8-9 PLAN (LOCATION #2)
 - 10-12 PLAN (LOCATION #3)

- STANDARDS**
- 000001-06
 - 635001-01
 - 701101-02
 - 701106-02
 - 701901-02
 - 701426-04

FAI 55 & FAI 155 (I-55 & I-155)
SECTION D-6 DELINEATORS 2011
PROJECT ACHSIP-0005(909)
VARIOUS DELINEATOR IMPROVEMENTS
LOGAN AND SANGAMON COUNTIES

C-96-188-10



FULL SIZE PLANS HAVE BEEN PREPARED USING STANDARD ENGINEERING SCALES. REDUCED SIZED PLANS WILL NOT CONFORM TO STANDARD SCALES. IN MAKING MEASUREMENTS ON REDUCED PLANS, THE ABOVE SCALES MAY BE USED.

J.U.L.I.E.
 JOINT UTILITY LOCATION INFORMATION FOR EXCAVATION
 1-800-892-0123
 OR 811

PROJECT ENGINEER: JEFF MYERS (217) 782-4761
 TEAM MANAGER: TOM COX (217) 524-7940

CONTRACT NO. 72D57

STATE OF ILLINOIS
 DEPARTMENT OF TRANSPORTATION
 DIVISION OF HIGHWAYS

SUBMITTED August 14 20 12
Roger Zander
 DEPUTY DIRECTOR OF HIGHWAYS, REGION ENGINEER

October 5 20 12
John D. Caranzelli PE, Inc.
 acting ENGINEER OF DESIGN AND ENVIRONMENT

October 5 20 12
William R. Freiler
 acting DIRECTOR OF HIGHWAYS, CHIEF ENGINEER

PRINTED BY THE AUTHORITY
OF THE STATE OF ILLINOIS

GENERAL NOTES

GENERAL NOTES

- ① WHERE SECTION OR SUBSECTION MONUMENTS ARE ENCOUNTERED, THE ENGINEER SHALL BE NOTIFIED BEFORE SUCH MONUMENTS ARE REMOVED. THE CONTRACTOR SHALL PROTECT AND CAREFULLY PRESERVE ALL PROPERTY MARKS, MONUMENTS, AND PERMANENT SURVEY MARKERS UNTIL THE OWNER, AND AUTHORIZED SURVEYOR OR AGENT HAS WITNESSES OR OTHERWISE REFERENCED THEIR LOCATION.
- ② ANY REFERENCE TO A STANDARD IN THE PLANS SHALL BE INTERPRETED TO MEAN THE EDITION, AS INDICATED BY THE SUB-NUMBER LISTED IN THE INDEX OF SHEETS, OR THE COPY OF THE STANDARD INCLUDED IN THE PLANS.
- ③ UNLESS NOTED OTHERWISE, STATIONS AND OFFSETS REFER TO CENTERLINE OF PROJECT.
- ④ IN ADDITION TO FIELD SURVEYS AND AERIAL SURVEYS, PLAN DIMENSIONS AND DETAILS RELATIVE TO THE EXISTING FACILITIES HAVE BEEN TAKEN FROM EXISTING PLANS AND ARE SUBJECT TO TO CONSTRUCTION VARIATIONS. IT SHALL BE THE CONTRACTORS RESPONSIBILITY TO VERIFY SUCH DIMENSIONS AND DETAILS IN THE FIELD. SUCH VARIATIONS SHALL NOT BE A CAUSE FOR ADDITIONAL COMPENSATIONS DUE TO A CHANGE IN THE SCOPE OF THE WORK, HOWEVER, THE CONTRACTOR WILL BE PAID FOR THE QUANTITY ACTUALLY FURNISHED AT THE UNIT PRICE BID FOR THE WORK.

COMMITMENTS

THE RESIDENT ENGINEER SHALL CONTACT STUDIES AND PLANS ON ANY MAJOR PLAN CHANGES MADE DURING CONSTRUCTION.

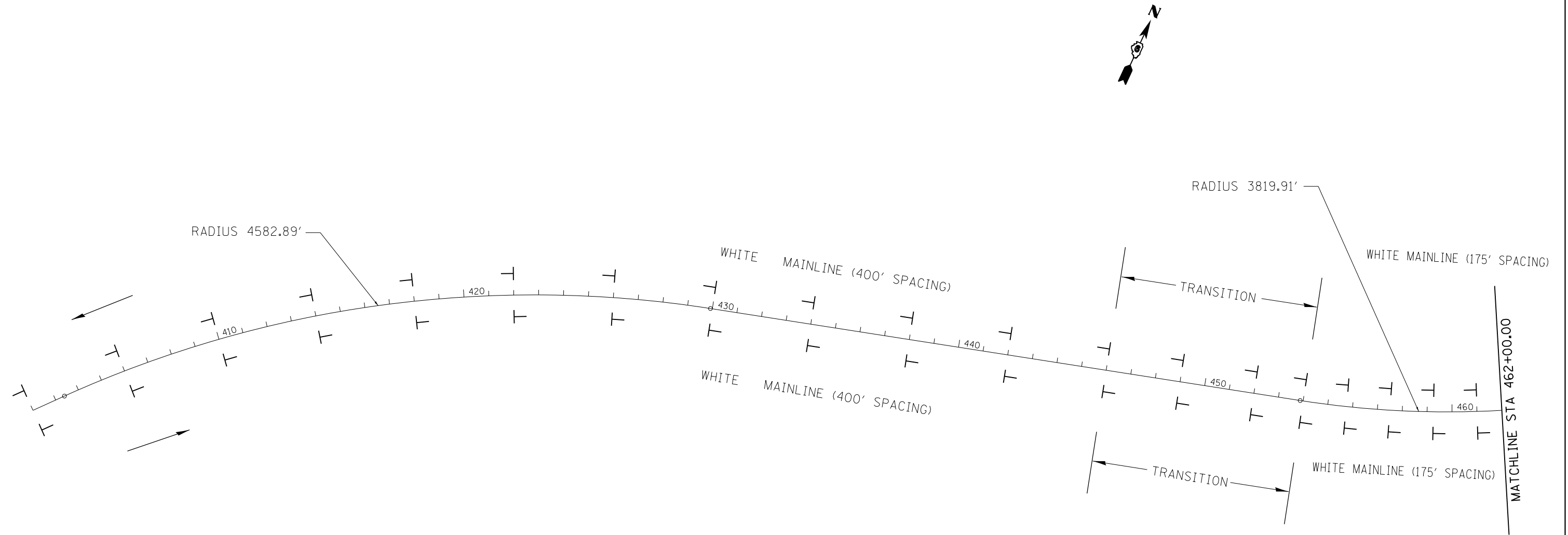
DISTRICT SIX	
EXAMINED <u>7/12</u>	20 <u>12</u>
<i>Albil...</i>	
OPERATIONS ENGINEER	

EXAMINED <u>July 16</u>	20 <u>12</u>
<i>Tommy...</i>	
PROJECT IMPLEMENTATION ENGINEER	
EXAMINED <u>August 14</u>	20 <u>12</u>
<i>2RMLI</i>	
PROGRAM DEVELOPMENT ENGINEER	

SUMMARY OF QUANTITIES				LOGAN COUNTY		SANGAMON COUNTY
				FAI 55	FAI 155	FAI 55
				ATLANTA	HARTSBURG	WILLIAMSVILLE
				RURAL HSIP 90% FED 10% STATE	RURAL HSIP 90% FED 10% STATE	RURAL HSIP 90% FED 10% STATE
CODE NO.	ITEM	UNIT	TOTAL QUANTITY	CONST. TYPE CODE	CONST. TYPE CODE	CONST. TYPE CODE
				0021	0021	0021
67100100	MOBILIZATION	L SUM	1	.34	.33	.33
Z0024478	FLEXIBLE DELINEATORS	EACH	701	258	188	255
X6350120	DELINEATOR REMOVAL	EACH	192	78	51	63

FLEXIBLE DELINEATORS			
LOCATION	EACH	WHITE	YELLOW
ATLANTA INTERCHANGE (I-55)			
STA 402+00 TO STA 577+25	130	130	0
RAMP A	40	25	15
RAMP B	26	20	6
RAMP C	38	24	14
RAMP D	24	19	5
SUBTOTAL		258	40
HARTSBURG INTERCHANGE (I-155)			
STA 270+00 TO STA 370+00	88	88	0
RAMP A	23	17	6
RAMP B	27	21	6
RAMP C	23	17	6
RAMP D	27	21	6
SUBTOTAL		188	24
WILLIAMSVILLE INTERCHANGE (I-55)			
STA 263+00 TO STA 407+00	96	96	0
RAMP A	35	26	9
RAMP B	37	26	11
RAMP C	31	21	10
RAMP D	56	37	19
SUBTOTAL		255	49
TOTAL		701	113

DELINEATOR REMOVAL	
LOCATION	EACH
ATLANTA INTERCHANGE (I-55)	
STA 402+00 TO STA 577+25	36
RAMP A	13
RAMP B	9
RAMP C	12
RAMP D	8
SUBTOTAL	
HARTSBURG INTERCHANGE (I-155)	
STA 270+00 TO STA 370+00	9
RAMP A	11
RAMP B	10
RAMP C	11
RAMP D	10
SUBTOTAL	
WILLIAMSVILLE INTERCHANGE (I-55)	
STA 263+00 TO STA 407+00	11
RAMP A	13
RAMP B	15
RAMP C	8
RAMP D	16
SUBTOTAL	
TOTAL	
192	



NOTE: SEE HIGHWAY STANDARD 635001 FOR ADDITIONAL INFORMATION.



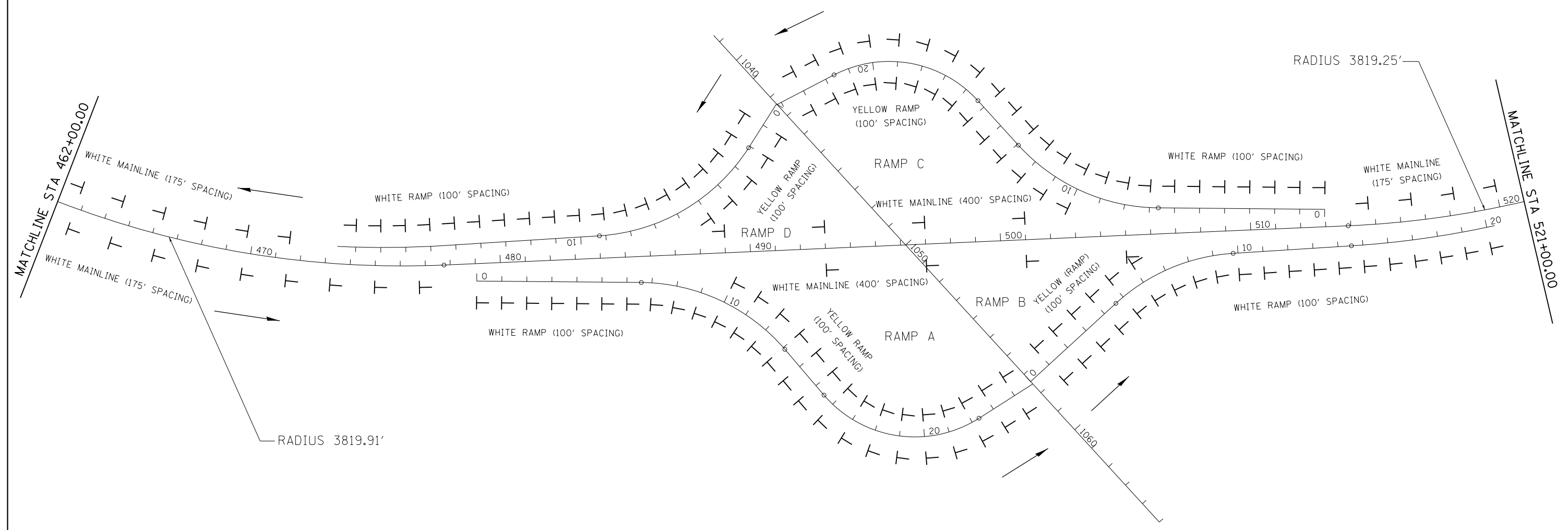
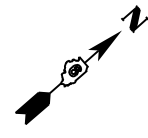
FILE NAME =	USER NAME = sparksgw	DESIGNED -	REVISED -
ct:\pw\work\p\idot\sparksgw\0221092\0672057-sht-plan-HI.dgn		DRAWN -	REVISED -
	PLOT SCALE = 400.0000' / in.	CHECKED -	REVISED -
	PLOT DATE = Aug-15-2012 08:23:13AM	DATE -	REVISED -

**STATE OF ILLINOIS
DEPARTMENT OF TRANSPORTATION**

**I-55 PLAN SHEET ATLANTA
LOCATION #1**

SCALE: 1" = 200' SHEET 1 OF 3 SHEETS STA. TO STA.

F.A.I. RTE.	SECTION	COUNTY	TOTAL SHEETS	SHEET NO.
•	D6 Delineators 2011	••	12	5
ILLINOIS FED. AID PROJECT			CONTRACT NO. 72D57	



NOTE: SEE HIGHWAY STANDARD 635001 FOR ADDITIONAL INFORMATION.



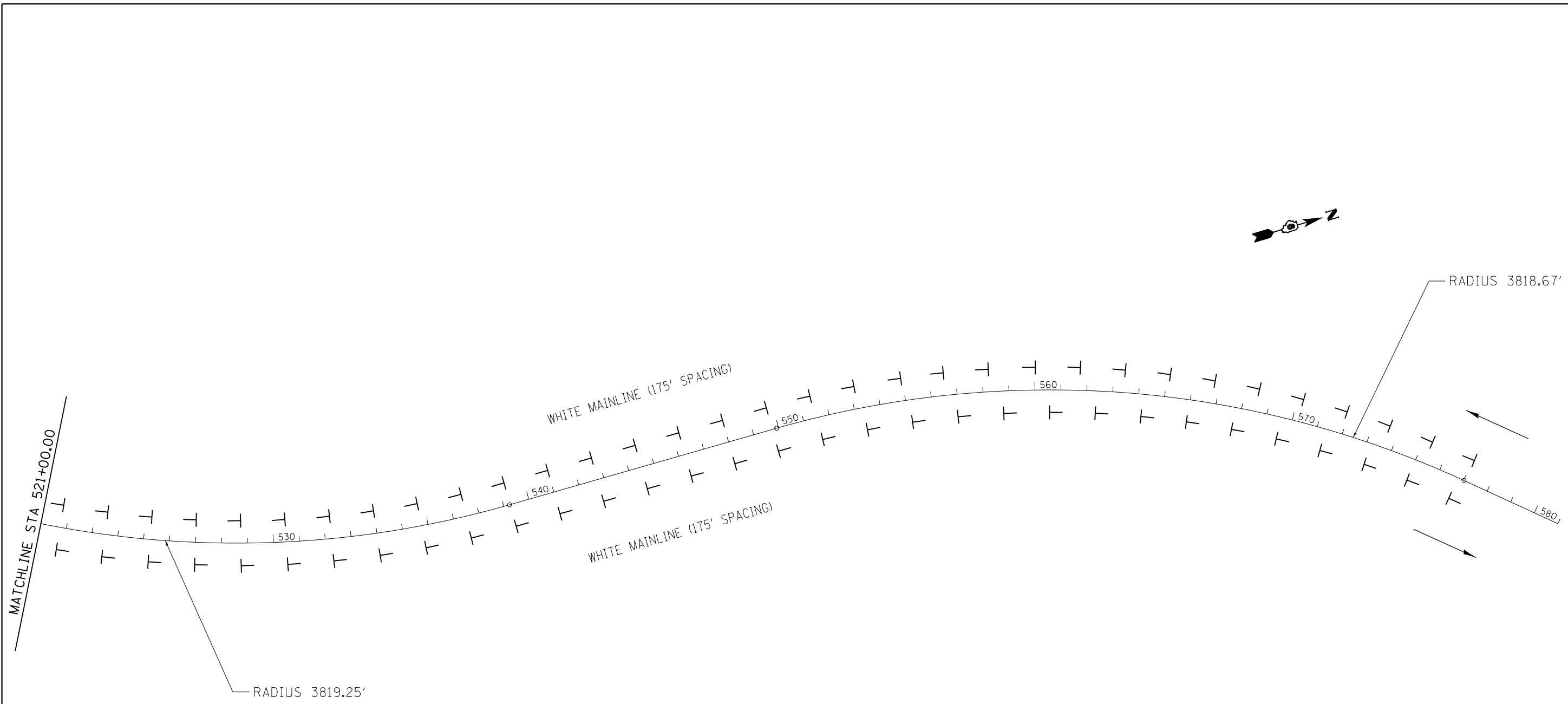
FILE NAME =	USER NAME = sparksgw	DESIGNED -	REVISED -
ct:\pw\work\pwidot\sparksgw\10221092\0672057-sht-plan-HI.dgn		DRAWN -	REVISED -
	PLOT SCALE = 400.0000' / in.	CHECKED -	REVISED -
	PLOT DATE = Aug-15-2012 08:23:13AM	DATE -	REVISED -

**STATE OF ILLINOIS
DEPARTMENT OF TRANSPORTATION**

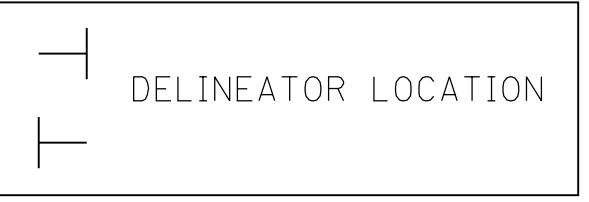
**I-55 PLAN SHEET ATLANTA
LOCATION #1**

SCALE: 1" = 200' SHEET 2 OF 3 SHEETS STA. TO STA.

F.A.I. RTE.	SECTION	COUNTY	TOTAL SHEETS	SHEET NO.
•	D6 Delineators 2011	••	12	6
ILLINOIS FED. AID PROJECT			CONTRACT NO. 72D57	
•FAI 55 & FAI 155			••LOGAN & SANGAMON	



NOTE: SEE HIGHWAY STANDARD 635001 FOR ADDITIONAL INFORMATION.

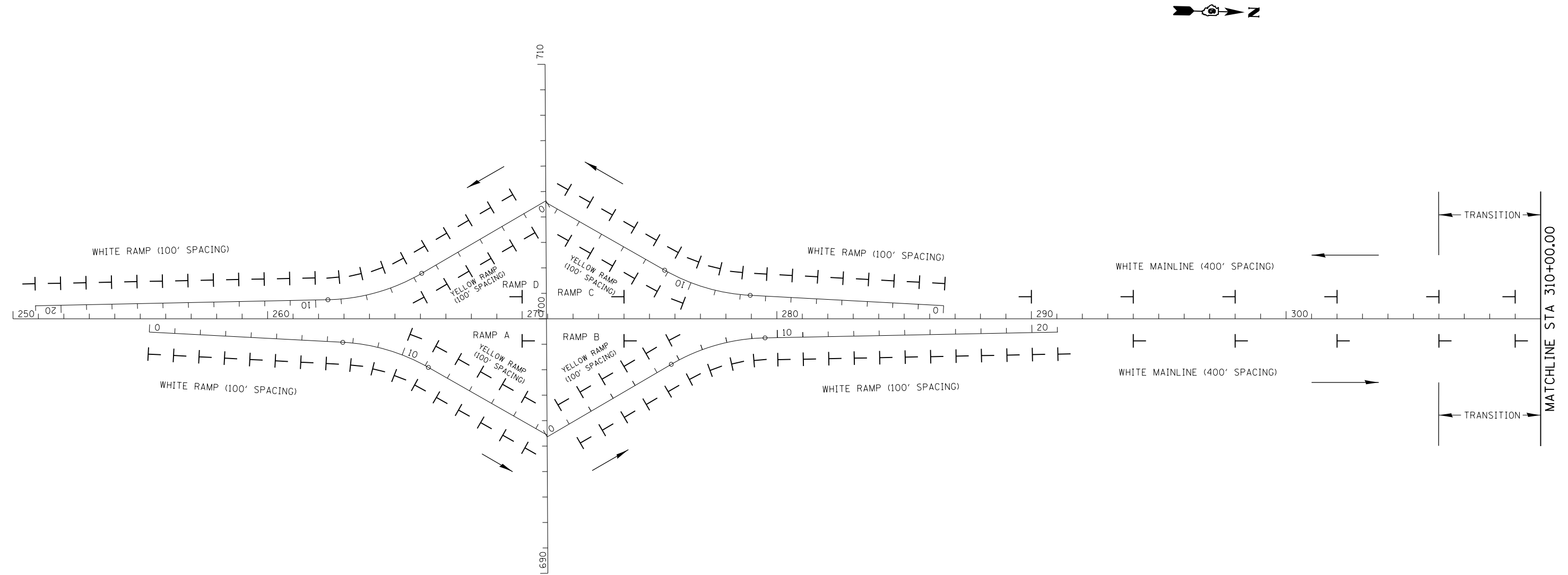


FILE NAME =	USER NAME = sparksgw	DESIGNED -	REVISED -
ci:\pwork\pwork\sparksgw\0221092\0672057-sht-plan-HI.dgn		DRAWN -	REVISED -
	PLOT SCALE = 400.0000' / in.	CHECKED -	REVISED -
	PLOT DATE = Aug-15-2012 08:23:13AM	DATE -	REVISED -

**STATE OF ILLINOIS
DEPARTMENT OF TRANSPORTATION**

I-55 PLAN SHEET ATLANTA LOCATION #1			
SCALE: 1" = 200'	SHEET 3	OF 3 SHEETS	STA. TO STA.

F.A.I. RTE.	SECTION	COUNTY	TOTAL SHEETS	SHEET NO.
•	D6 Delineators 2011	••	12	7
ILLINOIS FED. AID PROJECT			CONTRACT NO. 72D57	



NOTE: SEE HIGHWAY STANDARD 635001
FOR ADDITIONAL INFORMATION.



FILE NAME =	USER NAME = sparksgw	DESIGNED -	REVISED -
ct:\pw\work\p1dot\sparksgw\10221092\0672057-sht-plan-A1.dgn		DRAWN -	REVISED -
	PLOT SCALE = 400.0000' / in.	CHECKED -	REVISED -
	PLOT DATE = Aug-15-2012 08:23:15AM	DATE -	REVISED -

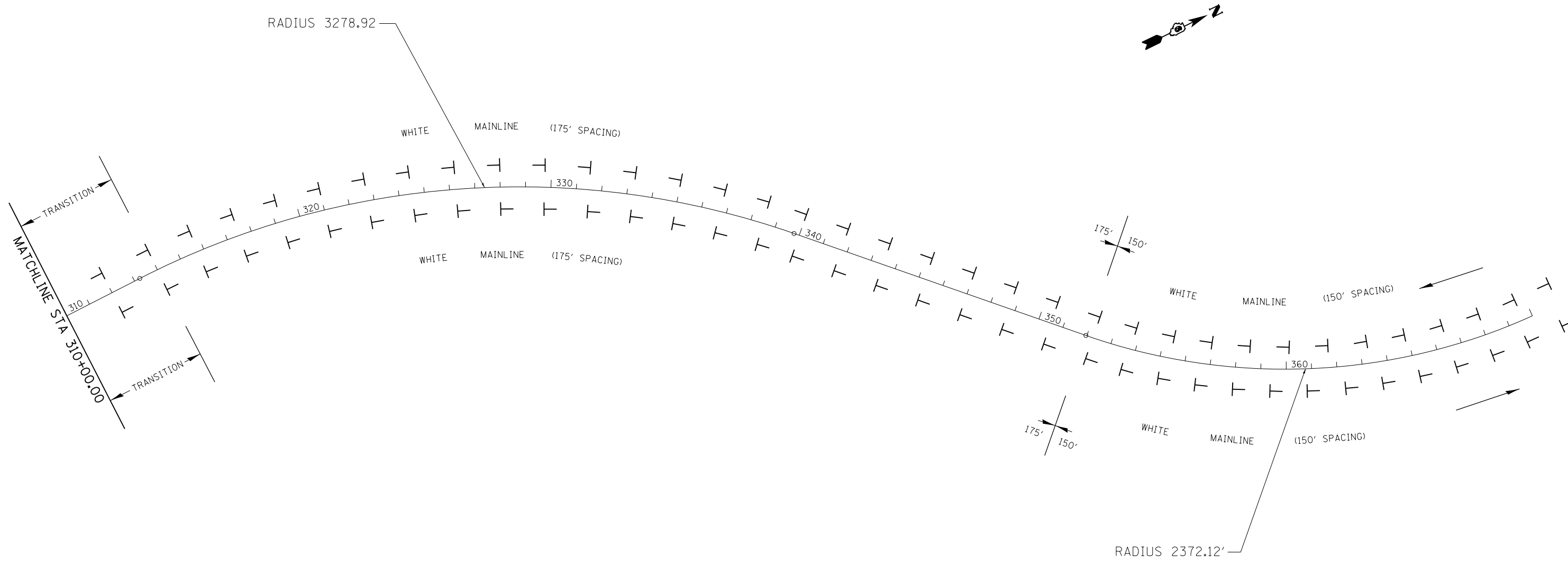
STATE OF ILLINOIS
DEPARTMENT OF TRANSPORTATION

I-155 PLAN SHEET HARTSBURG
LOCATION #2

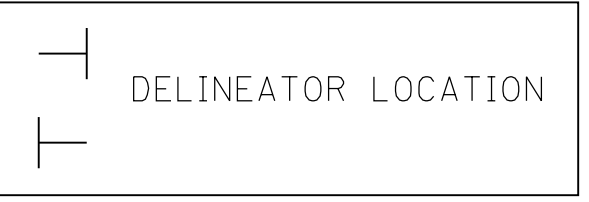
SCALE: 1" = 200' SHEET 1 OF 2 SHEETS STA. TO STA.

F.A.I. RTE.	SECTION	COUNTY	TOTAL SHEETS	SHEET NO.
•	D6 Delineators 2011	••	12	8
			CONTRACT NO. 72D57	
ILLINOIS FED. AID PROJECT				

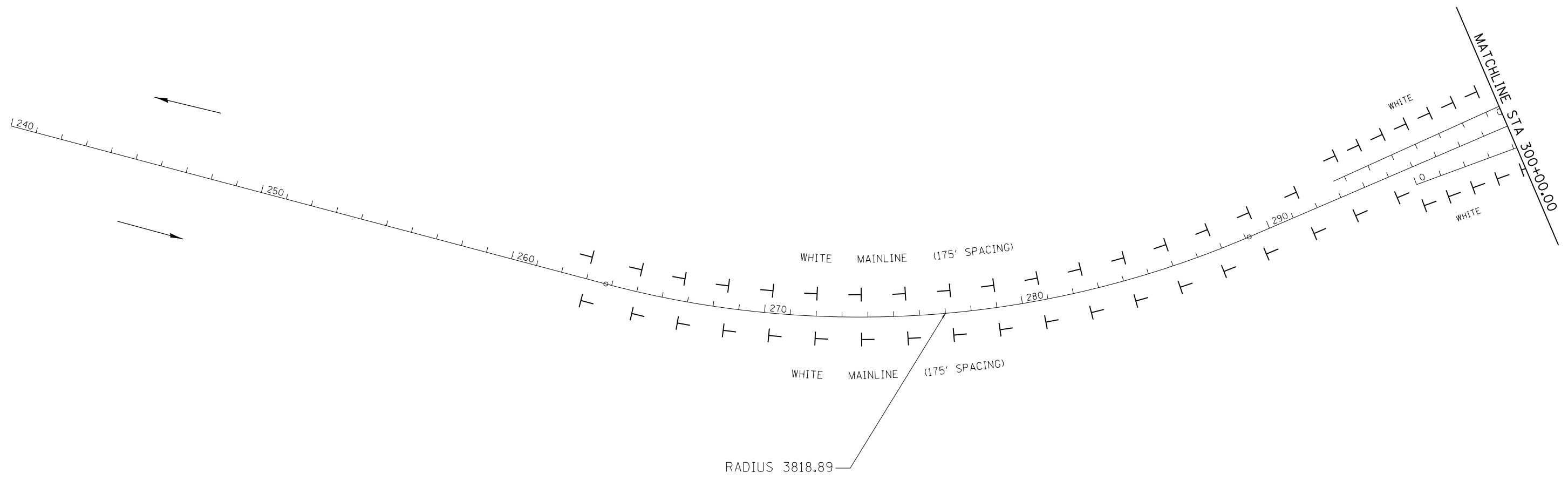
••LOGAN & SANGAMON



NOTE: SEE HIGHWAY STANDARD 635001 FOR ADDITIONAL INFORMATION.



FILE NAME =	USER NAME = sparksgw	DESIGNED -	REVISED -	STATE OF ILLINOIS DEPARTMENT OF TRANSPORTATION	I-155 PLAN SHEET HARTSBURG LOCATION #2			F.A.I. RTE.	SECTION	COUNTY	TOTAL SHEETS	SHEET NO.		
c:\pwwork\pwwork\sparksgw\0221092\0672057-sht-plan-A1.dgn		DRAWN -	REVISED -		SCALE: 1" = 200'	SHEET 2	OF 2 SHEETS	STA.	TO STA.	•	D6 Delineators 2011	••	12	9
		CHECKED -	REVISED -								CONTRACT NO. 72D57			
		DATE -	REVISED -								ILLINOIS FED. AID PROJECT			



NOTE: SEE HIGHWAY STANDARD 635001 FOR ADDITIONAL INFORMATION.



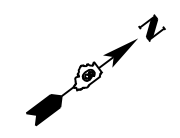
FILE NAME =	USER NAME = sparksgw	DESIGNED -	REVISED -
ct:\pw\work\p\idot\sparksgw\0221092\0672057-sht-plan-W1.dgn		DRAWN -	REVISED -
	PLOT SCALE = 400.0000' / in.	CHECKED -	REVISED -
	PLOT DATE = Aug-15-2012 08:23:16AM	DATE -	REVISED -

**STATE OF ILLINOIS
DEPARTMENT OF TRANSPORTATION**

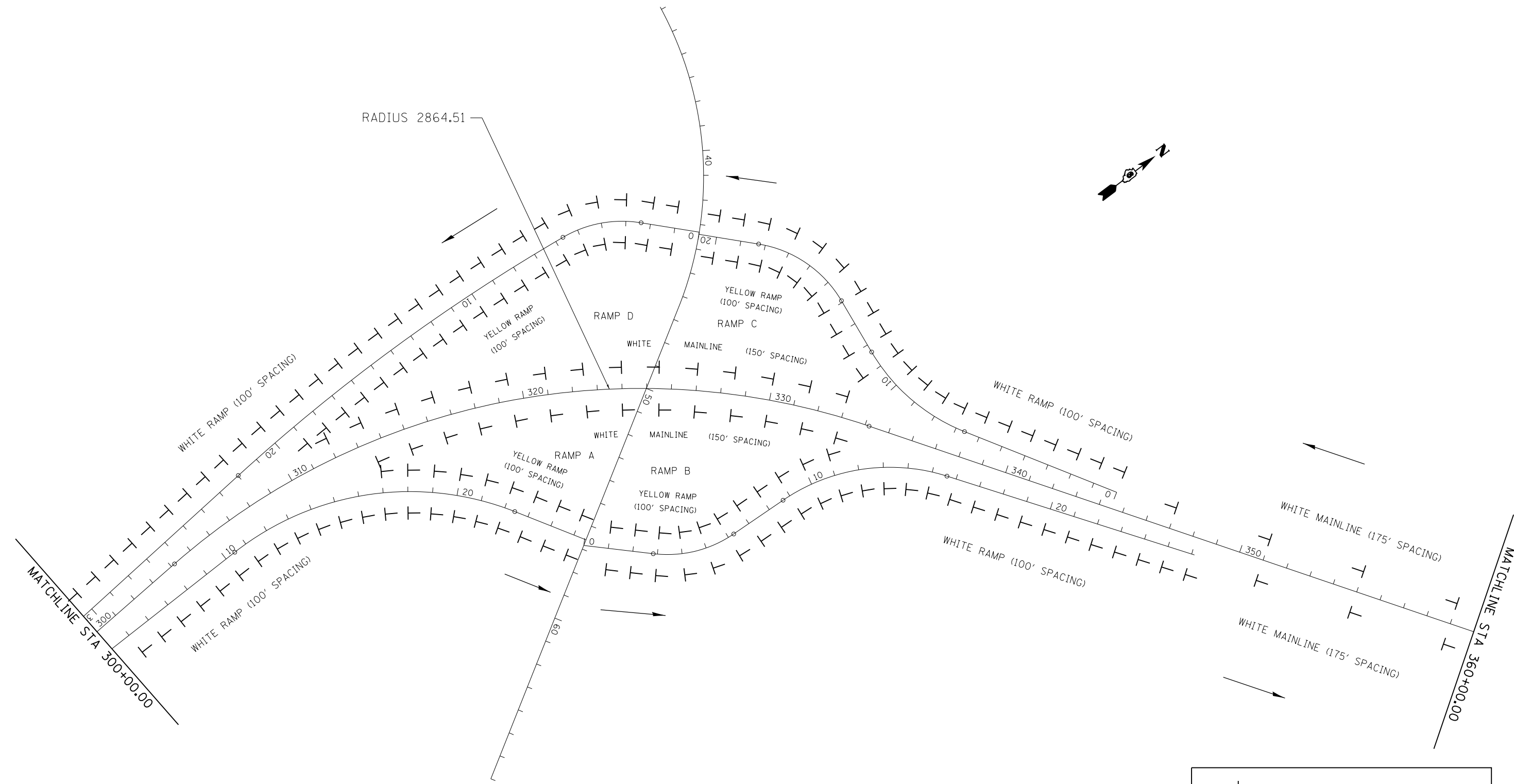
**I-55 PLAN SHEET WILLIAMSVILLE
LOCATION #3**

SCALE: 1" = 200' SHEET 1 OF 3 SHEETS STA. TO STA.

F.A.I. RTE.	SECTION	COUNTY	TOTAL SHEETS	SHEET NO.
•	D6 Delineators 2011	••	12	10
			CONTRACT NO. 72D57	



RADIUS 2864.51



NOTE: SEE HIGHWAY STANDARD 635001 FOR ADDITIONAL INFORMATION.



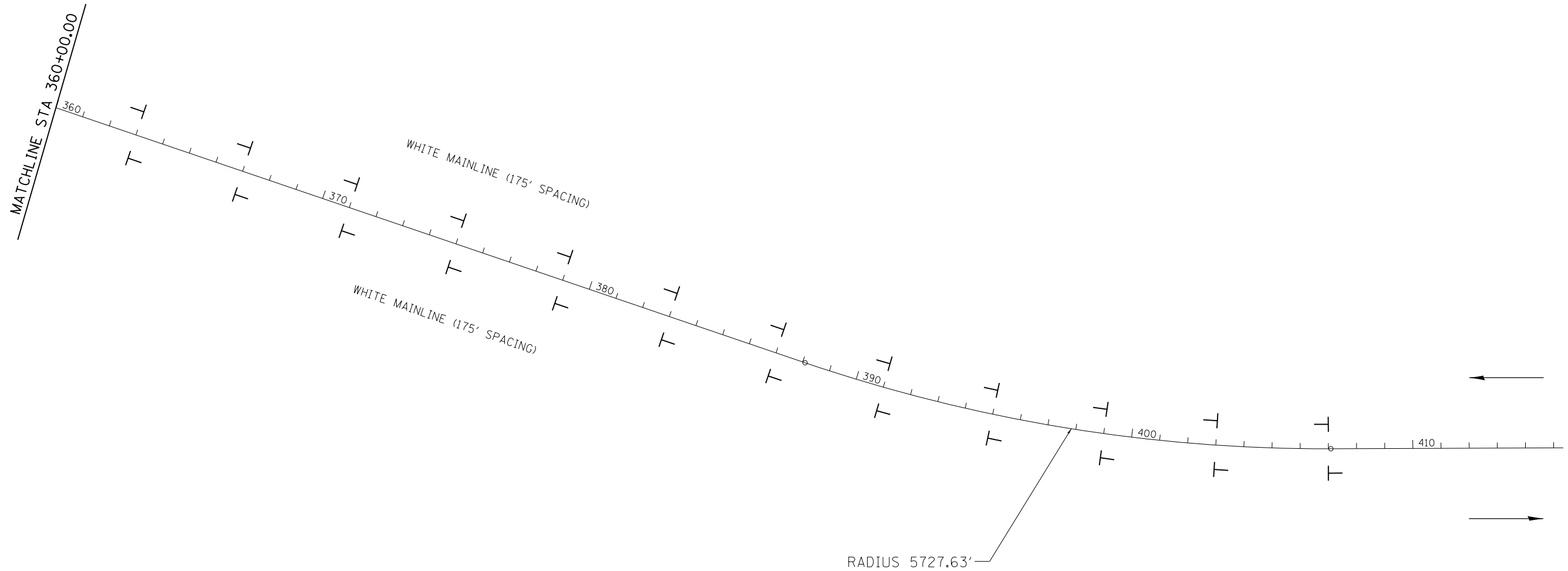
FILE NAME =	USER NAME = sparksgw	DESIGNED -	REVISED -
et:\pw\work\p\dot\sparksgw\0221092\0672057-sht-plan-W1.dgn		DRAWN -	REVISED -
	PLOT SCALE = 400.0000' / in.	CHECKED -	REVISED -
	PLOT DATE = Aug-15-2012 08:23:17AM	DATE -	REVISED -

**STATE OF ILLINOIS
DEPARTMENT OF TRANSPORTATION**

**I-55 PLAN SHEET WILLIAMSVILLE
LOCATION #3**

SCALE: 1" = 200' SHEET 2 OF 3 SHEETS STA. TO STA.

F.A.I. RTE.	SECTION	COUNTY	TOTAL SHEETS	SHEET NO.
•	D6 Delineators 2011	••	12	11
ILLINOIS FED. AID PROJECT			CONTRACT NO. 72D57	
•FAI 55 & FAI 155			••LOGAN & SANGAMON	



NOTE: SEE HIGHWAY STANDARD 635001 FOR ADDITIONAL INFORMATION.



FILE NAME =	USER NAME = sparksgw	DESIGNED -	REVISED -	STATE OF ILLINOIS DEPARTMENT OF TRANSPORTATION	I-55 PLAN SHEET WILLIAMSVILLE LOCATION #3			F.A.I. RTE.	SECTION	COUNTY	TOTAL SHEETS	SHEET NO.
ct:\pw\work\p\idot\sparksgw\0221092\0672057-sht-plan-W1.dgn		DRAWN -	REVISED -		•	D6 Delineators 2011	••	12	12			
		CHECKED -	REVISED -		CONTRACT NO. 72057							
		DATE -	REVISED -		SCALE: 1" = 200'	SHEET 3	OF 3 SHEETS	STA.	TO STA.	ILLINOIS FED. AID PROJECT	•FAI 55 & FAI 155	••LOGAN & SANGAMON