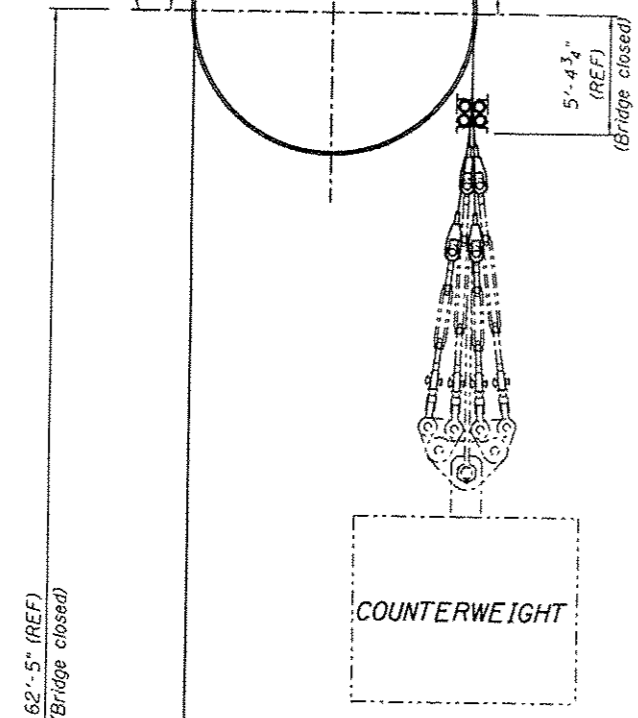


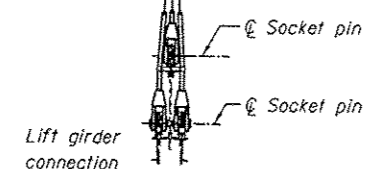
19'-7⁵/₈" on circumference
6'-3" Radius

☉ Sheave

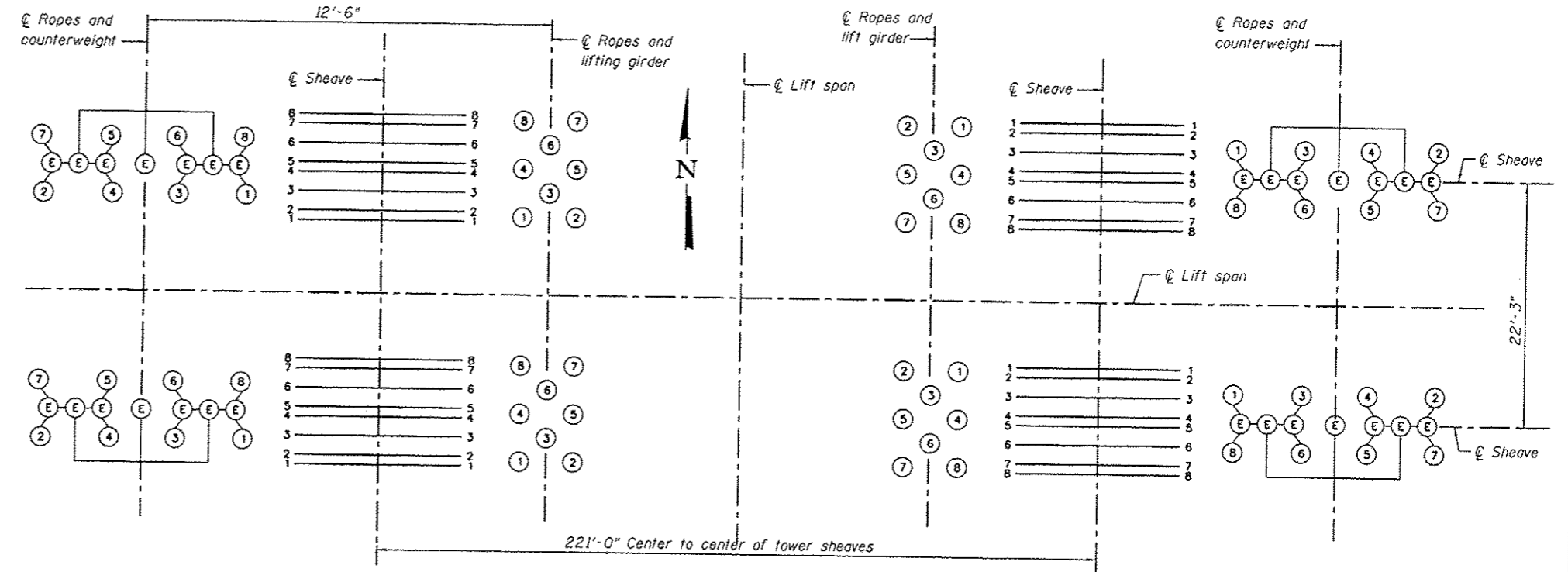


COUNTERWEIGHT

62'-5" (REF)
(Bridge closed)



ROPE ARRANGEMENT
SPAN CLOSED



PIER NO. 4 TOWER

PIER NO. 5 TOWER

ROPE LAYOUT

Rope #	Length
1	100'-7"
2	103'-7"
3	100'-7"
4	100'-7"
5	103'-7"
6	97'-7"
7	100'-7"
8	103'-7"

ROPE LENGTH TABLE

LEGEND

- ① Rope number
- ☉ Equalizer attachment point

Notes:
① For Mechanical Installation General Notes, see sheet no. 11 of 15.



USER NAME *	DESIGNED AMB	REVISED 10/25/12 AMB
PLOT SCALE *	CHECKED GF	REVISED
PLOT DATE *	DRAWN DTP	REVISED
	CHECKED GF	REVISED

STATE OF ILLINOIS
DEPARTMENT OF TRANSPORTATION

WIRE ROPE REPLACEMENT DETAILS - 2
STRUCTURE NO. 086-0001

SHEET NO. 15 OF 15 SHEETS

F.A.P. RTE.	SECTION	COUNTY	TOTAL SHEETS	SHEET NO.
757	(20) I	PIKE/SCOTT	17	17
CONTRACT NO. 72F 75			ILLINOIS FED. AID PROJECT	