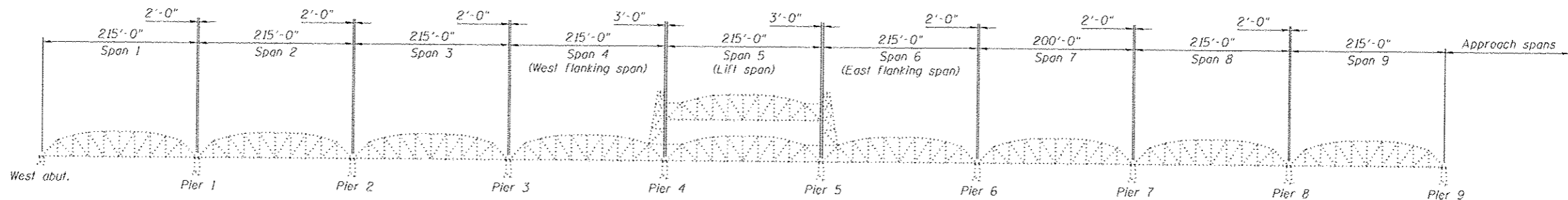


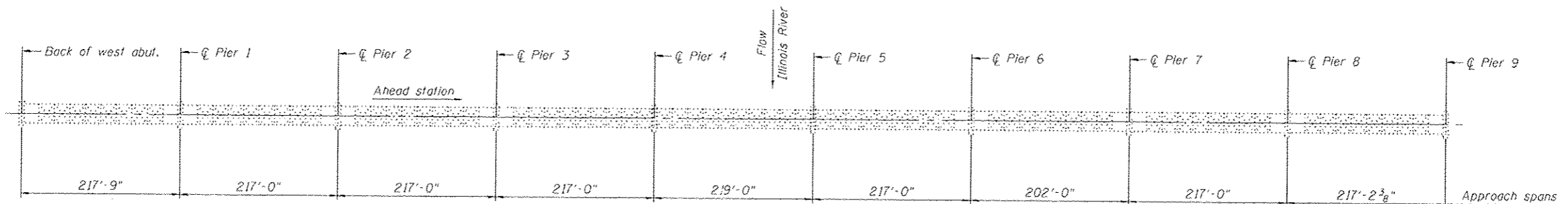
Bench Mark: Not required.

Existing Structure: S.N. 086-0001 built 1929 as S.B.I. Rte. 36, Sec. 20B, C & D. Structure consists of 8 fixed truss spans, one moveable truss span, & 29 WF approach spans at the east end of the structure. 3178'-11" bk.-bk. abut., 25'-11" c.c. truss, 25'-0" o.g. deck approach spans. Major rehabilitation of the structure was performed in 1981 and 2004. Bridge to be closed to traffic during repairs.

Salvage: None



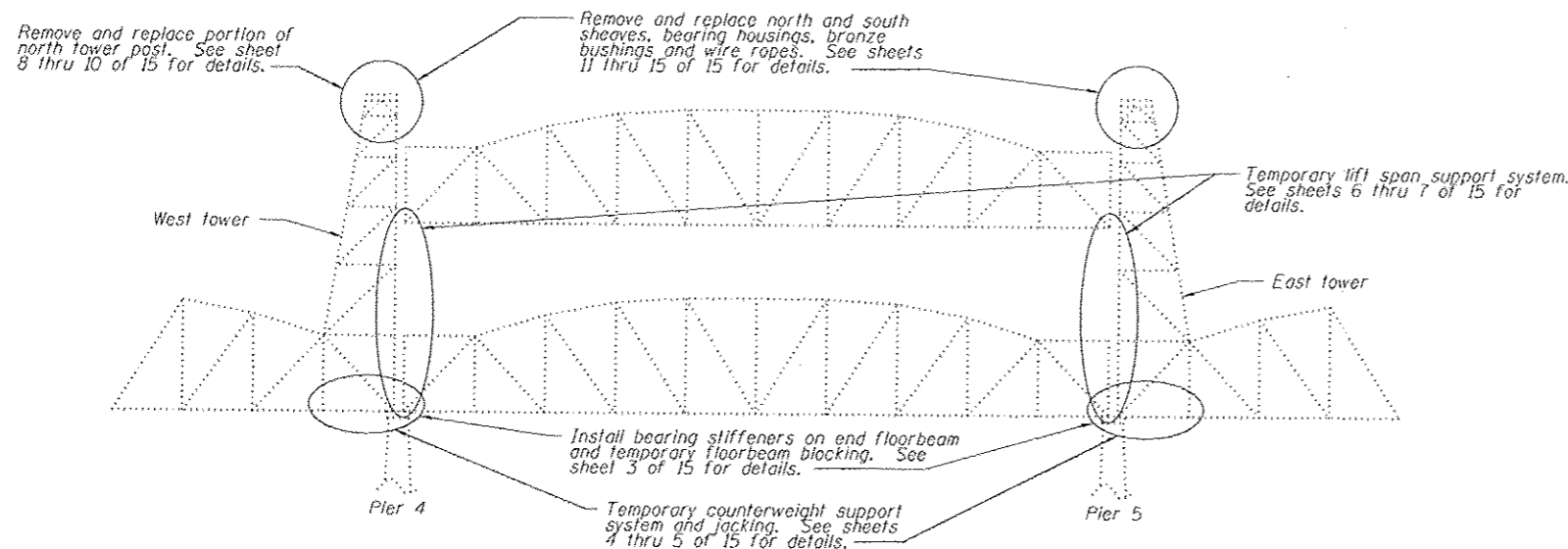
**GENERAL ELEVATION
(TRUSS SPANS)**



**GENERAL PLAN
(TRUSS SPANS)**

INDEX OF SHEETS

- 1 General Plan and Elevation
- 2 General Notes and Bill of Materials
- 3 End Floorbeam Strengthening
- 4 Temporary Counterweight Support System and Jacking Details - 1
- 5 Temporary Counterweight Support System and Jacking Details - 2
- 6 Temporary Lift Span Support System - 1
- 7 Temporary Lift Span Support System - 2
- 8 Tower Post Replacement Details - 1
- 9 Tower Post Replacement Details - 2
- 10 Tower Post Replacement Details - 3
- 11 Mechanical Installation General Notes
- 12 Mechanical Tower Top Details - 1
- 13 Mechanical Tower Top Details - 2
- 14 Wire Rope Replacement Details - 1
- 15 Wire Rope Replacement Details - 2



ELEVATION

(Lift span (span 5) - looking north)



**GENERAL PLAN AND ELEVATION
ILLINOIS RIVER BRIDGE AT E EDGE
OF FLORENCE (PUBLIC WATERS)
F.A.P. ROUTE 757 (IL 106) - SEC. (20) I
PIKE/SCOTT COUNTY
STATION 593+08.50
STRUCTURE NO. 086-0001**

REVISIED SHEET 10/29/12

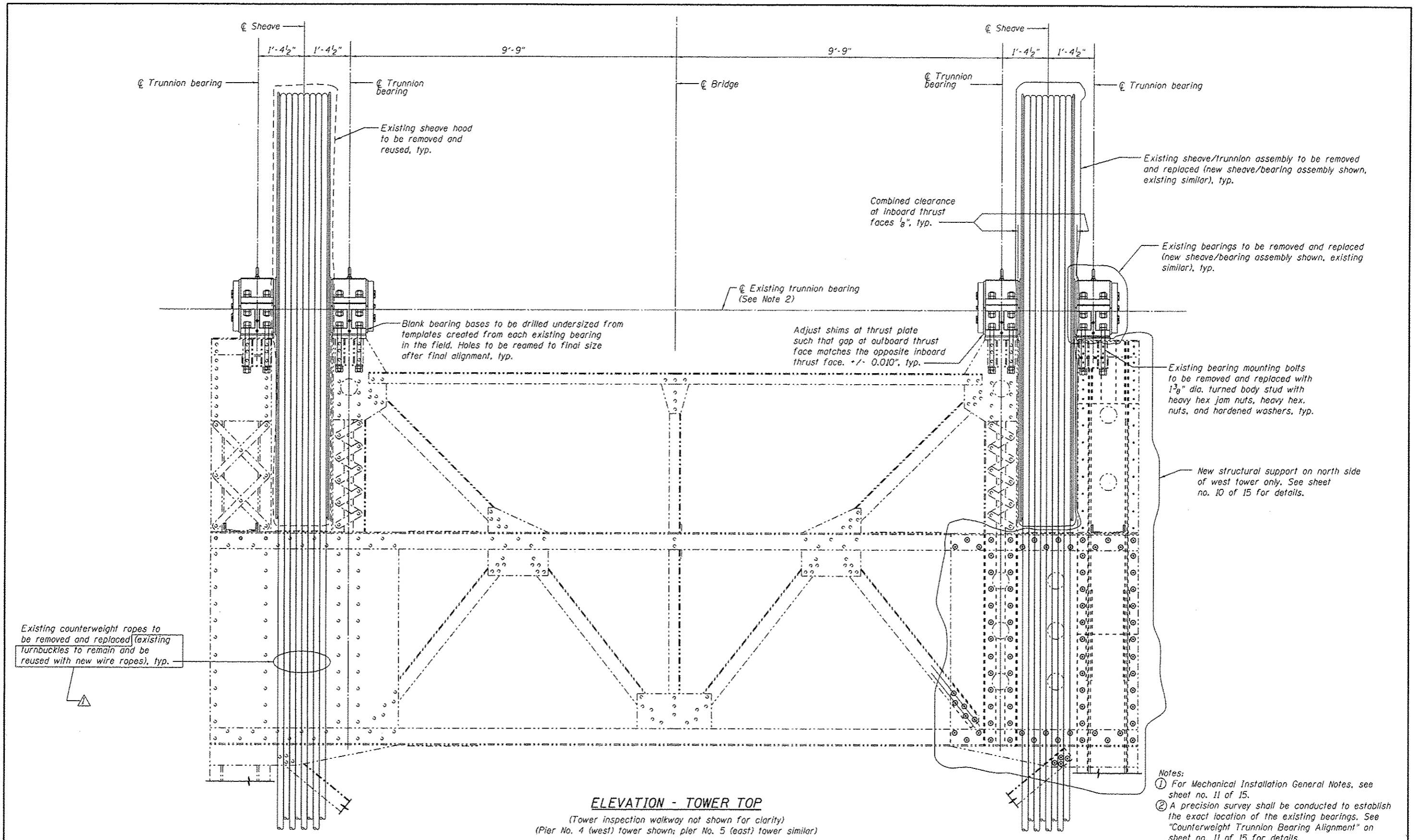


USER NAME	DESIGNED	TS	REVISED
PLOT SCALE	CHECKED	DBI	REVISED
PLOT DATE	DRAWN	TS	REVISED
	CHECKED	DBI	REVISED

**STATE OF ILLINOIS
DEPARTMENT OF TRANSPORTATION**

SHEET NO. 1 OF 15 SHEETS

F.A.P. RTE.	SECTION	COUNTY	TOTAL SHEETS	SHEET NO.
757	(20) I	PIKE/SCOTT	17	3
CONTRACT NO. 72F75				
ILLINOIS FED. AID PROJECT				



- Notes:
- ① For Mechanical Installation General Notes, see sheet no. 11 of 15.
 - ② A precision survey shall be conducted to establish the exact location of the existing bearings. See "Counterweight Trunnion Bearing Alignment" on sheet no. 11 of 15 for details.
 - ③ New sheave/bearing assemblies to be supplied by IDOT to the Contractor.

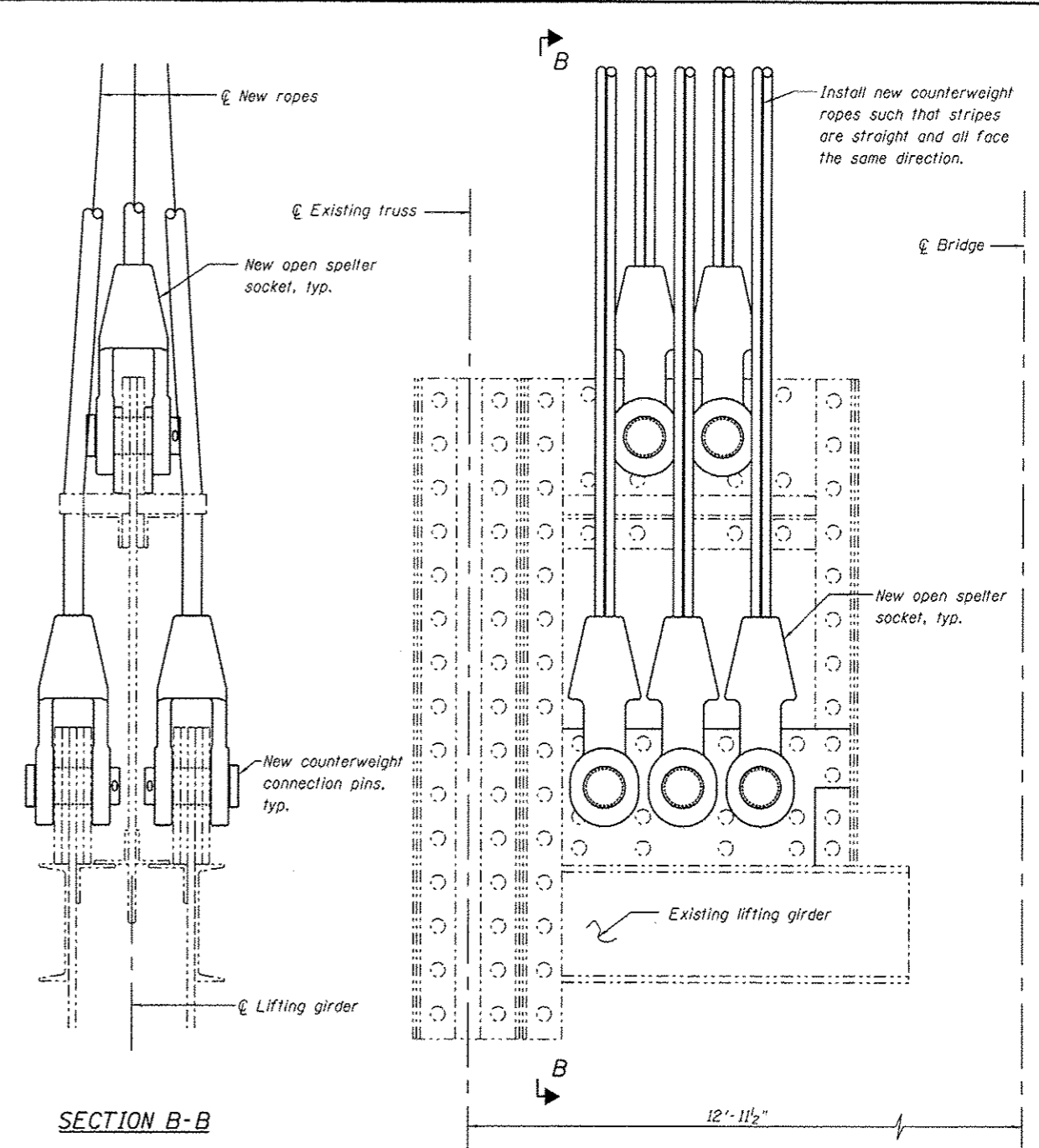
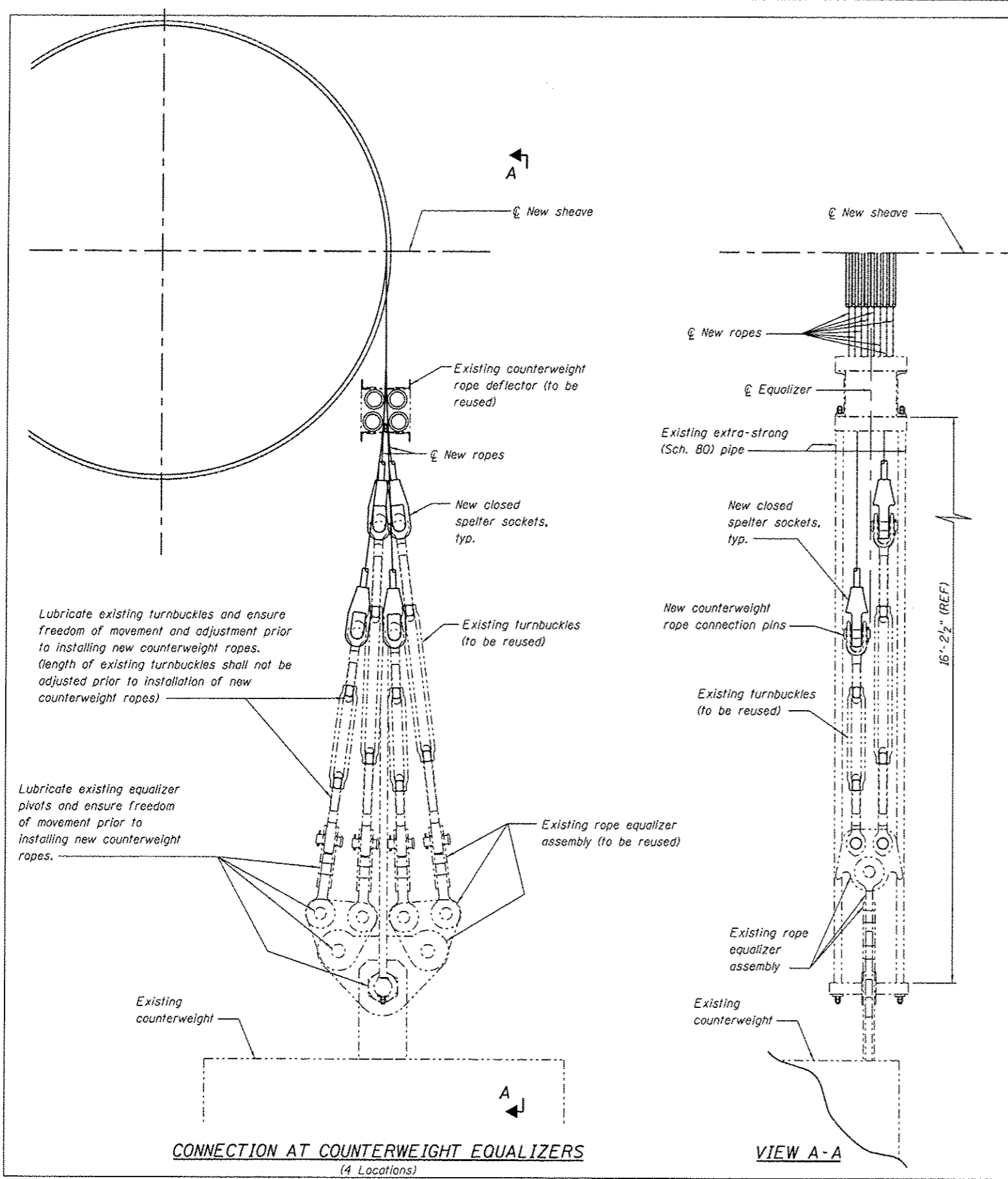


USER NAME *	DESIGNED AMB	REVISED 10/25/12 AMB
PLOT SCALE *	CHECKED GF	REVISED
PLOT DATE *	DRAWN DTP	REVISED
	CHECKED GF	REVISED

STATE OF ILLINOIS
DEPARTMENT OF TRANSPORTATION

MECHANICAL TOWER TOP DETAILS - 2
STRUCTURE NO. 086-0001
SHEET NO. 13 OF 15 SHEETS

F.A.P. RTE.	SECTION	COUNTY	TOTAL SHEETS	SHEET NO.
757	(20) I	PIKE/SCOTT	17	15
CONTRACT NO. 72F75				
ILLINOIS FED. AID PROJECT				



- Notes:
- ① For Mechanical Installation General Notes, see sheet no. 11 of 15.
 - ② Wire rope assemblies (including ropes, sockets and pins) to be supplied by IDOT to the Contractor.



USER NAME *	DESIGNED AMB	REVISED Δ 10/25/12 AMB
PLOT SCALE *	CHECKED GF	REVISED
PLOT DATE *	DRAWN DTP	REVISED
	CHECKED GF	REVISED

STATE OF ILLINOIS
DEPARTMENT OF TRANSPORTATION

WIRE ROPE REPLACEMENT DETAILS - 1
STRUCTURE NO. 086-0001

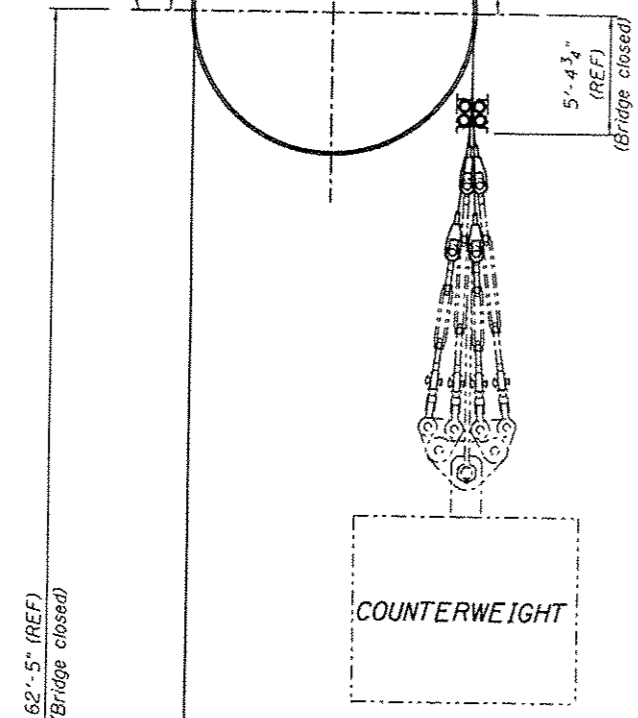
SHEET NO. 14 OF 15 SHEETS

F.A.P. RTE.	SECTION	COUNTY	TOTAL SHEETS	SHEET NO.
757	(20) I	PIKE/SCOTT	17	16

ILLINOIS FED. AID PROJECT
CONTRACT NO. 72F 75

19'-7⁵/₈" on circumference
6'-3" Radius

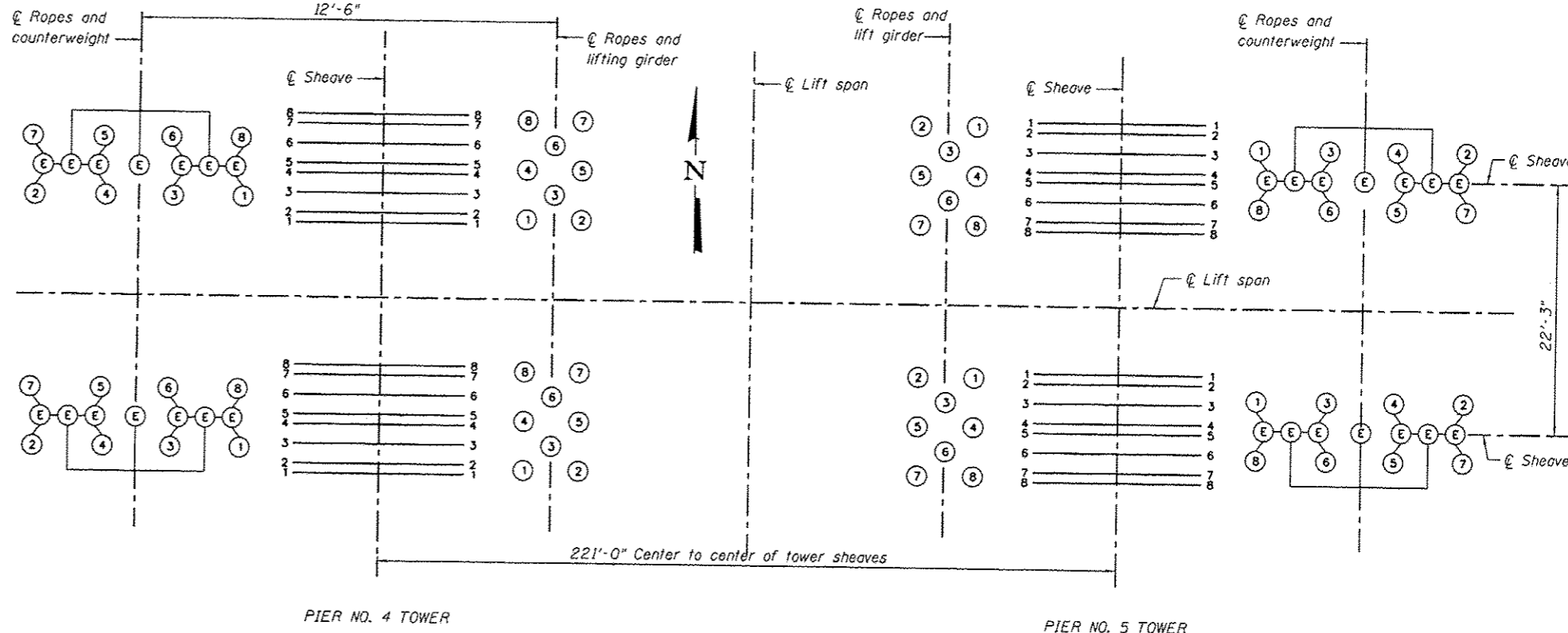
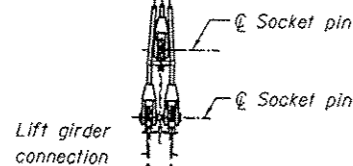
⊕ Sheave



COUNTERWEIGHT

62'-5" (REF)
(Bridge closed)

ROPE
ARRANGEMENT
SPAN CLOSED



PIER NO. 4 TOWER

PIER NO. 5 TOWER

ROPE LAYOUT

Rope #	Length
1	100'-7"
2	103'-7"
3	100'-7"
4	100'-7"
5	103'-7"
6	97'-7"
7	100'-7"
8	103'-7"

ROPE LENGTH TABLE

LEGEND

- Ⓡ Rope number
- ⓔ Equalizer attachment point

Notes:
① For Mechanical Installation General Notes, see sheet no. 11 of 15.



USER NAME *	DESIGNED AMB	REVISED 10/25/12 AMB
PLOT SCALE *	CHECKED GF	REVISED
PLOT DATE *	DRAWN DTP	REVISED
	CHECKED GF	REVISED

STATE OF ILLINOIS
DEPARTMENT OF TRANSPORTATION

WIRE ROPE REPLACEMENT DETAILS - 2
STRUCTURE NO. 086-0001

SHEET NO. 15 OF 15 SHEETS

F.A.P. RTE.	SECTION	COUNTY	TOTAL SHEETS	SHEET NO.
757	(20) I	PIKE/SCOTT	17	17
CONTRACT NO. 72F 75			ILLINOIS FED. AID PROJECT	