

F.A.I. RTE.	SECTION	COUNTY	TOTAL SHEETS	SHEET NO.
70	(18-47,48,49)R	Cumberland	30	1
		ILLINOIS	CONTRACT NO.	74416

STATE OF ILLINOIS
DEPARTMENT OF TRANSPORTATION
DIVISION OF HIGHWAYS

**PROPOSED
HIGHWAY PLANS**

FAI ROUTE 70 (I-70)
SECTION (18-47,48,49)R
PROJECT ACIM-070-4(14)123
RUBBLIZATION & OVERLAY
CUMBERLAND COUNTY

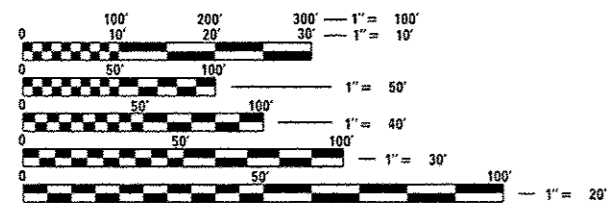
C-97-131-09

FOR INDEX OF SHEETS, SEE SHEET NO. 2

ADT = 19,300 (2010)

BRIDGE OMISSIONS

STRUCTURE #018-0051 & #018-0052
STA 486+23 TO STA 488+17

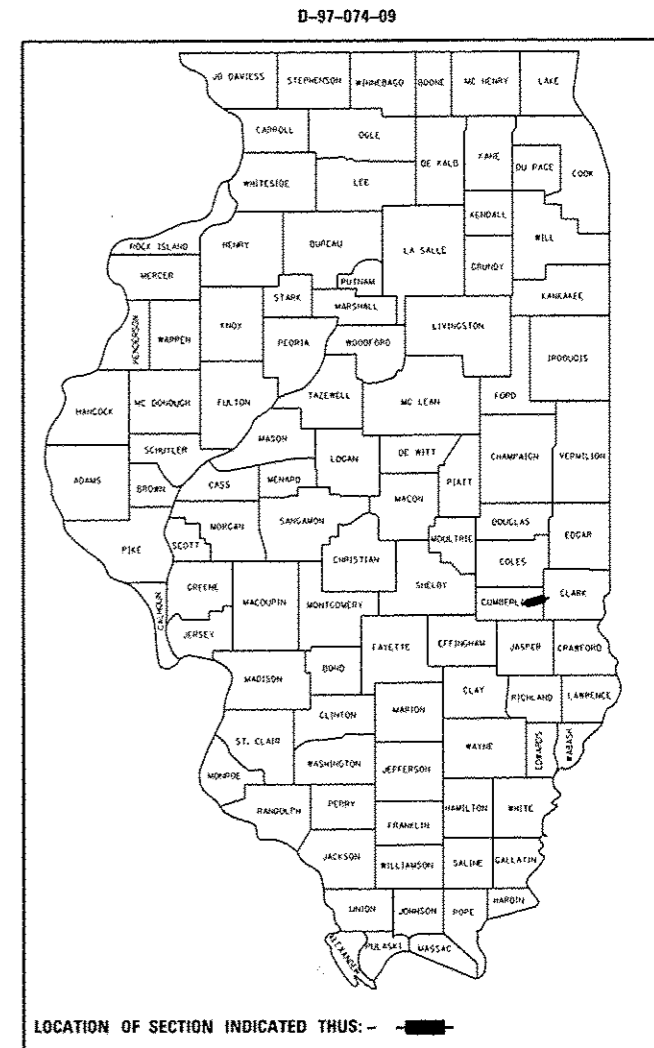


FULL SIZE PLANS HAVE BEEN PREPARED USING STANDARD ENGINEERING SCALES. REDUCED SIZED PLANS WILL NOT CONFORM TO STANDARD SCALES. IN MAKING MEASUREMENTS ON REDUCED PLANS, THE ABOVE SCALES MAY BE USED.

J.U.L.I.E.
JOINT UTILITY LOCATION INFORMATION FOR EXCAVATION
1-800-892-0123
OR 811

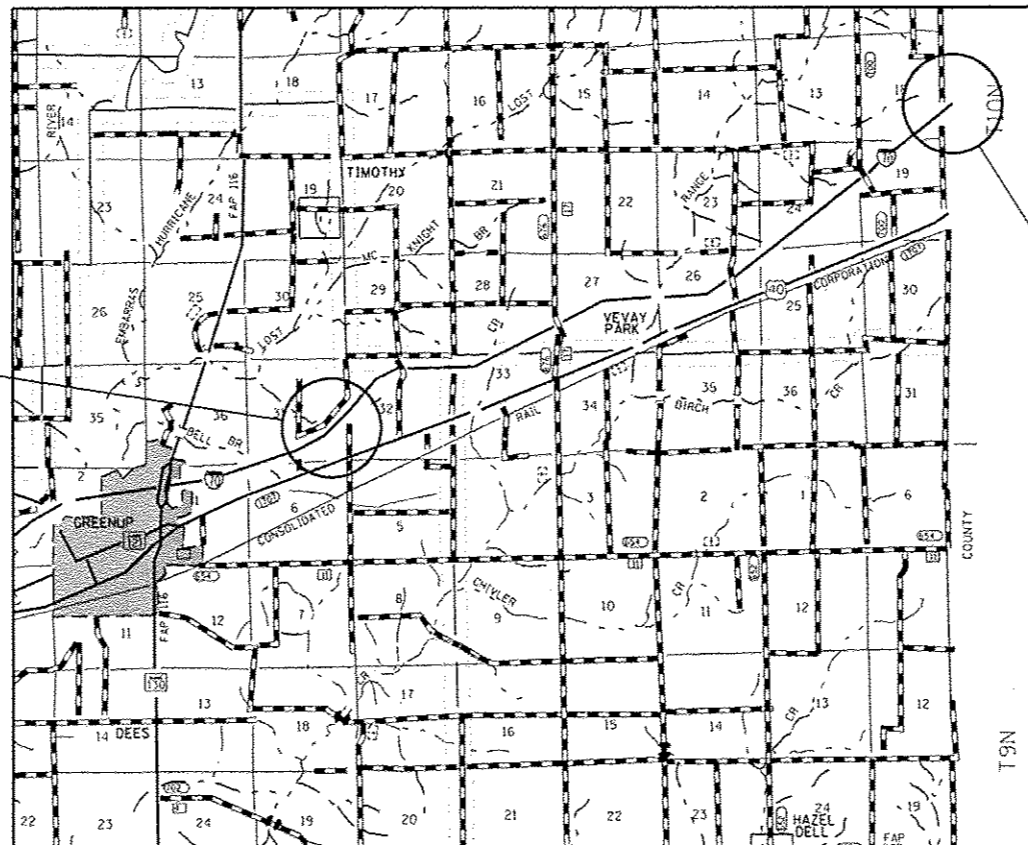
PROJECT ENGINEER: MARK DAUGHERTY
PROJECT MANAGER: BRIAN LEWIS
PHONE: (217)-342-8360
CONTRACT NO. 74416

GROSS LENGTH = 38,334 FT. = 7.26 MILE
NET LENGTH = 38,140 FT. = 7.22 MILE



LOCATION OF SECTION INDICATED THUS: - [black rectangle] -

PROJECT BEGINS:
STA. 292 + 20



PROJECT ENDS:
STA. 675 + 54

STATE OF ILLINOIS
DEPARTMENT OF TRANSPORTATION
DIVISION OF HIGHWAYS

SUBMITTED August 17 2012
Rozan K. Orskoll
DEPUTY DIRECTOR OF HIGHWAYS, REGION ENGINEER

October 5 2012
John D. Bouamelli, P.E.
ENGINEER OF DESIGN AND ENVIRONMENT

October 5 2012
William R. Frey, Jr.
DIRECTOR OF HIGHWAYS, CHIEF ENGINEER

**PRINTED BY THE AUTHORITY
OF THE STATE OF ILLINOIS**