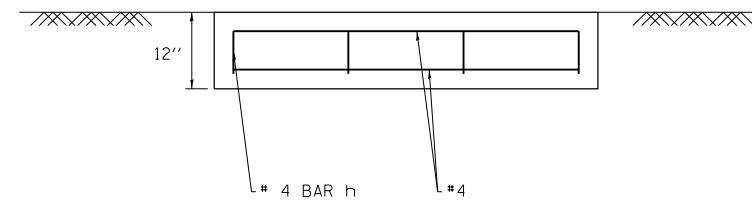
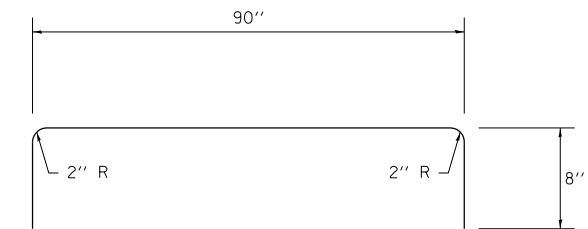


PLAN VIEW



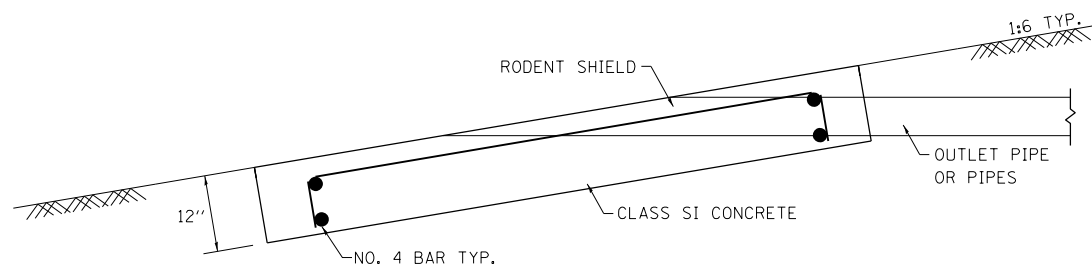
SECTION C-C



#4 h BAR

NOTES

- See Standard 601101 for details of rodent shields.
- The outlet pipe or pipes shall be located as close as possible to the center of the outlet protector.
- The last 10' of outlet pipe shall be schedule 40 PVC.
- The rebars may be cut or relocated to accommodate pipe.
- Cut outlet pipe on a bevel to match finished surface of surrounding PCC.



SECTION A-A

OUTLET PROTECTOR BILL OF MATERIALS

PAY ITEM	UNIT	QUANTITIES PER EACH OUTLET PROTECTOR	EASTBOUND QUANTITIES	WESTBOUND QUANTITIES	TOTAL QUANTITIES
CLASS SI CONCRETE (MISCELLANEOUS)	CU YD	1.5	228	147	375
REINFORCING BARS	LB	35.6	5411	3489	8900
RODENT SHIELDS	EACH	1	152	98	250

FILE NAME =	USER NAME = teasleyck	DESIGNED -	REVISED -
ct:\pw\work\p\idot\teasleyck\d0148656\0774416-sht-details.dgn		DRAWN -	REVISED -
PLOT SCALE = 100.0000' / 1in.		CHECKED -	REVISED -
PLOT DATE = 8/17/2012		DATE -	REVISED -

STATE OF ILLINOIS
DEPARTMENT OF TRANSPORTATION

OUTLET PROTECTOR DETAILS

SCALE: NA SHEET NO. OF SHEETS STA. TO STA.

F.A.I. RTE.	SECTION	COUNTY	TOTAL SHEETS	SHEET NO.
70	(18-47,48,49)R	CUMBERLAND	30	27
CONTRACT NO. 74416				
ILLINOIS FED. AID PROJECT				