

11-9-12 LETTING ITEM 038

STATE OF ILLINOIS
DEPARTMENT OF TRANSPORTATION
DIVISION OF HIGHWAYS

**PROPOSED
HIGHWAY PLANS**

FAI ROUTE 70 (I-70)
SECTION (18-47,48,49)R
PROJECT ACIM-070-4(141)123
RUBBLIZATION & OVERLAY
CUMBERLAND COUNTY

C-97-131-09

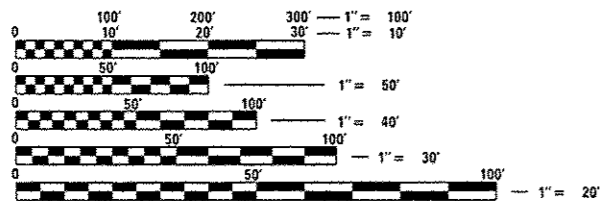
F.A.I. RTE.	SECTION	COUNTY	TOTAL SHEETS	SHEET NO.
70	(18-47,48,49)R	Cumberland	30	1
ILLINOIS			CONTRACT NO. 74416	

FOR INDEX OF SHEETS, SEE SHEET NO. 2

ADT = 19,300 (2010)

BRIDGE OMISSIONS

STRUCTURE #018-0051 & #018-0052
STA 486+23 TO STA 488+17

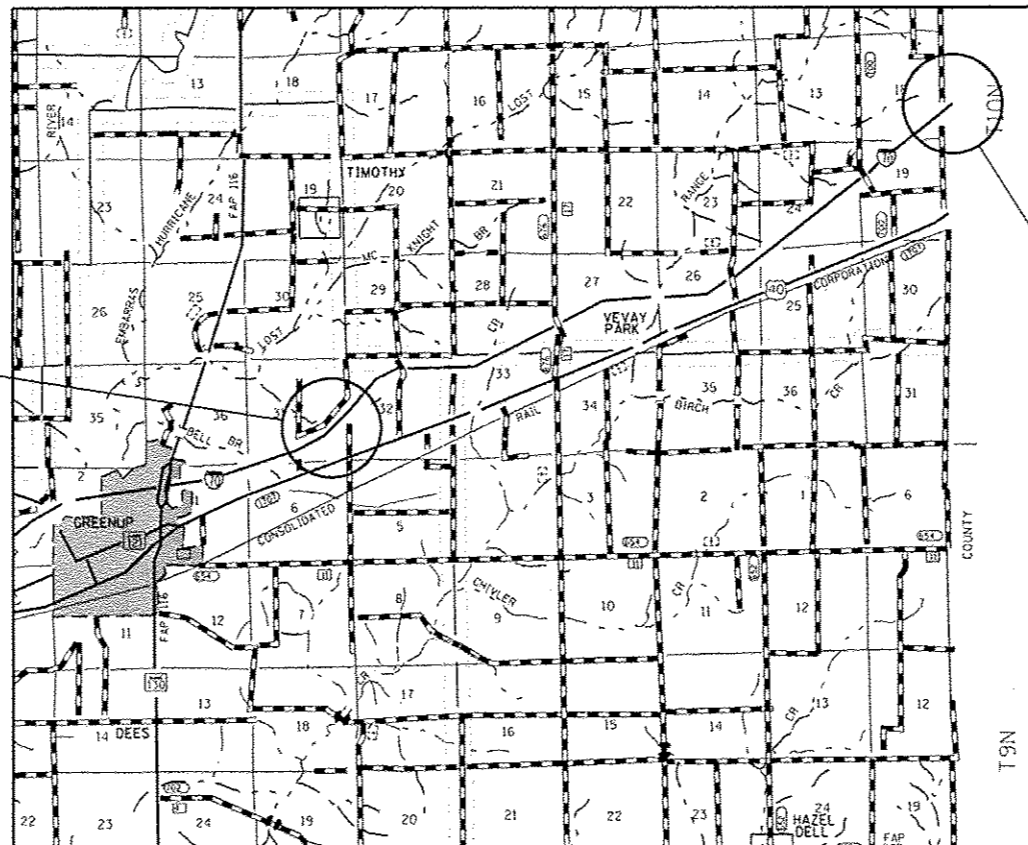
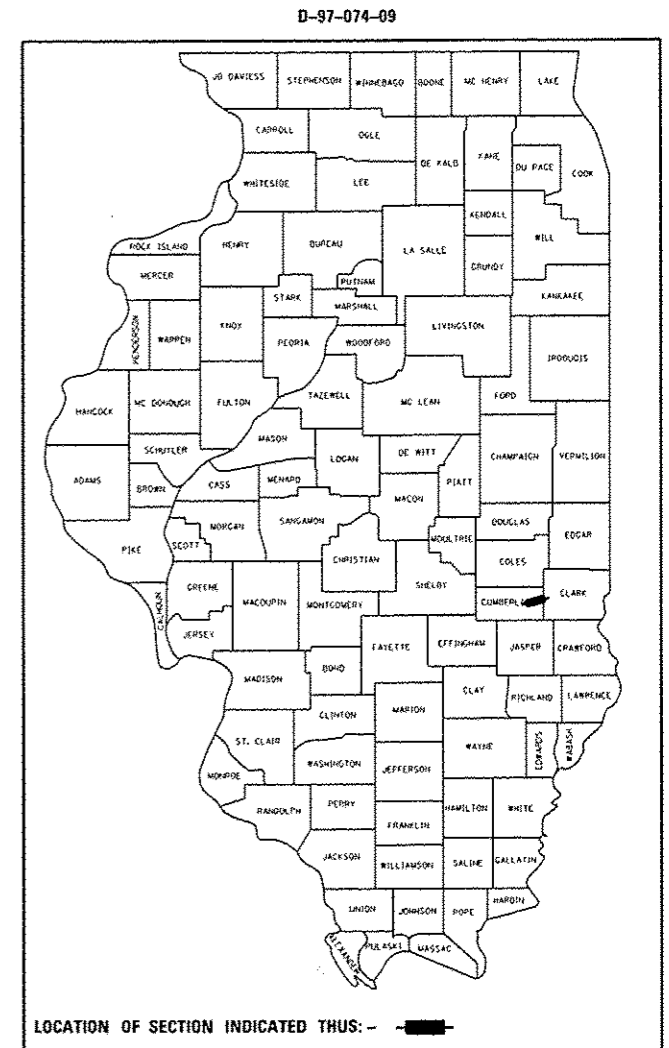


FULL SIZE PLANS HAVE BEEN PREPARED USING STANDARD ENGINEERING SCALES. REDUCED SIZED PLANS WILL NOT CONFORM TO STANDARD SCALES. IN MAKING MEASUREMENTS ON REDUCED PLANS, THE ABOVE SCALES MAY BE USED.

J.U.L.I.E.
JOINT UTILITY LOCATION INFORMATION FOR EXCAVATION
1-800-892-0123
OR 811

PROJECT ENGINEER: MARK DAUGHERTY
PROJECT MANAGER: BRIAN LEWIS
PHONE: (217)-342-8360
CONTRACT NO. 74416

GROSS LENGTH = 38,334 FT. = 7.26 MILE
NET LENGTH = 38,140 FT. = 7.22 MILE



PROJECT BEGINS:
STA. 292 + 20

PROJECT ENDS:
STA. 675 + 54

STATE OF ILLINOIS
DEPARTMENT OF TRANSPORTATION
DIVISION OF HIGHWAYS

SUBMITTED August 17 2012
Rozan K. Orskoll
DEPUTY DIRECTOR OF HIGHWAYS, REGION ENGINEER

October 5 2012
John D. Bouamelli, P.E.
ENGINEER OF DESIGN AND ENVIRONMENT

October 5 2012
William R. Frey
DIRECTOR OF HIGHWAYS, CHIEF ENGINEER

**PRINTED BY THE AUTHORITY
OF THE STATE OF ILLINOIS**

GENERAL NOTES

THIS SECTION SHALL BE CONSTRUCTED IN ACCORDANCE WITH THE PLANS, THE "STANDARD SPECIFICATIONS FOR ROAD AND BRIDGE CONSTRUCTION", ADOPTED JANUARY 1, 2012; THE "SUPPLEMENTAL SPECIFICATIONS AND RECURRING SPECIAL PROVISIONS" INDICATED ON THE CHECK SHEET, AND "THE SPECIAL PROVISIONS" INCLUDED IN THE PROPOSAL.

THE WORK INCLUDED IN SECTION (18-47, 48, 49)R CONSISTS OF HMA SURFACE REMOVAL, PCC PAVEMENT RUBBLIZATION, PAVEMENT REMOVAL, FULL-DEPTH HMA PAVEMENT CONSTRUCTION, RESURFACING WITH HMA AND OTHER WORK NECESSARY TO COMPLETE THE SECTION.

ALL DISTURBED AREAS WITHIN THE CONSTRUCTION LIMITS SHALL BE SEEDED AND MULCHED. SEEDING SHALL BE CLASS 2 IN ACCORDANCE WITH THE APPLICABLE ARTICLES OF SECTION 250 OF THE STANDARD SPECIFICATIONS. THE COST FOR SEEDING AREAS WITH TREE REMOVAL, ACRES SHALL BE PAID FOR AS SEEDING, CLASS 2 SPECIAL. THE COST OF SEEDING ALL OTHER DISTURBED AREAS SHALL BE INCLUDED IN THE BID PRICE FOR THE ITEMS CAUSING THE DISTURBANCE.

THE LOCATIONS AND/OR DEPTHS OF UNDERGROUND UTILITIES SHOWN HAVE BEEN TAKEN FROM INFORMATION FURNISHED BY THE UTILITY OWNERS AND MUST BE CONSIDERED APPROXIMATE. FIELD MARKINGS OF FACILITIES IN CRITICAL AREAS MAY BE OBTAINED BY PROVIDING A MINIMUM OF 96 HOURS ADVANCE NOTICE THROUGH THE J.U.L.I.E. SYSTEM BY CALLING 800-892-0123.

THE CONTRACTOR SHALL PROVIDE INTERNET ACCESS TO THE BITUMINOUS PLANT QUALITY CONTROL LAB SO THAT BITUMINOUS PLANT REPORTS CAN BE E-MAILED TO THE DISTRICT HEADQUARTERS. THIS WORK WILL NOT BE PAID FOR SEPARATELY BUT SHALL BE INCLUDED IN THE UNIT PRICES FOR OTHER ITEMS IN THE CONTRACT.

IN ADDITION TO THE REQUIREMENTS IN ARTICLE 701.15(j), A LAPTOP COMPUTER SHALL BE SUPPLIED BY THE CONTRACTOR.

ALL GUARDRAIL AND SAND BARRELS REMOVED AS PART OF THIS PROJECT SHALL BE DELIVERED TO THE GREENUP IDOT OPERATIONS YARD LOCATED WEST OF IL 130 IN GREENUP.

RUBBLIZATION SHALL BE BY METHOD 1 AS DESCRIBED IN THE SPECIAL PROVISIONS.

THE RESIDENT ENGINEER SHALL BE THE SOLE JUDGE CONCERNING THE CURING TIME FOR THE VARIOUS BITUMINOUS LIFTS.

THE MATERIAL USED FOR BITUMINOUS MATERIALS (PRIME COAT) SHALL BE SS-1HP, SS-1H, OR RC-70 APPLIED AT THE RATE DIRECTED BY THE ENGINEER. THE CONTRACTOR WILL BE REQUIRED TO FOG COAT ALL BINDER LIFTS WITH SS-1HP. THE TOP OF THE RUBBLIZED PAVEMENT WILL NOT BE PRIMED.

USE OF A MATERIAL TRANSFER DEVICE WILL NOT BE PERMITTED PRIOR TO PLACING TWO LIFTS OF HMA BINDER COURSE, IL-19.0, N90. A LOADED MATERIAL TRANSFER DEVICE MAY CROSS STRUCTURES 018-0051 AND 018-0052.

THE FACTOR USED TO COMPUTE THE QUANTITY OF THE STONE MATRIX ASPHALT SURFACE COURSE IS 130 POUNDS PER SQUARE YARD PER INCH AND 112 POUNDS PER SQUARE YARD PER INCH FOR ALL OTHER MIXES.

AGGREGATE FOR AGGREGATE SHOULDERS SHALL BE CRUSHED STONE OR CRUSHED CONCRETE.

COST OF REMOVAL OF EXISTING GUARD POSTS SHALL BE INCLUDED IN THE UNIT PRICE FOR GUARD POST.

TEMPORARY RAMPS SHALL BE CONSTRUCTED AT THE RATE OF 1:80. COST OF REMOVAL OF TEMPORARY RAMP SHALL BE INCLUDED IN THE UNIT PRICE FOR TEMPORARY RAMP.

THE FOLLOWING MIXTURE REQUIREMENTS ARE APPLICABLE TO THIS PROJECT:

APPLICATION	AC/PG	DESIGN AIR VOIDS	MIXTURE COMPOSITION	FRICTION AGGREGATE
POLYMERIZED HMA SURFACE COURSE, SMA, N80	SBS PG 76-22	4.0% @ N=80	IL - 12.5	N/A
POLYMERIZED HMA SURFACE COURSE, MIX "D", N105	SBS PG 70-22	4.0% @ N=105	IL - 9.5	N/A
POLYMERIZED HMA BINDER COURSE, IL-19.0 FG, N105	SBS PG 70-22	4.0% @ N=105	IL - 19.0 FG	N/A
HMA BINDER COURSE, IL-19.0, N90	PG 64-22	4.0% @ N=90	IL - 19.0	N/A
HMA BINDER COURSE, IL-19.0L, N30	PG 64-22	4.0% @ N=30	IL - 19.0L	N/A
HMA SHOULDERS	PG 64-22	4.0% @ N=30	IL - 9.5L	N/A
HMA SHOULDERS, 10" AND 13"	PG 64-22	4.0% @ N=70	IL - 19.0	N/A

INDEX OF SHEETS

SHEET NO	TITLE
1	COVER SHEET
2	GENERAL NOTES, INDEX OF SHEETS
3-6	SUMMARY OF QUANTITIES
7	EXISTING TYPICAL SECTIONS
8-9	PROPOSED TYPICAL SECTIONS
10	TREE REMOVAL SCHEDULE
11	PAVING SCHEDULE
12	PAVEMENT MARKING SCHEDULE
13	MISCELLANEOUS SCHEDULES
14-16	STAGE CONSTRUCTION DETAILS AND SCHEDULE
17	BUTT-JOINT DETAILS
18	TRANSITION DETAILS
19-25	PLAN SHEETS
26	MEDIAN CROSS OVER AND WOOD POST BARRIER DETAIL
27	OUTLET PROTECTOR DETAIL
28	MISCELLANEOUS DETAILS
29-30	TYPICAL APPLICATIONS OF INTERSTATE PAVEMENT MARKING

THE FOLLOWING STANDARDS ARE A PART OF THESE PLANS AND ARE INCLUDED FOLLOWING THE LAST NUMBERED SHEET OF THE PLANS.

000001-06	STANDARD SYMBOLS, ABBREVIATIONS, AND PATTERNS
001001-02	AREAS OF REINFORCEMENT BARS
001006	DECIMAL OF AN INCH AND OF A FOOT
601001-04	SUB-SURFACE DRAINS
601101-01	CONCRETE HEADWALL FOR PIPE DRAIN
630001-10	STEEL PLATE BEAM GUARDRAIL
631031-10	TRAFFIC BARRIER TERMINAL, TYPE 6
631033-04	TRAFFIC BARRIER TERMINAL, TYPE 6B
635001-01	DELINEATORS
635006-03	REFLECTOR AND TERMINAL MARKER PLACEMENT
642001-02	SHOULDER RUMBLE STRIPS, 16 IN.
643001	SAND MODULE IMPACT ATTENUATORS
701101-02	OFF-ROAD OPERATIONS, MULTILANE, 15' TO 24" FROM PAVEMENT EDGE
701106-02	OFF-ROAD OPERATIONS, MULTILANE, MORE THAN 15' AWAY
701400-05	APPROACH TO LANE CLOSURE, FREEWAY/EXPRESSWAY
701401-06	LANE CLOSURE, FREEWAY/EXPRESSWAY
701402-09	LANE CLOSURE, FREEWAY/EXPRESSWAY, WITH BARRIER
701406-06	LANE CLOSURE, FREEWAY/EXPRESSWAY, DAY OPERATIONS ONLY
701426-04	LANE CLOSURE, MULTILANE, INTERMITTENT OR MOVING OPERATIONS
701901-02	TRAFFIC CONTROL DEVICES
704001-07	TEMPORARY CONCRETE BARRIER
720011-01	METAL POSTS FOR SIGNS, MARKERS AND DELINEATORS
780001-03	TYPICAL PAVEMENT MARKINGS
781001-03	TYPICAL APPLICATIONS RAISED REFLECTIVE PAVEMENT MARKERS

FILE NAME =	USER NAME = teasleych	DESIGNED -	REVISED -	STATE OF ILLINOIS DEPARTMENT OF TRANSPORTATION	INDEX OF SHEETS AND GENERAL NOTES		F.A.I. RATE	SECTION	COUNTY	TOTAL SHEETS	SHEET NO.
c:\p-work\pindoc\teasleych\08149656\07	4416-shr-index.dgn	DRAWN -	REVISED -		70	(18-47,48,49)R	CUMBERLAND	30	2		
	PLOT SCALE = 100.0000 / in.	CHECKED -	REVISED -		SCALE: NA SHEET OF SHEETS STA. TO STA.		CONTRACT NO. 74416		ILLINOIS FED. AID PROJECT		
	PLOT DATE = 8/17/2012	DATE -	REVISED -								

SUMMARY OF QUANTITIES			TOTAL QUANTITIES	CONSTRUCTION TYPE CODE		
CODE NO	ITEM	UNIT		0004 90% FEDERAL 10% STATE		
X0327487	TRIAXIAL GEOGRID REINFORCEMENT, TYPE I	SO YD	15467	15467		
20100110	TREE REMOVAL (6 TO 15 UNITS DIAMETER)	UNIT	2362	2362		
20100210	TREE REMOVAL (OVER 15 UNITS DIAMETER)	UNIT	1758	1758		
20100500	TREE REMOVAL, ACRES	ACRE	0.75	0.75		
28100703	STONE DUMPED RIPRAP, CLASS A2	SO YD	6898	6898		
35501303	HOT-MIX ASPHALT BASE COURSE, 4 3/4"	SO YD	12800	12800		
35501335	HOT-MIX ASPHALT BASE COURSE, 12 3/4"	SO YD	2667	2667		
40600100	BITUMINOUS MATERIALS (PRIME COAT)	GALLON	45484	45484		
40600895	CONSTRUCTING TEST STRIP	EACH	2	2		
40600982	HOT-MIX ASPHALT SURFACE REMOVAL - BUTT JOINT	SO YD	10511	10511		
40600990	TEMPORARY RAMP	SO YD	474	474		
40603090	HOT-MIX ASPHALT BINDER COURSE, IL-19.0, N90	TON	62342	62342		
40603100	HOT-MIX ASPHALT BINDER COURSE, IL-19.0L, N30	TON	16132	16132		
40603153	POLYMERIZED HOT-MIX ASPHALT SURFACE COURSE, STONE MATRIX ASPHALT, N80	TON	26444	26444		

SUMMARY OF QUANTITIES			TOTAL QUANTITIES	CONSTRUCTION TYPE CODE		
CODE NO	ITEM	UNIT		0004 90% FEDERAL 10% STATE		
40603244	POLYMERIZED HOT-MIX ASPHALT BINDER COURSE, IL-19.0, FG, N105	TON	23002	23002		
40603550	POLYMERIZED HOT-MIX ASPHALT SURFACE COURSE, MIX "D", N105	TON	3629	3629		
44000100	PAVEMENT REMOVAL	SO YD	15467	15467		
44000151	HOT-MIX ASPHALT SURFACE REMOVAL, 1/2"	SO YD	67436	67436		
44000157	HOT-MIX ASPHALT SURFACE REMOVAL, 2"	SO YD	10311	10311		
44000175	HOT-MIX ASPHALT SURFACE REMOVAL, 6 1/2"	SO YD	140293	140293		
44004250	PAVED SHOULDER REMOVAL	SO YD	70600	70600		
48102100	AGGREGATE WEDGE SHOULDERS, TYPE B	TON	19724	19724		
48203037	HOT-MIX ASPHALT SHOULDERS, 10"	SO YD	38060	38060		
48203049	HOT-MIX ASPHALT SHOULDERS, 13"	SO YD	32540	32540		
48203100	HOT-MIX ASPHALT SHOULDERS	TON	17612	17612		
50800105	REINFORCEMENT BARS	POUND	8900	8900		
60100078	SHOULDER REMOVAL AND REPLACEMENT 12 1/2"	FOOT	65962	65962		

FILE NAME :	USER NAME : teasleyck	DESIGNED -	REVISED -
c:\pwwork\pwwork\teasleyck\d0148656\07	4416\shl-sea.dgn	DRAWN -	REVISED -
	PLOT SCALE = 100.0000 1/16"	CHECKED -	REVISED -
	PLOT DATE = 8/17/2012	DATE -	REVISED -

STATE OF ILLINOIS
DEPARTMENT OF TRANSPORTATION

SUMMARY OF QUANTITIES

SCALE: NA SHEET OF SHEETS STA. TO STA.

F.A.I. RTE.	SECTION	COUNTY	TOTAL SHEETS	SHEET NO.
70	(18-47,48,49)R	CUMBERLAND	30	3
CONTRACT NO. 74416				
ILLINOIS FED. AID PROJECT				

SUMMARY OF QUANTITIES			TOTAL QUANTITIES	CONSTRUCTION TYPE CODE		
CODE NO	ITEM	UNIT		0004 90% FEDERAL 10% STATE		
60107700	PIPE UNDERDRAINS 6"	FOOT	118572	118572		
60108200	PIPE UNDERDRAINS 6" (SPECIAL)	FOOT	5796	5796		
*63000001	STEEL PLATE BEAM GUARDRAIL, TYPE A, 6 FOOT POSTS	FOOT	2025	2025		
*63100085	TRAFFIC BARRIER TERMINAL, TYPE 6	EACH	4	4		
*63100089	TRAFFIC BARRIER TERMINAL, TYPE 6B	EACH	8	8		
*63100167	TRAFFIC BARRIER TERMINAL, TYPE 1 (SPECIAL) TANGENT	EACH	12	12		
63200310	GUARDRAIL REMOVAL	FOOT	4316	4316		
63400105	GUARD POSTS	EACH	196	196		
63500105	DELINEATORS	EACH	276	276		
64200116	SHOULDER RUMBLE STRIPS, 16 INCH	FOOT	159560	159560		
64300450	IMPACT ATTENUATORS (NON-REDIRECTIVE), TEST LEVEL 3	EACH	8	8		
67000400	ENGINEER'S FIELD OFFICE, TYPE A	CAL MO	9	9		
67100100	MOBILIZATION	L SUM	1	1		

SUMMARY OF QUANTITIES			TOTAL QUANTITIES	CONSTRUCTION TYPE CODE		
CODE NO	ITEM	UNIT		0004 90% FEDERAL 10% STATE		
70100207	TRAFFIC CONTROL AND PROTECTION, STANDARD 701402	EACH	8	8		
70100700	TRAFFIC CONTROL AND PROTECTION, STANDARD 701406	L SUM	1	1		
70103815	TRAFFIC CONTROL SURVEILLANCE	CAL DA	20	20		
*70300100	SHORT TERM PAVEMENT MARKING	FOOT	30262	30262		
*70300220	TEMPORARY PAVEMENT MARKING - LINE 4"	FOOT	153336	153336		
*70300240	TEMPORARY PAVEMENT MARKING - LINE 6"	FOOT	19167	19167		
70301000	WORK ZONE PAVEMENT MARKING REMOVAL	SQ FT	103732	103732		
70400100	TEMPORARY CONCRETE BARRIER	FOOT	7600	7600		
70400200	RELOCATE TEMPORARY CONCRETE BARRIER	FOOT	7600	7600		
*78004230	PREFORMED PLASTIC PAVEMENT MARKING, TYPE B- INVAID- LINE 6"	FOOT	19,070	19,070		
*78009004	MODIFIED URETHANE PAVEMENT MARKING - LINE 4"	FOOT	153336	153336		
*78009006	MODIFIED URETHANE PAVEMENT MARKING - LINE 6"	FOOT	97	97		
*78100100	RAISED REFLECTIVE PAVEMENT MARKER	EACH	1907	1907		
*78100105	RAISED REFLECTIVE PAVEMENT MARKER (BRIDGE)	EACH	12	12		

* SPECIALTY ITEM

FILE NAME *	USER NAME *	DESIGNED -	REVISOR -	STATE OF ILLINOIS DEPARTMENT OF TRANSPORTATION		SUMMARY OF QUANTITIES		F.A.I. RTE.	SECTION	COUNTY	TOTAL SHEETS	SHEET NO.	
c:\p\work\p\dott\teasleych\40148056\07	teasleych	DRAWN -	REVISOR -					70	(18-47,48,49)R	CUMBERLAND	30	4	
		CHECKED -	REVISOR -										
		DATE -	REVISOR -										
PLOT SCALE * 1/8"=1'-0"				SCALE: NA				SHEET OF SHEETS		STA. TO STA.		ILLINOIS FED. AID PROJECT	
PLOT DATE * 8/17/2012												CONTRACT NO. 74416	

SUMMARY OF QUANTITIES			TOTAL QUANTITIES	CONSTRUCTION TYPE CODE		
CODE NO	ITEM	UNIT		0004 90% FEDERAL 10% STATE		
* 78200410	GUARDRAIL MARKERS, TYPE A	EACH	50	50		
* 78201000	TERMINAL MARKER - DIRECT APPLIED	EACH	12	12		
78300100	PAVEMENT MARKING REMOVAL	SO FT	21531	21531		
* A2001016	TREE, ACER RUBRUM (RED MAPLE), 2" CALIPER, BALLED AND BURLAPPED	EACH	50	50		
* A2001716	TREE, ACER SACCHARUM (SUGAR MAPLE), 2" CALIPER, BALLED AND BURLAPPED	EACH	15	15		
* A2002316	TREE, BETULA NIGRA (RIVER BIRCH), 2" CALIPER, BALLED AND BURLAPPED	EACH	21	21		
* A2002516	TREE, CARPINUS CAROLINIANA (AMERICAN HORNBEAM), 2" CALIPER, BALLED AND BURLAPPED	EACH	10	10		
* A2002916	TREE, CELTIS OCCIDENTALIS (COMMON HACKBERRY), 2" CALIPER, BALLED AND BURLAPPED	EACH	10	10		
* A2005816	TREE, PLATANUS OCCIDENTALIS (SYCAMORE), 2" CALIPER, BALLED AND BURLAPPED	EACH	25	25		
* A2006516	TREE, QUERCUS BICOLOR (SWAMP WHITE OAK), 2" CALIPER, BALLED AND BURLAPPED	EACH	20	20		

SUMMARY OF QUANTITIES			TOTAL QUANTITIES	CONSTRUCTION TYPE CODE		
CODE NO	ITEM	UNIT		0004 90% FEDERAL 10% STATE		
* A2006916	TREE, QUERCUS PALUSTRIS (PIN OAK), 2" CALIPER, BALLED AND BURLAPPED	EACH	30	30		
* A2007616	TREE, TAXODIUM DISTICHUM (COMMON BALD CYPRESS), 2" CALIPER, BALLED AND BURLAPPED	EACH	30	30		
* B2001116	TREE, CERCIS CANADENSIS (EASTERN REDBUD), 2" CALIPER, TREE FORM, BALLED AND BURLAPPED	EACH	50	50		
* D2002972	EVERGREEN, PINUS STROBUS (EASTERN WHITE PINE), 6' HEIGHT, BALLED AND BURLAPPED	EACH	50	50		
● X0320157	CLEANING UNDERDRAIN OUTLETS	EACH	62	62		
X0322278	RODENT SHIELDS	EACH	250	250		
X0323583	SPEED INDICATOR SIGN	CAL DA	270	270		
X0325279	CLASS SI CONCRETE (MISCELLANEOUS)	CU YD	375	375		
X2020410	EARTH EXCAVATION (SPECIAL)	CU YD	7,041	7,041		
* X2501000	SEEDING, CLASS 2 (SPECIAL)	ACRE	0.75	0.75		
X3112900	SUBBASE GRANULAR MATERIAL (SPECIAL)	CU YD	6,874	6,874		
X4063500	PRELIMINARY TEST STRIP	EACH	1	1		

* SPECIALTY ITEM ● NON-PARTICIPATING (100% STATE)

FILE NAME =	USER NAME = teanloyck	DESIGNED -	REVISED -	STATE OF ILLINOIS DEPARTMENT OF TRANSPORTATION	SUMMARY OF QUANTITIES			F.A.I. RTE.	SECTION	COUNTY	TOTAL SHEETS	SHEET NO.
c:\pwwork\pwwork\teanloyck\08148656-07	4416-ahf-100.dgn	DRAWN -	REVISED -					70	(18-47,48,49)R	CUMBERLAND	30	5
	PLOT SCALE = 1/8"=1'-0"	CHECKED -	REVISED -		SCALE: NA SHEET OF SHEETS STA. TO STA.			CONTRACT NO. 74416				
	PLOT DATE = 8/17/2012	DATE -	REVISED -					ILLINOIS FED. AID PROJECT				

3195 15 01A

SUMMARY OF QUANTITIES			TOTAL QUANTITIES	CONSTRUCTION TYPE CODE		
CODE NO	ITEM	UNIT		0004 90% FEDERAL 10% STATE		
X4401198	HOT-MIX ASPHALT SURFACE REMOVAL, VARIABLE DEPTH	SO YD	1467	1467		
X5012650	CONCRETE HEADWALL REMOVAL SPECIAL	EACH	250	250		
X6350120	DELINEATOR REMOVAL	EACH	276	276		
X7010805	TRAFFIC CONTROL AND PROTECTION, STANDARD 701401 (SPECIAL)	L SUM	1	1		
X7015005	CHANGEABLE MESSAGE SIGN	CAL DA	14	14		
*X7830070	GROOVING FOR RECESSED PAVEMENT MARKING 5"	FOOT	153336	153336		
*X7830074	GROOVING FOR RECESSED PAVEMENT MARKING 7"	FOOT	97	97		
Z0030250	IMPACT ATTENUATORS, TEMPORARY (NON-REDIRECTIVE), TEST LEVEL 3	EACH	8	8		
Z0030350	IMPACT ATTENUATORS, RELOCATE (NON-REDIRECTIVE), TEST LEVEL 3	EACH	8	8		
Z0034105	MATERIAL TRANSFER DEVICE	TON	49967	49967		
Z0055605	RUBBLIZING PORTLAND CEMENT CONCRETE PAVEMENT	SO YD	130960	130960		
Z0056220	SAND MODULE IMPACT ATTENUATOR TO BE REMOVED	EACH	8	8		

SUMMARY OF QUANTITIES			TOTAL QUANTITIES	CONSTRUCTION TYPE CODE		
CODE NO	ITEM	UNIT		0004 90% FEDERAL 10% STATE		
Z0076600	TRAINEES	HOUR	1500	1500		

* SPECIALTY ITEM † 0042

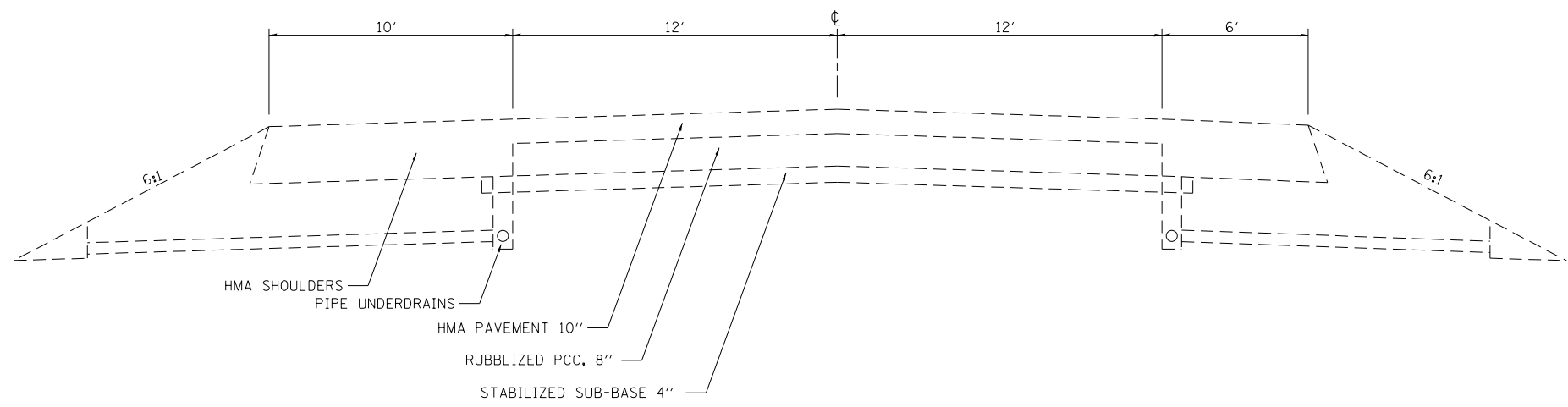
FILE NAME :	USER NAME : teoslayck	DESIGNED -	REVISED -
c:\pwwork\pwwork\teoslayck\d0148056-072	**16-shr-soq.dgn	DRAWN -	REVISED -
	PLOT SCALE : 1/8"=1'-0"	CHECKED -	REVISED -
	PLOT DATE : 8/17/2012	DATE -	REVISED -

STATE OF ILLINOIS
DEPARTMENT OF TRANSPORTATION

SUMMARY OF QUANTITIES

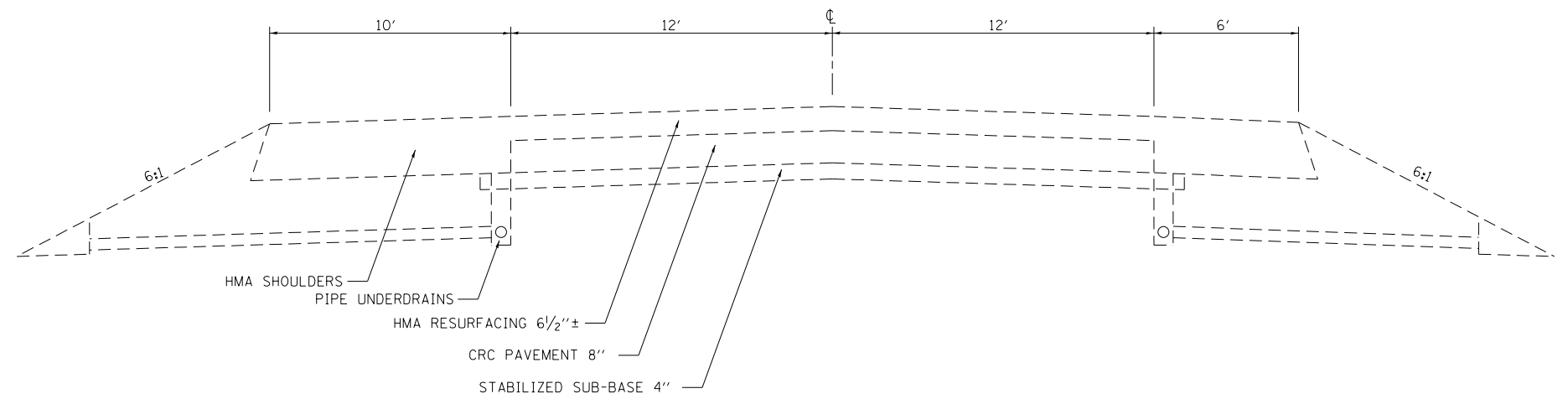
SCALE: NA SHEET OF SHEETS STA. TO STA.

F.A.I. RTE.	SECTION	COUNTY	TOTAL SHEETS	SHEET NO.
70	118-47,48,49IR	CUMBERLAND	30	6
CONTRACT NO. 74416				
ILLINOIS FED. AID PROJECT				



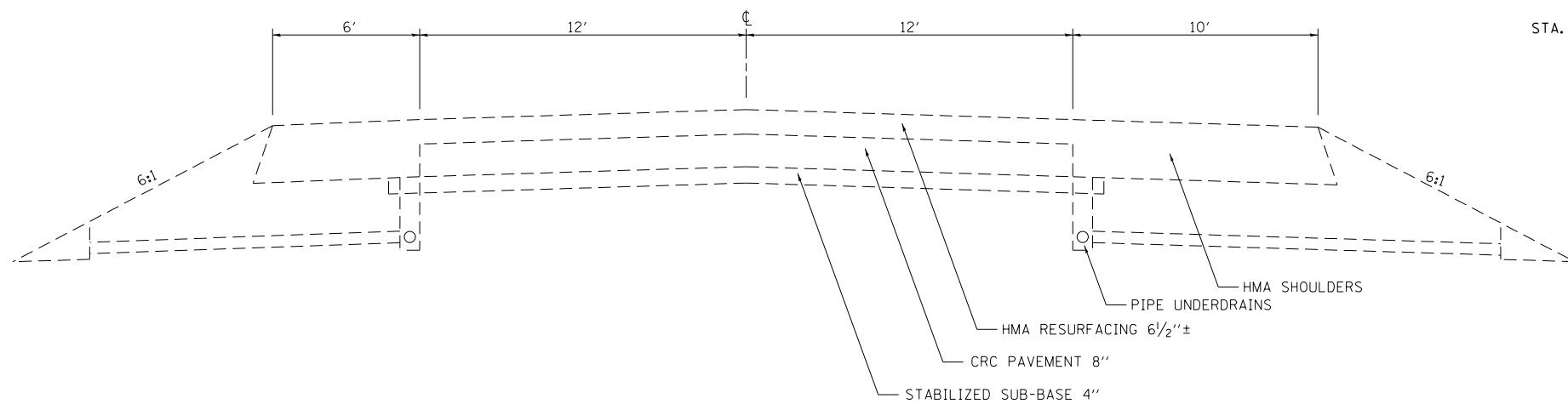
EXISTING TYPICAL SECTION

WESTBOUND
STA. 292+20 TO STA. 457+80



EXISTING TYPICAL SECTION

WESTBOUND
STA. 457+80 TO STA. 675+54



EXISTING TYPICAL SECTION

EASTBOUND

NOTE: NOT DRAWN TO SCALE

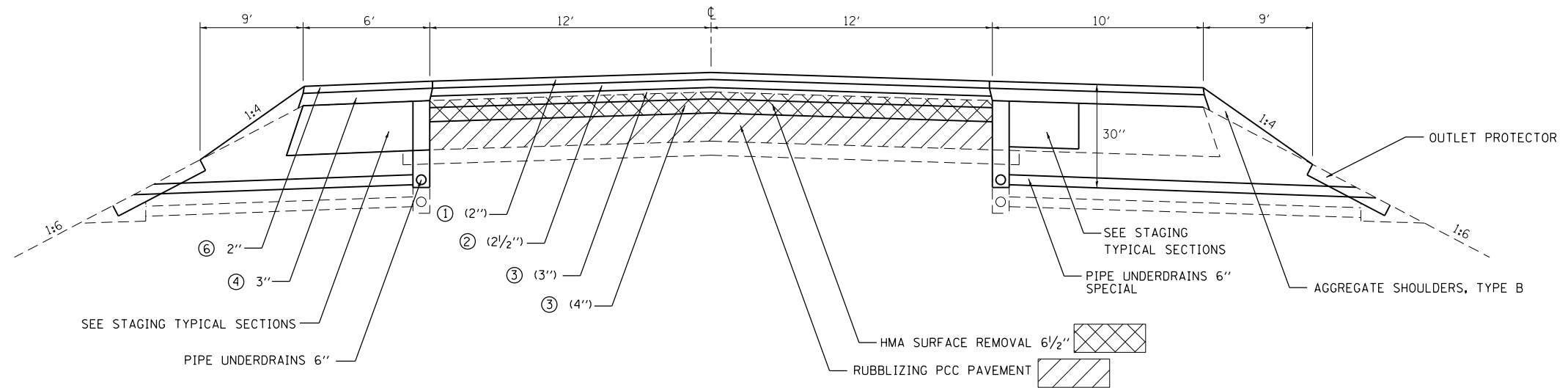
FILE NAME =	USER NAME = teasleyck	DESIGNED -	REVISED -
ct:\pw\work\p\id\teasleyck\0148656\07	4416-sht-typicals.dgn	DRAWN -	REVISED -
	PLOT SCALE = 100.0000' / 1in.	CHECKED -	REVISED -
	PLOT DATE = 8/17/2012	DATE -	REVISED -

**STATE OF ILLINOIS
DEPARTMENT OF TRANSPORTATION**

EXISTING TYPICAL SECTIONS

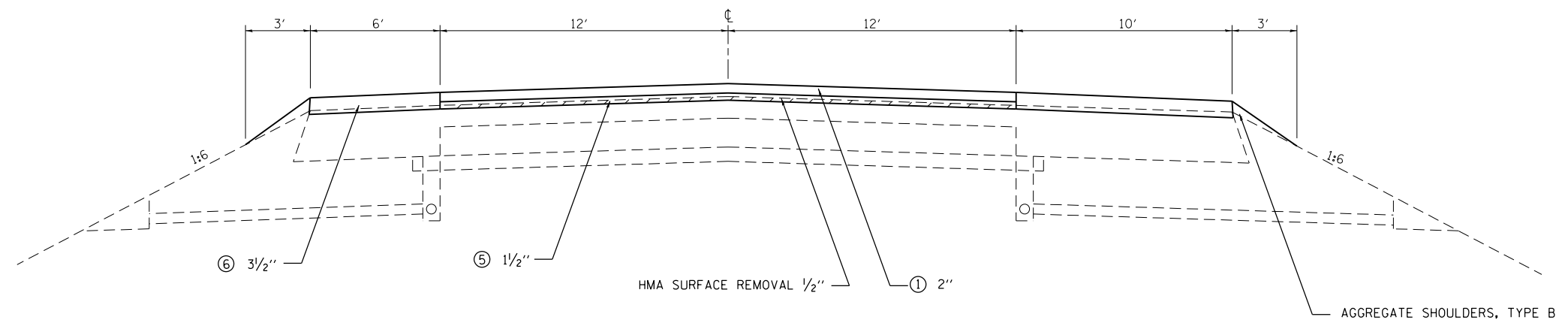
SCALE: NA SHEET OF SHEETS STA. TO STA.

F.A.I. RTE.	SECTION	COUNTY	TOTAL SHEETS	SHEET NO.
70	(18-47,48,49)R	CUMBERLAND	30	7
				CONTRACT NO. 74416
ILLINOIS FED. AID PROJECT				



PROPOSED TYPICAL SECTION

E. B. STA. 292+20 TO STA. 344+62	W. B. STA. 454+50 TO STA. 482+93
E. B. STA. 352+62 TO STA. 430+30	W. B. STA. 491+47 TO STA. 525+94
E. B. STA. 438+30 TO STA. 482+93	W. B. STA. 533+94 TO STA. 617+42
E. B. STA. 491+47 TO STA. 525+68	W. B. STA. 625+42 TO STA. 675+54
E. B. STA. 533+68 TO STA. 617+42	
E. B. STA. 625+42 TO STA. 672+24	



PROPOSED TYPICAL SECTION

W. B. 292+20 TO STA. 454+50

- ① POLYMERIZED HMA SURFACE COURSE, STONE MATRIX ASPHALT, N80
- ② POLYMERIZED HMA BINDER COURSE, IL-19.0 FG, N105
- ③ HMA BINDER COURSE, IL-19.0, N90
- ④ HMA BINDER COURSE, IL-19.0 L, N30
- ⑤ POLYMERIZED HMA SURFACE COURSE, MIX "D", N105
- ⑥ HMA SHOULDERS

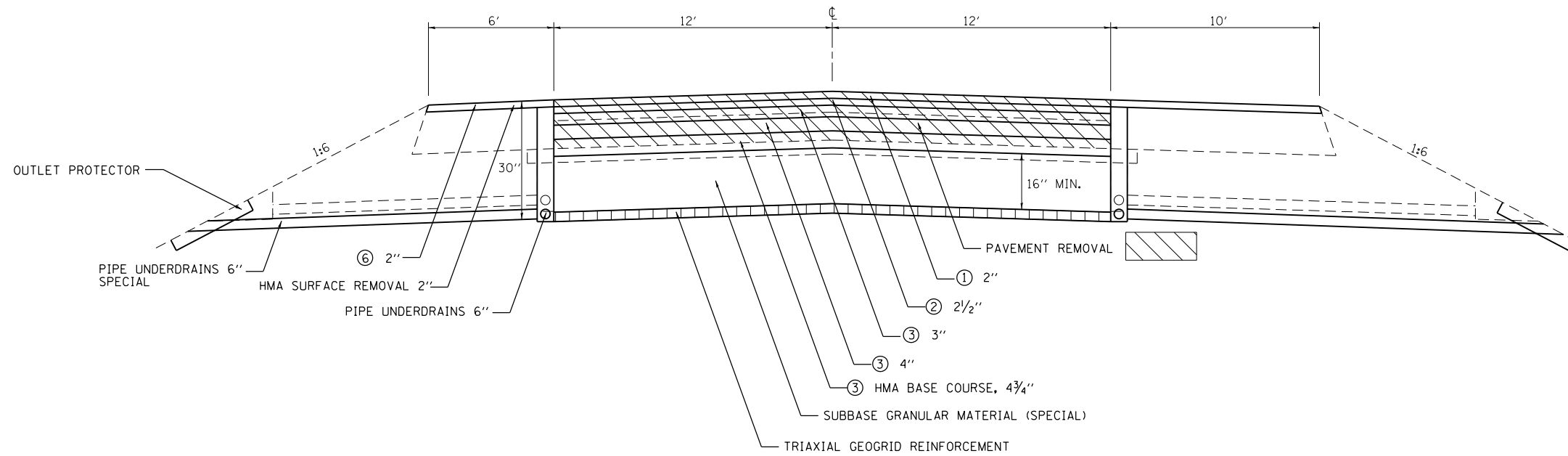
FILE NAME =	USER NAME = teasleyck	DESIGNED -	REVISED -
ct:\pw\work\p1dot\teasleyck\d0148656\07	4416-sht-typicals.dgn	DRAWN -	REVISED -
	PLOT SCALE = 100.0000' / in.	CHECKED -	REVISED -
	PLOT DATE = 8/17/2012	DATE -	REVISED -

**STATE OF ILLINOIS
DEPARTMENT OF TRANSPORTATION**

**PROPOSED TYPICAL SECTIONS
MAINLINE**

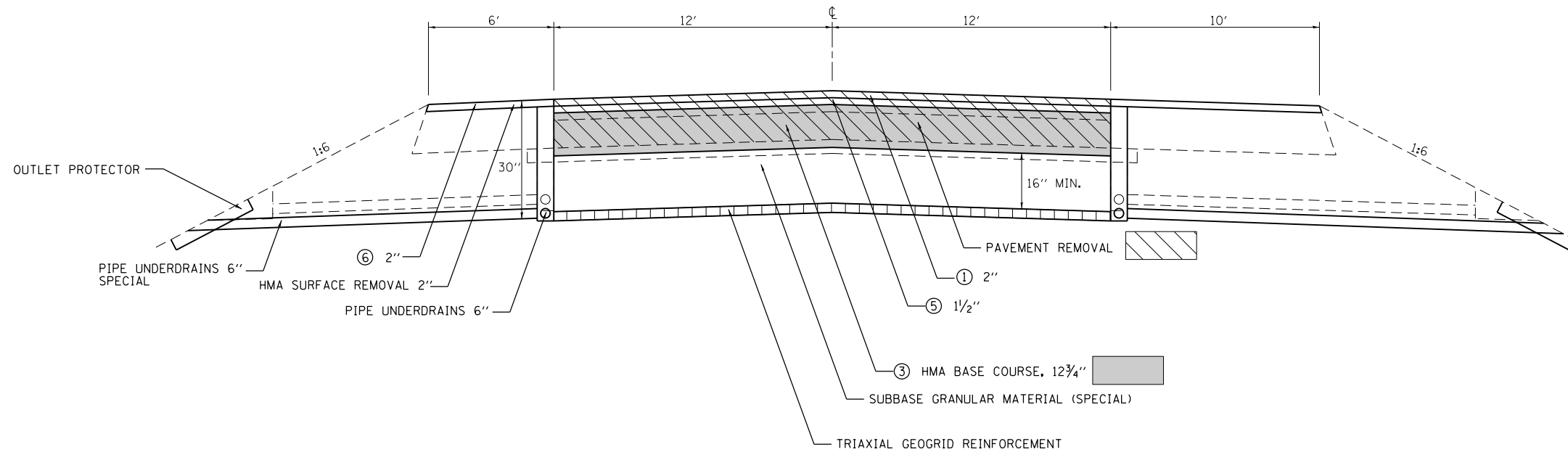
SCALE: SHEET NO. OF SHEETS STA. TO STA.

F.A. RTE.	SECTION	COUNTY	TOTAL SHEETS	SHEET NO.
70	(18-47,48,49)R	CUMBERLAND	30	8
CONTRACT NO. 74416			ILLINOIS FED. AID PROJECT	



PROPOSED TYPICAL SECTION

E. B. STA. 344+62 TO STA. 352+62 W. B. STA. 525+94 TO STA. 533+94
 E. B. STA. 430+30 TO STA. 438+30 W. B. STA. 617+42 TO STA. 625+42
 E. B. STA. 525+68 TO STA. 533+68
 E. B. STA. 617+42 TO STA. 625+42



PROPOSED TYPICAL SECTION

W. B. STA. 346+38 TO STA. 351+38
 W. B. STA. 432+05 TO STA. 437+05

- ① POLYMERIZED HMA SURFACE COURSE, STONE MATRIX ASPHALT, N80
- ② POLYMERIZED HMA BINDER COURSE, IL-19.0 FG, N105
- ③ HMA BINDER COURSE, IL-19.0, N90
- ④ HMA BINDER COURSE, IL-19.0 L, N30
- ⑤ POLYMERIZED HMA SURFACE COURSE, MIX "D", N105
- ⑥ HMA SHOULDERS

FILE NAME =	USER NAME = teasleyck	DESIGNED -	REVISED -
ct:\pwork\pwork\teasleyck\d0148656\07	4416-sht-typicals.dgn	DRAWN -	REVISED -
	PLOT SCALE = 100.0000' / 1" =	CHECKED -	REVISED -
	PLOT DATE = 8/17/2012	DATE -	REVISED -

**STATE OF ILLINOIS
 DEPARTMENT OF TRANSPORTATION**

**PROPOSED TYPICAL SECTIONS
 MAINLINE**

SCALE: SHEET NO. OF SHEETS STA. TO STA.

F.A. RTE.	SECTION	COUNTY	TOTAL SHEETS	SHEET NO.
70	(18-47,48,49)R	CUMBERLAND	30	9
CONTRACT NO. 74416				
ILLINOIS FED. AID PROJECT				

TREE REMOVAL - EASTBOUND

STATION	TREE REMOVAL (6 TO 15 UNITS)	TREE REMOVAL (OVER 15 UNITS DIAMETER)	STATION	TREE REMOVAL (6 TO 15 UNITS)	TREE REMOVAL (OVER 15 UNITS DIAMETER)
300+67		16	413+40	14	
336+13	12		413+90	13	
339+25	10		414+40		17
339+33	6		414+88	15	
339+39	7		423+35	19	
339+48	7		471+85	10	
341+20	26		474+19	14	
341+85	15		474+86	7	
346+70		20	475+69	15	
390+83	19		479+94	13	
391+16		17	483+32	13	
391+50	29		483+42	13	
392+27	36		483+44	6	
392+27	7		483+47	7	
392+62		20	483+50	6	
392+93		25	483+75	13	
393+16	10		495+15	14	
393+30	13		497+66	26	
403+34	11		503+71	11	
403+50		17	511+46	15	
403+95		16	512+22	21	
404+50		22	518+85	6	
405+00		23	520+34	8	
405+48		23	522+29	9	
406+45		22	523+76		19
407+00	28		538+38	21	
407+00		24	538+99	9	
407+50		18	538+99		22
408+50		19	539+37	11	
408+95		18	550+77		16
409+50		16	554+67	15	
409+95		18	601+72	12	
410+44		15	602+74	18	
411+00		22	603+69	18	
411+44		18	606+90		21
411+92		14	611+93	15	
412+40		15	613+16		22
412+90		14	TOTALS	741	451

TREE REMOVAL - WESTBOUND

STATION	TREE REMOVAL (6 TO 15 UNITS)	TREE REMOVAL (OVER 15 UNITS DIAMETER)	STATION	TREE REMOVAL (6 TO 15 UNITS)	TREE REMOVAL (OVER 15 UNITS DIAMETER)
313+09	6		343+37		36
318+42		16	344+36	51	
323+25		30	344+88	27	
323+76		29	345+37	48	
325+79		38	345+37		18
326+30	24		345+85	23	
326+30	10		346+30	51	
326+30		22	346+30		18
326+55		39	346+85	61	
327+80	13		367+70	8	
328+80	23		368+71	60	
328+80		23	369+20	24	
329+77	35		369+20		36
329+77		38	369+70		22
330+29	33		370+19		37
330+29		20	370+68		24
330+50	18		371+08	32	
330+50		28	376+70	8	
330+68	9		388+71		19
331+85	9		389+51		20
332+02	49		389+83		22
332+02		52	395+64		16
332+56	26		438+24		24
332+56		36	438+75		23
336+45	23		439+26		18
336+45		26	439+75		43
337+49	41		440+23		38
337+49		17	441+23		39
338+94	38		441+75	14	
338+94		40	447+18	10	
339+45	77		447+18		18
340+43	68		447+69	30	
341+04	27		465+99	56	
341+60	44		466+48	20	
341+91	15		466+95	44	
341+91		16	467+44	30	
342+90	44		467+44		23
342+90		17	467+95	36	

STATION	TREE REMOVAL (6 TO 15 UNITS)	TREE REMOVAL (OVER 15 UNITS DIAMETER)
467+95		16
468+96	52	
469+42	74	
469+95	80	
470+90	10	
470+90		29
471+35		38
471+88	36	
472+39		100
472+58	23	
532+27		20
544+00		16
545+06		24
545+59		26
546+95		17
548+13		22
575+45	15	
575+93	30	
576+02	30	
598+75	6	
545+95		18
TOTALS	1621	1307

TREE REMOVAL, ACRES - EASTBOUND

STATION	TO	STATION	LENGTH (FEET)	WIDTH (FEET)	QUANTITY (ACRES)
342+37	TO	346+70	433	20	0.20
394+30	TO	396+40	210	20	0.10
491+25	TO	494+76	351	20	0.16
510+20	TO	510+80	60	14	0.02
512+50	TO	512+76	26	12	0.01
513+10	TO	513+58	48	10	0.01
524+16	TO	525+56	140	20	0.06
615+20	TO	618+00	280	21	0.13
TOTAL					0.75

FILE NAME =	USER NAME = teasleyck	DESIGNED -	REVISED -
ct:\pw\work\p\dot\teasleyck\d0148656\07	4416-sht-sch.dgn	DRAWN -	REVISED -
	PLOT SCALE = 100.0000' / in.	CHECKED -	REVISED -
	PLOT DATE = 8/17/2012	DATE -	REVISED -

STATE OF ILLINOIS
DEPARTMENT OF TRANSPORTATION

TREE REMOVAL
SCHEDULE

SCALE: SHEET OF SHEETS STA. TO STA.

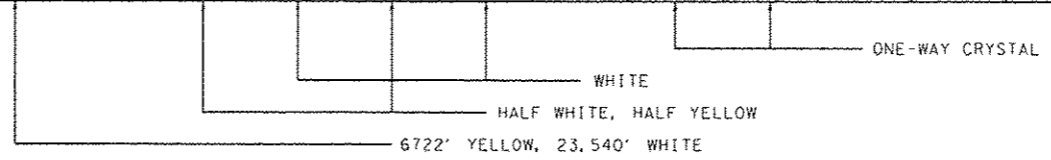
F.A.I. RE.	SECTION	COUNTY	TOTAL SHEETS	SHEET NO.
70	(18-47,48,48R)	Cumberland	30	10
CONTRACT NO.			74416	
ILLINOIS FED. AID PROJECT				

PAVING SCHEDULE

STATION TO STATION	LENGTH (FEET)	PAVEMENT WIDTH (FEET)	AREA (SQ YD)	HMA SURFACE REMOVAL, 1/2" (SQ YD)	HMA SURFACE REMOVAL, 2" (SQ YD)	HMA SURFACE REMOVAL, 6 1/2" (SQ YD)	HMA SURFACE REMOVAL, VARIABLE DEPTH (SQ YD)	HMA SURFACE REMOVAL - BUTT JOINT (SQ YD)	RUBBLIZING PCC PAVEMENT (SQ YD)	PAVEMENT REMOVAL (SQ YD)	BITUMINOUS MATERIALS (PRIME COAT) (GALLON)	POLYMERIZED HMA SURFACE COURSE, STONE MATRIX ASPHALT, N80 (TON)	POLYMERIZED HMA SURFACE COURSE, MIX "D", N105 (TON)	POLYMERIZED HMA BINDER COURSE, IL-19.0 FG, N105 (TON)	HMA BINDER COURSE, IL-19.0, N90 (TON)	HMA BINDER COURSE, IL-19.0 L, N30 (TON)	HMA SHOULDERS (TON)	HMA BASE COURSE, 4 3/4" (SQ YD)	HMA BASE COURSE, 12 3/4" (SQ YD)	TEMPORARY RAMP (SQ YD)	AGGREGATE SHOULDERS, TYPE B (TON)	SHOULDER RUMBLE STRIPS, 16" (FOOT)		
EASTBOUND																								
292+20 TO 344+62	5242	24	13978.7			13098.7		1466.7	12565.3		2469.6	1817.2		1992.5	5382.5	1516.4	1043.7				31.1	1791.0	13484	
344+62 TO 352+62	800	24	2133.3		1422.2					2133.3	1464.9	277.3		298.7	836.3		159.3	2133.3					1600	
352+62 TO 430+30	7768	24	20714.7			20714.7			19114.7		3659.6	2692.9		3053.5	8308.7	2320.0	1546.7					2654.1	15536	
430+30 TO 438+30	800	24	2133.3		1422.2					2133.3	1464.9	277.3		298.7	836.3		159.3	2133.3					1600	
438+30 TO 486+23	4793	24	12781.3			11901.3		1466.7	11101.3		2258	1661.6		1816.0	4902.2	1382.2	954.3				31.1	1637.6	9586	
486+23 TO 488+17	194	BRIDGE	517.3																					
488+17 TO 525+68	3751	24	10002.7					1466.7	8056.0		1767.1	1300.3		1406.4	3787.7	1071.0	799.9				31.1	1281.6	7502	
525+68 TO 533+68	800	24	2133.3		1422.2					2133.3	1464.9	277.3		298.7	836.3		159.3	2133.3					1600	
533+68 TO 617+42	8374	24	22330.7			22330.7			21264.0		3945.1	2903.0		3291.7	8956.8	2501.0	1667.4					2861.1	16748	
617+42 TO 625+42	800	24	2133.3		1422.2					2133.3	1464.9	277.3		298.7	836.3		159.3	2133.3					1600	
625+42 TO 675+54	5012	24	13365.3			12485.3		1466.7	11952.0		2361.2	1737.5		1902.0	5136.5	1447.7	1044.9				31.1	1712.4	11024	
EASTBOUND TOTALS						0	5689	89653	0	5867	84053	8533	22320	13222	0	14657	39819	10238	7694	8533	0	124	11938	80280
WESTBOUND																								
292+20 TO 346+38	5418	24	14448.0	23826.7				244.4			3130.4	1878.2	1206.9				1887.9				31.1	334.2	10836	
346+38 TO 351+38	500	24	1333.3		888.9					1333.3	915.6	173.3	112.0				99.6		1333.3				1000	
351+38 TO 432+05	8067	24	21512.0	35853.3							4660.9	2796.6	1807.0				2810.9					497.7	16134	
432+05 TO 437+05	500	24	1333.3		888.9					1333.3	915.6	173.3	112.0				99.6		1333.3				1000	
437+05 TO 457+80	2075	24	5533.3	7755.6			1466.7				1198.9	719.3	390.9	98.6	152.9	73.9	723.0					128.0	4150	
457+80 TO 486+23	2843	24	7581.3			6701.3		1466.7	6701.3		1339.4	985.6		1049.4	2816.5	799.8	566.1				31.1	971.4	5686	
486+23 TO 488+17	194	BRIDGE	517.3																					
488+17 TO 525+94	3777	24	10072.0			9192.0		1466.7	8658.7		1779.4	1309.4		1416.6	3815.5	1078.8	752.0				31.1	1290.5	7554	
525+94 TO 533+94	800	24	2133.3		1422.2					2133.3	1464.9	277.3		298.7	836.3		159.3	2133.3					1600	
533+94 TO 617+42	8348	24	22261.3			22261.3			20128.0		3932.8	2894.0		3281.5	8929.0	2493.3	1662.2					2852.2	16696	
617+42 TO 625+42	800	24	2133.3		1422.2					2133.3	1464.9	277.3		298.7	836.3		159.3	2133.3					1600	
625+42 TO 675+54	5012	24	13365.3			12485.3		1466.7	11418.7		2361.2	1737.5		1902.0	5136.5	1447.7	997.9				31.1	1712.4	13024	
WESTBOUND TOTALS						67436	4622	50640	1467	4645	46907	6933	23164	13222	3628.8	8345	22523	5894	9918	4267	2667	124	7786	79280
TOTALS						67436	10311	140293	1467	10511	130960	15467	45484	26444	3629	23002	62342	16132	17612	12800	2667	249	19724	159560

PAVEMENT MARKING SCHEDULE

STATION TO	STATION	LENGTH (FEET)	SHORT-TERM PAVEMENT MARKING (FOOT)	WORK ZONE PAVEMENT MARKING REMOVAL (SQ FT)	TEMPORARY PAVEMENT MARKING - LINE 4" (FOOT)	TEMPORARY PAVEMENT MARKING - LINE 6" (FOOT)	MODIFIED URETHANE PAVEMENT MARKING - LINE 4" (FOOT)	MODIFIED URETHANE PAVEMENT MARKING - LINE 6" (FOOT)	PREFORMED PLASTIC PAVEMENT MARKING, TYPE B - INLAID - LINE 6" (FOOT)	RAISED REFLECTIVE PAVEMENT MARKER (EACH)	RAISED REFLECTIVE PAVEMENT MARKER (BRIDGE) (EACH)	GROOVING FOR RECESSED PAVEMENT MARKING 5" (FOOT)	GROOVING FOR RECESSED PAVEMENT MARKING 7" (FOOT)	DELINEATOR REMOVAL (EACH)	DELINEATORS (EACH)
EASTBOUND															
292+20	TO 344+62	5242	1887	10044	10484	1311	10484		1311	131		10484		15	15
344+62	TO 352+62	800	288	2181	1600	200	1600		200	20		1600		2	2
352+62	TO 430+30	7768	2796	12097	15536	1942	15536		1942	194		15536		33	33
430+30	TO 438+30	800	288	2181	1600	200	1600		200	20		1600		3	3
438+30	TO 486+23	4793	1726	4303	9586	1198	9586		1198	120		9586		24	24
486+23	TO 488+17	194		259	388	49	388	49			6	388	49	1	1
488+17	TO 525+68	3751	1351	6500	7502	938	7502		938	94		7502		19	19
525+68	TO 533+68	800	288	2181	1600	200	1600		200	20		1600		5	5
533+68	TO 617+42	8374	3015	12941	16748	2094	16748		2094	210		16748		21	21
617+42	TO 625+42	800	288	2181	1600	200	1600		200	20		1600		2	2
625+42	TO 675+54	5012	1804	6983	10024	1253	10024		1253	125		10024		13	13
EASTBOUND TOTALS			13731	61851	76668	9584	76668	49	9535	954	6	76668	49	138	138
WESTBOUND															
292+20	TO 346+38	5418	2926	325	10836	1355	10836		1355	136		10836.0		16	16
346+38	TO 351+38	500	180	697	1000	125	1000		125	31		1000.0		1	1
351+38	TO 432+05	8067	4356	1757	16134	2017	16134		2017	183		16134.0		34	34
432+05	TO 437+05	500	180	697	1000	125	1000		125	31		1000.0		1	1
437+05	TO 457+80	2075	1121	1398	4150	519	4150		519	33		4150.0		12	12
457+80	TO 486+23	2843	1023	3961	5686	711	5686		711	71		5686.0		13	13
486+23	TO 488+17	194		259	388	49	388	49			6	388	49	1	1
488+17	TO 525+94	3777	1360	5263	7554	944	7554		944	94		7554.0		19	19
525+94	TO 533+94	800	288	2181	1600	200	1600		200	20		1600.0		5	5
533+94	TO 617+42	8348	3005	12905	16696	2087	16696		2087	209		16696.0		21	21
617+42	TO 625+42	800	288	2181	1600	200	1600		200	20		1600.0		2	2
625+42	TO 675+54	5012	1804	10257	10024	1253	10024		1253	125		10024.0		13	13
WESTBOUND TOTALS			16531	41880	76668	9584	76668	49	9535	953	6	76668	49	138	138
TOTALS			30262	103732	153336	19167	153336	97	19070	1907	12	153336	97	276	276



GUARDRAIL REMOVAL

DESCRIPTION	STATIONING		SIDE	LENGTH (FOOT)
	FROM	TO		
EASTBOUND				
OVERHEAD SN 018-0038	344+20	348+50	RT	430
OVERHEAD SN 018-0016	429+88	434+18	RT	430
BRIDGE SN 018-0052	483+09	486+44	RT	335
BRIDGE SN 018-0052	484+84	486+44	LT	160
OVERHEAD SN 018-0039	525+26	529+56	RT	430
OVERHEAD SN 018-0083	617+05	621+35	RT	430
EASTBOUND TOTAL				2215
WESTBOUND				
OVERHEAD SN 018-0038	349+00	353+30	LT	430
OVERHEAD SN 018-0016	434+68	438+98	LT	430
BRIDGE SN 018-0051	487+96	489+56	LT	160
BRIDGE SN 018-0051	487+96	491+04	RT	308
OVERHEAD SN 018-0039	525+26	529+56	LT	343
OVERHEAD SN 018-0053	621+49	625+79	LT	430
WESTBOUND TOTAL				2101
TOTAL				4316

GUARDRAIL SCHEDULE

DESCRIPTION	STATIONING		SIDE	(FOOT)	STEEL PLATE BEAM GUARDRAIL, TYPE A, 6 FOOT POSTS	TRAFFIC BARRIER TERMINAL, TYPE 1 (SPECIAL) TANGENT	TRAFFIC BARRIER TERMINAL, TYPE 6	TRAFFIC BARRIER TERMINAL, TYPE 6B	GUARDRAIL MARKERS, TYPE A	TERMINAL MARKER - DIRECT APPLIED
	FROM	TO								
EASTBOUND										
OVERHEAD SN 018-0038	345+94.5	346+44.5	RT							1
	346+44.5	348+07.0	RT	162.5				3		
	348+07.0	348+63.0	RT					1	1	
OVERHEAD SN 018-0016	431+62.5	432+12.5	RT							1
	432+12.5	433+75.0	RT	162.5					3	
	433+75.0	434+31.0	RT					1	1	
BRIDGE SN 018-0052	483+50.0	484+00.0	LT							1
	484+00.0	486+00.0	LT	200					3	
	486+00.0	486+44.0	LT			1			1	
	483+87.5	484+37.5	RT							1
	484+37.5	486+00.0	RT	162.5					3	
	486+00.0	486+44.0	RT			1			1	
OVERHEAD SN 018-0039	527+00.5	527+50.5	RT							1
	527+50.5	529+13.0	RT	162.5					3	
	529+13.0	529+69.0	RT					1	1	
OVERHEAD SN 018-0053	618+79.5	619+29.5	RT							1
	619+29.5	620+92.0	RT	162.5					3	
	620+92.0	621+48.0	RT					1	1	
EASTBOUND TOTALS				1012.5	6	2	4	24		6
WESTBOUND										
OVERHEAD SN 018-0038	348+87.0	349+43.0	LT							1
	349+43.0	351+05.5	LT	162.5				1	3	
	351+05.5	351+55.5	LT							1
OVERHEAD SN 018-0016	434+55.0	435+11.0	LT					1	1	
	435+11.0	436+73.5	LT	162.5					3	
	436+73.5	437+23.5	LT							1
BRIDGE SN 018-0051	487+96.0	488+40.0	LT				1		1	
	488+40.0	490+02.5	LT	162.5					3	
	490+02.5	490+52.5	LT			1				1
	487+96.0	488+40.0	RT				1		1	
	488+40.0	490+40.0	RT	200					3	
	490+40.0	490+90.0	RT							1
OVERHEAD SN 018-0039	529+93.0	530+49.0	LT					1	1	
	530+49.0	532+11.5	LT	162.5					3	
	532+11.5	532+61.5	LT					1		1
OVERHEAD SN 018-0053	621+36.0	621+92.0	LT					1	1	
	621+92.0	623+54.5	LT	162.5					3	
	623+54.5	624+04.5	LT							1
WESTBOUND TOTAL				1012.5	6	2	4	24		6
TOTAL				2025	12	4	8	48		12

PIER PROTECTION SCHEDULE

STATION	OVERHEAD S.N.	SAND MODULE IMPACT ATTENUATOR TO BE REMOVED (EACH)	IMPACT ATTENUATORS (NON-REDIRECTIVE) TEST LEVEL 3 (EACH)
348+75	018-0038	2	2
433+00	018-0016	2	2
529+81	018-0039	2	2
621+42	018-0053	2	2
TOTALS		8	8

PIPE UNDERDRAINS SCHEDULE

STATION	LENGTH (FEET)	PIPE UNDERDRAINS 6" (FEET)	PIPE UNDERDRAINS 6" (SPECIAL) (FEET)	CLEANING UNDERDRAIN OUTLETS (EACH)	CONCRETE HEADWALL REMOVAL SPECIAL (EACH)	SHOULDER REMOVAL AND REPLACEMENT 12 1/2" (FEET)
EASTBOUND						
292+20	482+93	19073	38146	1820	76	20881
482+93	489+50	657				
489+50	673+00	18350	36700	1820	76	20338
EASTBOUND TOTALS			74846	3640	0	152
WESTBOUND						
292+20	346+38	5418		22		0
346+38	351+38	500	1000	48	2	1016
351+38	432+05	8067		32		0
432+05	437+05	500	1000	48	2	1016
437+05	457+80	2075		8		0
457+80	482+93	2513	5026	288	12	2373
482+93	489+50	657				0
489+50	673+00	18350	36700	1772	82	20338
WESTBOUND TOTALS			43726	2156	62	98
TOTALS			118572	5796	62	250



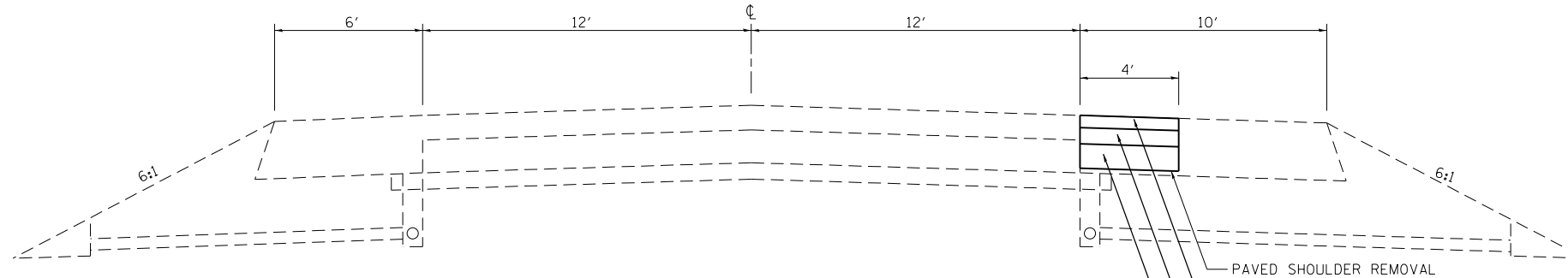
PAVEMENT REMOVAL



HMA SURFACE REMOVAL 2"

NOTE: FOR USE WITH TRAFFIC CONTROL AND PROTECTION, STANDARD 701402.

- ① HMA BINDER COURSE, IL-19.0, N90
- ② HMA BINDER COURSE, IL-19.0 N70



PRE-STAGE I (WESTBOUND)

STA 345+38 TO STA 353+63
 STA 431+05 TO STA 439+30
 STA 525+94 TO STA 533+94
 STA 617+42 TO STA 625+42

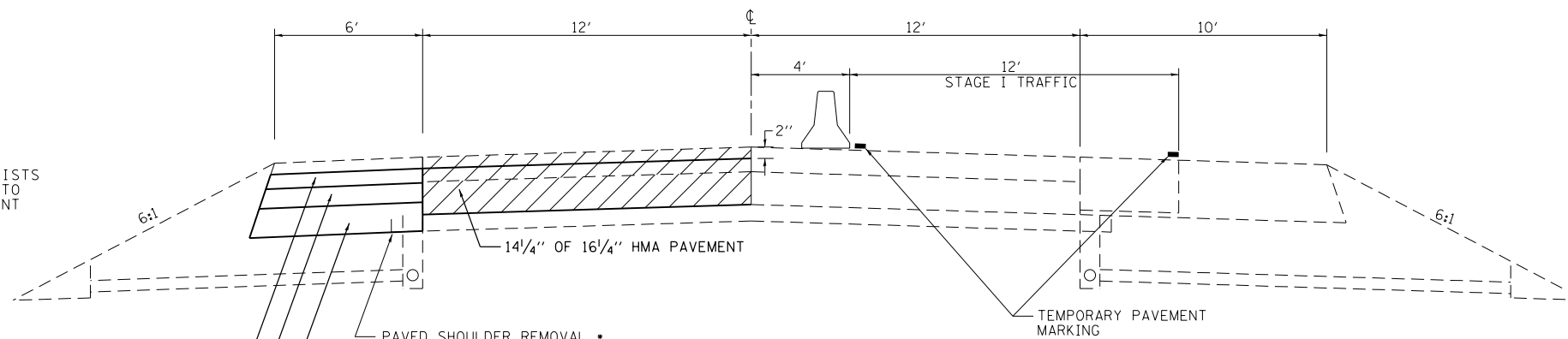
PRE-STAGE I (EASTBOUND)

STA 344+62 TO STA 352+62
 STA 430+30 TO STA 438+30
 STA 525+68 TO STA 533+68
 STA 617+42 TO STA 625+42

- PAVED SHOULDER REMOVAL
- ① 3" (PAID FOR AS HMA SHOULDERS, 13")
- ② 4" (PAID FOR AS HMA SHOULDERS, 13")
- ② 6" (PAID FOR AS HMA SHOULDERS, 13")

NOTE: WHERE PCC WIDENING EXISTS NEAR BRIDGES, USE 2" HMA SURFACE REMOVAL (50 YD) FOLLOWED BY HMA SHOULDERS (TON).

NOTE: WHERE PCC WIDENING EXISTS NEAR BRIDGES, SWITCH TO 2" REMOVAL & REPLACEMENT



STAGE I (WESTBOUND)

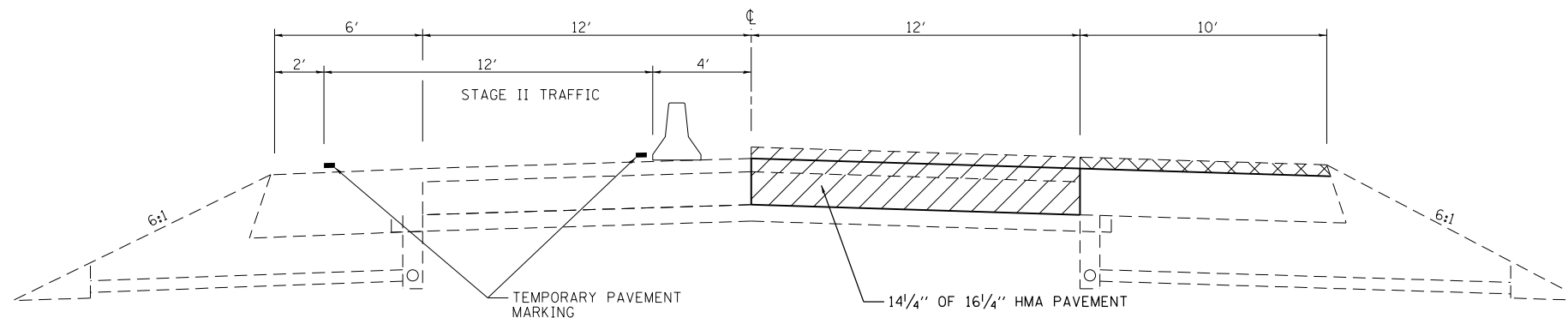
STA 346+38 TO STA 351+38
 STA 432+05 TO STA 437+05
 STA 525+94 TO STA 533+94
 STA 618+42 TO STA 625+42

STAGE I (EASTBOUND)

STA 344+62 TO STA 352+62
 STA 430+30 TO STA 438+30
 STA 525+68 TO STA 533+68
 STA 617+42 TO STA 625+42

- 3" (PAID FOR AS HMA SHOULDERS, 13") ①
- 4" (PAID FOR AS HMA SHOULDERS, 13") ②
- 6" (PAID FOR AS HMA SHOULDERS, 13") ②

• TO PLACE THE HMA SHOULDERS, 13" AT THE PROPER ELEVATION AS SHOWN, THE CONTRACTOR SHALL BE REQUIRED TO EXCAVATE 2" OF MATERIAL BELOW THE EXISTING HMA SHOULDER. ALL COSTS ASSOCIATED WITH THE EXCAVATION SHALL BE INCLUDED IN THE PER UNIT PRICE OF PAVED SHOULDER REMOVAL.



STAGE 2 (WESTBOUND)

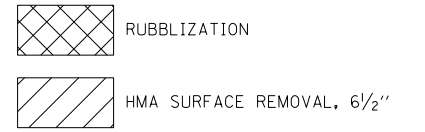
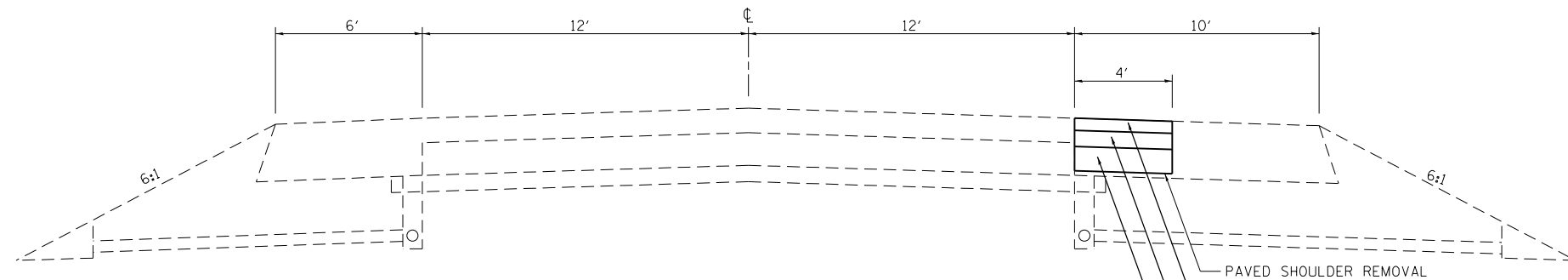
STA 346+38 TO STA 351+38
 STA 432+05 TO STA 437+05
 STA 525+94 TO STA 533+94
 STA 618+42 TO STA 625+42

STAGE 2 (EASTBOUND)

STA 344+62 TO STA 352+62
 STA 430+30 TO STA 438+30
 STA 525+68 TO STA 533+68
 STA 617+42 TO STA 625+42

NOTE: NOT DRAWN TO SCALE

FILE NAME =	USER NAME = teasleyck	DESIGNED -	REVISED -	STATE OF ILLINOIS DEPARTMENT OF TRANSPORTATION	PAVEMENT REMOVAL STAGE CONSTRUCTION DETAILS			F.A. RTE.	SECTION	COUNTY	TOTAL SHEETS	SHEET NO.
ct:\pw\work\p\idot\teasleyck\d0148656\07	4416-sht-details.dgn	DRAWN -	REVISED -		70	(18-47,48,49)R	CUMBERLAND	30	14			
	PLOT SCALE = 100.0000' / 1in.	CHECKED -	REVISED -		CONTRACT NO. 74416							
	PLOT DATE = 8/17/2012	DATE -	REVISED -		ILLINOIS FED. AID PROJECT							
				SCALE: NA	SHEET NO.	OF SHEETS	STA.	TO STA.				



NOTE: FOR USE WITH TRAFFIC CONTROL AND PROTECTION, STANDARD 701401 (SPECIAL).

PRE-STAGE 1 (WESTBOUND)

STA. 452+80 TO STA. 486+23
 STA. 488+17 TO STA. 525+94
 STA. 533+94 TO STA. 617+42
 STA. 625+42 TO STA. 683+04

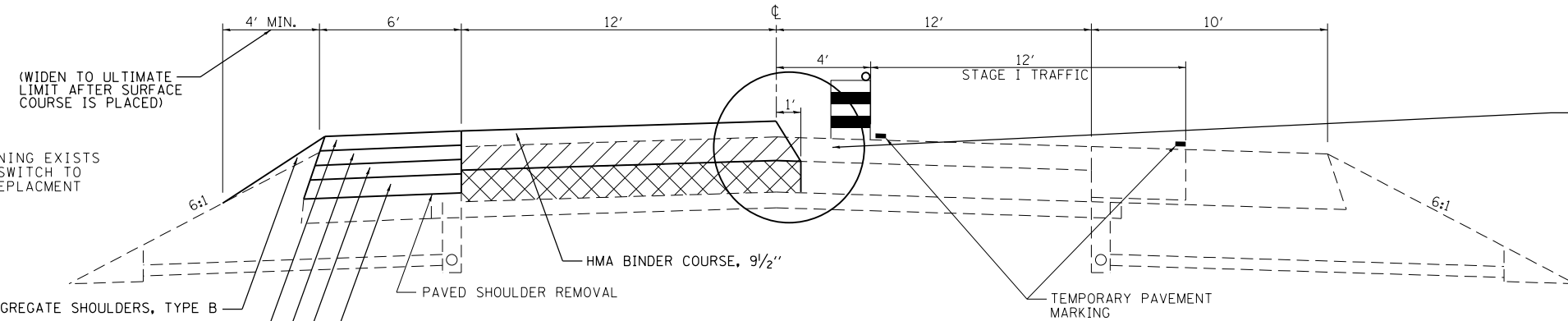
PRE-STAGE 1 (EASTBOUND)

STA. 284+70 TO STA. 344+62
 STA. 352+62 TO STA. 430+30
 STA. 438+30 TO STA. 486+23
 STA. 488+17 TO STA. 525+68
 STA. 533+68 TO STA. 617+42
 STA. 625+42 TO STA. 677+24

- ① 3" (PAID FOR AS HMA SHOULDERS, 13")
- ② 4" (PAID FOR AS HMA SHOULDERS, 13")
- ③ 6" (PAID FOR AS HMA SHOULDERS, 13")

NOTE: WHERE PCC WIDENING EXISTS NEAR BRIDGES, SWITCH TO 2" REMOVAL & REPLACEMENT

- ① HMA BINDER COURSE, IL-19.0, N90
- ② HMA BINDER COURSE, IL-19.0 N70
- ③ HMA BINDER COURSE, IL-19.0L N30



NOTE: WHERE PCC WIDENING EXISTS NEAR BRIDGES, SWITCH TO 2" REMOVAL & REPLACEMENT

(WIDEN TO ULTIMATE LIMIT AFTER SURFACE COURSE IS PLACED)

STAGE 1 (WESTBOUND)

STA. 452+80 TO STA. 486+23
 STA. 488+17 TO STA. 525+94
 STA. 533+94 TO STA. 617+42
 STA. 625+42 TO STA. 683+04

STAGE 1 (EASTBOUND)

STA. 284+70 TO STA. 344+62
 STA. 352+62 TO STA. 430+30
 STA. 438+30 TO STA. 486+23
 STA. 488+17 TO STA. 525+68
 STA. 533+68 TO STA. 617+42
 STA. 625+42 TO STA. 677+24

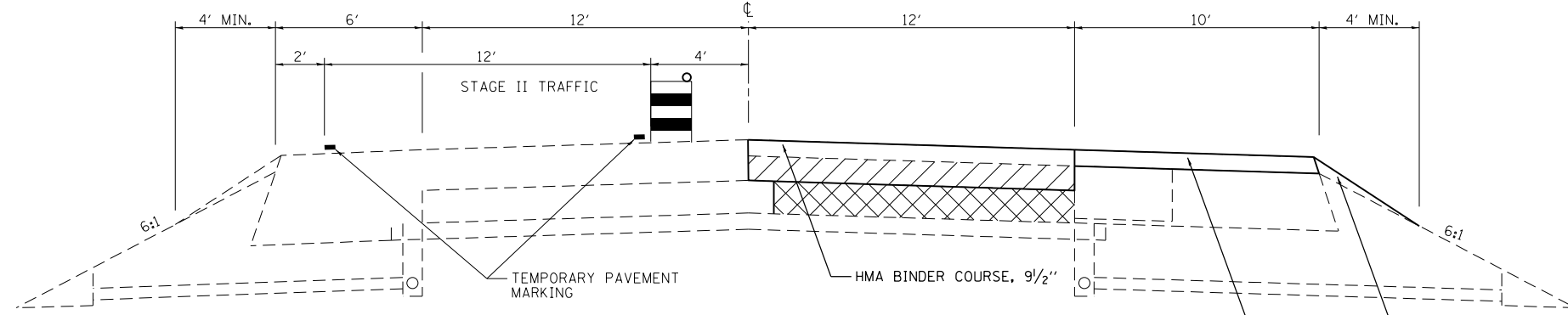
- 3" (PAID FOR AS HMA SHOUDERS, 10") ①
- 3" (PAID FOR AS HMA SHOUDERS, 10") ②
- 4" (PAID FOR AS HMA SHOUDERS, 10") ②

SUGGESTED SEQUENCE OF OPERATIONS

Both stages of rubblized sections shall be complete, with the exception of SMA surface course, prior to opening both lanes to traffic.

The following is a suggested sequence of operations:

1. Remove 4' of driving lane shoulder and construct HMA Shoulder 13" in rubblization/replacement areas (pre-stage 1).
2. Install pipe underdrain on passing lane side (stage 1).
3. Remove 6' passing lane shoulder and construct HMA Shoulder 13" in rubblization/replacement areas (stage 1).
4. Construct stage 1 rubblization sections and pavement replacement under the overhead structures.
5. Install pipe underdrain on driving lane side.
6. Construct stage 2 rubblization sections and pavement replacement under the overhead structures.
7. Construct SMA surface course on mainline.
8. Install new guardrail.



STAGE 2 (WESTBOUND)

STA. 457+80 TO STA. 486+23
 STA. 488+17 TO STA. 525+94
 STA. 533+94 TO STA. 617+42
 STA. 625+42 TO STA. 675+54

STAGE 2 (EASTBOUND)

STA. 292+20 TO STA. 344+62
 STA. 352+62 TO STA. 430+30
 STA. 438+30 TO STA. 486+23
 STA. 488+17 TO STA. 525+68
 STA. 533+68 TO STA. 617+42
 STA. 625+42 TO STA. 675+54

NOTE: NOT DRAWN TO SCALE

FILE NAME =	USER NAME = teasleyck	DESIGNED -	REVISED -	STATE OF ILLINOIS DEPARTMENT OF TRANSPORTATION	RUBBLIZATION STAGE CONSTRUCTION DETAILS			F.A. RTE.	SECTION	COUNTY	TOTAL SHEETS	SHEET NO.
ci:\pwork\work\pwork\teasleyck\d0148656\074416-sht-details.dgn		DRAWN -	REVISED -		70	(18-47,48,49)R	CUMBERLAND	30	15			
PLOT SCALE = 100.0000' / 1in.		CHECKED -	REVISED -		CONTRACT NO. 74416							
PLOT DATE = 8/17/2012		DATE -	REVISED -		SCALE: NA	SHEET NO.	OF SHEETS	STA.	TO STA.	ILLINOIS FED. AID PROJECT		

PRE-STAGE I QUANTITIES

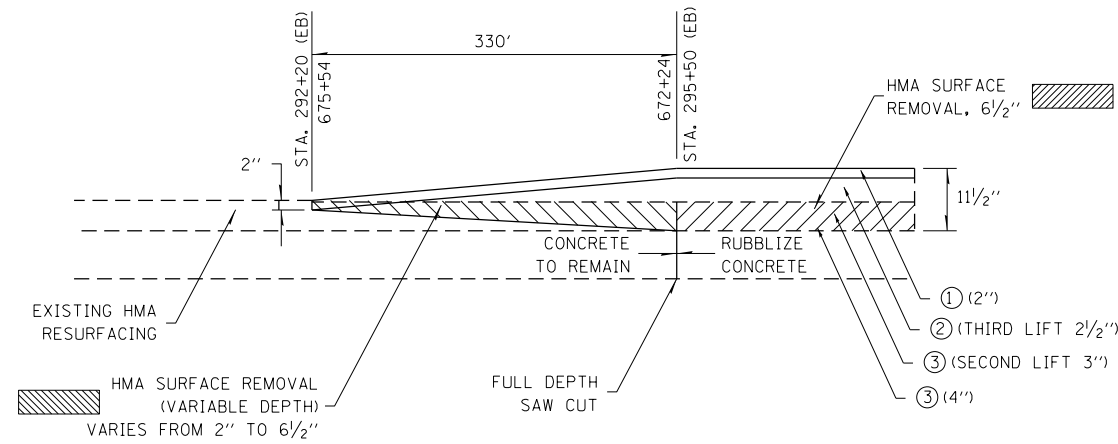
STATION TO STATION	LENGTH (FEET)	PAVEMENT MARKING REMOVAL (SQ FT)	PAVED SHOULDER REMOVAL (SQ YD)	HMA SHOULDERS, 13" (SQ YD)
EASTBOUND				
284+70 TO 344+62	5992	1997	2663	2663
344+62 TO 352+62	800	267	356	356
352+62 TO 430+30	7768	2589	3452	3452
430+30 TO 438+30	800	267	356	356
438+30 TO 486+23	4793	1598	2130	2130
486+23 TO 488+17	194	145	0	0
488+17 TO 525+68	3751	1250	1667	1667
525+68 TO 533+68	800	267	356	356
533+68 TO 617+42	8374	2791	3722	3722
617+42 TO 625+42	800	267	356	356
625+42 TO 677+24	5182	1671	2303	2303
TOTALS		13109	17361	17361
WESTBOUND				
345+38 TO 358+88	1350	417	367	367
431+05 TO 444+55	1350	417	367	367
452+80 TO 486+23	3343	948	1486	1486
486+23 TO 488+17	194	145	0	0
488+17 TO 525+94	3777	1259	1678	1678
525+94 TO 533+94	800	267	356	356
533+94 TO 617+42	8348	2782	3710	3710
617+42 TO 625+42	800	267	356	356
625+42 TO 683+04	5762	1920	2561	2561
TOTALS		8422	10881	10881

STAGE I QUANTITIES

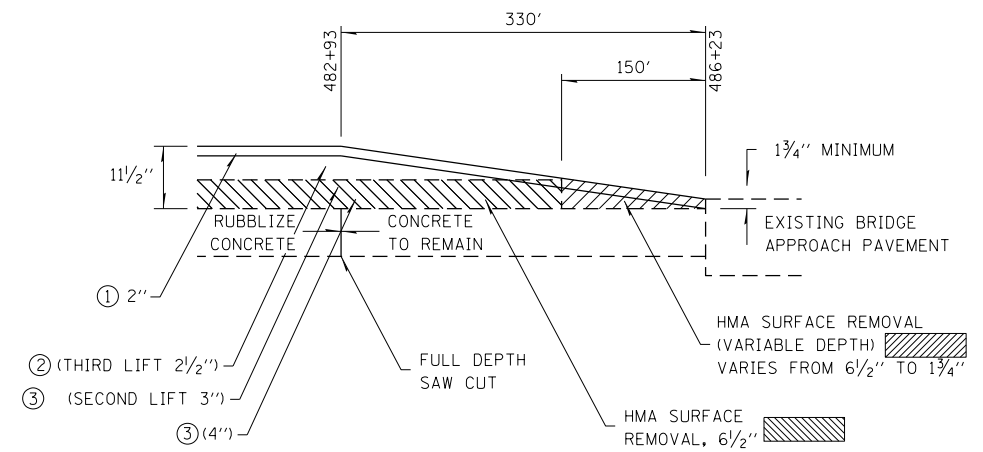
STATION TO STATION	LENGTH (FEET)	PAVED SHOULDER REMOVAL (SQ YD)	HMA SHOULDERS, 10" (SQ YD)	HMA SHOULDERS, 13" (SQ YD)
EASTBOUND				
277+20 TO 344+62	6742	3995	3995	0
344+62 TO 352+62	800	533	0	533
352+62 TO 430+30	7768	5179	5179	0
430+30 TO 438+30	800	533	0	533
438+30 TO 486+23	4793	3195	3195	0
486+23 TO 488+17	194	0	0	0
488+17 TO 525+68	3751	2501	2501	0
525+68 TO 533+68	800	533	0	533
533+68 TO 617+42	8374	5583	5583	0
617+42 TO 625+42	800	533	0	533
625+42 TO 680+54	5512	3455	3455	0
TOTALS		26040	23908	2132
WESTBOUND				
345+38 TO 353+63	825	550	0	550
431+05 TO 439+30	825	550	0	550
452+80 TO 486+23	3343	2228	2228	0
486+23 TO 488+17	194	0	0	0
488+17 TO 525+94	3777	2518	2518	0
525+94 TO 533+94	800	533	0	533
533+94 TO 617+42	8348	5565	5565	0
617+42 TO 625+42	800	533	0	533
625+42 TO 690+54	6512	3841	3841	0
TOTALS		16318	14152	2166

STAGE II QUANTITIES

STATION TO STATION	LENGTH (FEET)	RELOCATE TEMPORARY CONCRETE BARRIER (EACH)	IMPACT ATTENUATORS, RELOCATE (NON-REDIRECTIVE), TEST LEVEL 3 (EACH)
EASTBOUND			
342+37 TO 352+62	1025		1
428+05 TO 438+30	1025		1
523+43 TO 533+68	1025		1
615+17 TO 625+42	1025		1
TOTALS	4100		4
WESTBOUND			
346+38 TO 353+63	725		1
432+05 TO 439+30	725		1
525+94 TO 536+19	1025		1
617+42 TO 627+67	1025		1
TOTALS	3500		4

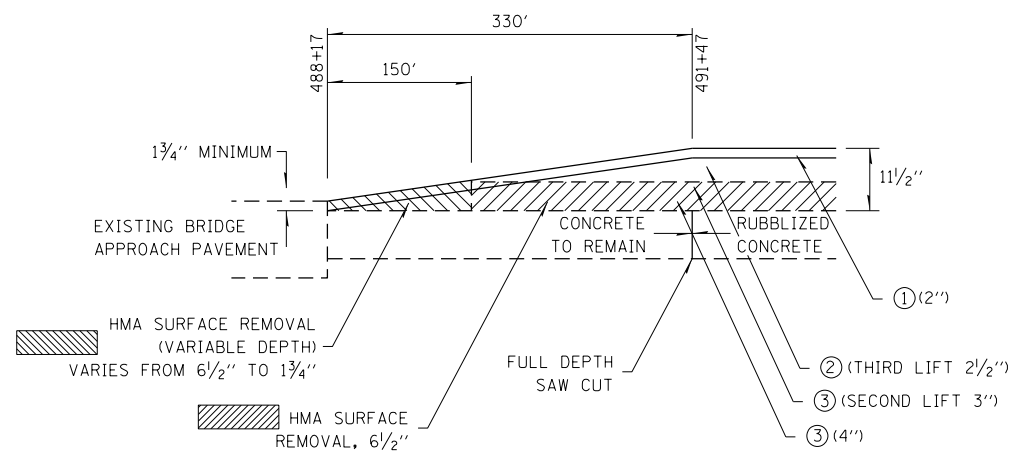


BUTT JOINT DETAIL #1

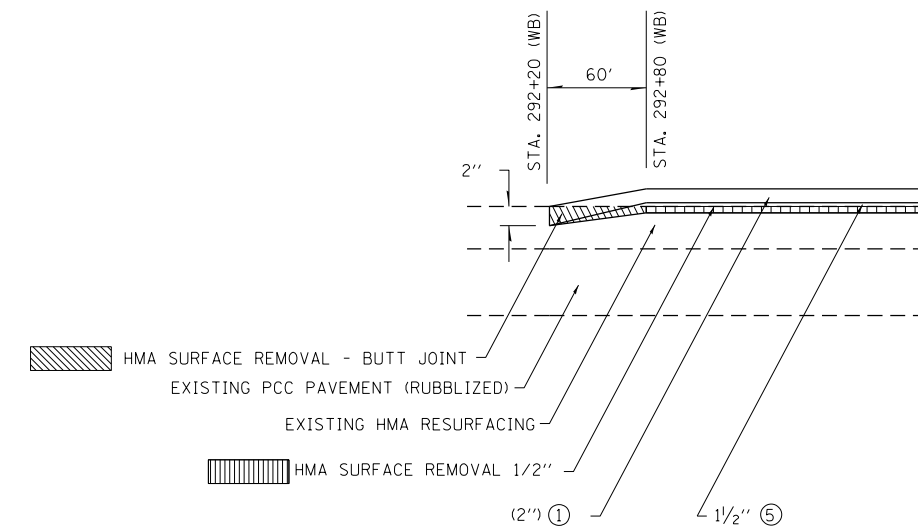


BUTT JOINT DETAIL #2

- ① POLYMERIZED HMA SURFACE COURSE, STONE MATRIX ASPHALT, N80
- ② POLYMERIZED HMA BINDER COURSE, IL-19.0 FG, N105
- ③ HMA BINDER COURSE, IL-19.0, N90
- ⑤ POLYMERIZED HMA SURFACE COURSE, MIX "D", N105



BUTT JOINT DETAIL #3



BUTT JOINT DETAIL #4

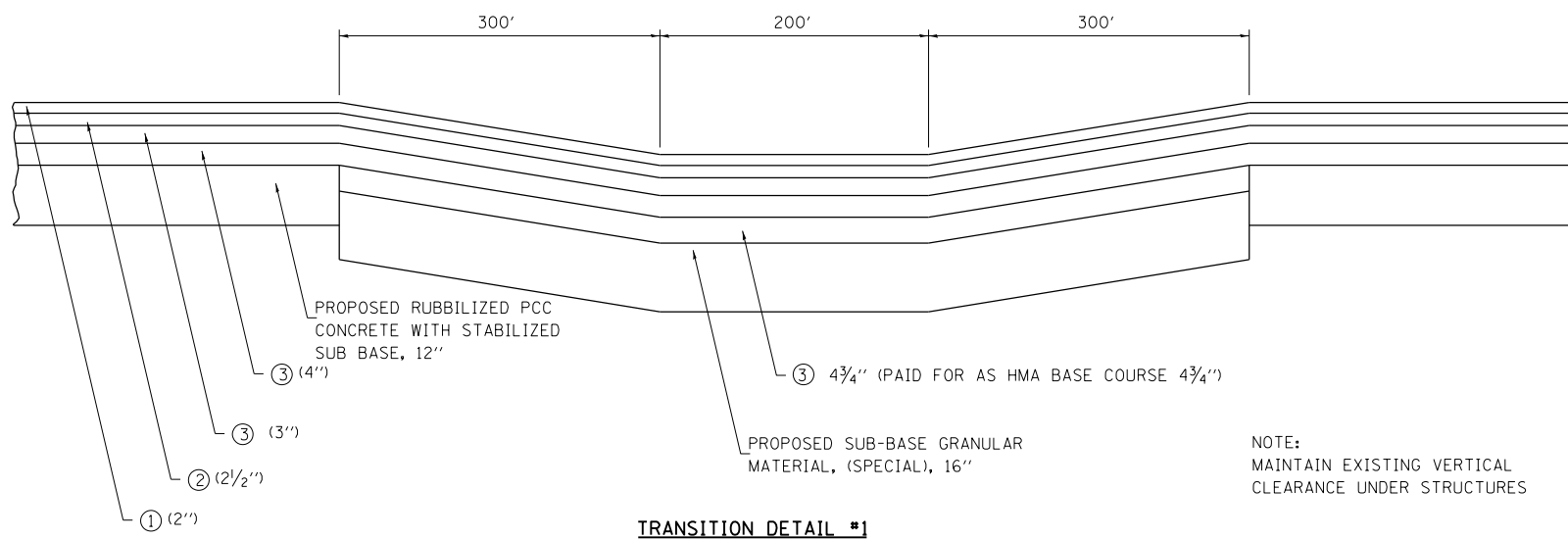
FILE NAME =	USER NAME = teasleyck	DESIGNED -	REVISED -
c:\pwork\pwork\teasleyck\d0148656\0774416-sht-details.dgn		DRAWN -	REVISED -
PLOT SCALE = 100.0000' / 1in.		CHECKED -	REVISED -
PLOT DATE = 8/17/2012		DATE -	REVISED -

**STATE OF ILLINOIS
DEPARTMENT OF TRANSPORTATION**

BUTT JOINT DETAILS

SCALE: NA SHEET NO. OF SHEETS STA. TO STA.

F.A. RTE.	SECTION	COUNTY	TOTAL SHEETS	SHEET NO.
70	(18-47,48,49)R	CUMBERLAND	30	17
CONTRACT NO. 74416				
ILLINOIS FED. AID PROJECT				

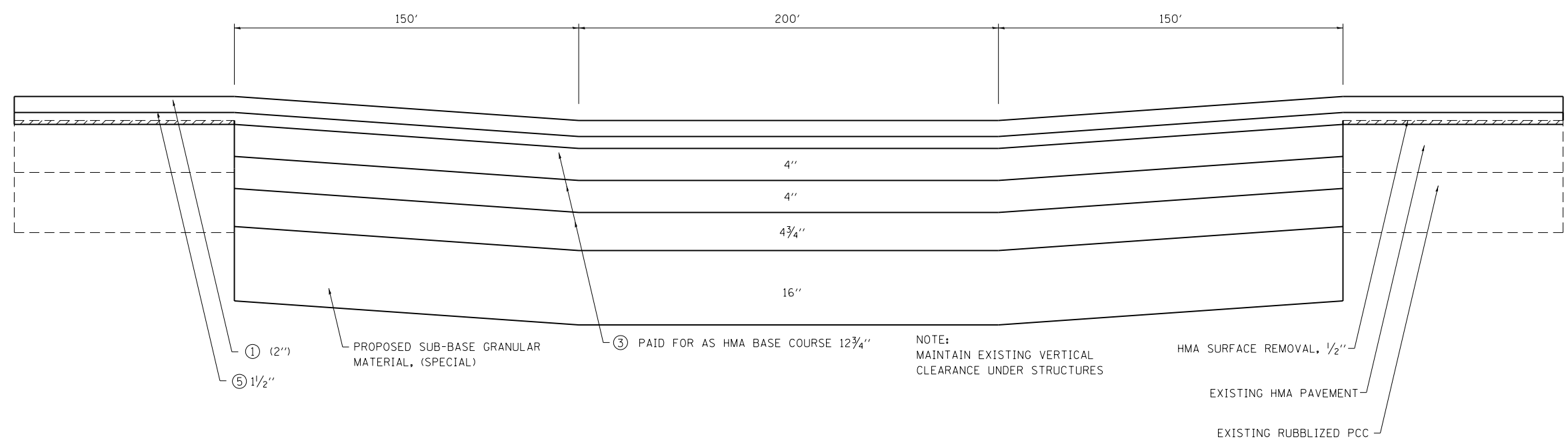
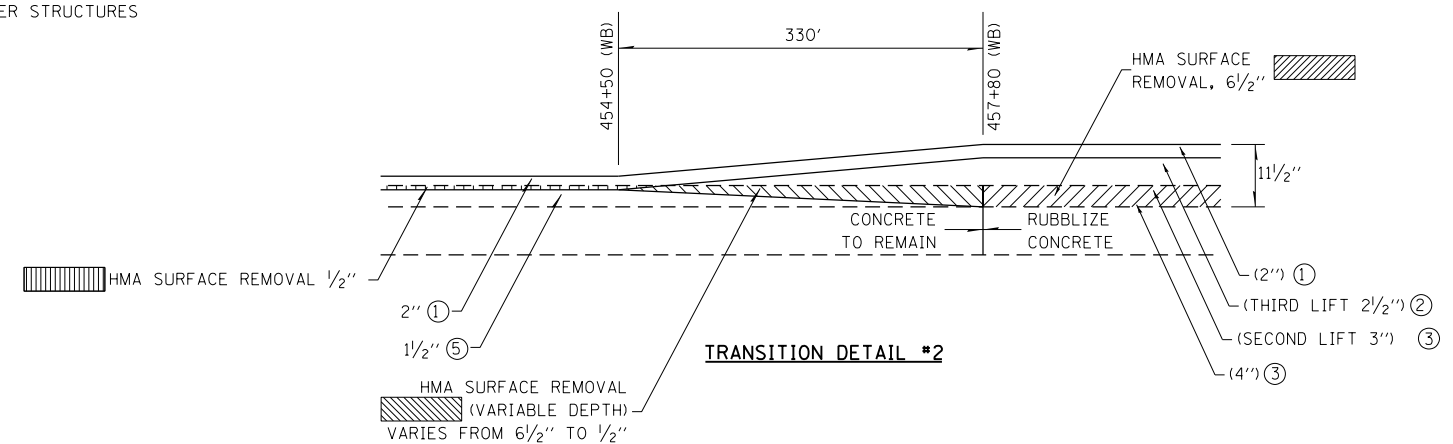


NOTE:
MAINTAIN EXISTING VERTICAL CLEARANCE UNDER STRUCTURES

TRANSITION DETAIL #1

STA. 344+62 TO STA. 352+62 (EB)
 STA. 430+30 TO STA. 438+30 (EB)
 STA. 525+68 TO STA. 533+68 (EB)
 STA. 525+94 TO STA. 533+94 (WB)
 STA. 617+42 TO STA. 625+42 (EB/WB)

- ① POLYMERIZED HMA SURFACE COURSE, STONE MATRIX ASPHALT, N80
- ② POLYMERIZED HMA BINDER COURSE, IL-19.0 FG, N105
- ③ HMA BINDER COURSE, IL-19.0, N90
- ⑤ POLYMERIZED HMA SURFACE COURSE, MIX "D", N105

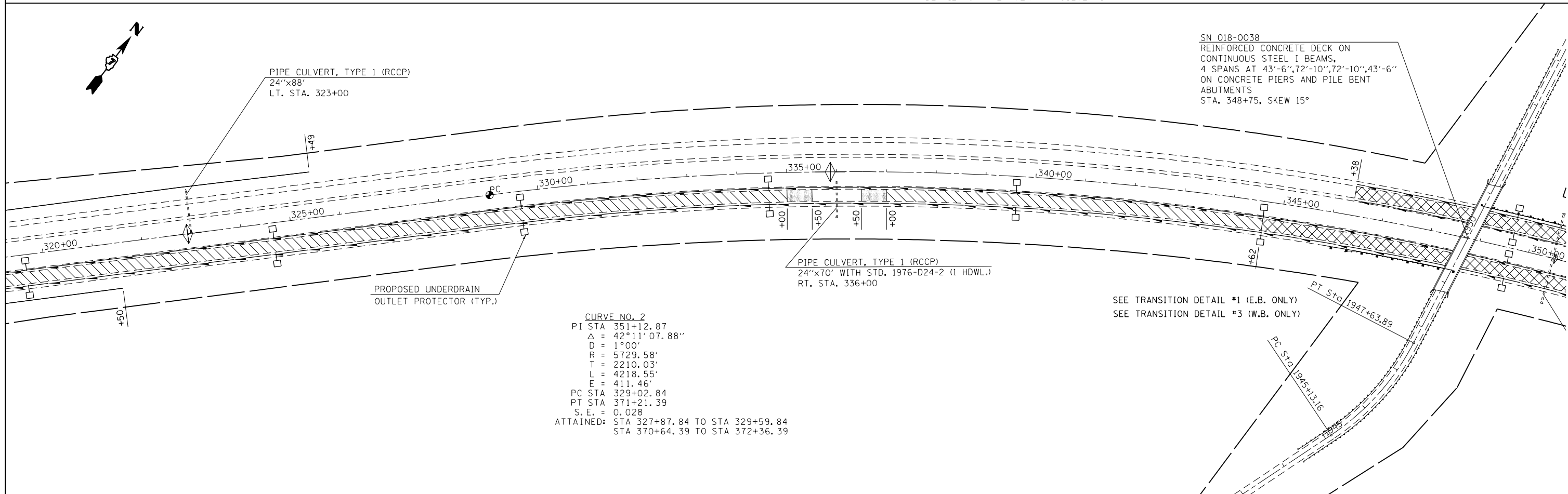
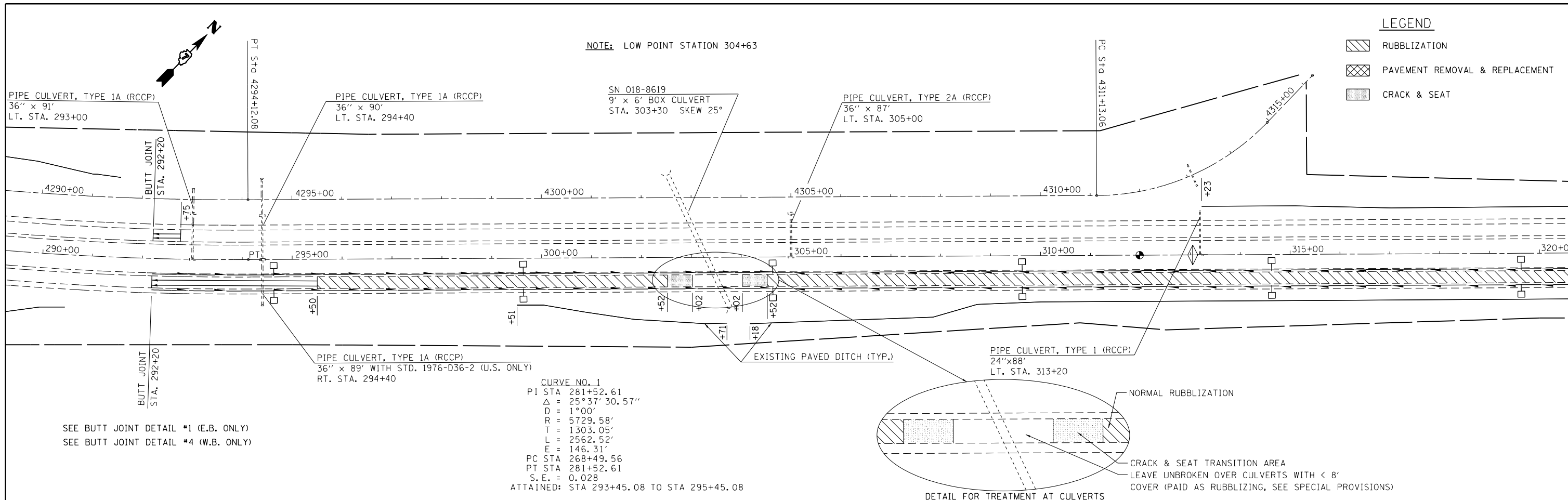


NOTE:
MAINTAIN EXISTING VERTICAL CLEARANCE UNDER STRUCTURES

TRANSITION DETAIL #3




STA. 346+38 TO STA. 351+38 (WB)
 STA. 432+05 TO STA. 437+05 (WB)

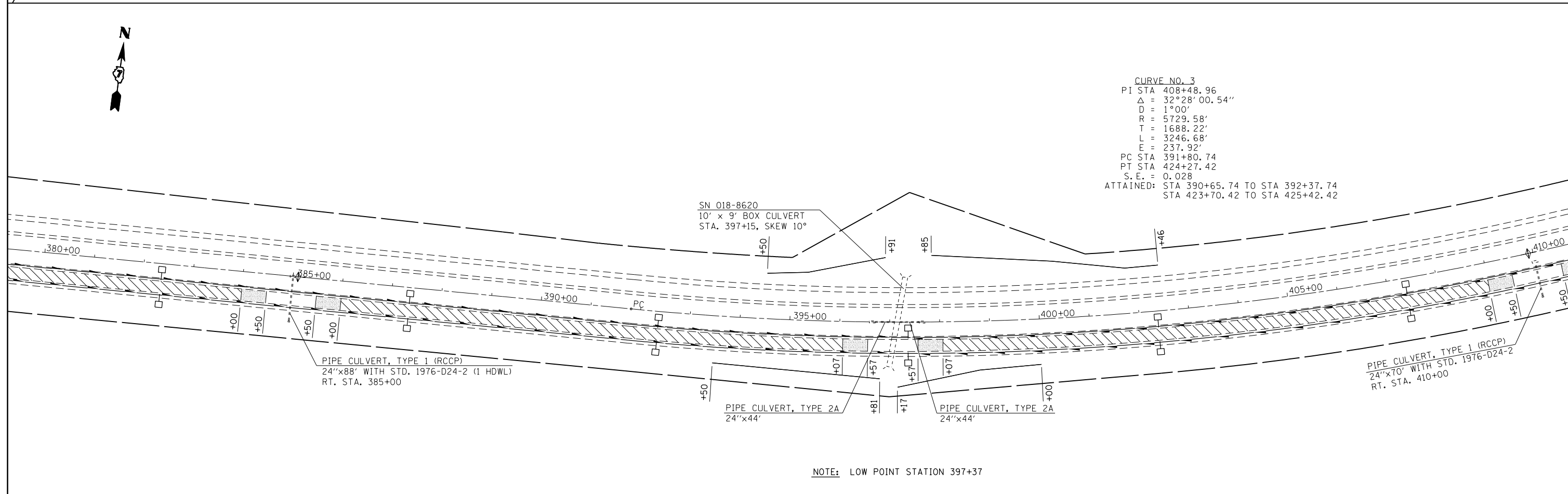
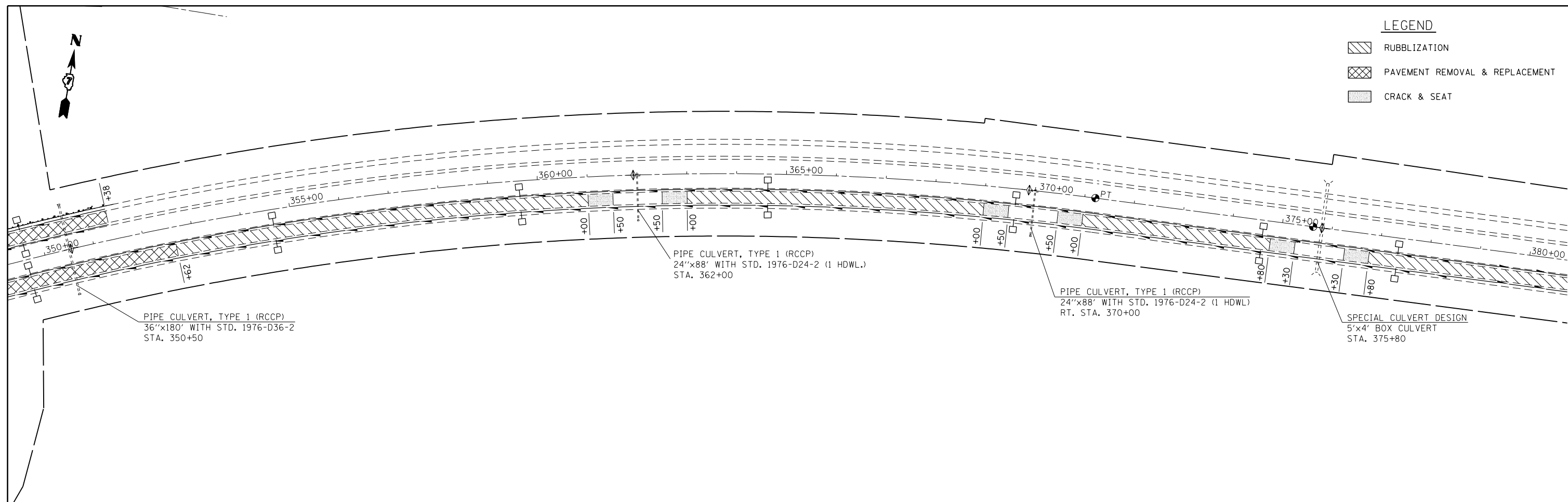
FILE NAME =	USER NAME = teasleyck	DESIGNED -	REVISED -	STATE OF ILLINOIS DEPARTMENT OF TRANSPORTATION	TRANSITION DETAILS			F.A. RTE.	SECTION	COUNTY	TOTAL SHEETS	SHEET NO.
ci:\pw\work\pwidot\teasleyck\d0148656\0774416-sht-details.dgn	PLOT SCALE = 100.0000' / 1" =	DRAWN -	REVISED -					70	(18-47,48,49)R	CUMBERLAND	30	18
	PLOT DATE = 8/17/2012	CHECKED -	REVISED -		SCALE: SHEET NO. OF SHEETS STA. TO STA.			CONTRACT NO. 74416				
		DATE -	REVISED -		ILLINOIS FED. AID PROJECT							



FILE NAME = c:\pwork\pwork\teasleyck\d0148656\d07	USER NAME = teasleyck	DESIGNED -	REVISED -	STATE OF ILLINOIS DEPARTMENT OF TRANSPORTATION	PLAN SHEET			F.A.I. RTE.	SECTION	COUNTY	TOTAL SHEETS	SHEET NO.
	4416-SHT-PLAN9.dgn	DRAWN -	REVISED -		SCALE: 100	SHEET NO. 1 OF 7 SHEETS	STA. 292+20 TO STA. 350+00	70	(18-47,48,49)R	CUMBERLAND	30	19
	PLOT SCALE = 200.0000' / in.	CHECKED -	REVISED -		CONTRACT NO. 74416							
	PLOT DATE = 8/17/2012	DATE -	REVISED -		ILLINOIS FED. AID PROJECT							

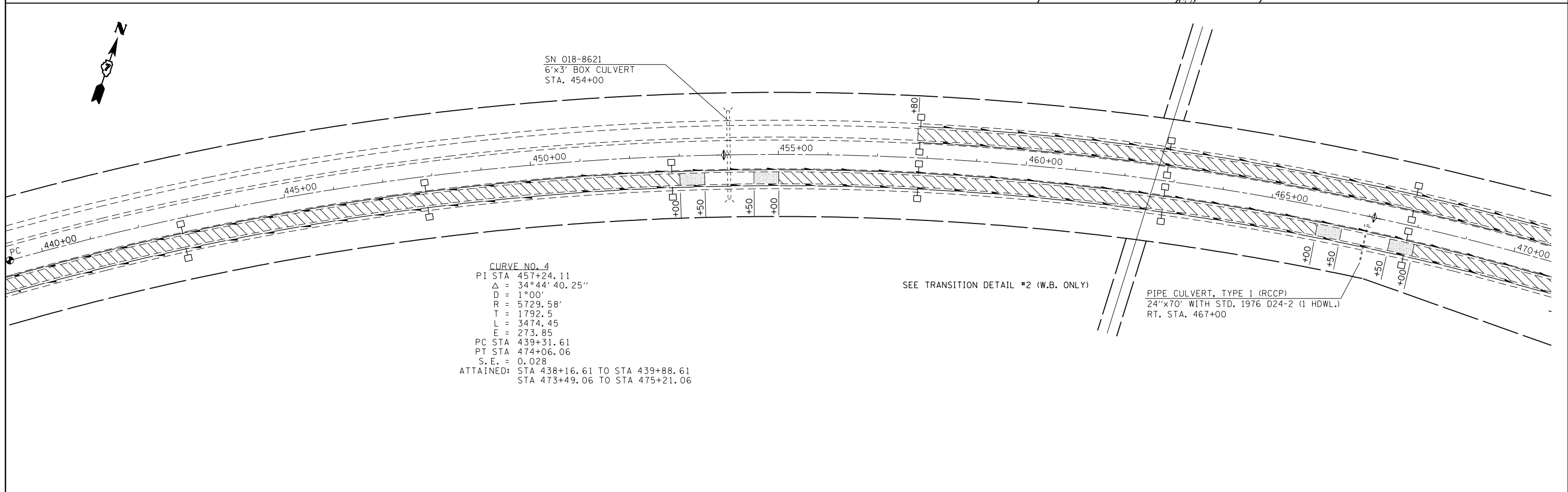
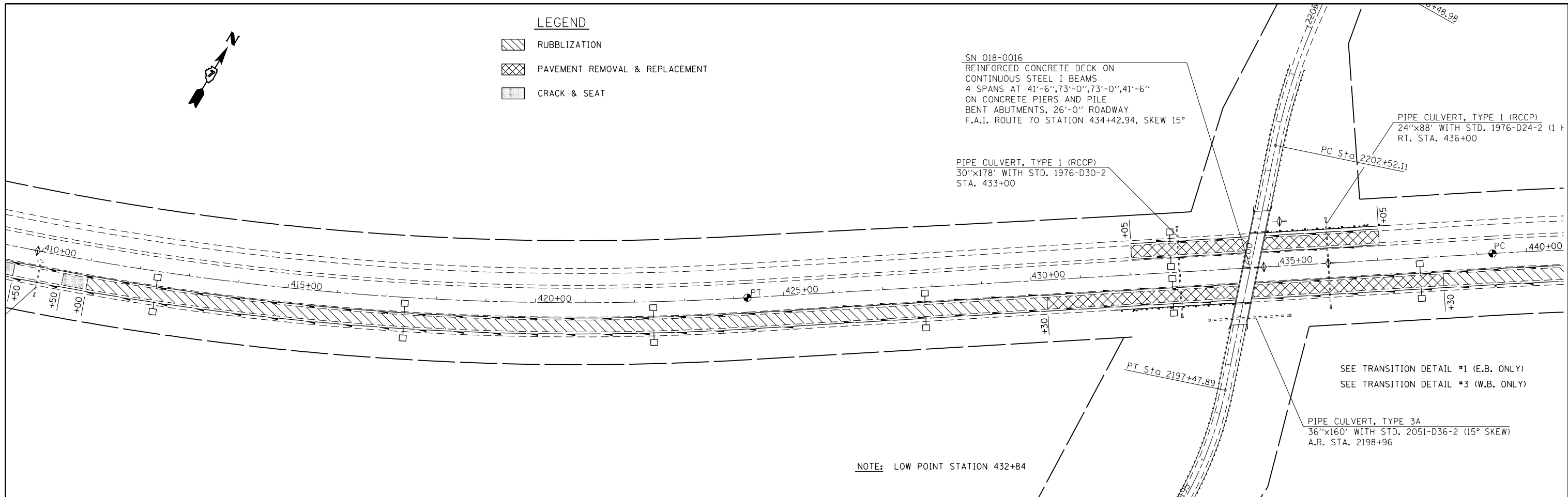
LEGEND

-  RUBBLIZATION
-  PAVEMENT REMOVAL & REPLACEMENT
-  CRACK & SEAT



NOTE: LOW POINT STATION 397+37

FILE NAME =	USER NAME = teasleyck	DESIGNED -	REVISED -	STATE OF ILLINOIS DEPARTMENT OF TRANSPORTATION	PLAN SHEET			F.A.I. RTE.	SECTION	COUNTY	TOTAL SHEETS	SHEET NO.
es:\pwork\pwork\teasleyck\d0148656\07	4416-SHT-PLAN9.dgn	DRAWN -	REVISED -		70	(18-47,48,49R)	CUMBERLAND	30	20			
	PLOT SCALE = 200.0000' / in.	CHECKED -	REVISED -		CONTRACT NO. 74416							
	PLOT DATE = 8/17/2012	DATE -	REVISED -		ILLINOIS FED. AID PROJECT							



CURVE NO. 4
 PI STA 457+24.11
 $\Delta = 34^{\circ}44'40.25''$
 $D = 1^{\circ}00'$
 $R = 5729.58'$
 $T = 1792.5$
 $L = 3474.45$
 $E = 273.85$
 PC STA 439+31.61
 PT STA 474+06.06
 S.E. = 0.028
 ATTAINED: STA 438+16.61 TO STA 439+88.61
 STA 473+49.06 TO STA 475+21.06




FILE NAME =	USER NAME = teasleyck	DESIGNED -	REVISED -
ei:\pw\work\pwidot\teasleyck\d0148656\07	4416-SHT-PLAN9.dgn	DRAWN -	REVISED -
	PLOT SCALE = 200.0000' / in.	CHECKED -	REVISED -
	PLOT DATE = 8/17/2012	DATE -	REVISED -

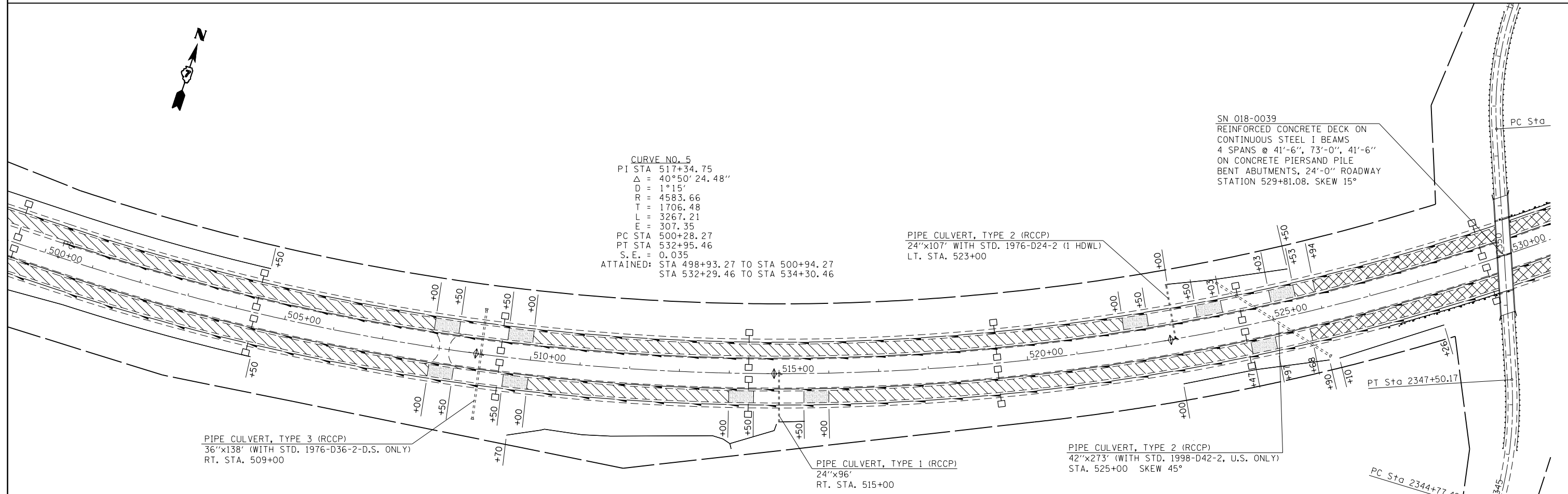
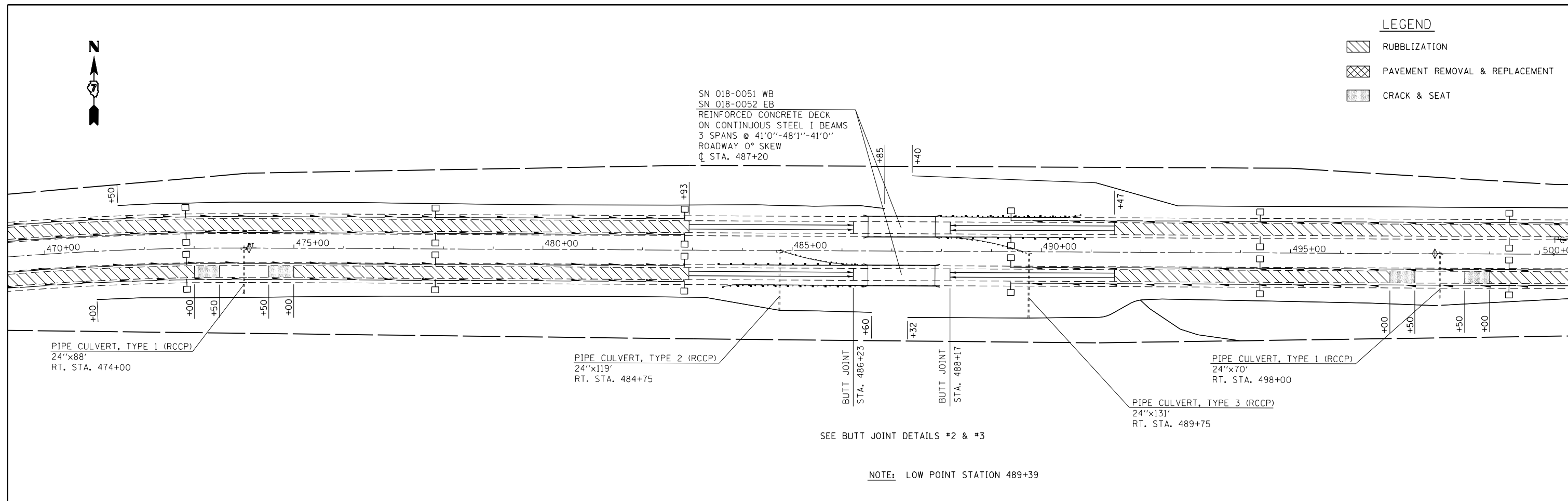
**STATE OF ILLINOIS
 DEPARTMENT OF TRANSPORTATION**

PLAN SHEET			
SCALE: 100	SHEET NO. 3 OF 7 SHEETS	STA. 410+00	TO STA. 470+00

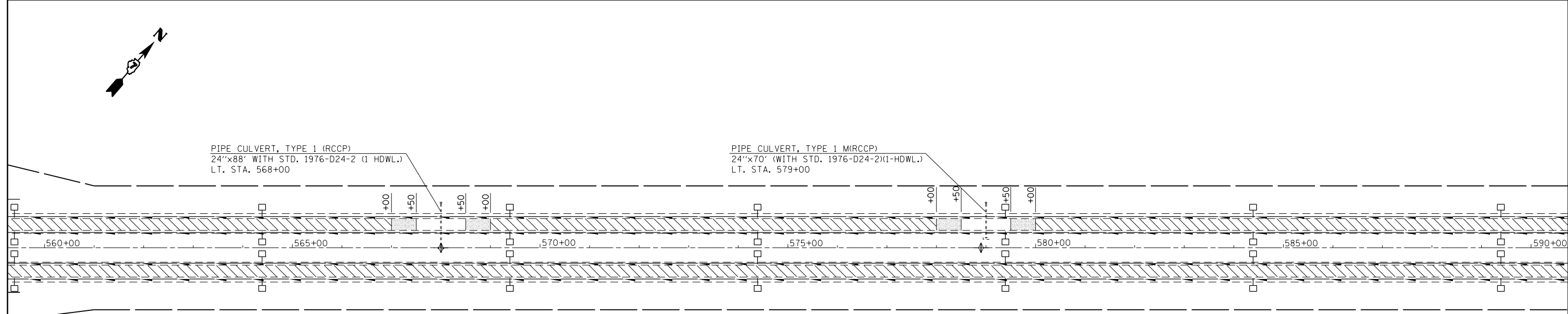
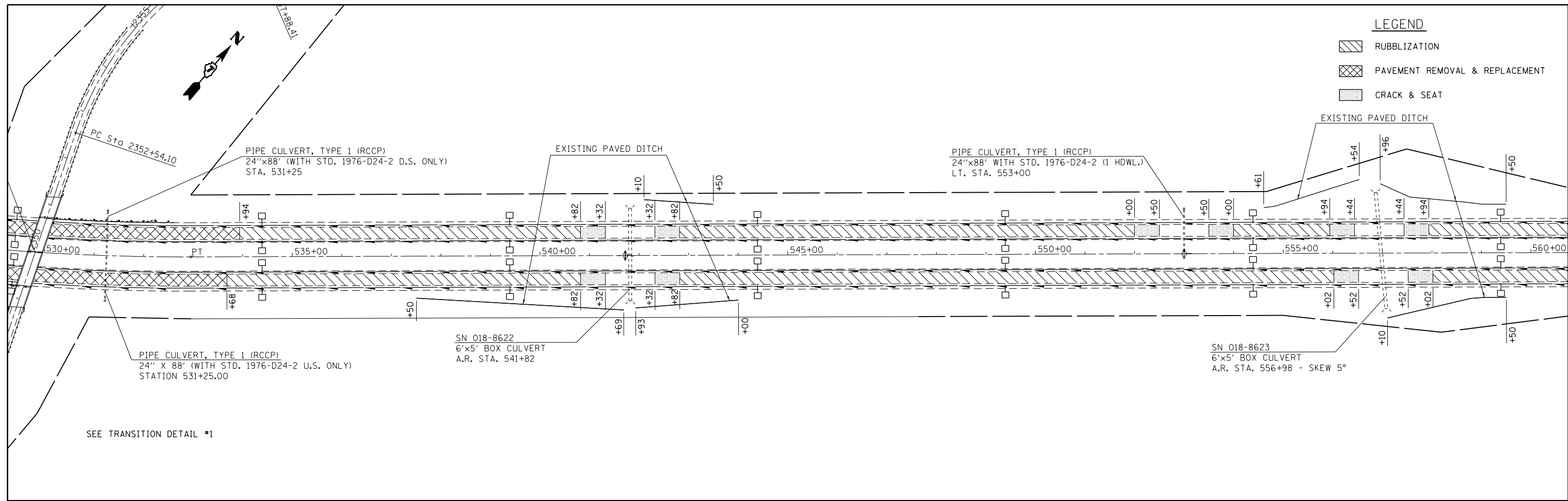
F.A.I. RTE.	SECTION	COUNTY	TOTAL SHEETS	SHEET NO.
70	(18-47,48,49)R	CUMBERLAND	30	21
CONTRACT NO. 74416				ILLINOIS FED. AID PROJECT

LEGEND

-  RUBBLIZATION
-  PAVEMENT REMOVAL & REPLACEMENT
-  CRACK & SEAT



FILE NAME = c:\pwork\pwork\dot\teasleyck\d0148656\07	USER NAME = teasleyck 4416-SHT-PLAN9.dgn	DESIGNED - DRAWN -	REVISED - REVISED -	STATE OF ILLINOIS DEPARTMENT OF TRANSPORTATION	PLAN SHEET		F.A.I. RTE. 70	SECTION (18-47,48,49R)	COUNTY CUMBERLAND	TOTAL SHEETS 30	SHEET NO. 22	
PLOT SCALE = 200.0000' / in.		CHECKED -	REVISED -		SCALE: 100	SHEET NO. 4 OF 7 SHEETS	STA. 470+00 TO STA. 530+00	CONTRACT NO. 74416		ILLINOIS FED. AID PROJECT		
PLOT DATE = 8/17/2012		DATE -	REVISED -									



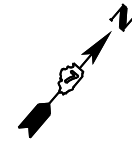
FILE NAME =	USER NAME = teasleyck	DESIGNED -	REVISED -
ei:\pwork\pwork\teasleyck\d0148656\074416-SHT-PLAN9.dgn		DRAWN -	REVISED -
	PLOT SCALE = 200.0000' / in.	CHECKED -	REVISED -
	PLOT DATE = 8/17/2012	DATE -	REVISED -

**STATE OF ILLINOIS
DEPARTMENT OF TRANSPORTATION**

PLAN SHEET

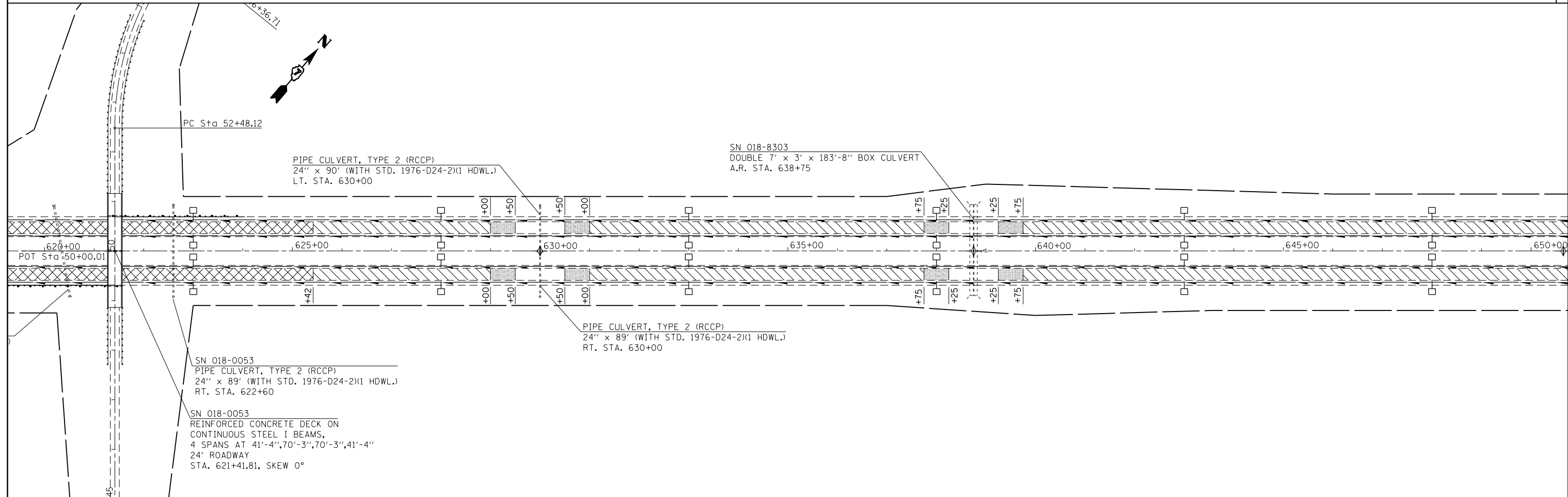
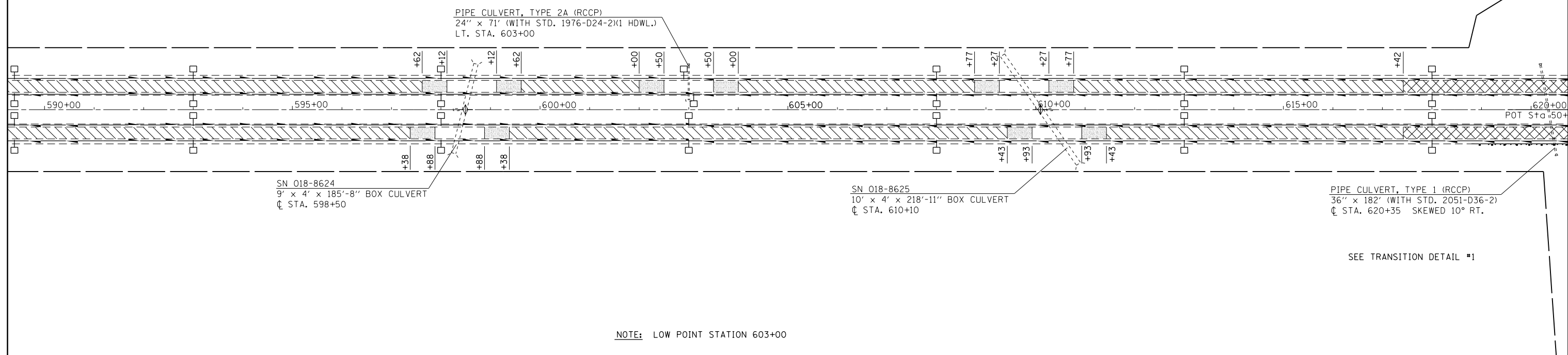
SCALE: 100 SHEET NO. 5 OF 7 SHEETS STA. 530+00 TO STA. 590+00

F.A.I. RTE.	SECTION	COUNTY	TOTAL SHEETS	SHEET NO.
70	(18-47,48,49)R	CUMBERLAND	30	23
CONTRACT NO. 74416			ILLINOIS FED. AID PROJECT	



LEGEND

	RUBBLIZATION
	PAVEMENT REMOVAL & REPLACEMENT
	CRACK & SEAT



FILE NAME =
 c:\pwork\pwork\teasleyck\d0148656\074416-SHT-PLAN9.dgn

USER NAME = teasleyck
 4416-SHT-PLAN9.dgn
 PLOT SCALE = 200.0000' / in.
 PLOT DATE = 8/17/2012

DESIGNED -
 DRAWN -
 CHECKED -
 DATE -

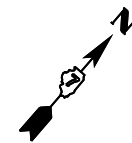
REVISED -
 REVISED -
 REVISED -
 REVISED -

**STATE OF ILLINOIS
 DEPARTMENT OF TRANSPORTATION**

PLAN SHEET

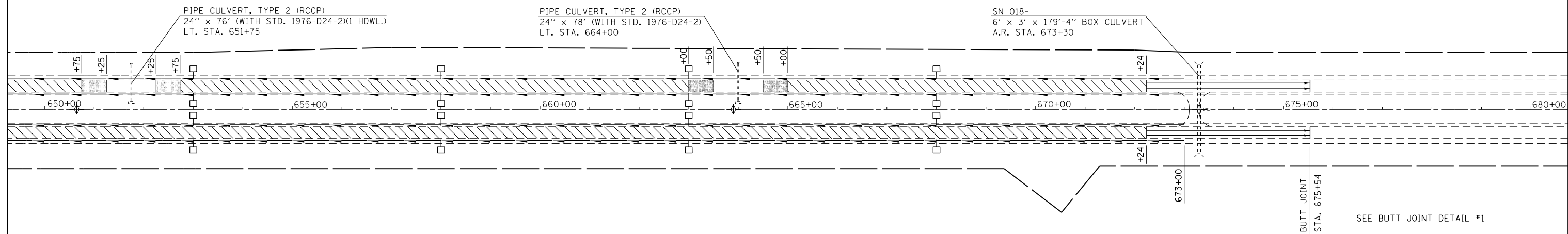
SCALE: 100 SHEET NO. 6 OF 7 SHEETS STA. 590+00 TO STA. 650+00

F.A.I. RTE.	SECTION	COUNTY	TOTAL SHEETS	SHEET NO.
70	(18-47,48,49)R	CUMBERLAND	30	24
CONTRACT NO. 74416			ILLINOIS FED. AID PROJECT	



LEGEND

- RUBBLIZATION
- CRACK & SEAT



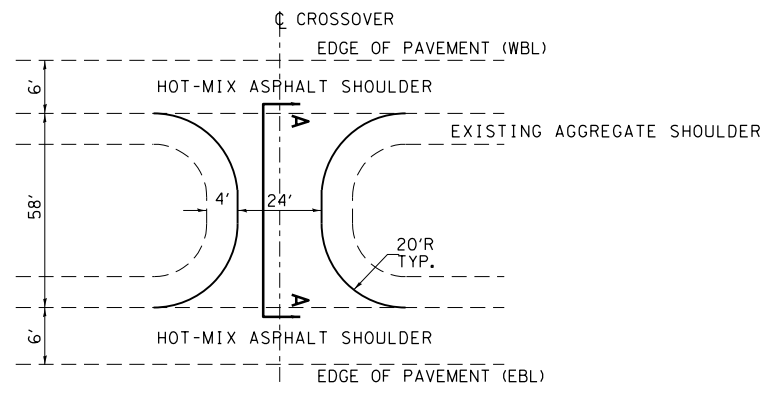
FILE NAME =	USER NAME = teasleyck	DESIGNED -	REVISED -
ei:\pw\work\p\idot\teasleyck\d0148656\0774416-SHT-PLAN9.dgn		DRAWN -	REVISED -
	PLOT SCALE = 200.0000' / in.	CHECKED -	REVISED -
	PLOT DATE = 8/17/2012	DATE -	REVISED -

**STATE OF ILLINOIS
DEPARTMENT OF TRANSPORTATION**

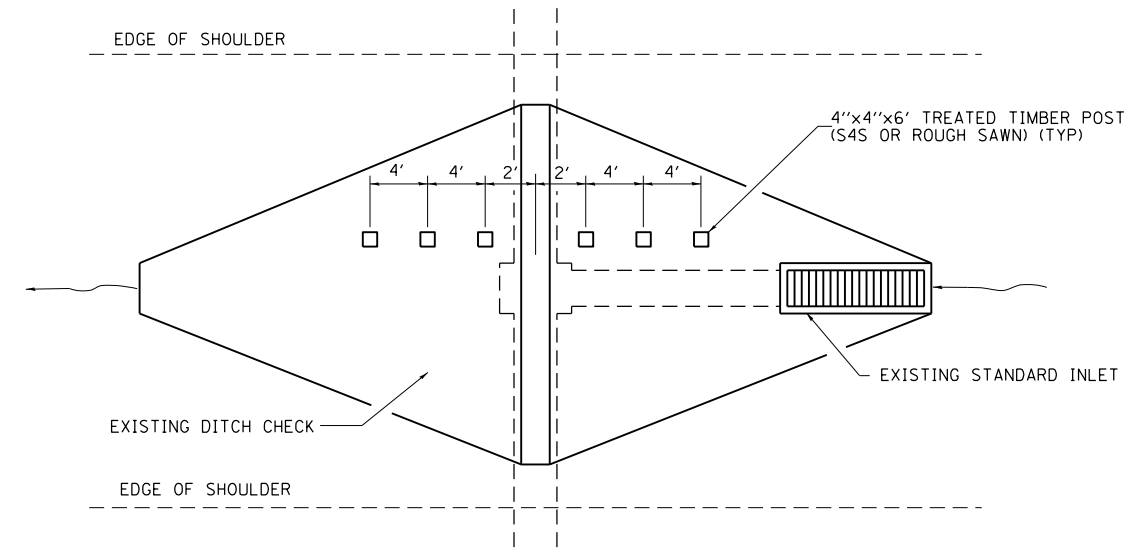
PLAN SHEET

SCALE: 100 SHEET NO. 7 OF 7 SHEETS STA. 650+00 TO STA. 675+54

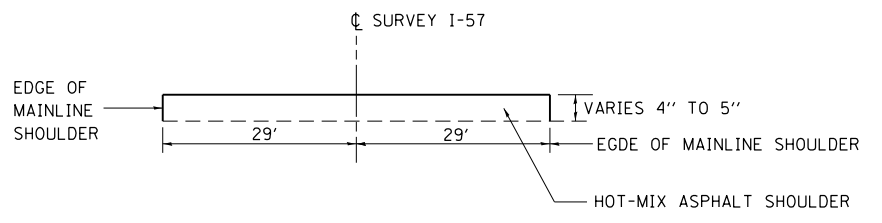
F.A.I. RTE.	SECTION	COUNTY	TOTAL SHEETS	SHEET NO.
70	(18-47,48,49)R	CUMBERLAND	30	25
CONTRACT NO. 74416				
<small>ILLINOIS FED. AID PROJECT</small>				



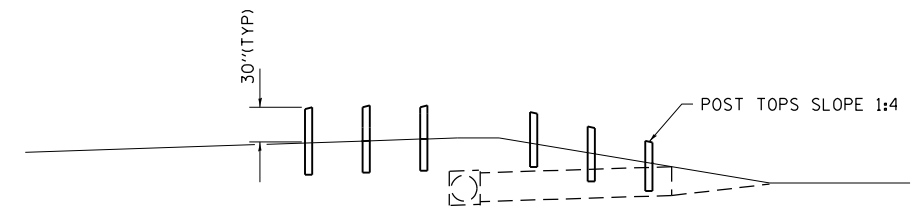
DETAIL OF MEDIAN CROSSOVER



PLAN VIEW



SECTION A-A



PROFILE VIEW

DETAIL OF GUARD POSTS

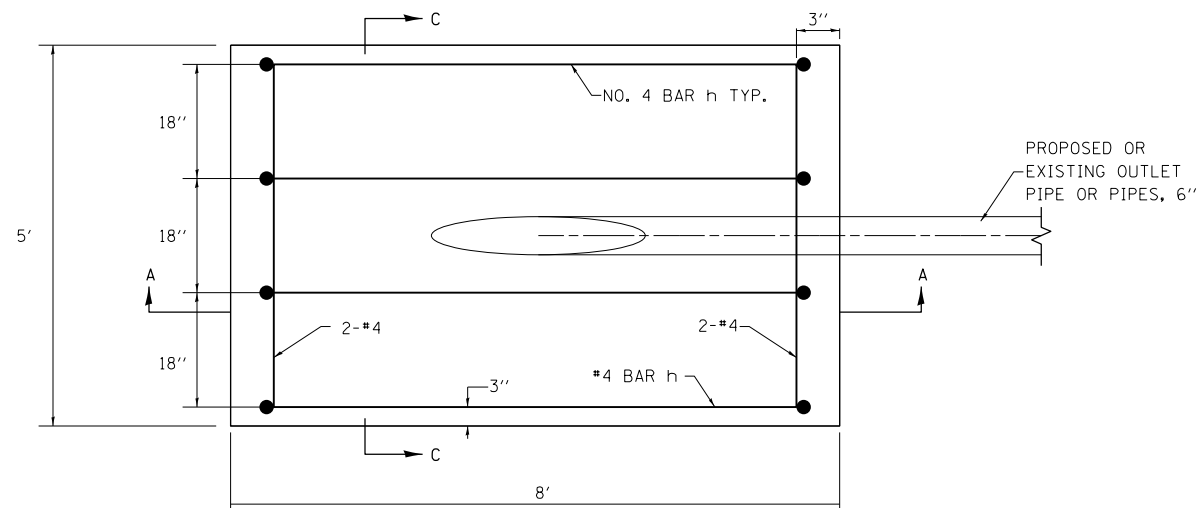
GUARD POST SCHEDULE		
MEDIAN STATION	LOCATION	QTY (EACH)
313+47	DITCH CHECK	6
323+20	DITCH CHECK	6
336+06	DITCH CHECK	6
348+30	SN 018-0038	4
349+43	SN 018-0038	28
369+96	DITCH CHECK	6
375+70	DITCH CHECK	6
385+04	DITCH CHECK	6
397+20	DITCH CHECK	6
434+20	SN 018-0016	21
435+25	SN 018-0016	21
497+72	DITCH CHECK	6
514+95	DITCH CHECK	6
529+62	SN 018-0039	4
530+65	SN 018-0039	20
553+27	DITCH CHECK	6
568+13	DITCH CHECK	6
598+88	DITCH CHECK	6
621+33	SN 018-0053	4
622+35	SN 018-0053	10
630+27	DITCH CHECK	6
638+95	DITCH CHECK	6
TOTAL =		196

FILE NAME =	USER NAME = teasleyck	DESIGNED -	REVISED - MKS 03-07
c:\pwork\pwork\teasleyck\d0148656\07	4416-sht-details.dgn	DRAWN -	REVISED - MKS 04-08
	PLOT SCALE = 100.0000' / 1in.	CHECKED -	REVISED -
	PLOT DATE = 8/17/2012	DATE -	REVISED -

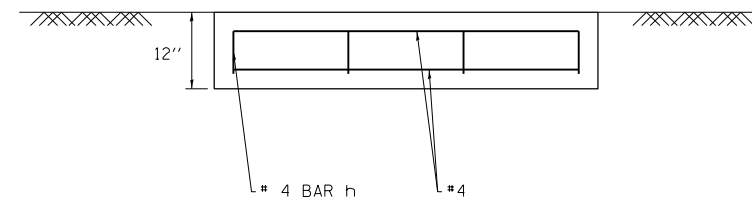
**STATE OF ILLINOIS
DEPARTMENT OF TRANSPORTATION**

MEDIAN CROSS OVER AND WOOD POST BARRIER DETAIL			
SCALE:	SHEET NO.	OF SHEETS	STA. TO STA.

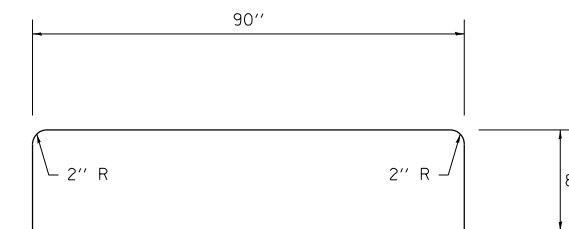
F.A. RTE.	SECTION	COUNTY	TOTAL SHEETS	SHEET NO.
70	(18-47,48,49)R	CUMBERLAND	30	26
				CONTRACT NO. 74416
ILLINOIS FED. AID PROJECT				



PLAN VIEW



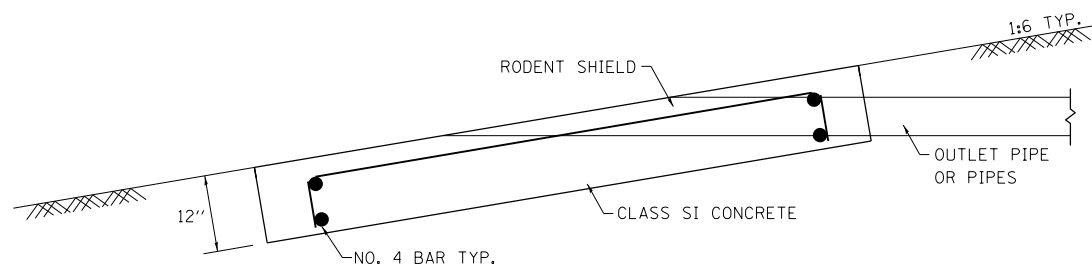
SECTION C-C



#4 h BAR

NOTES

- See Standard 601101 for details of rodent shields.
- The outlet pipe or pipes shall be located as close as possible to the center of the outlet protector.
- The last 10' of outlet pipe shall be schedule 40 PVC.
- The rebars may be cut or relocated to accommodate pipe.
- Cut outlet pipe on a bevel to match finished surface of surrounding PCC.



SECTION A-A

OUTLET PROTECTOR BILL OF MATERIALS

PAY ITEM	UNIT	QUANTITIES PER EACH OUTLET PROTECTOR	EASTBOUND QUANTITIES	WESTBOUND QUANTITIES	TOTAL QUANTITIES
CLASS SI CONCRETE (MISCELLANEOUS)	CU YD	1.5	228	147	375
REINFORCING BARS	LB	35.6	5411	3489	8900
RODENT SHIELDS	EACH	1	152	98	250

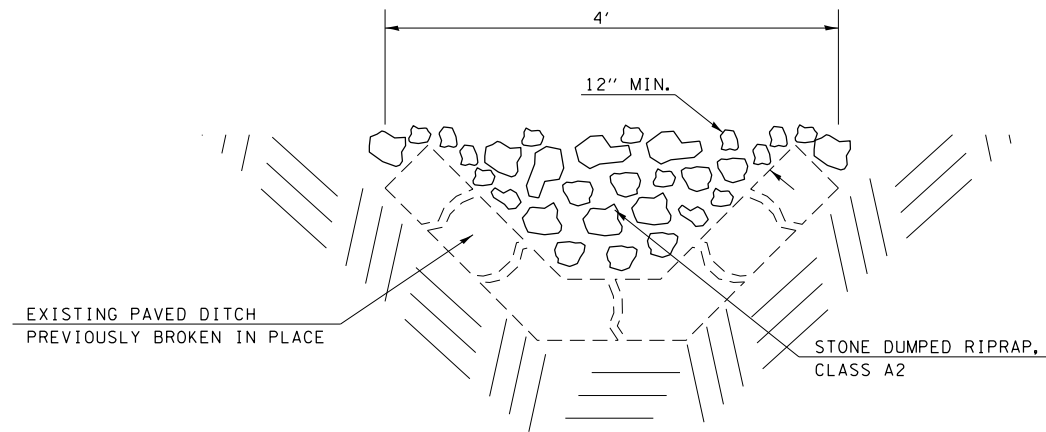
FILE NAME =	USER NAME = teasleyck	DESIGNED -	REVISED -
ct:\pw\work\p\idot\teasleyck\d0148656\0774416-sht-details.dgn		DRAWN -	REVISED -
PLOT SCALE = 100.0000' / 1in.		CHECKED -	REVISED -
PLOT DATE = 8/17/2012		DATE -	REVISED -

STATE OF ILLINOIS
DEPARTMENT OF TRANSPORTATION

OUTLET PROTECTOR DETAILS

SCALE: NA SHEET NO. OF SHEETS STA. TO STA.

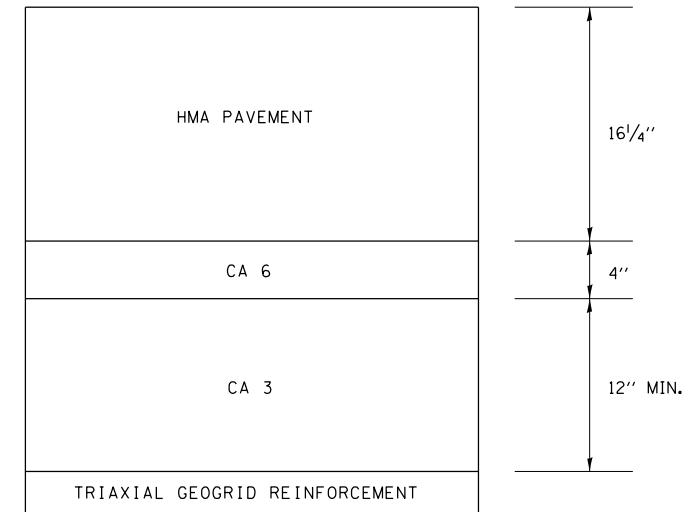
F.A.I. RTE.	SECTION	COUNTY	TOTAL SHEETS	SHEET NO.
70	(18-47,48,49)R	CUMBERLAND	30	27
CONTRACT NO. 74416				
ILLINOIS FED. AID PROJECT				



DETAIL OF AGGREGATE DITCH

STONE DUMPED RIPRAP, TYPE A2			
STATION TO STATION	LENGTH (FEET)	QTY (SQ YD)	
EASTBOUND			
299+51 TO 303+71	420	187	
304+18 TO 321+50	1732	770	
393+50 TO 396+81	331	147	
397+17 TO 400+00	283	126	
471+00 TO 486+60	1560	693	
487+32 TO 504+50	1718	763	
492+00 TO 496+00	400	89	
509+70 TO 515+00	530	235	
523+00 TO 525+90	290	129	
526+10 TO 528+26	216	96	
537+50 TO 541+69	419	186	
541+93 TO 544+00	207	92	
557+10 TO 559+50	240	107	
TOTAL =		3620	
WESTBOUND			
313+23 TO 325+49	1226	545	
394+50 TO 396+91	241	107	
397+85 TO 402+46	461	205	
471+50 TO 486+85	1535	682	
487+40 TO 504+50	1710	760	
523+00 TO 525+50	250	111	
542+10 TO 543+50	140	669	
554+61 TO 556+54	193	86	
556+96 TO 559+50	254	113	
TOTAL =		3278	

DETAIL OF SUBBASE GRANULAR MATERIAL (SPECIAL)



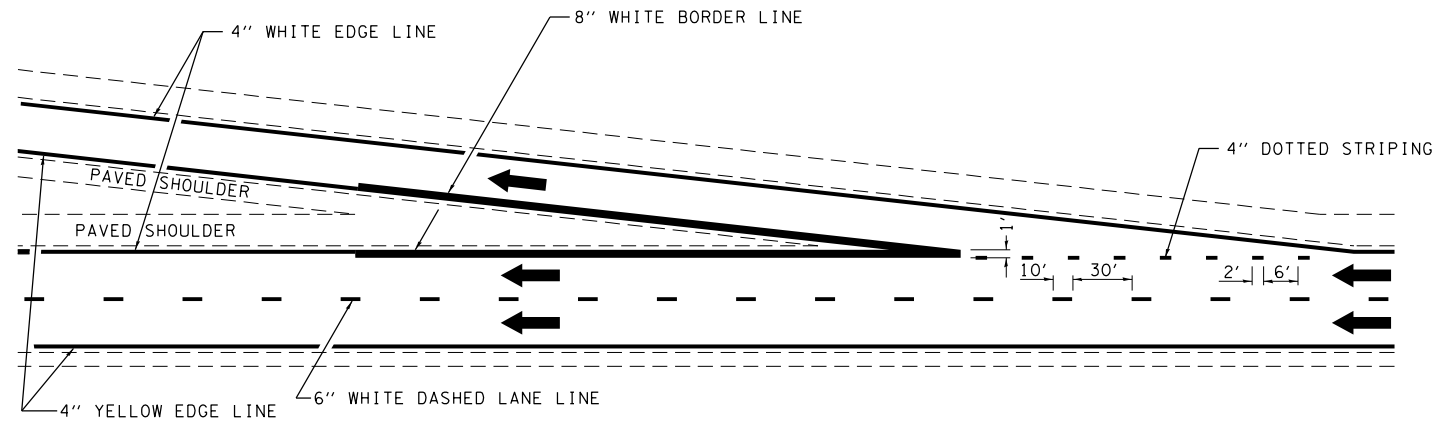
- E. B. STA. 344+62 TO STA. 352+62
- E. B. STA. 430+30 TO STA. 438+30
- E. B. STA. 525+68 TO STA. 533+68
- E. B. STA. 617+42 TO STA. 625+42
- W. B. STA. 346+38 TO STA. 351+38
- W. B. STA. 432+05 TO STA. 437+05
- W. B. STA. 525+94 TO STA. 533+94
- W. B. STA. 617+42 TO STA. 625+42

NOTES:

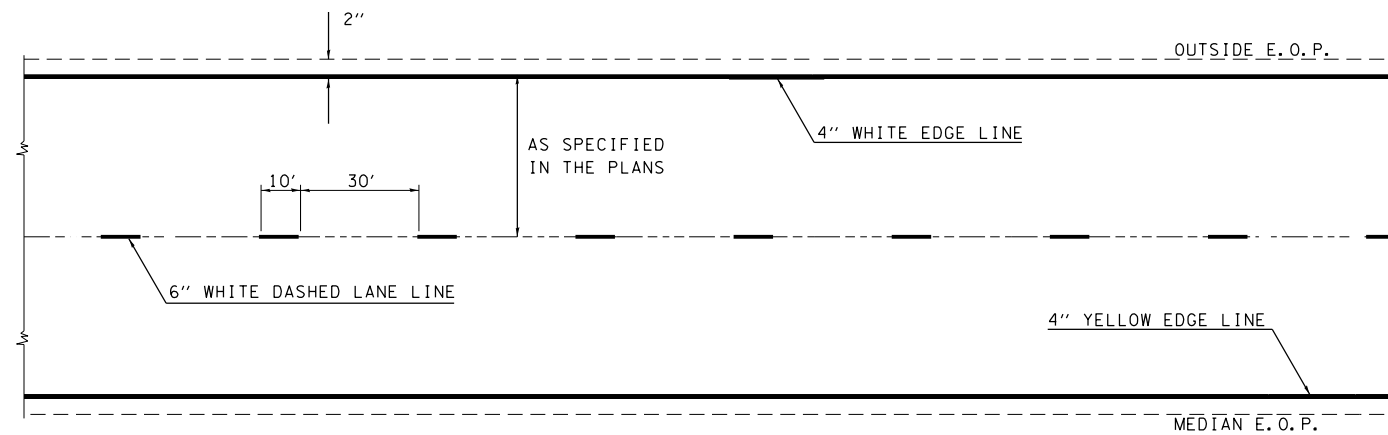
1. THE FIRST LIFT OF HMA BINDER COURSE SHALL BE PLACED WITHIN 4 DAYS OF THE START OF PAVEMENT REMOVAL OPERATION.

SUBBASE GRANULAR MATERIAL (SPECIAL) SCHEDULE

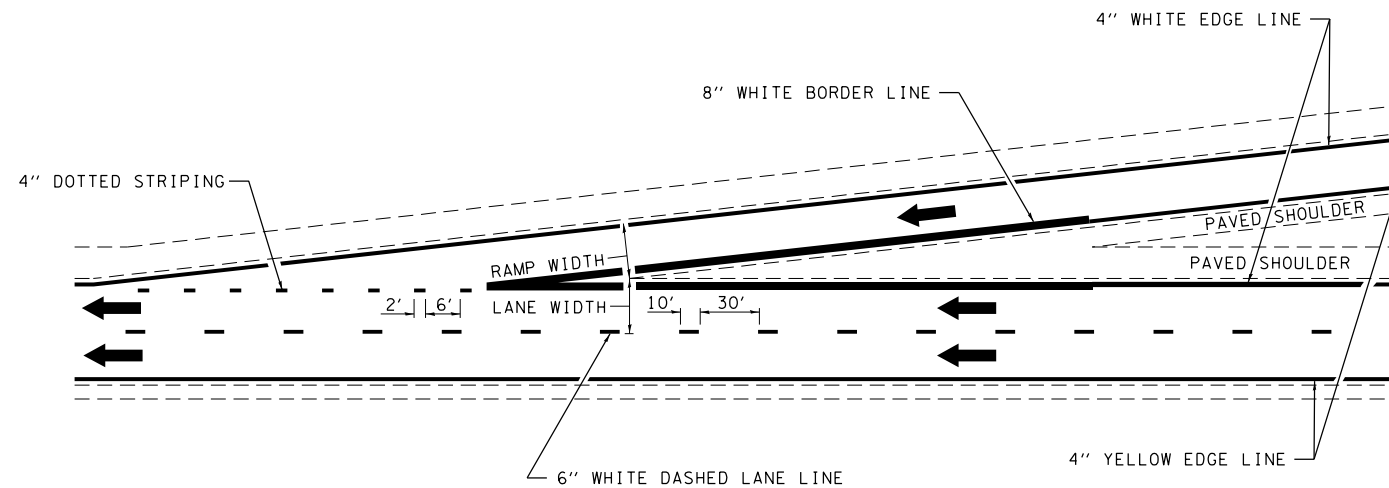
STATION TO STATION	LENGTH (FEET)	EARTH EXCAVATION (SPECIAL) (CU YD)	TRIAXIAL GEOGRID REINFORCEMENT (SQ YD)	SUBBASE GRANULAR MATERIAL (SPECIAL) (CU YD)
EASTBOUND				
344+62 TO 352+62	800	959.2	2133.3	948.1
430+30 TO 438+30	800	959.2	2133.3	948.1
525+68 TO 533+68	800	959.2	2133.3	948.1
617+42 TO 625+42	800	959.2	2133.3	948.1
EASTBOUND TOTALS		3837	8533.3	3792
WESTBOUND				
346+38 TO 351+38	500	642.6	1333.3	592.6
432+05 TO 437+05	500	642.6	1333.3	592.6
525+94 TO 533+94	800	959.2	2133.3	948.1
617+42 TO 625+42	800	959.2	2133.3	948.1
WESTBOUND TOTALS		3204	6933.3	3081
TOTALS		7041	15467	6874



TYPICAL EXIT RAMP MARKING



TYPICAL CENTERLINE & EDGELINE MARKINGS



TYPICAL ENTRANCE RAMP MARKING

NOT TO SCALE

DISTRICT 7 DETAIL NO. 7800002

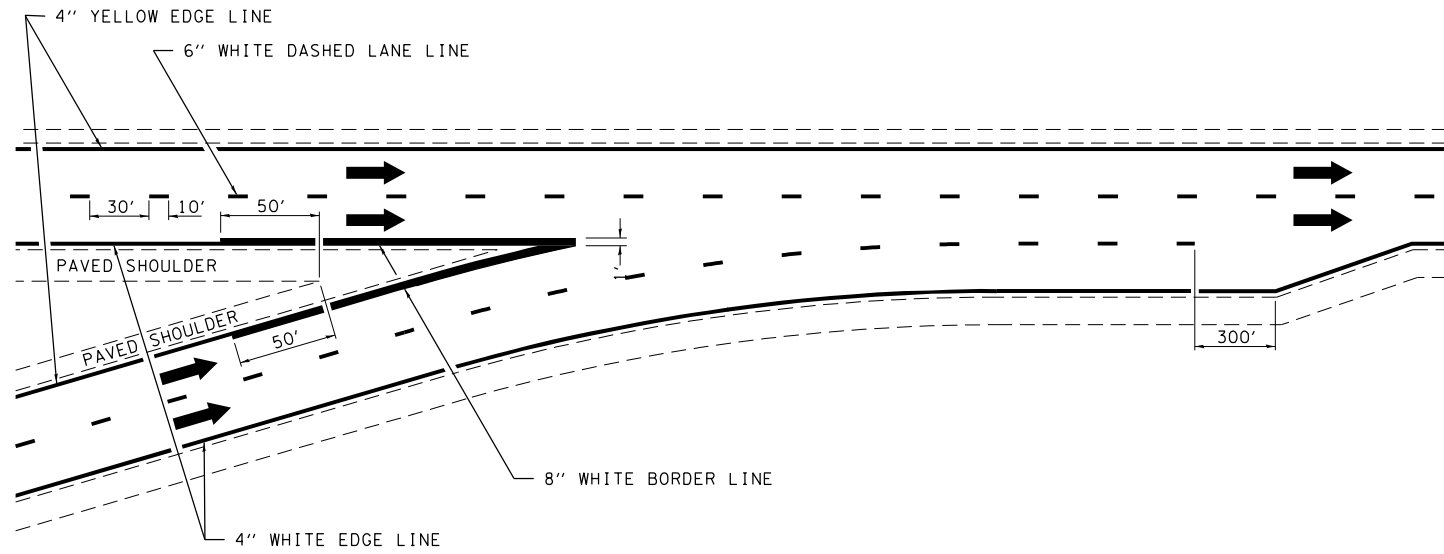
FILE NAME =	USER NAME = teasleyck	DESIGNED -	REVISED - DRM 08-04
ei:\pwork\pwork\teasleyck\d0148656\07	4416-sht-details.dgn	DRAWN -	REVISED - MKS 04-08
	PLOT SCALE = 100.0000' / in.	CHECKED -	REVISED - DRM 01-09
	PLOT DATE = 8/17/2012	DATE -	REVISED - DRM 12-10

**STATE OF ILLINOIS
DEPARTMENT OF TRANSPORTATION**

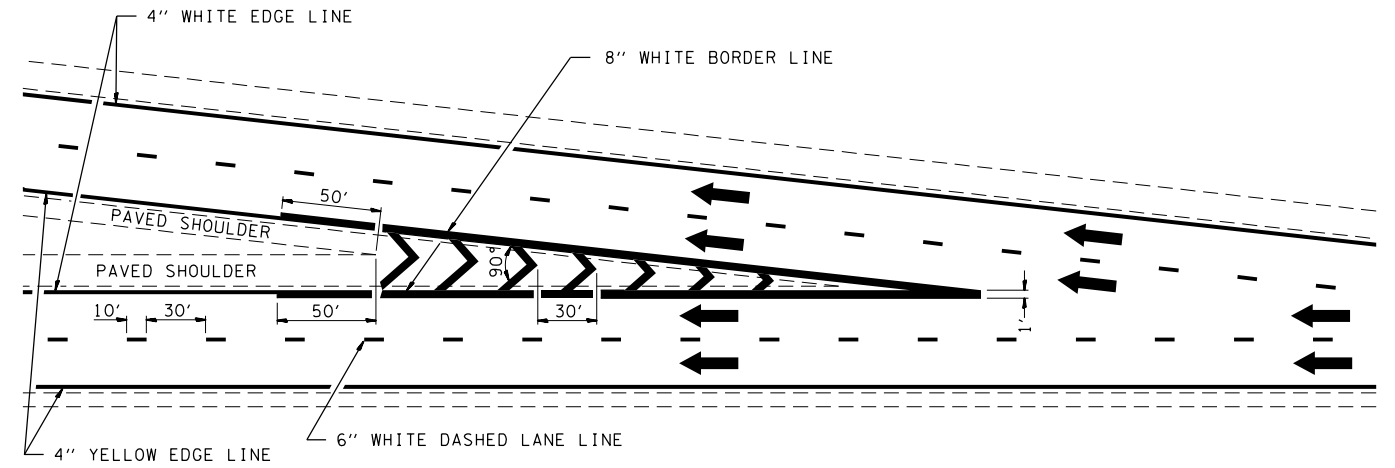
TYPICAL APPLICATIONS OF INTERSTATE PAVEMENT MARKING

SCALE: NA SHEET NO. 1 OF 2 SHEETS STA. TO STA.

F.A.I. RTE.	SECTION	COUNTY	TOTAL SHEETS	SHEET NO.
70	(18-47,48,49)R	CUMBERLAND	30	29
CONTRACT NO. 74416				
FED. ROAD DIST. NO. ILLINOIS FED. AID PROJECT				

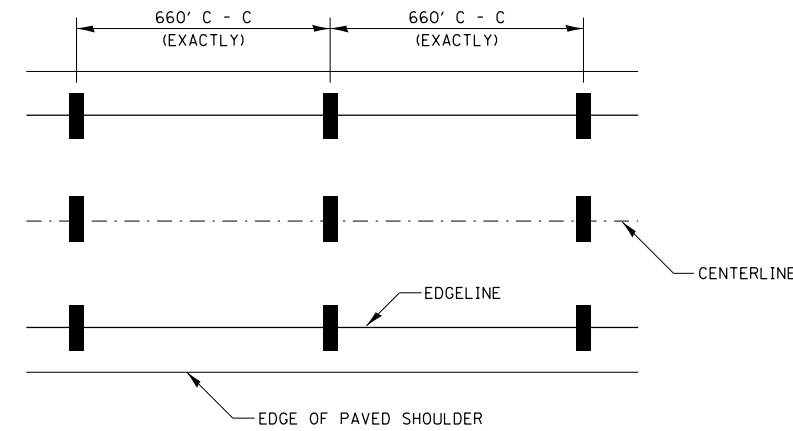


TYPICAL CONVERGENCE MARKING

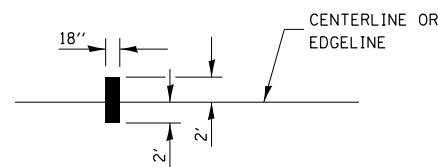


TYPICAL DIVERGENCE MARKING

AERIAL SPEED CHECK ZONES



IT WILL BE NECESSARY TO HAVE A REPRESENTATIVE OF THE STATE POLICE PRESENT SO THAT THE ACCURACY OF MEASUREMENT CAN BE ATTESTED TO IN COURT.



NOT TO SCALE

DISTRICT 7 DETAIL NO. 7800002

FILE NAME =	USER NAME = teasleyck	DESIGNED -	REVISED - MMO 12-99
ci:\pwork\pwork\pwork\teasleyck\d0148656\07	4416-sht-details.dgn	DRAWN -	REVISED - DRM 08-04
	PLOT SCALE = 100.0000' / in.	CHECKED -	REVISED - MKS 04-08
	PLOT DATE = 8/17/2012	DATE -	REVISED - DRM 01-09

STATE OF ILLINOIS
DEPARTMENT OF TRANSPORTATION

TYPICAL APPLICATIONS OF INTERSTATE PAVEMENT MARKING

SCALE: NA SHEET NO. 2 OF 2 SHEETS STA. TO STA.

F.A.I. RTE.	SECTION	COUNTY	TOTAL SHEETS	SHEET NO.
70	(18-47,48,49)R	CUMBERLAND	30	30
CONTRACT NO. 74416				
FED. ROAD DIST. NO. ILLINOIS FED. AID PROJECT				