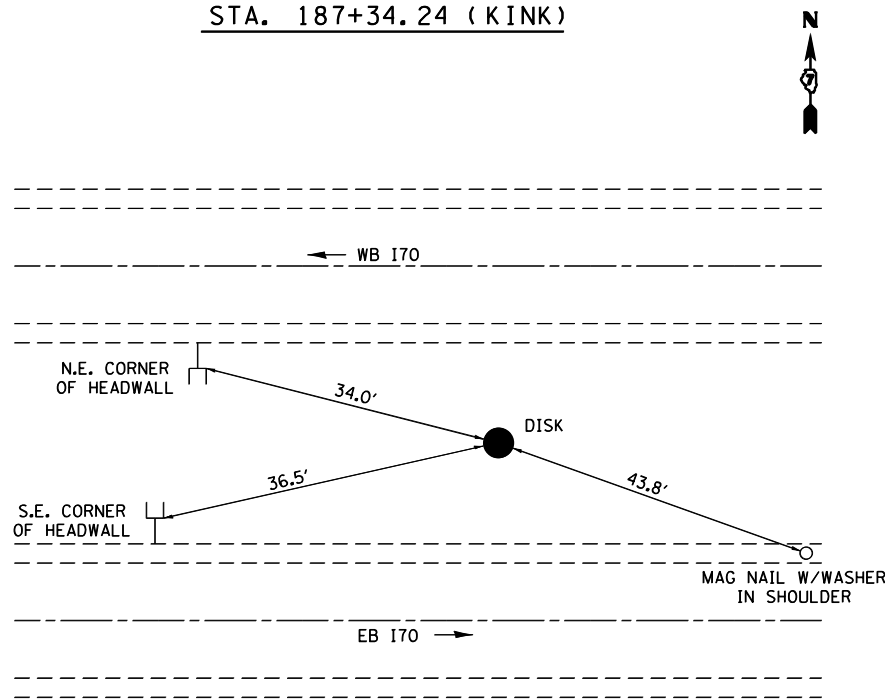
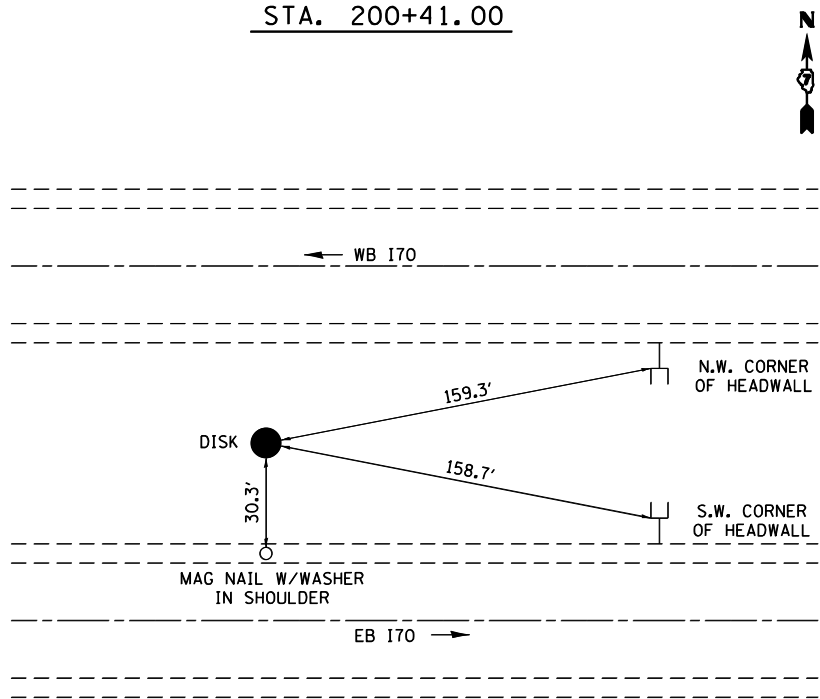


DISK #302
STA. 187+34.24 (KINK)



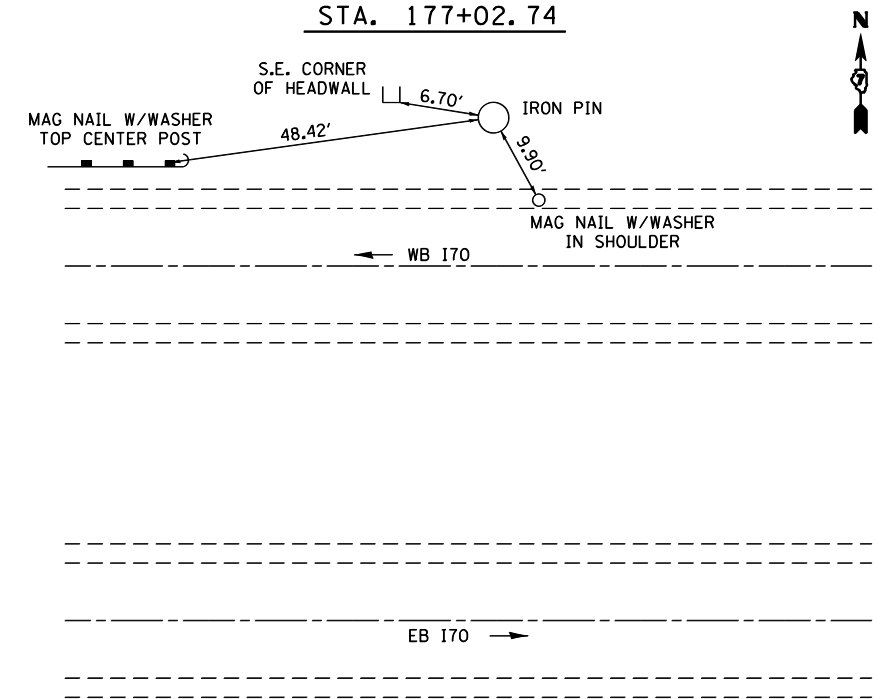
NOTE: NOT DRAWN TO SPECIFIC SCALE

DISK #301
STA. 200+41.00



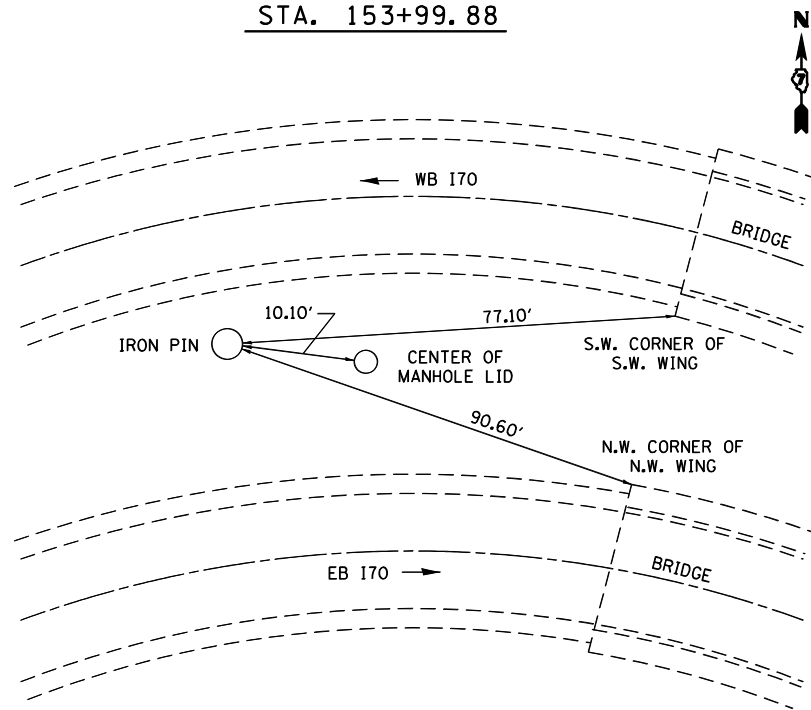
NOTE: NOT DRAWN TO SPECIFIC SCALE

TRAV. #100
STA. 177+02.74



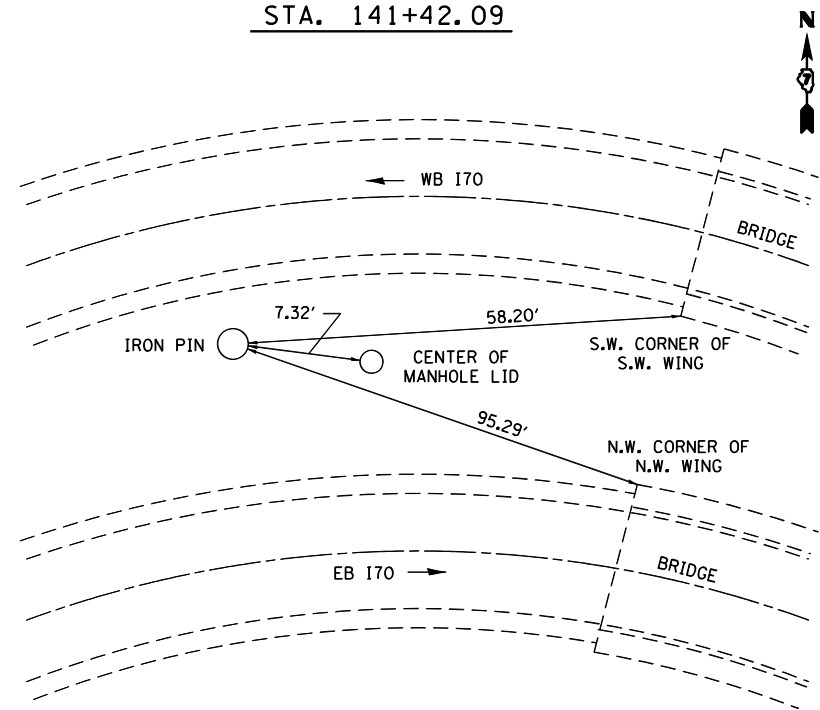
NOTE: NOT DRAWN TO SPECIFIC SCALE

TRAV. #101
STA. 153+99.88



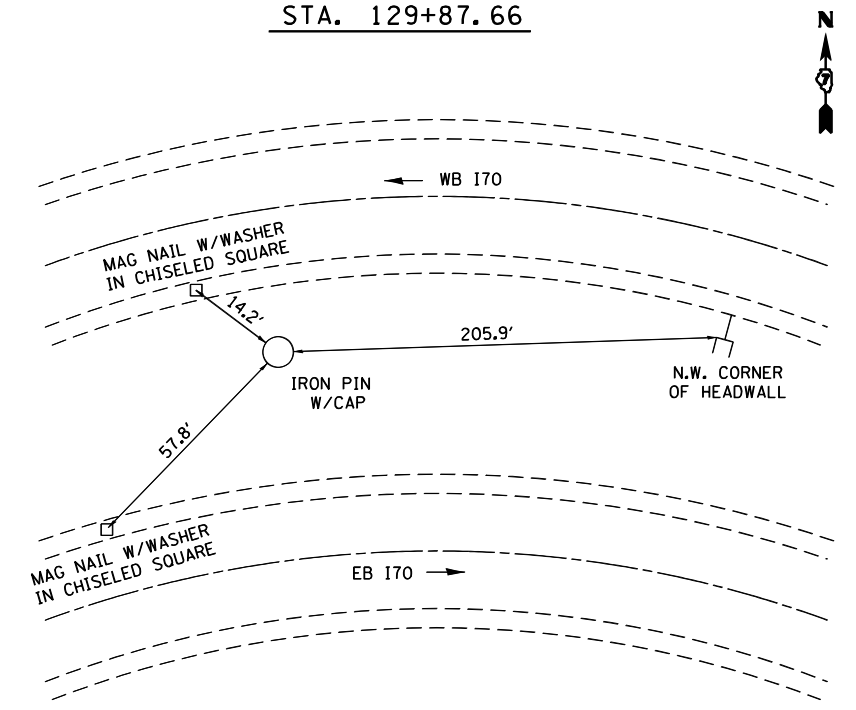
NOTE: NOT DRAWN TO SPECIFIC SCALE

TRAV. #102
STA. 141+42.09



NOTE: NOT DRAWN TO SPECIFIC SCALE

TRAV. #103
STA. 129+87.66



NOTE: NOT DRAWN TO SPECIFIC SCALE

FILE NAME =	USER NAME = steffenmk	DESIGNED -	REVISED -
ct:\pw\work\p\dot\stef\enmk\d0186453\074466-sh-ttiepoints.dgn		DRAWN -	REVISED -
	PLOT SCALE = 100.0000' / 1in.	CHECKED -	REVISED -
	PLOT DATE = 8/20/2012	DATE -	REVISED -

STATE OF ILLINOIS
DEPARTMENT OF TRANSPORTATION

TIE POINTS

SCALE: NA SHEET NO. 2 OF 3 SHEETS STA. TO STA.

• (18-47-VB)K,(18-47B),(18-47-HB)BR			
F.A.I. RTE.	SECTION	COUNTY	TOTAL SHEETS
70	•	CUMBERLAND	147
			SHEET NO. 19
CONTRACT NO. 74466			
ILLINOIS FED. AID PROJECT			