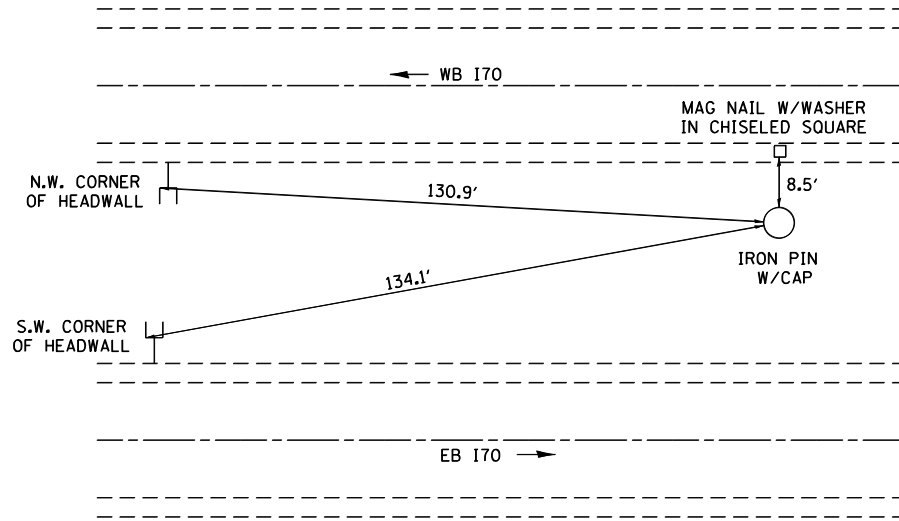
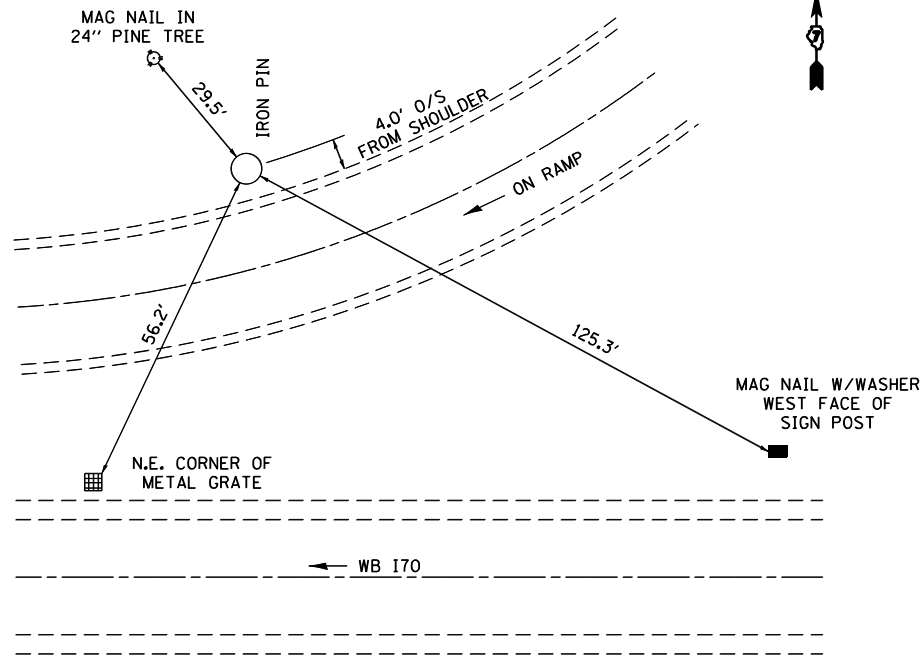


TRAV. #104  
STA. 86+29.14



NOTE: NOT DRAWN TO SPECIFIC SCALE

TRAV. #105  
STA. 195+44.51



NOTE: NOT DRAWN TO SPECIFIC SCALE

BENCHMARKS

BENCHMARK	ELEVATION	DESCRIPTION
20	542.445	CHSL SQUARE SE WING ON WB BR OVER EMBARRASS
21	548.303	CHSL SQUARE SW WING ON WB BR OVER EMBARRASS
22	556.860	CHIS SQUARE SE WING ON WB BR OVER 121
23	557.532	CHIS SQUARE SW WING ON WB BR OVER 121
24	563.500	CHIS SQUARE SE WING ON WB BR OVER ABANDONED RR
25	563.349	CHIS SQUARE SW WING ON WB BR OVER ABANDONED RR

• (18-47-VB)K,(18-47B,18-47-HB)BR

FILE NAME =	USER NAME = steffenmk	DESIGNED -	REVISED -
ci:\pw\work\p\dot\steffenmk\d0186453\07	74466-sh-tiepoints.dgn	DRAWN -	REVISED -
	PLOT SCALE = 100.0000' / in.	CHECKED -	REVISED -
	PLOT DATE = 8/20/2012	DATE -	REVISED -

STATE OF ILLINOIS  
DEPARTMENT OF TRANSPORTATION

TIE POINTS

SCALE: NA SHEET NO. 3 OF 3 SHEETS STA. TO STA.

F.A.I. RTE.	SECTION	COUNTY	TOTAL SHEETS	SHEET NO.
70	•	CUMBERLAND	147	20
			CONTRACT NO. 74466	
ILLINOIS FED. AID PROJECT				