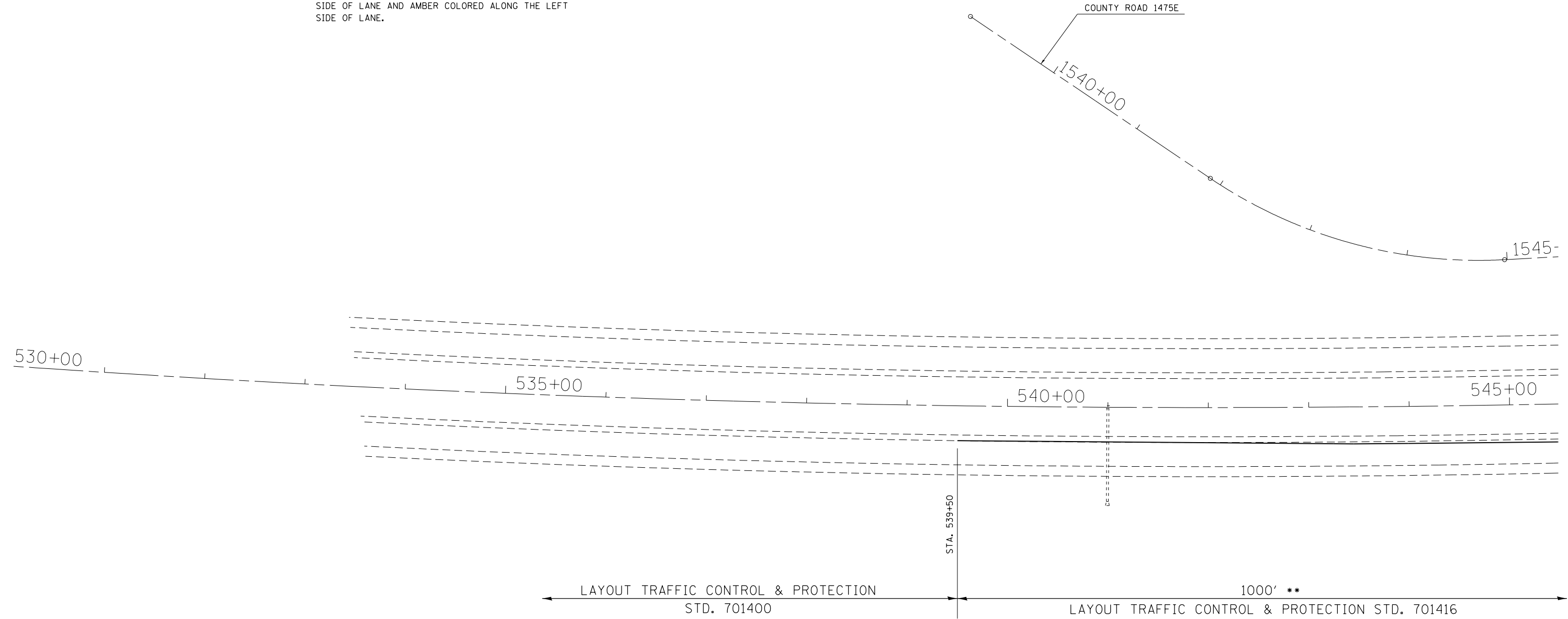







•• NOTE:
 SOLAR POWER RAISED REFLECTIVE PAVEMENT MARKER
 SHALL BE INSTALLED ON ALL TAPERS SPACED ON
 25 FOOT CENTERS. WHITE COLORED ALONG THE RIGHT
 SIDE OF LANE AND AMBER COLORED ALONG THE LEFT
 SIDE OF LANE.



LEGEND

-  WORK AREA
-  TEMPORARY CONCRETE BARRIER
-  PAVEMENT MARKING
-  TYPE II BARRICADE W/STEADY BURN
MONODIRECTIONAL LIGHT
-  DRUM W/STEADY BURN
MONODIRECTIONAL LIGHT

FILE NAME =	USER NAME = steffenmk	DESIGNED -	REVISED -
ci:\pw\work\p\idot\steffenmk\d0186453\d74466-sh1-staging.dgn		DRAWN -	REVISED -
	PLOT SCALE = 100.0000' / 1in.	CHECKED -	REVISED -
	PLOT DATE = 8/20/2012	DATE -	REVISED -

**STATE OF ILLINOIS
 DEPARTMENT OF TRANSPORTATION**

STAGE 2

SCALE: 50 SHEET NO. 1 OF 12 SHEETS STA. 534+00 TO STA. 545+00

(18-47-VB)K,(18-47B,18-47HB)BR		TOTAL SHEETS	SHEET NO.
F.A.I. RTE.	SECTION	COUNTY	TOTAL SHEETS
70	*	CUMBERLAND	147
		CONTRACT NO.	74466
ILLINOIS FED. AID PROJECT			