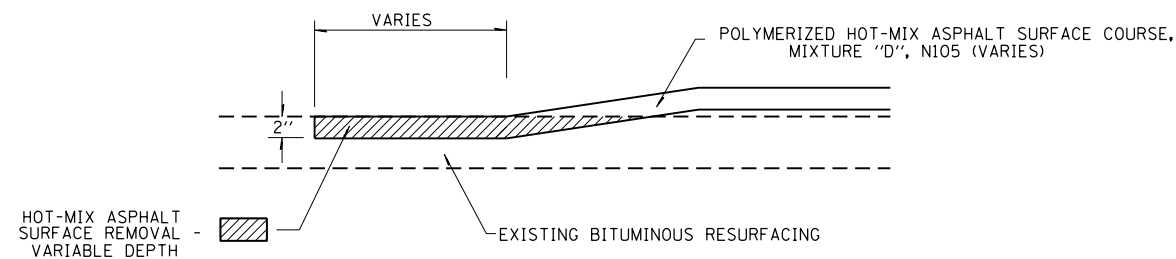


**GENERAL NOTES:**

1. SLOPE STEPS WILL BE REQUIRED FOR ALL 12" THICKNESS "SLIVER FILLS" AND ON ALL FILLS WITH A HEIGHT OF 10' OR GREATER.
2. THE STEP WIDTH SHALL BE TWICE THE STEP DEPTH BUT NOT LESS THEN 6'.
3. REFER TO ARTICLE 205.03 FOR EMBANKMENT TO BE CONSTRUCTED ON HILLSIDE OR SLOPES, OR IF EXISTING EMBANKMENTS ARE TO BE WIDENED.
4. THIS WORK WILL NOT BE PAID FOR SEPARATELY BUT SHALL BE CONSIDERED AS INCLUDED IN THE VARIOUS ITEMS OF EXCAVATION, AND THEIR CONSTRUCTION SHALL BE INCLUDED IN THE UNIT PRICES FOR THESE ITEMS.

NOT TO SCALE

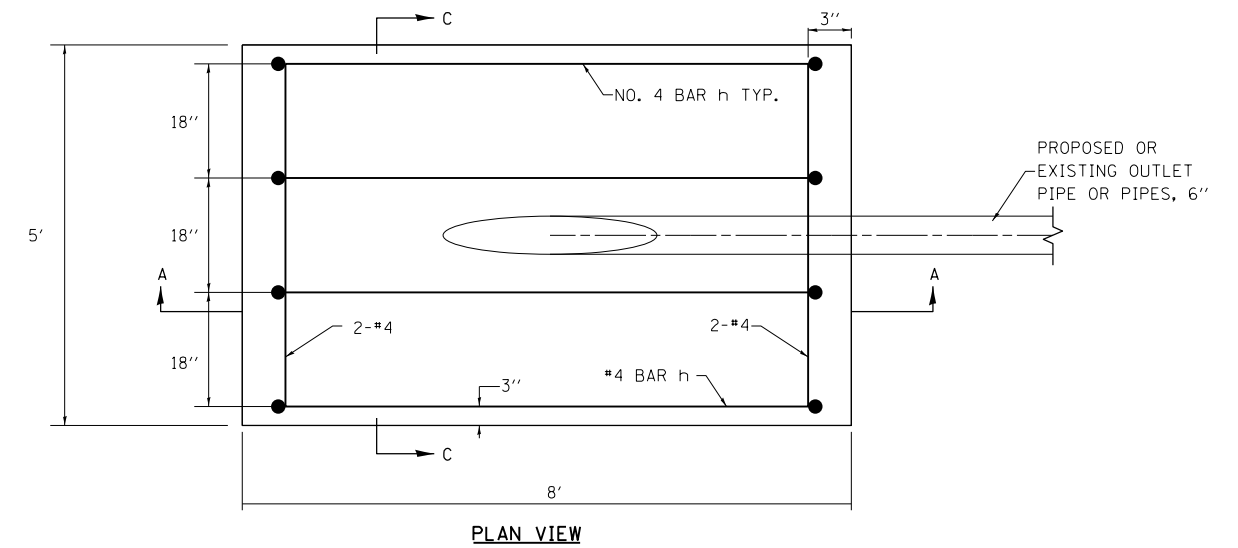


**MILLING AND PAVING DETAIL**

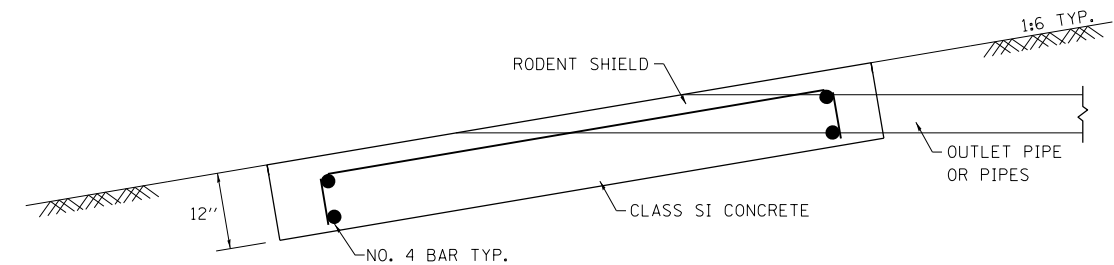
STA. 118+00 (WB)	AT RR BRIDGES	STA. 119+00 (EB)
•STA. 123+00 (WB)		•STA. 124+00 (EB)
STA. 139+25 (WB)	AT IL 121 BRIDGES	STA. 138+50 (EB)
•STA. 146+75 (WB)		•STA. 147+50 (EB)
STA. 152+75 (WB)	AT EMBARRASS RIVER BRIDGES	STA. 153+75 (EB)
•STA. 166+00 (WB)		•STA. 166+00 (EB)

NOT TO SCALE

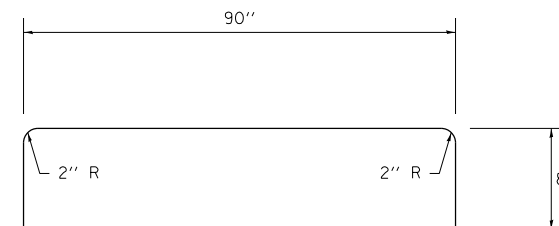
**OUTLET PROTECTION DETAIL**



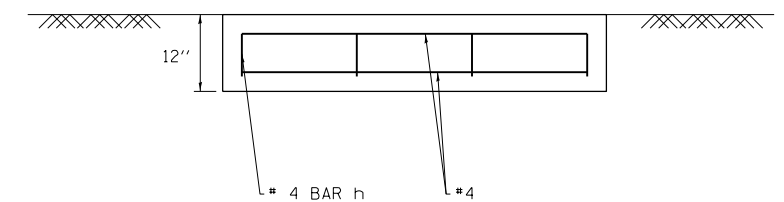
**PLAN VIEW**



**SECTION A-A**



**#4 h BAR**



**SECTION C-C**

**NOTES**

- See Standard 601101 for details of rodent shields.
- The outlet pipe or pipes shall be located as close as possible to the center of the outlet protector.
- The last 10' of outlet pipe shall be schedule 40 PVC.
- The rebars may be cut or relocated to accommodate pipe.
- Cut outlet pipe on a bevel to match finished surface of surrounding PCC.

NOT TO SCALE

FILE NAME =	USER NAME = steffenmk	DESIGNED -	REVISED -
ci:\pw\work\p\dot\stefenmk\d0186453\d74466-sh1-details.dgn		DRAWN -	REVISED -
		CHECKED -	REVISED -
		DATE -	REVISED -

**STATE OF ILLINOIS  
DEPARTMENT OF TRANSPORTATION**

**BENCHING DETAIL, OUTLET PROTECTOR DETAIL AND  
MILLING AND PAVING DETAIL**

SCALE: NA SHEET NO. 1 OF 1 SHEETS STA. TO STA.

*(18-47-VB)K,(18-47B,18-47HB)BR			
F.A.I. RTE.	SECTION	COUNTY	TOTAL SHEETS
70	.	CUMBERLAND	147
			SHEET NO. 56
CONTRACT NO. 74466			
ILLINOIS FED. AID PROJECT			