

NORTH CURB LINE

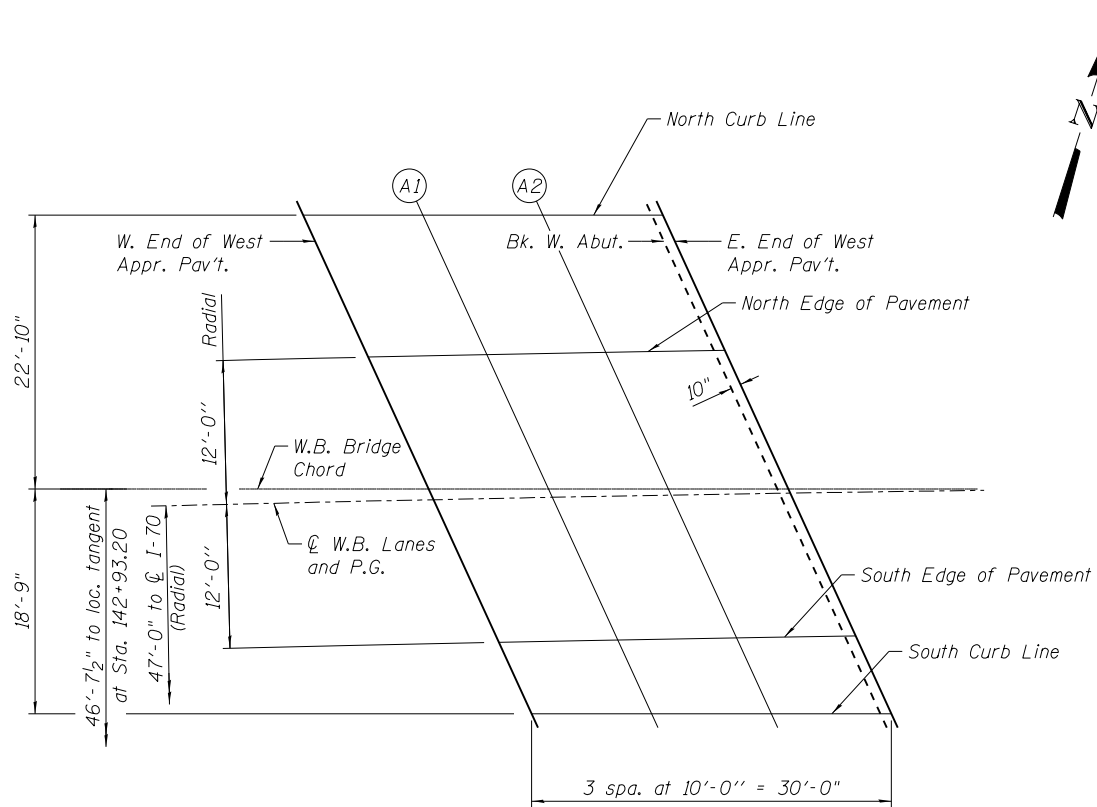
Location	Station	Offset	Theoretical Grade Elevations
W. End of West Appr. Pav't.	141+62.64	70.96 Lt.	555.63
A1	141+72.52	70.74 Lt.	555.58
A2	141+82.39	70.54 Lt.	555.53
E. End of West Appr. Pav't.	141+92.27	70.36 Lt.	555.48

NORTH EDGE OF PAVEMENT

Location	Station	Offset	Theoretical Grade Elevations
W. End of West Appr. Pav't.	141+67.75	59.00 Lt.	555.27
A1	141+77.55	59.00 Lt.	555.23
A2	141+87.37	59.00 Lt.	555.19
E. End of West Appr. Pav't.	141+97.19	59.00 Lt.	555.14

☉ W.B. LANES AND P.G.

Location	Station	Offset	Theoretical Grade Elevations
W. End of West Appr. Pav't.	141+72.89	47.00 Lt.	554.92
A1	141+82.72	47.00 Lt.	554.87
A2	141+92.56	47.00 Lt.	554.83
E. End of West Appr. Pav't.	142+02.40	47.00 Lt.	554.79



PLAN
West Approach (W.B.)

SOUTH EDGE OF PAVEMENT

Location	Station	Offset	Theoretical Grade Elevations
W. End of West Appr. Pav't.	141+78.06	35.00 Lt.	554.56
A1	141+87.91	35.00 Lt.	554.51
A2	141+97.77	35.00 Lt.	554.47
E. End of West Appr. Pav't.	142+07.64	35.00 Lt.	554.43

SOUTH CURB LINE

Location	Station	Offset	Theoretical Grade Elevations
W. End of West Appr. Pav't.	141+80.65	28.99 Lt.	554.38
A1	141+90.60	28.80 Lt.	554.33
A2	142+00.55	28.63 Lt.	554.28
E. End of West Appr. Pav't.	142+10.50	28.47 Lt.	554.23

N:\PROJECTS\0003377\00\0003377\07\Design\Structure\CAD\018-0047 & 018-0048-74466_07 Top of West Approach Slab (WB).dgn



USER NAME = bsauter	DESIGNED - AMK	REVISED -
	CHECKED - MHT	REVISED -
PLOT SCALE = 16x0.0000 '1' / in.	DRAWN - RD	REVISED -
PLOT DATE = 8/14/2012	CHECKED - MHT	REVISED -

**STATE OF ILLINOIS
DEPARTMENT OF TRANSPORTATION**

**W.B. TOP OF WEST APPROACH SLAB ELEVATIONS
SN 018-0047 (W.B.) & 018-0048 (E.B.)**

SHEET NO. S-7 OF S-34 SHEETS

F.A.I. RTE.	SECTION	COUNTY	TOTAL SHEETS	SHEET NO.
70	(18-47B, 18-47HB)BR	CUMBERLAND	147	65
CONTRACT NO. 74466				
ILLINOIS FED. AID PROJECT				