

NORTH CURB LINE

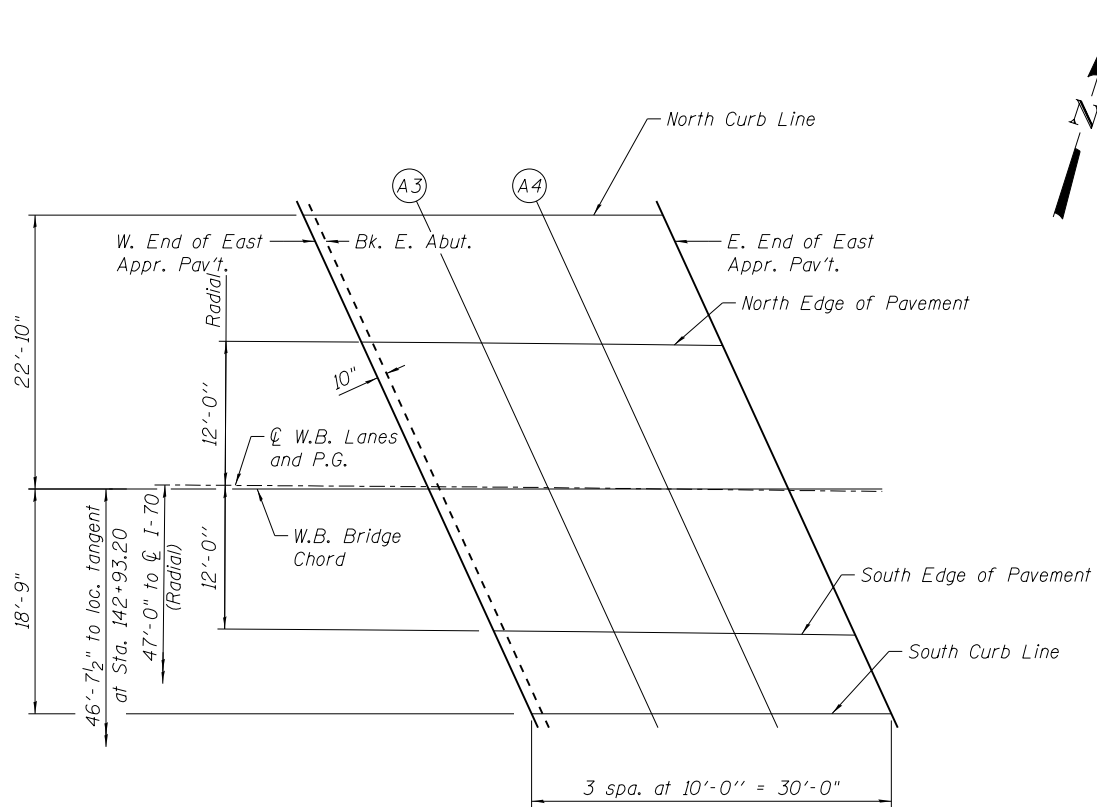
Location	Station	Offset	Theoretical Grade Elevations
W. End of East Appr. Pav't.	143+27.21	69.56 Lt.	554.83
A3	143+37.09	69.63 Lt.	554.78
A4	143+46.97	69.71 Lt.	554.73
E. End of East Appr. Pav't.	143+56.85	69.82 Lt.	554.69

NORTH EDGE OF PAVEMENT

Location	Station	Offset	Theoretical Grade Elevations
W. End of East Appr. Pav't.	143+32.07	59.00 Lt.	554.51
A3	143+42.01	59.00 Lt.	554.46
A4	143+51.95	59.00 Lt.	554.41
E. End of East Appr. Pav't.	143+61.90	59.00 Lt.	554.36

☉ W.B. LANES AND P.G.

Location	Station	Offset	Theoretical Grade Elevations
W. End of East Appr. Pav't.	143+37.63	47.00 Lt.	554.14
A3	143+47.59	47.00 Lt.	554.09
A4	143+57.55	47.00 Lt.	554.04
E. End of East Appr. Pav't.	143+67.53	47.00 Lt.	553.99



PLAN
East Approach (W.B.)

SOUTH EDGE OF PAVEMENT

Location	Station	Offset	Theoretical Grade Elevations
W. End of East Appr. Pav't.	143+43.21	35.00 Lt.	553.78
A3	143+53.19	35.00 Lt.	553.73
A4	143+63.18	35.00 Lt.	553.68
E. End of East Appr. Pav't.	143+73.18	35.00 Lt.	553.63

SOUTH CURB LINE

Location	Station	Offset	Theoretical Grade Elevations
W. End of East Appr. Pav't.	143+46.42	28.12 Lt.	553.57
A3	143+56.37	28.22 Lt.	553.52
A4	143+66.32	28.34 Lt.	553.48
E. End of East Appr. Pav't.	143+76.27	28.48 Lt.	553.43

N:\PROJECTS\0003377.00\0003377.07\Design\Structure\CAD\018-0047 & 018-0048-74466_08 Top of East Approach Slab (W.B).dgn



USER NAME = bsauter	DESIGNED - AMK	REVISED -
	CHECKED - MHT	REVISED -
PLOT SCALE = 16x0.0000 '1' / in.	DRAWN - RD	REVISED -
PLOT DATE = 8/14/2012	CHECKED - MHT	REVISED -

**STATE OF ILLINOIS
DEPARTMENT OF TRANSPORTATION**

**W.B. TOP OF EAST APPROACH SLAB ELEVATIONS
SN 018-0047 (W.B.) & 018-0048 (E.B.)**

SHEET NO. S-8 OF S-34 SHEETS

F.A.I. RTE.	SECTION	COUNTY	TOTAL SHEETS	SHEET NO.
70	(18-47B, 18-47HB)BR	CUMBERLAND	147	66
CONTRACT NO. 74466				
ILLINOIS FED. AID PROJECT				