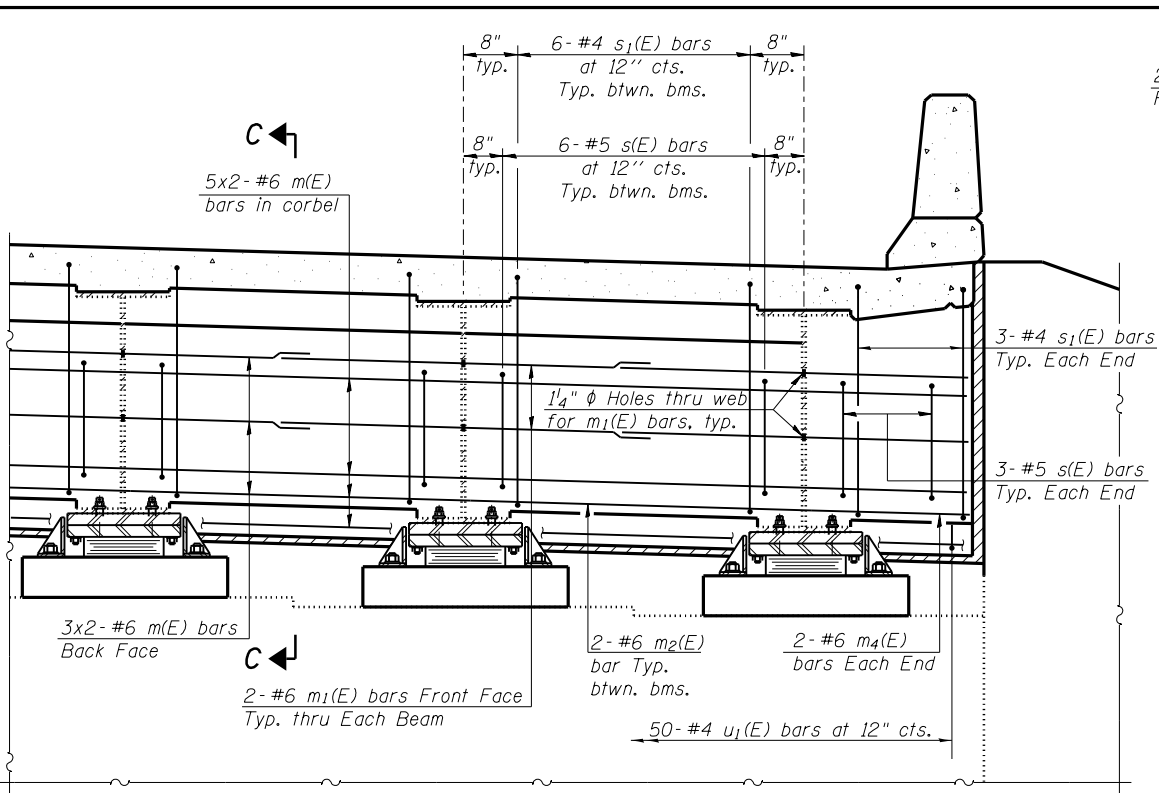
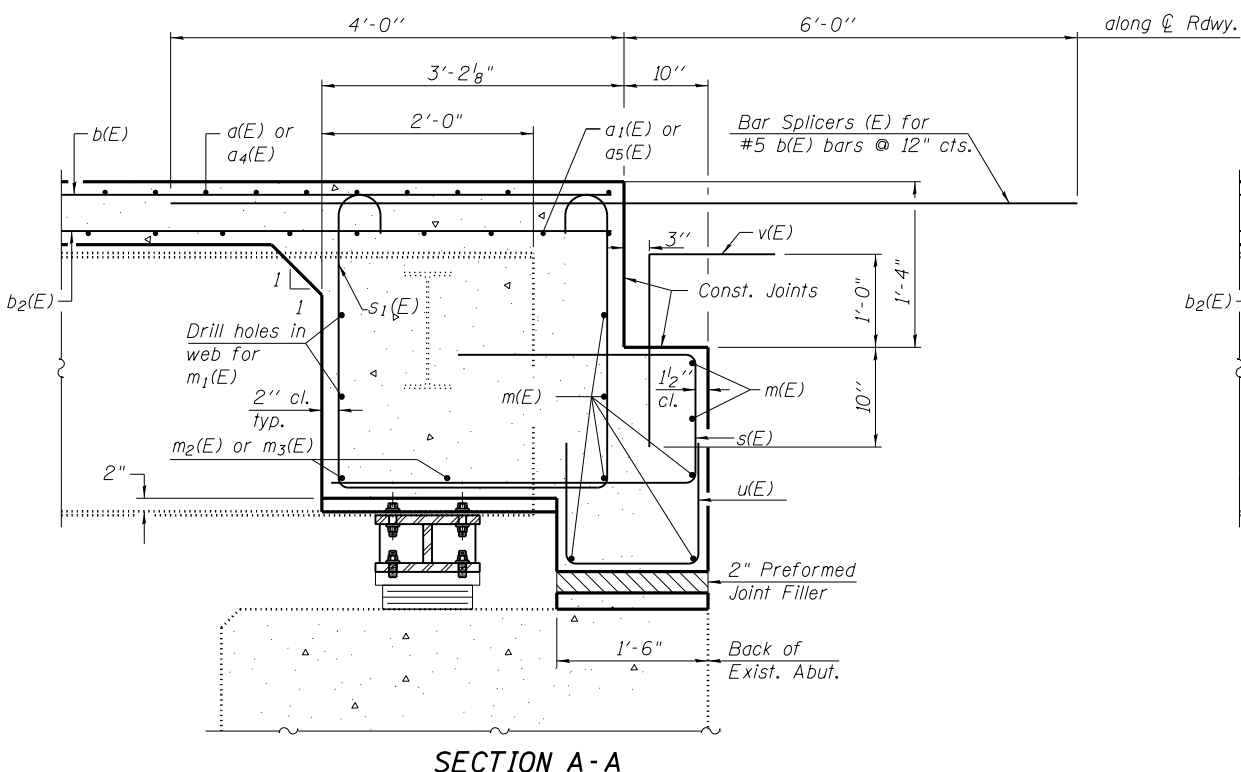
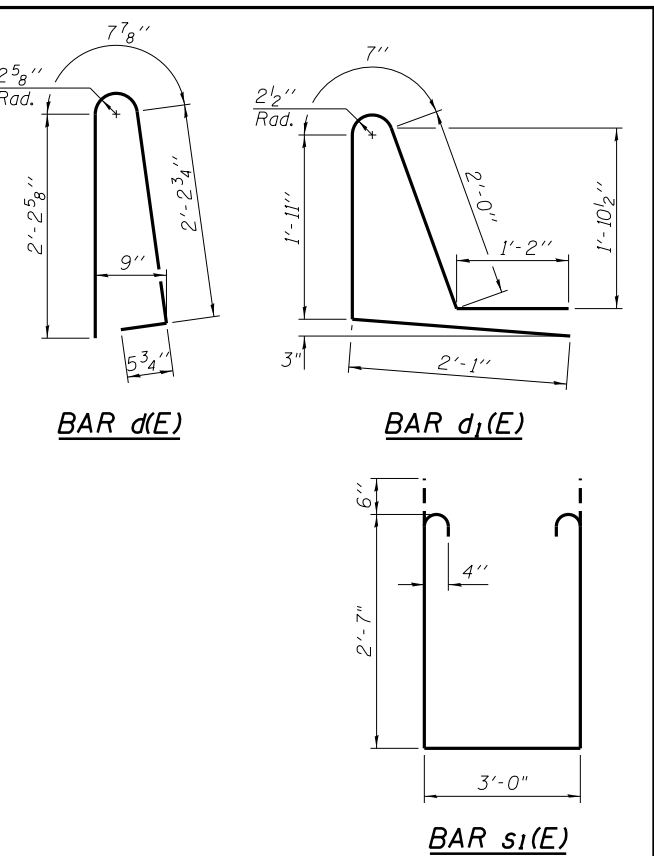


DIAPHRAGM ELEVATION AT W.B. ABUTMENTS

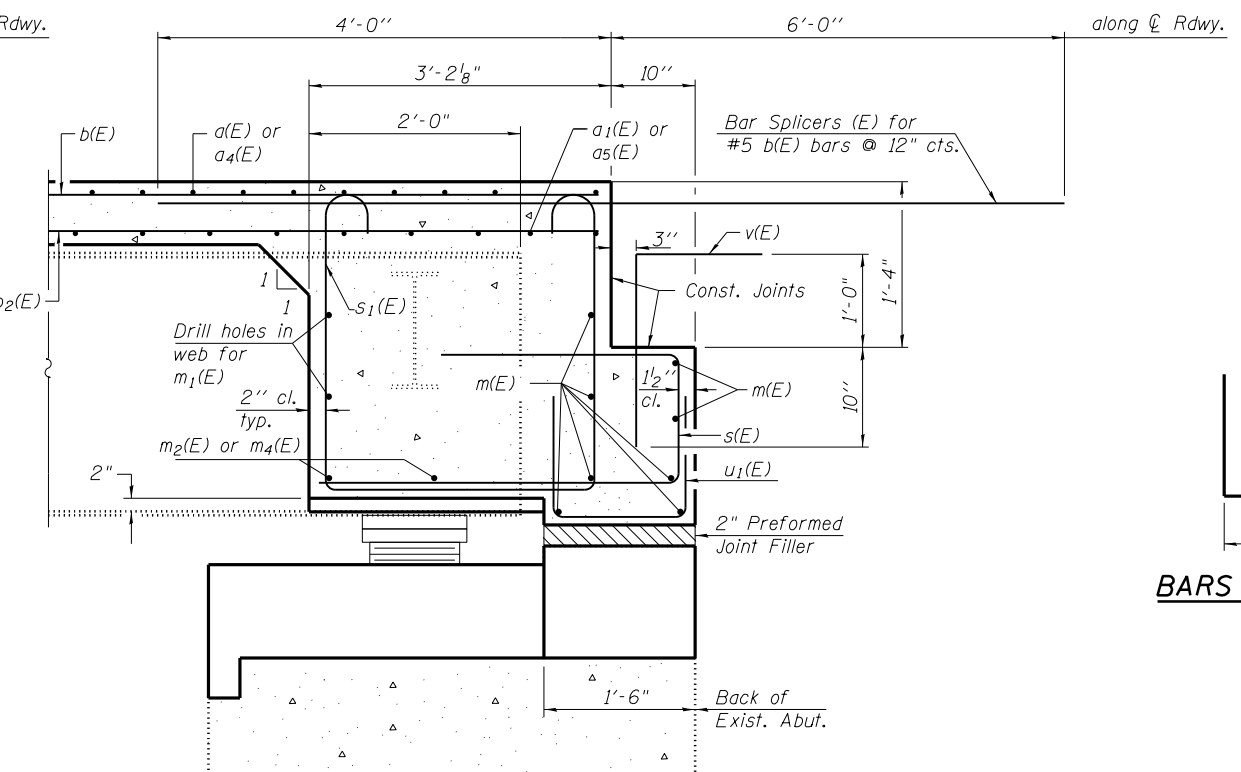


DIAPHRAGM ELEVATION AT E.B. ABUTMENTS



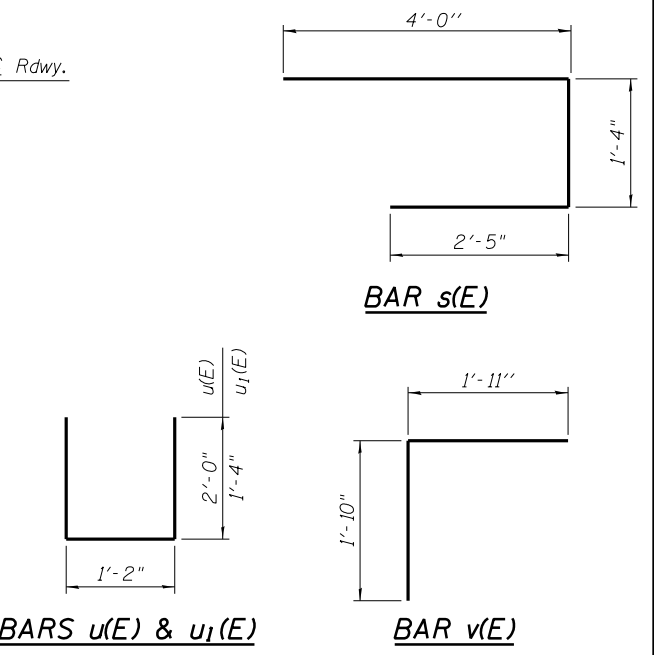
SECTION A-A

Dimensions at right angles to abutment, except as shown.



SECTION C-C

Dimensions at right angles to abutment, except as shown.



MIN. BAR LAP
#6 bar = 3'-4"

NOTES:

1. Reinforcement bars in diaphragm are billed with superstructure on sheet S-13.
2. Concrete in diaphragm is included with Concrete Superstructure on sheet S-13.
3. The s(E) and s1(E) bars shall be placed parallel to the beams. Spacing for these bars shall be at right angles to the beams.

N:\PROJECTS\0003377\00\0003377\07\Design\Structure\CAD\018-0047 & 018-0048-74466 14 Diaphragm Detail.dgn



USER NAME = bsauter	DESIGNED - BWS	REVISED -
PLOT SCALE = 16.000022 ' / in.	CHECKED - MHT	REVISED -
PLOT DATE = 8/14/2012	DRAWN - RD	REVISED -
	CHECKED - MHT	REVISED -

STATE OF ILLINOIS
DEPARTMENT OF TRANSPORTATION

DIAPHRAGM DETAILS
SN 018-0047 (W.B.) & 018-0048 (E.B.)
SHEET NO. S-14 OF S-34 SHEETS

F.A.I. RTE.	SECTION	COUNTY	TOTAL SHEETS	SHEET NO.
70	(18-47B, 18-47HB)BR	CUMBERLAND	147	72
CONTRACT NO. 74466				
ILLINOIS FED. AID PROJECT				