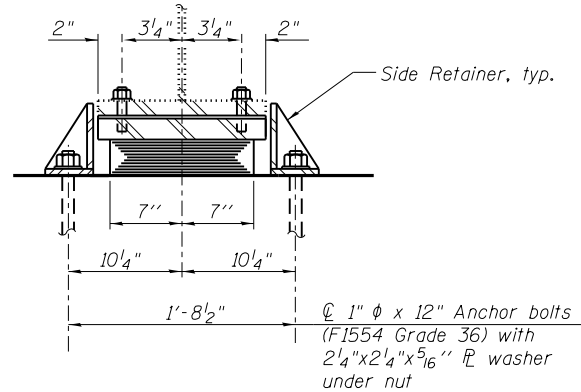
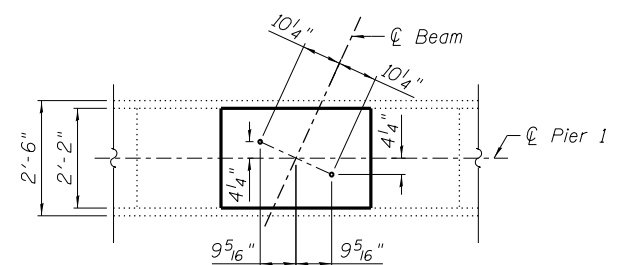


ELEVATION AT PIER 1

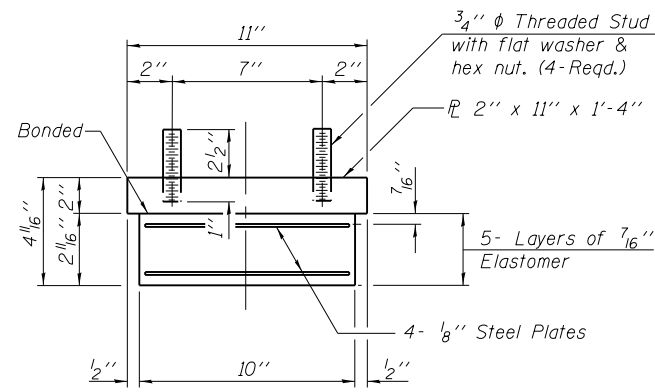


SECTION A-A



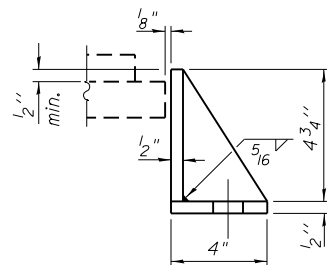
BEARING ANCHOR BOLT LAYOUT
(E.B. Bearings)

TYPE I ELASTOMERIC EXP. BRG.
(E.B. Bearings)



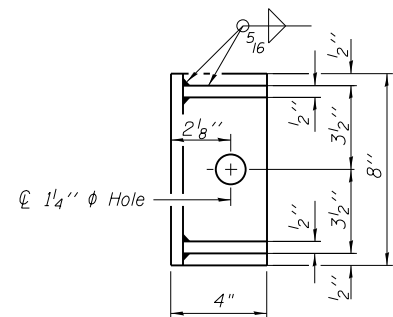
BEARING ASSEMBLY
(E.B. Bearings 7 Thus)

Note:
Shim plates shall not be placed under Bearing Assembly.



SIDE RETAINER

Equivalent rolled angle with stiffeners will be allowed in lieu of welded plates.



Notes:
Anchor bolts shall be ASTM F1554 all-thread (or an Engineer-approved alternate material) of the grade(s) and diameter(s) specified. The corresponding specified grade of AASHTO M314 anchor bolts may be used in lieu of ASTM F1554.
Anchor bolts for side retainers may be cast in place or installed in holes drilled before or after members are in place.
Drilled and set anchor bolts shall be installed according to Article 521.06 of the Standard Specifications.
Side retainers and other steel members required for the elastomeric bearing assembly shall be included in the cost of Elastomeric Bearing Assembly, Type I.
Two 1/8" adjusting shims shall be provided for each bearing in addition to all other plates or shims and placed as shown on bearing details.
Prior to ordering any material the Contractor shall verify in the field all bearing height and shim thickness dimensions.

BILL OF MATERIAL

Item	Unit	Total
Elastomeric Bearing Assembly Type I	Each	7
Anchor Bolts, 1"	Each	14

N:\PROJ\0003377\00\0003377\07\Design\Structural\CAD\018-0047 & 018-0048-74466 21 Bearing Details 2.dgn



USER NAME = RDenley	DESIGNED - BWS	REVISED -
	CHECKED - MHT	REVISED -
PLOT SCALE = 0:2.0000 '1" / 1"	DRAWN - RD	REVISED -
PLOT DATE = 8/14/2012	CHECKED - MHT	REVISED -

STATE OF ILLINOIS
DEPARTMENT OF TRANSPORTATION

PIER 1 BEARING DETAILS
SN 018-0047 (W.B.) & 018-0048 (E.B.)

SHEET NO. S-21 OF S-34 SHEETS

F.A.I. RTE.	SECTION	COUNTY	TOTAL SHEETS	SHEET NO.
70	(18-47B, 18-47HB)BR	CUMBERLAND	147	79
CONTRACT NO. 74466				
ILLINOIS FED. AID PROJECT				