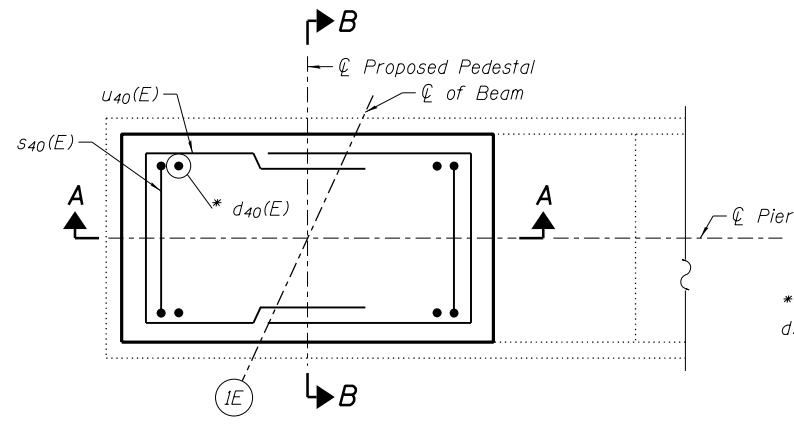
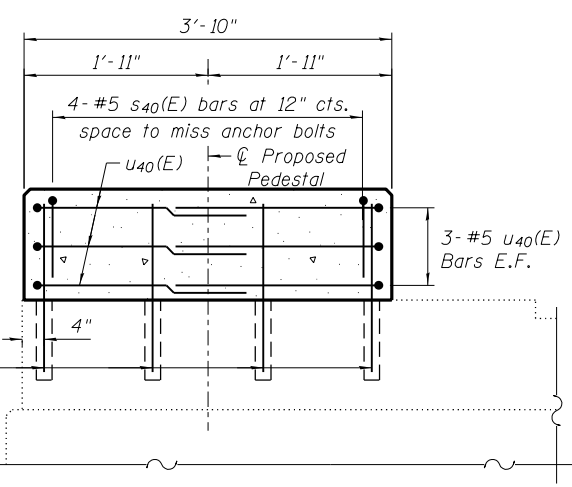


PIER 1 ELEVATION
(Looking West)

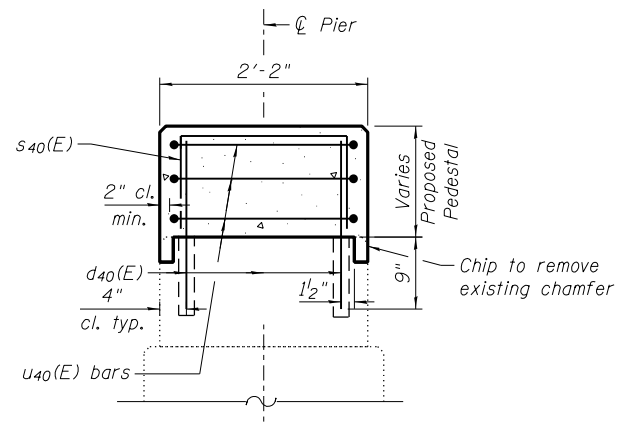
PIER 2 ELEVATION
(Looking West)



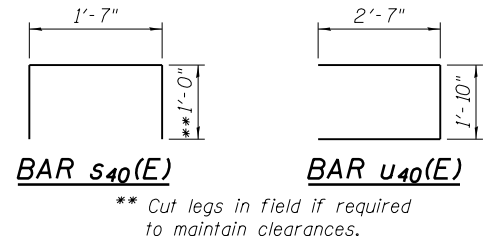
DETAIL A
* Epoxy grout d40(E) bars in 9" min. drilled holes according to Section 584 of the Standard Specifications.



SECTION A-A



SECTION B-B



NOTES:

1. Prior to ordering any material the contractor shall verify in the field all bearing height and shim thickness dimensions.
2. For anchor bolt layout see sheet S-21 & 22.

LEGEND

- Structural Repair of Concrete (Depth equal to or less than 5")
- HL - Hairline Crack - No Repairs

BILL OF MATERIAL

Bar	No.	Size	Length	Shape
d40(E)	56	#5	1'-8"	—
s40(E)	28	#5	3'-7"	┌
u40(E)	42	#5	7'-0"	┌
Concrete Structures		Cu. Yd.	2.5	
Reinforcement Bars, Epoxy Coated		Pound	510	
Structural Repair of Concrete (Depth equal to or less than 5")		Sq. Ft.	2	

N:\PROJECTS\0003377\00\0003377\07\Design\Structural\CAD\018-0047 & 018-0048-74466_30 EB Pier Repair Details.dgn



USER NAME = RDenley	DESIGNED - MHT	REVISED -
PLOT SCALE = 8x11" / 1"	CHECKED - BWS	REVISED -
PLOT DATE = 8/14/2012	DRAWN - RD	REVISED -
	CHECKED - BWS	REVISED -

STATE OF ILLINOIS
DEPARTMENT OF TRANSPORTATION

E.B. PIER REPAIR DETAILS
SN 018-0047 (W.B.) & 018-0048 (E.B.)

SHEET NO. S-30 OF S-34 SHEETS

F.A.I. RTE.	SECTION	COUNTY	TOTAL SHEETS	SHEET NO.
70	(18-47B, 18-47HB)BR	CUMBERLAND	147	88
CONTRACT NO. 74466				
ILLINOIS FED. AID PROJECT				