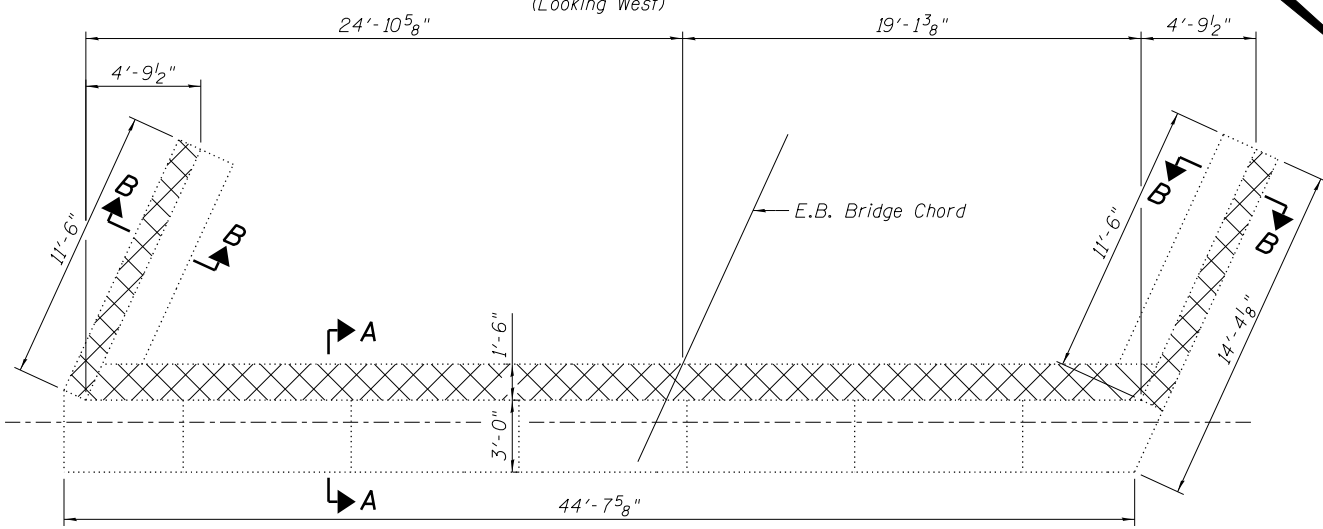
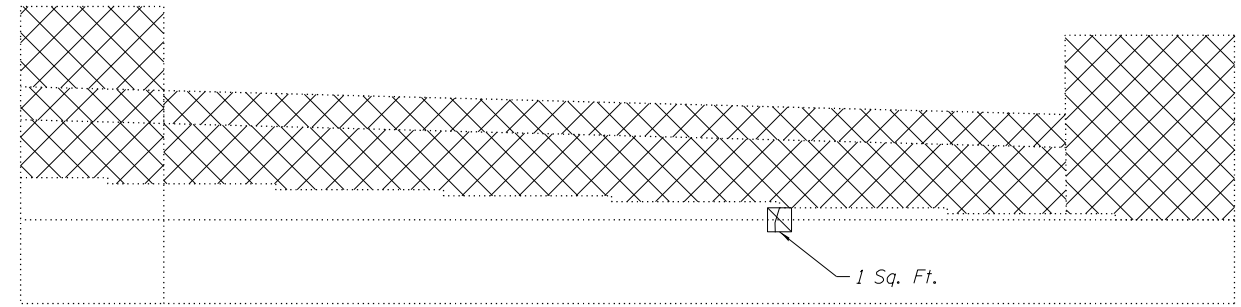


ELEVATION

(Looking West)

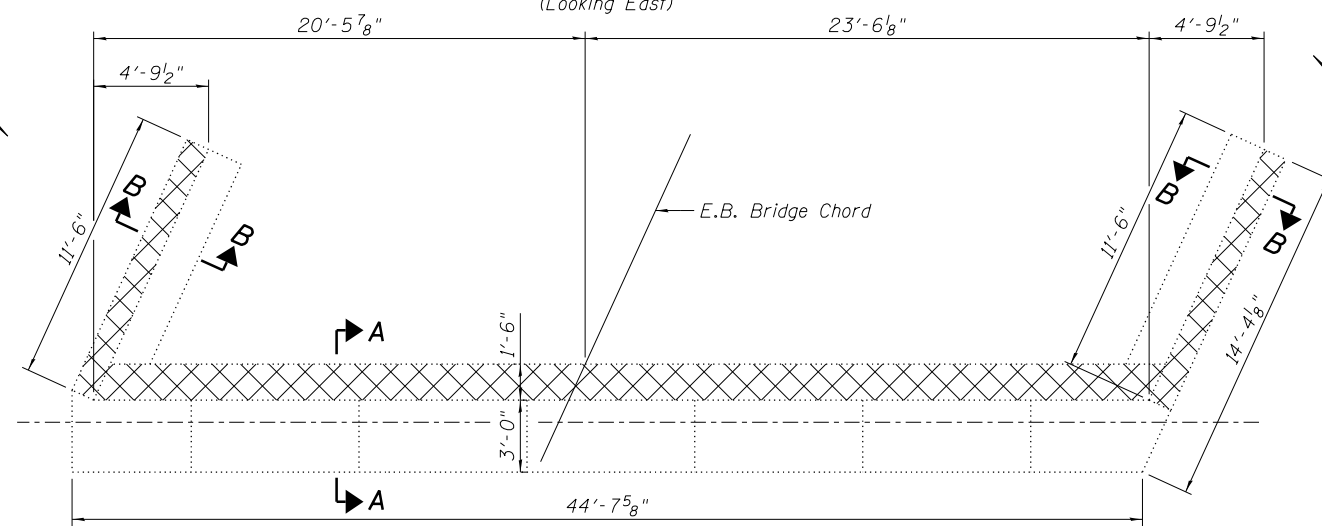


PLAN
WEST ABUTMENT

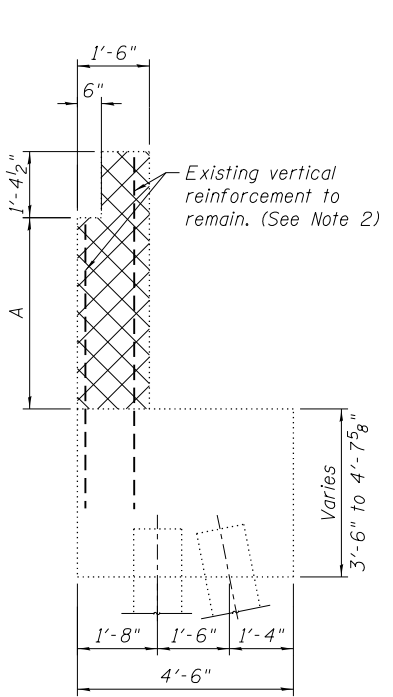


ELEVATION

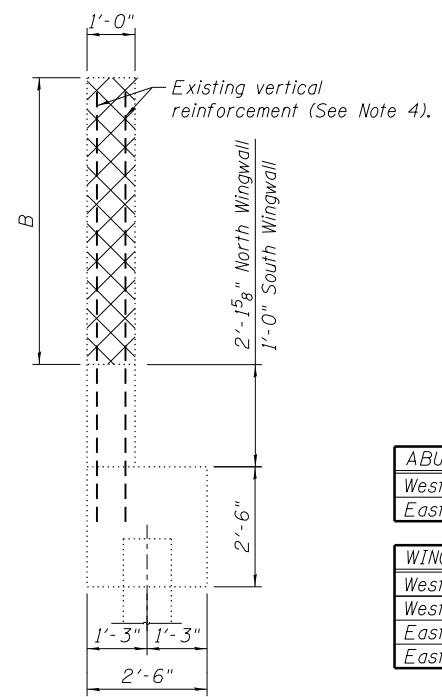
(Looking East)



PLAN
EAST ABUTMENT



SECTION A-A



SECTION B-B

ABUTMENT BACKWALL	A
West Abutment	Varies 2'-9 7/8" to 4'-0 1/8"
East Abutment	Varies 2'-9 1/2" to 3'-11 1/8"

WINGWALL	B
West Abut. North Wingwall	7'-9 1/8"
West Abut. South Wingwall	7'-8 1/4"
East Abut. North Wingwall	7'-8 3/4"
East Abut. South Wingwall	7'-8"

NOTES:

- Repairs of the existing abutments shall include but may not be limited to the areas shown. The actual areas to be repaired will be determined by the Engineer at the time of construction.
- Existing reinforcement shall be cleaned and incorporated into the new construction. Cost included with Concrete Removal.
- Any reinforcement bars that are damaged during concrete removal operations shall be repaired or replaced using an approved bar splicer or anchorage system. Cost included with Concrete Removal.
- Existing reinforcement not extending into new construction shall be cut off and covered with a 2" layer of cement grout. Cost shall be included with Concrete Removal.

LEGEND

- Concrete Removal
- Structural Repair of Concrete (Depth equal to or less than 5")

BILL OF MATERIAL

ITEM	UNIT	TOTAL
Structural Repair of Concrete (Depth equal to or less than 5")	Sq. Ft.	1
Concrete Removal	Cu. Yd.	34.3

N:\PROJECTS\0003377\00\0003377\07\Design\Structural\CAD\018-0047 & 018-0048-74466_32 Removal_Detail.s-2.dgn



USER NAME = RDanley	DESIGNED - MHT	REVISED -
PLOT SCALE = 8x0 1/4" = 1"	CHECKED - BWS	REVISED -
PLOT DATE = 8/14/2012	DRAWN - RD	REVISED -
	CHECKED - MHT	REVISED -

STATE OF ILLINOIS
DEPARTMENT OF TRANSPORTATION

E.B. ABUTMENT REMOVAL AND REPAIRS
SN 018-0047 (W.B.) & 018-0048 (E.B.)

SHEET NO. S-32 OF S-34 SHEETS

F.A.I. RTE.	SECTION	COUNTY	TOTAL SHEETS	SHEET NO.
70	(18-47B, 18-47HB)BR	CUMBERLAND	147	90
CONTRACT NO. 74466				
ILLINOIS FED. AID PROJECT				