

NORTH EDGE OF SHOULDER

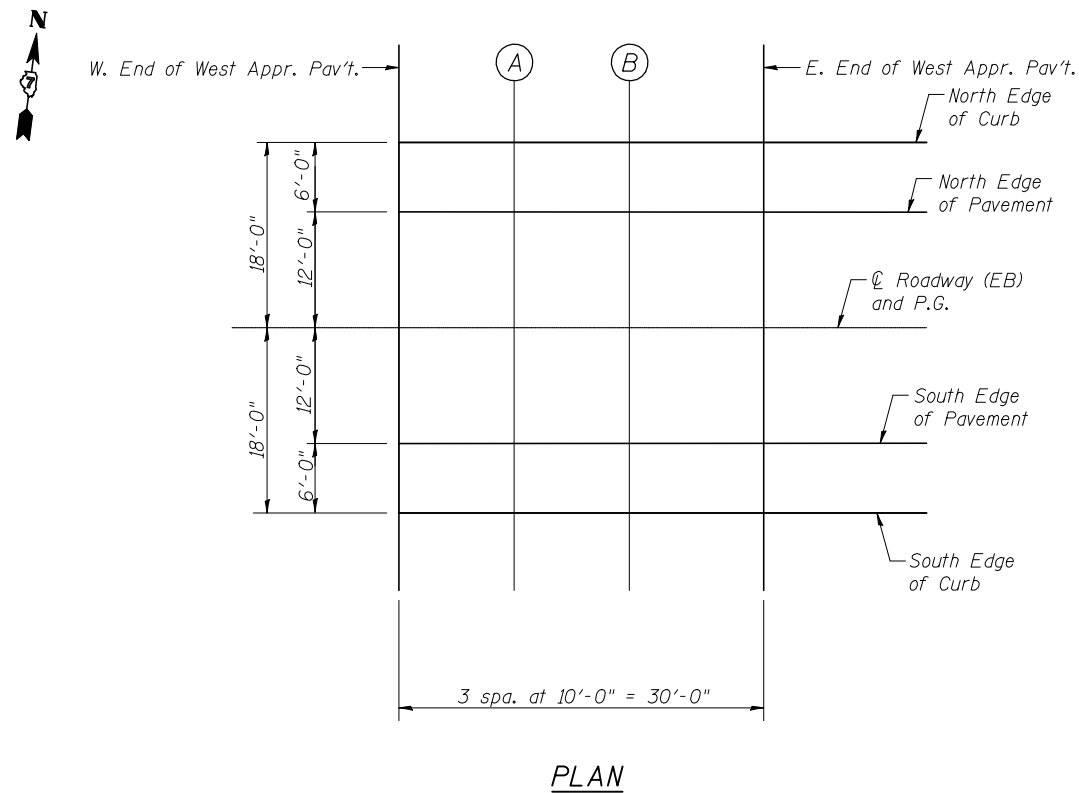
Location	Station	Offset	Theoretical Grade Elevations	Theoretical Grade Elevations Adjusted for Grinding
W. End West Appr. Pav't.	154+57.50	-18.00	545.31	545.31
A	154+67.50	-18.00	545.23	545.23
B	154+77.50	-18.00	545.14	545.14
E. End West Appr. Pav't.	154+87.50	-18.00	545.05	545.05

NORTH EDGE OF PAVEMENT

Location	Station	Offset	Theoretical Grade Elevations	Theoretical Grade Elevations Adjusted for Grinding
W. End West Appr. Pav't.	154+57.50	-12.00	545.43	545.43
A	154+67.50	-12.00	545.35	545.35
B	154+77.50	-12.00	545.26	545.26
E. End West Appr. Pav't.	154+87.50	-12.00	545.17	545.17

☉ ROADWAY, PROFILE GRADE

Location	Station	Offset	Theoretical Grade Elevations	Theoretical Grade Elevations Adjusted for Grinding
W. End West Appr. Pav't.	154+57.50	0.00	545.62	545.62
A	154+67.50	0.00	545.54	545.54
B	154+77.50	0.00	545.45	545.45
E. End West Appr. Pav't.	154+87.50	0.00	545.36	545.36



PLAN

SOUTH EDGE OF PAVEMENT

Location	Station	Offset	Theoretical Grade Elevations	Theoretical Grade Elevations Adjusted for Grinding
W. End West Appr. Pav't.	154+57.50	12.00	545.43	545.43
A	154+67.50	12.00	545.35	545.35
B	154+77.50	12.00	545.26	545.26
E. End West Appr. Pav't.	154+87.50	12.00	545.17	545.17

SOUTH EDGE OF SHOULDER

Location	Station	Offset	Theoretical Grade Elevations	Theoretical Grade Elevations Adjusted for Grinding
W. End West Appr. Pav't.	154+57.50	18.00	545.31	545.31
A	154+67.50	18.00	545.23	545.23
B	154+77.50	18.00	545.14	545.14
E. End West Appr. Pav't.	154+87.50	18.00	545.05	545.05

E-AS 7-1-10
 BLANK, WESSELINK, COOK & ASSOCIATES DECATUR, ILLINOIS ENGINEERS - CONSULTANTS DESIGN FIRM NO. 184000894

FILE NAME =	USER NAME =	DESIGNED <i>PBB</i>	REVISD -	STATE OF ILLINOIS DEPARTMENT OF TRANSPORTATION	TOP OF APPROACH SLAB ELEVATIONS STRUCTURE NO. 018-0050(E.B.)	F.A.I. RTE.	SECTION	COUNTY	TOTAL SHEETS	SHEET NO.	
	CHECKED <i>MCB</i>	REVISD -	70			(18-47-VBK (18-47B, 18-47HB)/BR	CUMBERLAND	147	102		
	PLOT SCALE =	DRAWN <i>MLO</i>	REVISD -			CONTRACT NO. 74466					
	PLOT DATE =	CHECKED <i>MCB</i>	REVISD -			ILLINOIS FED. AID PROJECT					