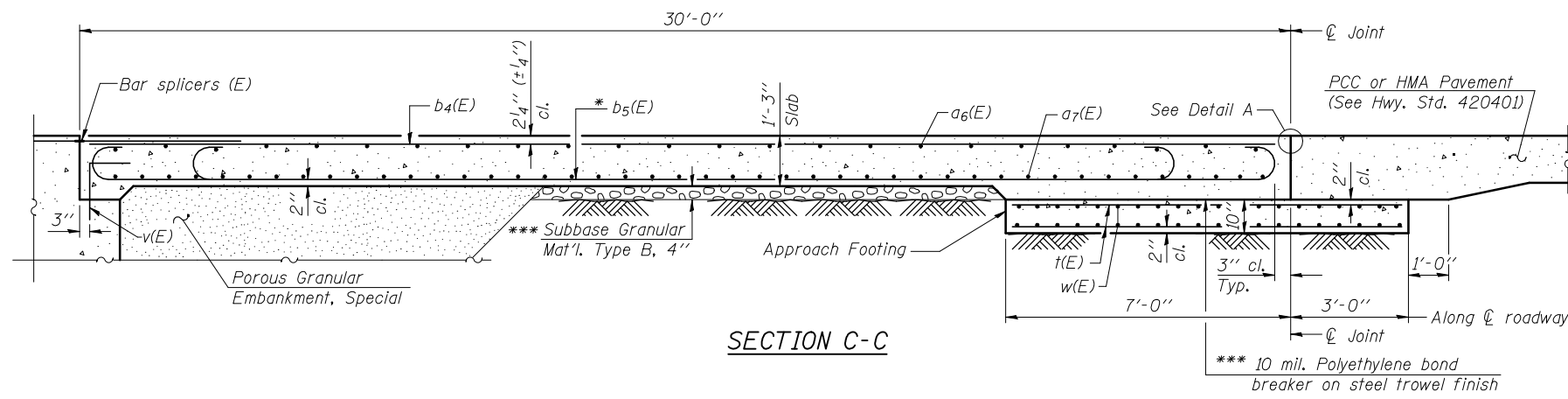
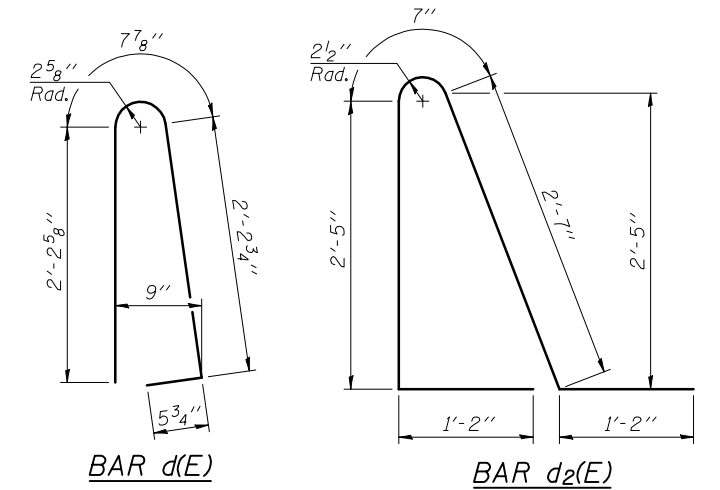


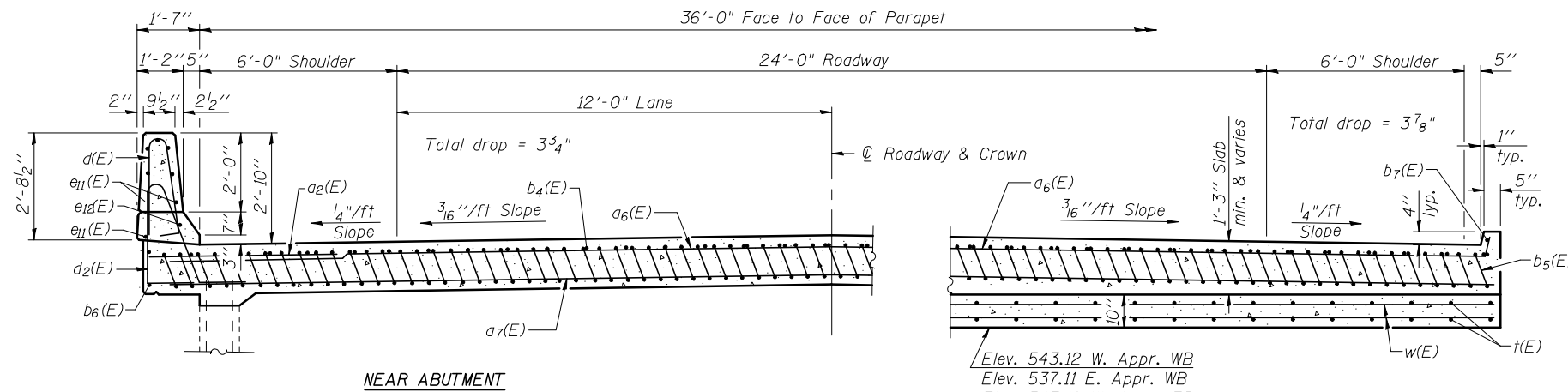
Notes:
 See sheet 15 of 42 for Detail A and View B-B.
 Approach slab and parapet concrete shall be paid for as Concrete Superstructure.
 Approach footing concrete shall be paid for as Concrete Structures.
 Reinforcement shall be paid for as Reinforcement Bars, Epoxy Coated.
 For v(E) bar details, see sheet 24 of 42.
 The approach footing maximum applied service bearing pressure (Q_{max}) = 2.0 ksf.
 Cost of excavation for approach footing included with Concrete Structures.
 For Porous Granular Embankment, Special and drainage treatment details, see sheet 2 of 42.
 For additional parapet details, see sheet 15 of 42.



SECTION C-C



* Tilt #9 b₅(E) bars as required to maintain clearance.
 *** Cost included with Concrete Superstructure.

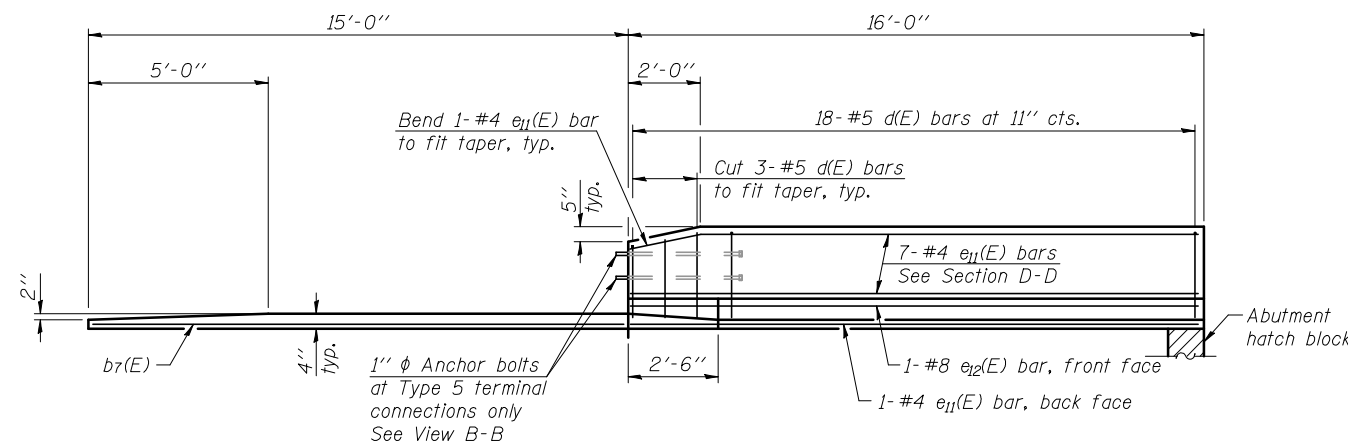


NEAR ABUTMENT

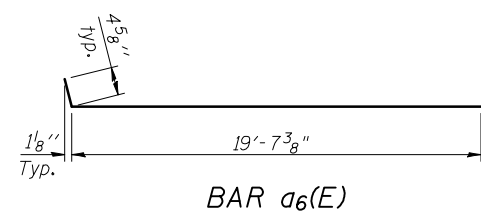
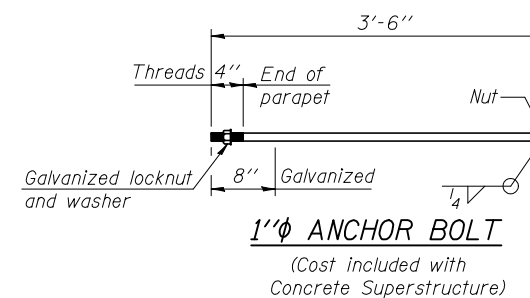
SECTION D-D

(Looking East)
 (See Plan for dimensions not shown)

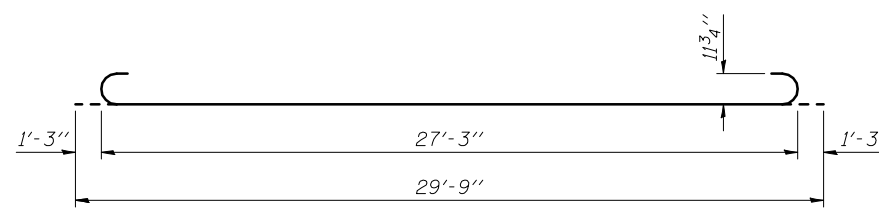
Elev. 543.12 W. Appr. WB
 Elev. 537.11 E. Appr. WB
 Elev. 543.12 W. Appr. EB
 Elev. 536.92 E. Appr. EB
 (Level out to out) AT APPROACH FOOTING



VIEW E-E



BAR a₆(E)



BAR b₅(E)

FOUR APPROACHES
 BILL OF MATERIAL

Bar	No.	Size	Length	Shape
a ₂ (E)	96	#6	6'-6"	—
a ₆ (E)	200	#4	20'-0"	—
a ₇ (E)	368	#5	20'-9"	—
b ₄ (E)	124	#4	29'-8"	—
b ₅ (E)	360	#9	29'-9"	—
b ₆ (E)	8	#4	14'-8"	—
b ₇ (E)	8	#4	14'-5"	—
d(E)	144	#5	5'-7"	—
d ₂ (E)	152	#5	7'-11"	—
e ₁₁ (E)	64	#4	15'-8"	—
e ₁₂ (E)	8	#8	15'-8"	—
t(E)	304	#4	9'-8"	—
w(E)	320	#5	20'-1"	—
Concrete Superstructure			Cu. Yd.	245.6
Concrete Structures			Cu. Yd.	46.7
Reinforcement Bars, Epoxy Coated			Pound	62370

See Note A

Note A: 53704 lbs (Superstructure)
 8666 lbs (Substructure)

BLANK, WESSELINK, COOK & ASSOCIATES DECATUR, ILLINOIS ENGINEERS - CONSULTANTS DESIGN FIRM NO. 184000894

FILE NAME =	USER NAME =	DESIGNED PBB	REVISD -
		CHECKED MCB	REVISD -
		DRAWN CGF	REVISD -
		CHECKED MCB	REVISD -

STATE OF ILLINOIS
 DEPARTMENT OF TRANSPORTATION

BRIDGE APPROACH SLAB DETAILS
 STRUCTURE NO. 018-0049(W.B.) & 0050(E.B.)

(Sheet 2 of 2)

SHEET NO. 16 OF 42 SHEETS

F.A.I. RTE.	SECTION	COUNTY	TOTAL SHEETS	SHEET NO.
70	(18-47-VBK (18-47B, 18-47H)/BR	CUMBERLAND	147	108
				CONTRACT NO. 74466
ILLINOIS FED. AID PROJECT				