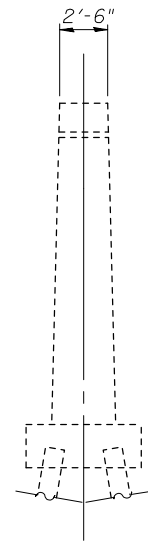
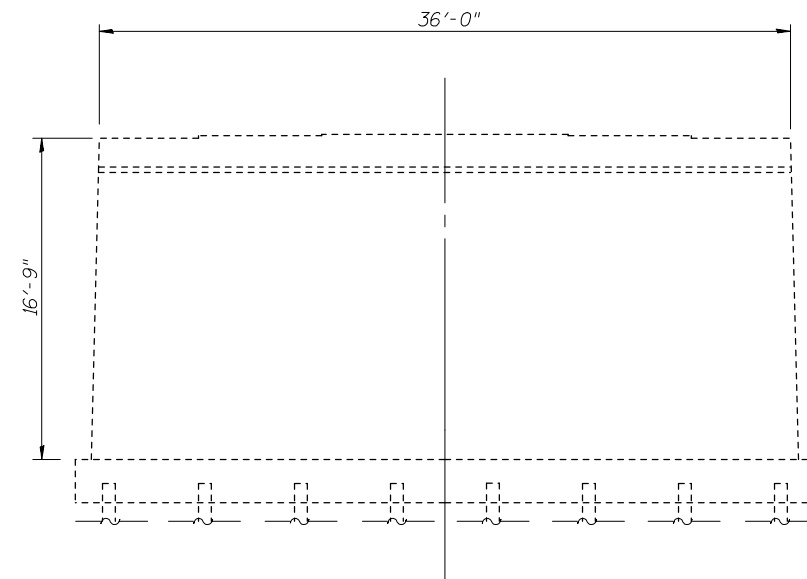


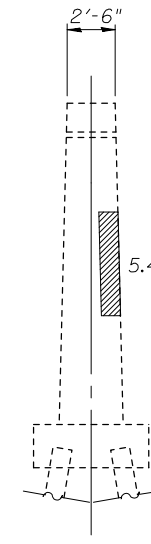
WEST FACE PIER 1



SOUTH FACE

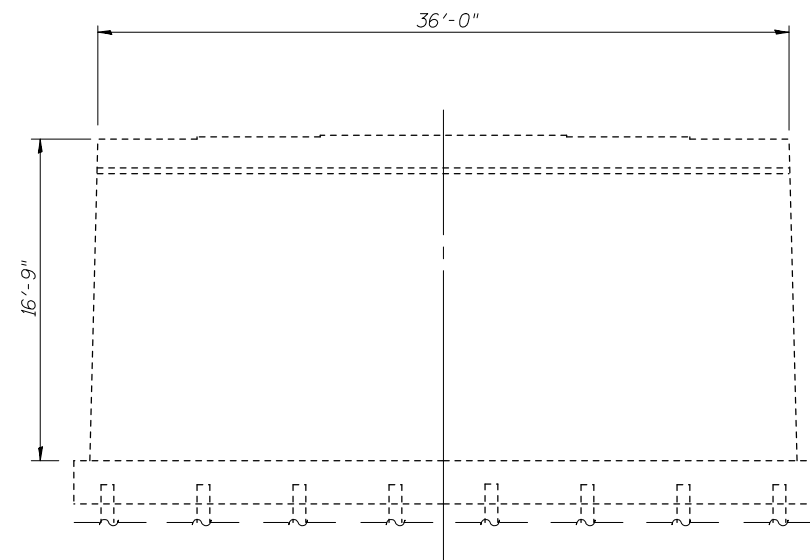


EAST FACE PIER 1

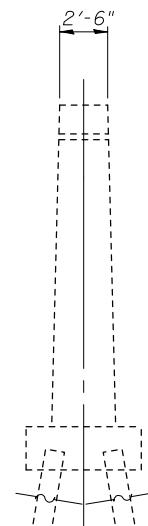


NORTH FACE

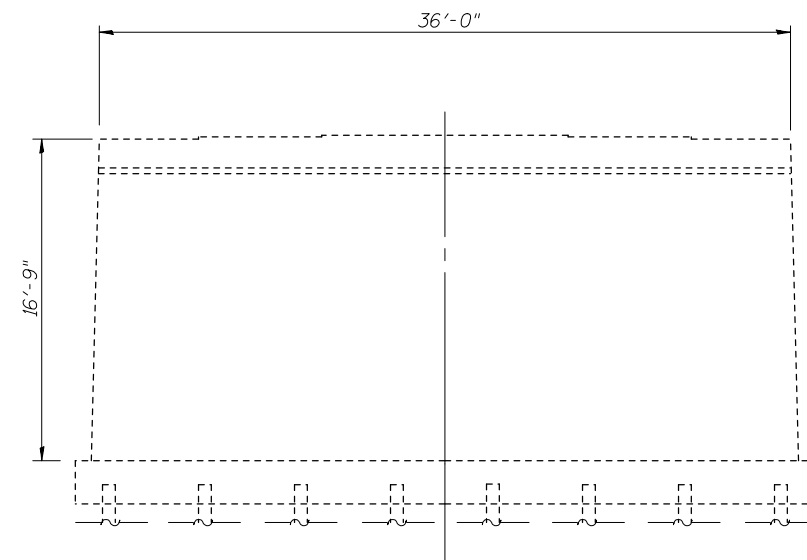
S.N. 018-0049



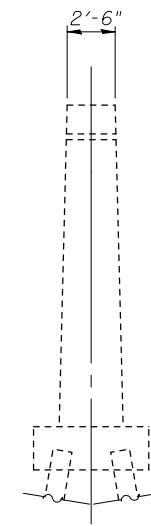
WEST FACE PIER 1



SOUTH FACE



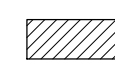
EAST FACE PIER 1



NORTH FACE

S.N. 018-0050

LEGEND

 Structural Repair of Concrete
(Depth Equal To or Less Than 5")

TWO PIERS
BILL OF MATERIAL

ITEM	UNIT	TOTAL
Structural Repair of Concrete (Depth Equal to or Less Than 5")	Sq. Ft.	19.4

BLANK, WESSELINK, COOK & ASSOCIATES DECATUR, ILLINOIS ENGINEERS - CONSULTANTS DESIGN FIRM NO. 184000894

FILE NAME =	USER NAME =	DESIGNED <i>PBB</i>	REVISED -
	CHECKED <i>MCB</i>	REVISIONS -	
	PLOT SCALE =	DRAWN <i>MLO</i>	REVISED -
	PLOT DATE =	CHECKED <i>MCB</i>	REVISED -

STATE OF ILLINOIS
DEPARTMENT OF TRANSPORTATION

CONCRETE REPAIR DETAILS (PIER 1)
STRUCTURE NO. 018-0049(W.B.) & 0050(E.B.)

SHEET NO27 OF 42 SHEETS

F.A.I. RTE.	SECTION	COUNTY	TOTAL SHEETS	SHEET NO.
70	118-47-VBK (18-47B, 18-47HB)BR	CUMBERLAND	147	119
			CONTRACT NO. 74466	
ILLINOIS FED. AID PROJECT				