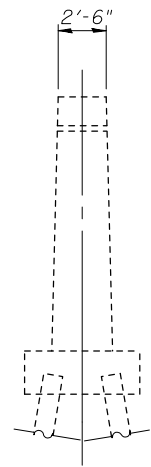
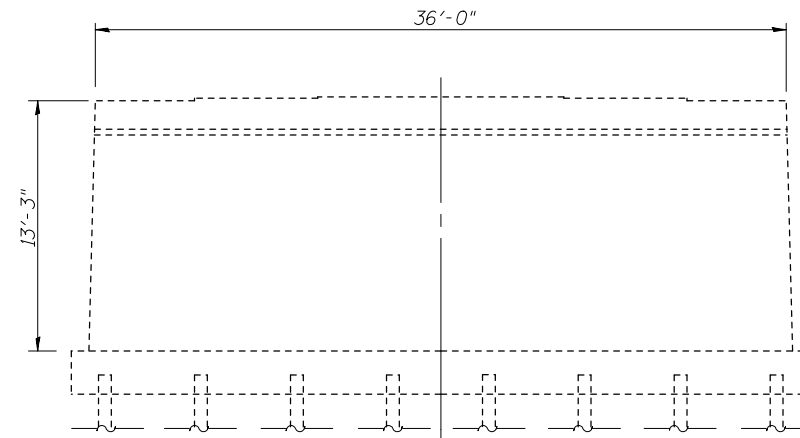


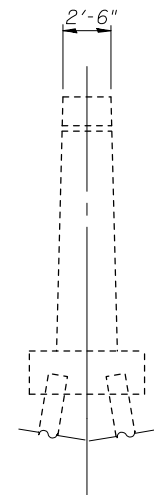
WEST FACE PIER 6



SOUTH FACE

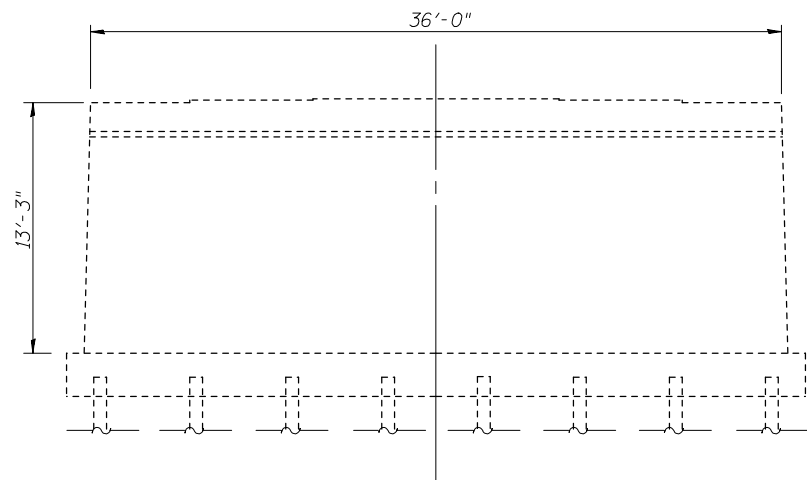


EAST FACE PIER 6

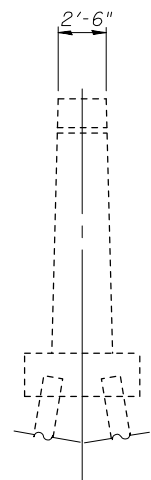


NORTH FACE

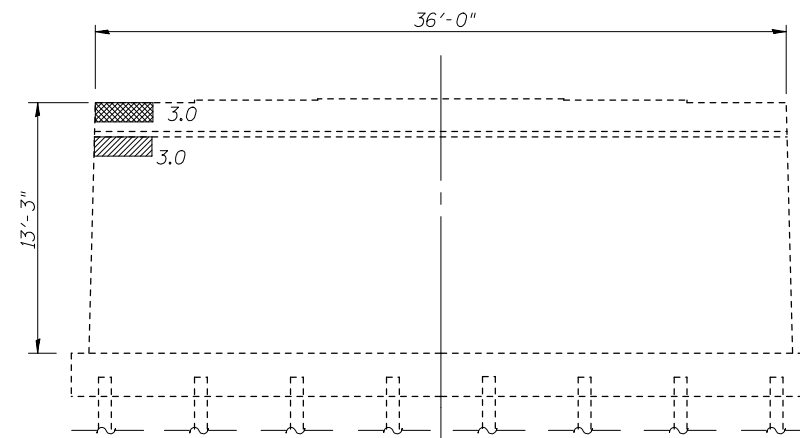
S.N. 018-0049



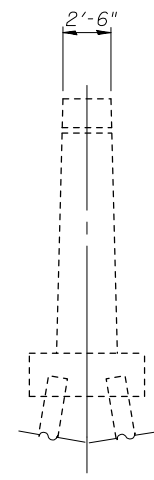
WEST FACE PIER 6



SOUTH FACE





EAST FACE PIER 6



NORTH FACE

S.N. 018-0050

LEGEND

-  Structural Repair of Concrete (Depth Equal To or Less Than 5")
-  Structural Repair of Concrete (Depth Greater Than 5")

**TWO PIERS
BILL OF MATERIAL**

ITEM	UNIT	TOTAL
Structural Repair of Concrete (Depth Equal to or Less Than 5")	Sq. Ft.	3.0
Structural Repair of Concrete (Depth Greater Than 5")	Sq. Ft.	3.0

BLANK, WESSELINK, COOK & ASSOCIATES DECATUR, ILLINOIS ENGINEERS - CONSULTANTS DESIGN FIRM NO. 184000894

FILE NAME =	USER NAME =	DESIGNED <i>PBB</i>	REVISED -
	CHECKED <i>MCB</i>		REVISED -
	PLOT SCALE =	DRAWN <i>MLO</i>	REVISED -
	PLOT DATE =	CHECKED <i>MCB</i>	REVISED -

**STATE OF ILLINOIS
DEPARTMENT OF TRANSPORTATION**

**CONCRETE REPAIR DETAILS (PIER 6)
STRUCTURE NO. 018-0049(W.B.) & 0050(E.B.)**

SHEET NO.32 OF 42 SHEETS

F.A.I. RTE.	SECTION	COUNTY	TOTAL SHEETS	SHEET NO.
70	(18-47-VBK (18-47B, 18-47HB)/BR	CUMBERLAND	147	124
			CONTRACT NO. 74466	

ILLINOIS FED. AID PROJECT