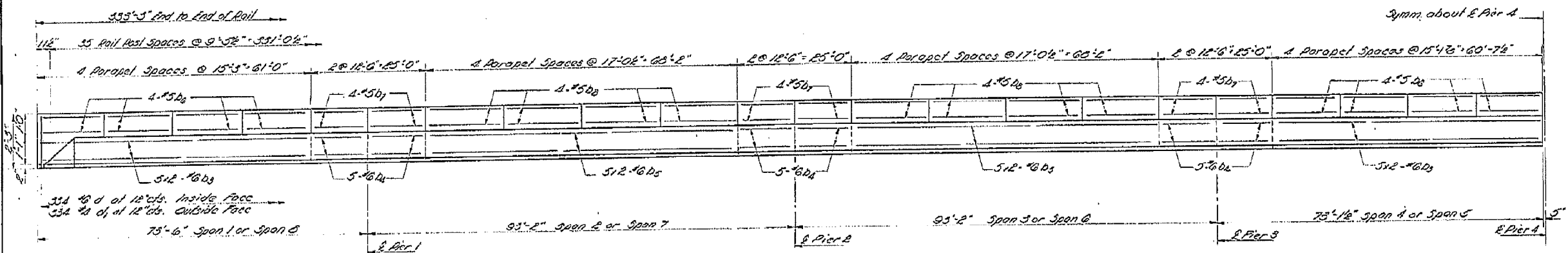
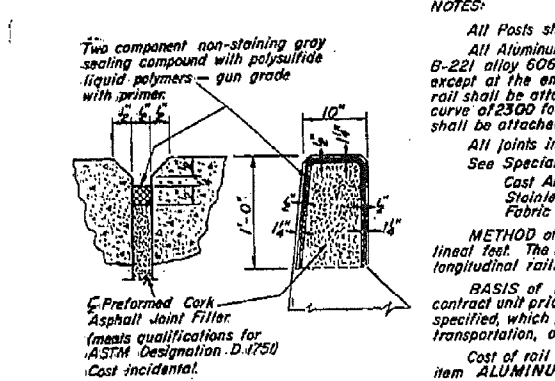
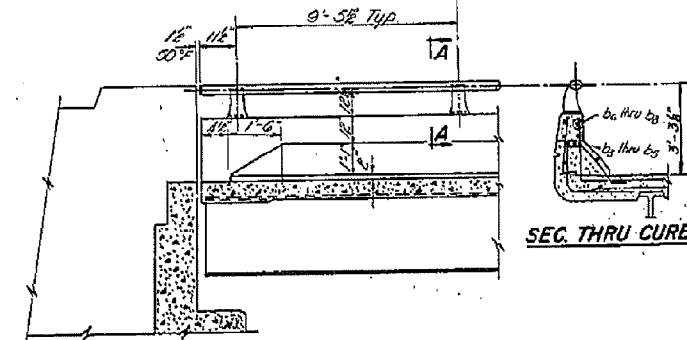
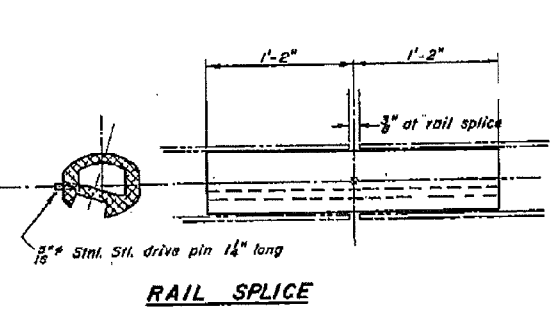
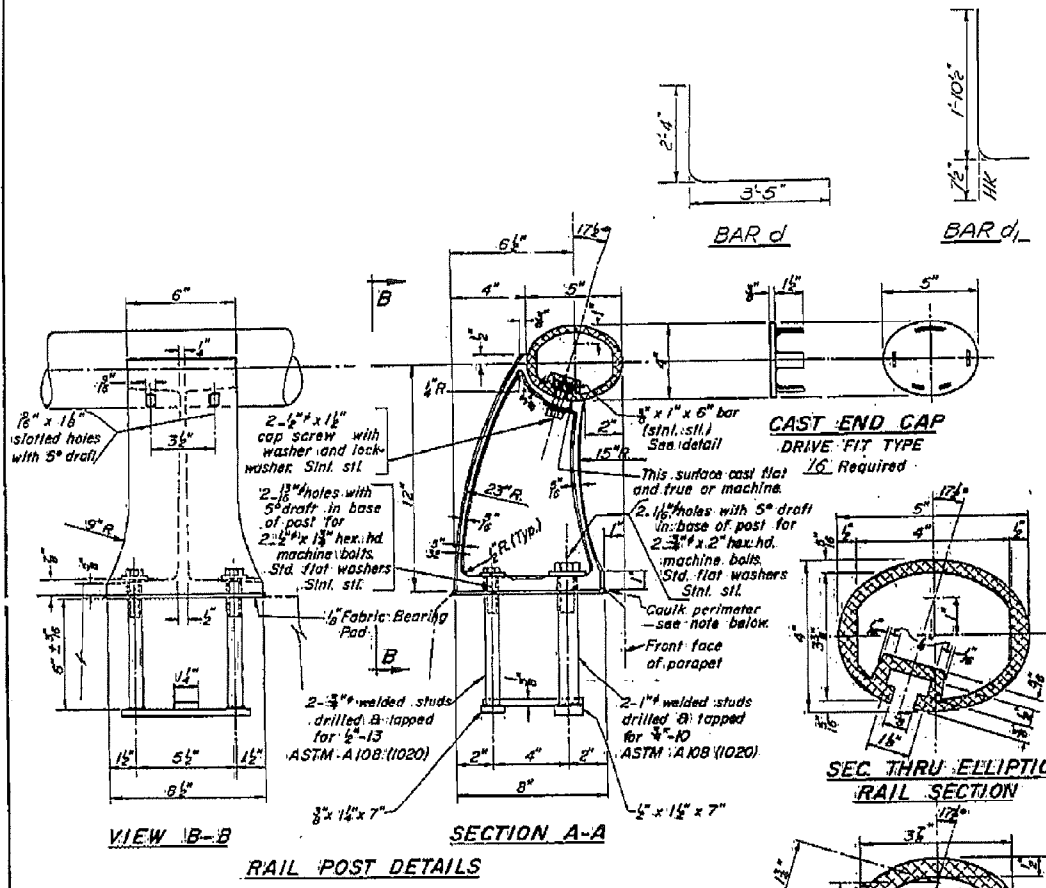


STATE OF ILLINOIS
DEPARTMENT OF PUBLIC WORKS & BUILDINGS
DIVISION OF HIGHWAYS

DATE	BY	CHKD	APP'D	SHEET NO.
10-27-67	AJW	WMB	29	13
PROJECT: CUMBERLAND COUNTY BRIDGE				19 SHEETS



HALF INSIDE ELEVATION
(North Parapet Shown, South Parapet Similar)



NOTES:
All Posts shall be normal to parapet.
All Aluminum Alloy Extruded Rail shall conform to ASTM specification B-221 alloy 6061-T6 and shall be supplied in modular lengths of 30 feet, except at the end of bridge or over open joints in bridge deck where the rail shall be attached to a minimum of 2 posts. If the rail is on a horizontal curve of 2300 foot radius or less, the modular lengths may be reduced but shall be attached to a minimum of 2 posts.
All joints in rail shall be spliced per detail.
See Special Provisions for following Material Specifications:
Cast Aluminum Alloy Bridge Post—Alloy A344-T4.
Stainless Steel Bars, Cap Screws, Washers and Lockwashers.
Fabric Bearing Pad.
METHOD OF MEASUREMENT: Aluminum handrail shall be measured in lineal feet. The length paid for shall be the over all length along the top longitudinal railing member thru all posts and gaps.
BASIS OF PAYMENT: Aluminum handrail shall be paid for at the contract unit price per lineal foot for ALUMINUM HANDRAIL, measured as specified, which price shall be payment in full for all materials, fabrication, transportation, and erection.
Cost of rail splice, end caps, and hardware to be incidental to item ALUMINUM HANDRAIL.
Provide 1-1/8" and 2-1/8" Aluminum Shims for 25% of the Posts.
Rail element shall be parallel to Grade—high spots shall be ground, and low spots shimmed.

**PARAPETS & RAILS
BILL OF MATERIAL**

Bar	No.	Size	Length	Shape
D ₁	180	#5	37'-0"	—
D ₂	240	#5	12'-3"	—
D ₃	160	#6	34'-9"	—
D ₄	250	#5	14'-7"	—
D ₅	192	#5	12'-5"	—
D ₆	236	#5	10'-9"	—
C	2672	#6	5'-9"	L
G	2672	#4	2'-6"	L
Class X Concrete		Cu. Yds.	243.0	
Reinforcement Bars		LBS	28660	
Aluminum Handrail		Lin. Ft.	2666	

**ALUMINUM HANDRAIL
NORTH & SOUTH BRIDGES
RAIL PT. TO SEC. 18-47B
CUMBERLAND COUNTY
STATION 158+31**

DESIGNED	W. C. Clark	19
CHECKED	A. J. Williams Sr.	PASSED
DRAWN	W. M. Best	APPROVED
CHECKED	A. J. Williams Sr.	

Note:
Seal perimeter of base of post to parapet with two component non-staining gray sealing compound with polysulfide liquid polymers—gun grade with primer.

R-17 11-18-66
Rev. 9-5-67 J.W.C. This sheet replaces original sheet 9. Class X Concrete changed from 135.6 cu yds. to 243.0 cu yds. Reinforcement Bars changed from 29030 lbs. to 28660 lbs.

BLANK, WESSELINK, COOK & ASSOCIATES DECATUR, ILLINOIS ENGINEERS - CONSULTANTS DESIGN FIRM NO. 184000894

FILE NAME =	USER NAME =	DESIGNED PBB	REVISED -
		CHECKED MCB	REVISED -
		DRAWN MLO	REVISED -
		CHECKED MCB	REVISED -

STATE OF ILLINOIS
DEPARTMENT OF TRANSPORTATION

EXISTING BRIDGE PLANS
STRUCTURE NO. 018-0049(W.B.) & 0050(E.B.)

SHEET NO. 40 OF 42 SHEETS

F.A.I. RTE.	SECTION	COUNTY	TOTAL SHEETS	SHEET NO.
70	(18-47-VBK (18-47B, 18-47HB)BR	CUMBERLAND	147	132
			CONTRACT NO. 74466	

ILLINOIS FED. AID PROJECT