

STATE OF ILLINOIS  
DEPARTMENT OF TRANSPORTATION  
DIVISION OF HIGHWAYS

**PROPOSED  
HIGHWAY PLANS**

FAP ROUTE 331 (IL 13)  
SECTION (1X-1)R-5,RS-3,N-5,TS-4  
PROJECT NHF-HPP-0331(061)  
INTERSECTION IMPROVEMENTS  
WILLIAMSON COUNTY  
C-99-061-10

F.A.P. RTE.	SECTION	COUNTY	TOTAL SHEETS	SHEET NO.
331	(1X-1)R-5,RS-3,N-5,TS-4	WILLIAMSON	288	1
ILLINOIS			CONTRACT NO. 78203	

\* 288 + 3 = 291

D-99-059-10

FOR INDEX OF SHEETS, SEE SHEET NO. 2  
FOR SUMMARY OF QUANTITIES, SEE SHEET NO. 5-16

**TRAFFIC DATA**

IL 13 TRAFFIC DATA  
2009 ADT = 24,800 WITH 4.5% TRUCKS

NORTH RUSSELL ST TRAFFIC DATA  
2006 ADT = 7,200 WITH 4.1% TRUCKS

SOUTH RUSSELL ST. TRAFFIC DATA  
2006 ADT = 9,700 WITH 4.2% TRUCKS

**TOWNSHIPS**

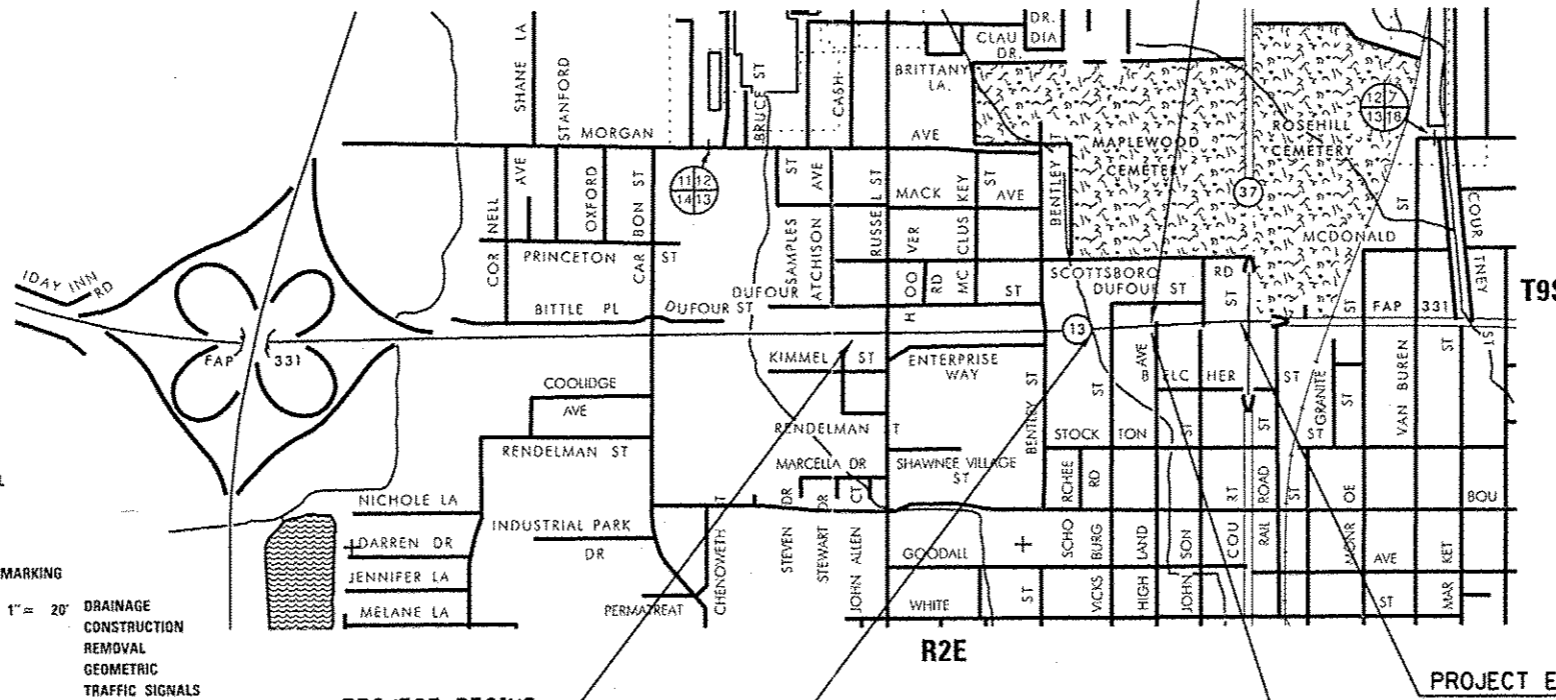
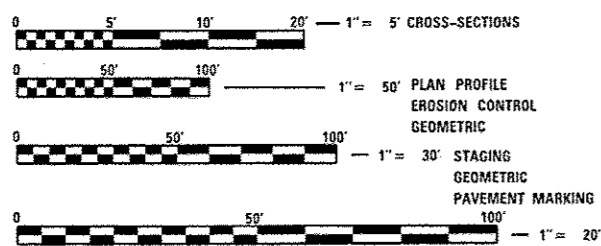
WEST MARION



LOCATION OF SECTION INDICATED THUS: - [shaded box] -



MAP NOT TO SCALE



PROJECT BEGINS  
EB STA. 858+15  
WB STA. 858+72.7

S.N. 100-7013  
STA. 875+24.3 EB

STA. EQUATION  
WB STA. 880+15.53 BK =  
WB STA. 880+15.69 AH

PROJECT ENDS  
EB STA. 883+90.6  
WB STA. 886+77

STA. EQUATION  
EB STA. 880+16.17 BK =  
EB STA. 880+15.69 AH

FULL SIZE PLANS HAVE BEEN PREPARED USING STANDARD ENGINEERING SCALES. REDUCED SIZED PLANS WILL NOT CONFORM TO STANDARD SCALES. IN MAKING MEASUREMENTS ON REDUCED PLANS, THE ABOVE SCALES MAY BE USED.

J.U.L.I.E.  
JOINT UTILITY LOCATION INFORMATION FOR EXCAVATION  
1-800-892-0123  
OR 811

PROJECT ENGINEER: SUSAN POE  
DESIGNER: JAY KRANZ

CONTRACT NO. 78203

GROSS LENGTH = 2,861.84 FT. = 0.542 MILE  
NET LENGTH = 2,861.84 FT. = 0.542 MILE

STATE OF ILLINOIS  
DEPARTMENT OF TRANSPORTATION  
DIVISION OF HIGHWAYS

SUBMITTED May 9th 2012  
*[Signature]*  
DEPUTY DIRECTOR OF HIGHWAYS, REGION ENGINEER

June 29 2012  
*John D. Barancelli, PE, IA*  
ENGINEER OF DESIGN AND ENVIRONMENT

June 29 2012  
*William R. Freyer, IA*  
DIRECTOR OF HIGHWAYS, CHIEF ENGINEER

PRINTED BY THE AUTHORITY  
OF THE STATE OF ILLINOIS